

Chief Signal Officer, U. S. Army,
Washington,

This envelope will only be used by Postmasters for
the transmission of Fortnightly Reports on Form 20.



Chief Signal Officer, U. S. Army,

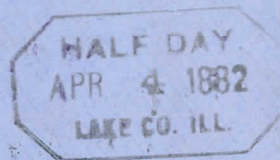
Washington,

D. C.



Chief Signal Officer, U. S. Army,

This envelope will only be used by Postmasters for
the transmission of Fortnightly Reports on Form 20.



Chief Signal Officer, U. S. Army,

Washington,

D. C.

This envelope will only be used by Postmasters for }
the transmission of Fortnightly Reports on Form 20. }

FOR A-142...
SHEET PROTECTOR A-142...
SHEET



Chief Signal Officer, U. S. Army,
Washington,

D. C.

This envelope will only be used by Postmasters for }
the transmission of Monthly Reports on Form 125 A. }



Chief Signal Officer, U. S. Army,
Washington,

D. C.

This envelope will only be used by Postmasters for }
the transmission of Fortnightly Reports on Form 29. }



Chief Signal Officer, U. S. Army,
Washington,

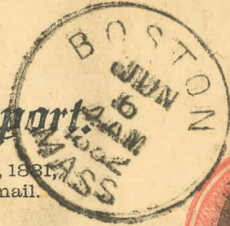
D. C.

This envelope will only be used by Postmasters for }
the transmission of Fortnightly Reports on Form 29. }

IMMEDIATE.

Signal Service Weather Report

By authority of the Post Office Department, June 18, 1881,
this Report will be treated in all respects like letter mail.



ETempleton, mas

POSTMASTER.



Chief Signal Officer, U. S. Army,

Washington,

This envelope will only be used by Postmasters for }
the transmission of Fortnightly Reports on Form 29. }

D. C.



Chief Signal Officer, U. S. Army,

WASHINGTON,

D. C.

This envelope will only be used by Postmasters for the transmission of Weekly Reports on Form 29.



Chief Signal Officer, U. S. Army,

WASHINGTON,

D. C.

This envelope will only be used by Postmasters for the transmission of Weekly Reports on Form 29.

WAR DEPARTMENT,
SIGNAL SERVICE, U. S. A.,
RAILWAY BULLETINS.



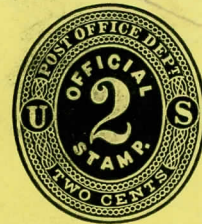
Chief Signal Officer, U. S. Army,

Washington,

D. C.

This envelope will be used for the transmission of Monthly Reports, Form 125 B. }

Registered Business.



Postmaster

New York

OFFICIAL.

This Envelope is to be used only for
Post-Office Business.

401



Handwritten initials



Handwritten signature
Postmaster, *Lockport* County,

OFFICIAL

This Envelope is to be used only for
Post-Office Business.

Handwritten signature

CONTENTS, 402



MONEY ORDER OFFICE,

Post-Office Department,

OFFICIAL.
This Envelope is to be used only for
Post-Office Business.

WASHINGTON, D. C.

MOB

Lebanon



*Postmaster
New York
N.Y.*

OFFICIAL.

This Envelope is to be used only for
Post-Office Business.

MONEY ORDER BUSINESS.

402

POSTMASTER,

COUNTY,

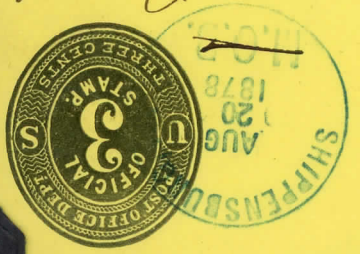
OFFICIAL.
This Envelope is to be used only for
Post-Office Business.

Registered Business.

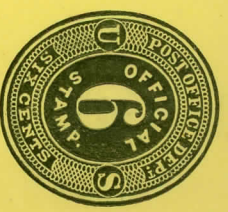
OFFICIAL.

This Envelope is to be used only for
Post-Office Business.

Levy & Randa
County, *Pa*



102



Third Assistant Postmaster General,

Post-Office Department,

WASHINGTON, D. C.

OFFICIAL

This Envelope is to be used only for
Post-Office Business.

MONEY ORDER BUSINESS.

Boyd

POSTMASTER,

Mr Clark



COUNTY,

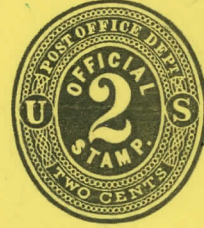
Wash

OFFICIAL

This Envelope is to be used only for
Post-Office Business.

Registered Business.

HAVE EXAMINED ON DELIVERY, OBTAIN
ENVELOPE IF INCORRECT. C. F. Jr. Gen'l Supt.



Herald

OFFICIAL.

This Envelope is to be used only for
Post-Office Business.

38852

City

Money Order Business.



Postmaster, *New York*

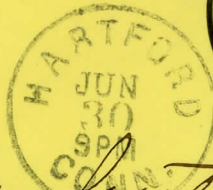
County,

OFFICIAL.

This Envelope is to be used only for
Post-Office Business.

NY

Registered Business.



Postmaster, *Winchester*

County,

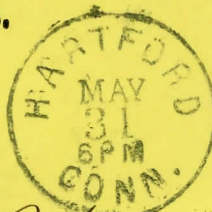
W.H.

OFFICIAL.

This Envelope is to be used only for Post-Office Business.

Printed in U. S. A.

Money Order Business.



Postmaster, *Winchester*

Cheshire County,

W.H.

OFFICIAL.

This Envelope is to be used only for Post-Office Business.

No. 1412-0

ELBE

Registered Business.



Postmaster, *Carl Prindler*

County,

OFFICIAL.

This Envelope is to be used only for
Post-Office Business.

Mass.

HC

Post Office Department.

POST OFFICE AT _____

OFFICIAL BUSINESS.

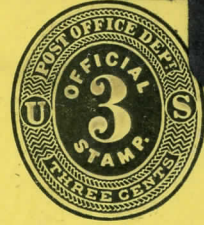
A penalty of \$300 is fixed by law, for using this
Envelope for other than Official Business.

WTM. U.S.P.O. DEPT

15567

Notice to Publisher.

Spencer Hill, April 8/76



Postmaster,

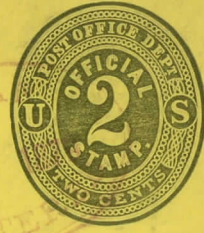
New York

County,

OFFICIAL.

This Envelope is to be used only for Post-Office Business.

N.Y.

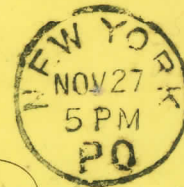


O Tracy
Maplewood
City

OFFICIAL.

This Envelope is to be used only for Post-Office Business.

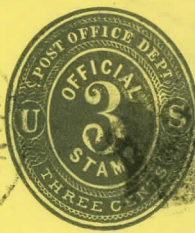
Registered Business.



V. D. Sebeck
Box 4926
City

OFFICIAL.

This Envelope is to be used only for Post-Office Business.



Postmaster, *My*

County,

OFFICIAL.

This Envelope is to be used only for
Post-Office Business.

Registered Business.



Postmaster, *Oakland*

County,

OFFICIAL.

This Envelope is to be used only for
Post-Office Business.

Cal