



1851 025-5000



1851 125-4250





1857

275-1820

den col



1857

275-1820



1863

33-995

used





1869

9-705



159 NG



105-250

1881



1870 160-3000

1850



~~1873~~ 2-350



2001
1000



~~9870~~ ~~1250-9000~~

~~0344~~



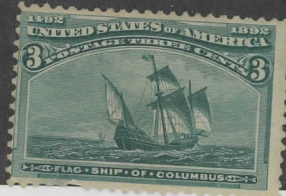
1890 25 - 5300



1894 10-290



1893 1-1500



1893 15-4500





PLEASE TURN PAGES CAREFULLY



1893

10-155



1893

06

5-625

06



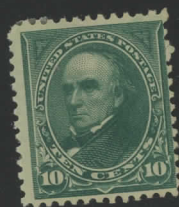
ATG



1893

135-1470

NG



1890

5-600



1890

19-600



1894 20-225



1898 - 4-295



1901 5-2800



1901 3-75 06



1901 2-753



NG



1901 16-2800



1010



1903

2-225



1904

25-7300





1907
4-607



1907
3-650

PLEASE TURN PAGES CAREFULLY

328-30 (2 x 212⁵⁰ / 425-) (All NG)





PLEASE TURN PAGES CAREFULLY



70-1460





~~1909~~ 1909 50-3000

370

3 x 6.75 (20²⁵)



06

1909 2-300



1909 4-1758



06

372 3x10-30-534-88 1909 06



Bureau, Engraving



1909

33-495



1913
2-375



14

06



1913 2-355

1913
1-500







413 *mt



099 / 10

06

