

UNITED STATES

1847

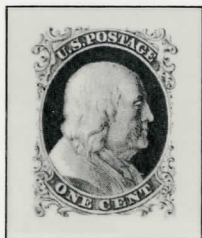
Imperforated #1



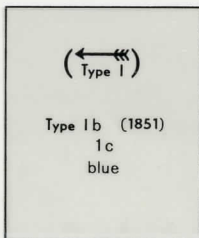
Geschnitten #2



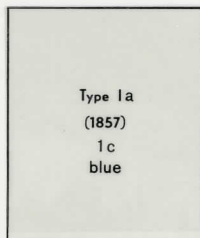
Imperforated



1851/57



Geschnitten



Type II

1c
blue

Type III

1c
blue

Type III a

1c
blue

Type IV
(1852)

1c
blue

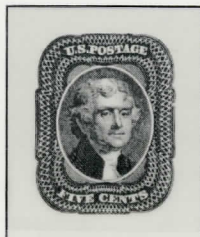
#10 Post Piece



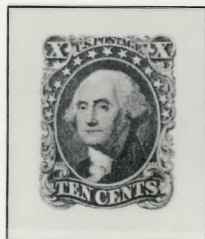
#10-A



#11



#14 Type II

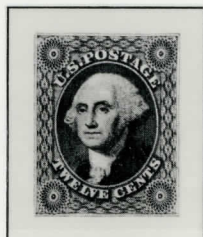


Type III

10c
green

Type IV

10c
green

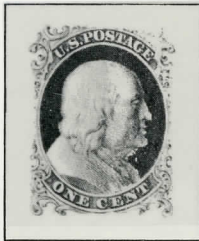


UNITED STATES

1857/61

Perforated 15

Gezähnt 15



(← Type I)
Type Ia
1c
blue

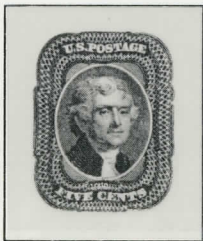
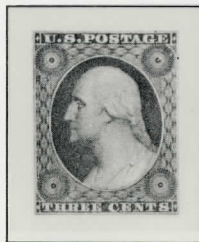
Type II
1c
blue

Type III
1c
blue

Type III a
1c
blue

Type IV
1c
blue

Type V
1c
blue



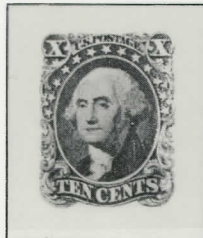
(Type I brick red ←)
Type I
5c
red brown

Type I
5c
Indian red

Type I
5c
brown

Type II
5c
orange brown

Type II
5c
brown



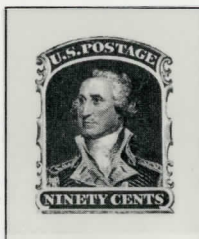
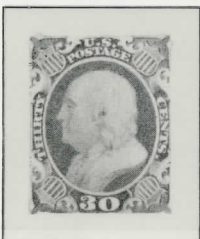
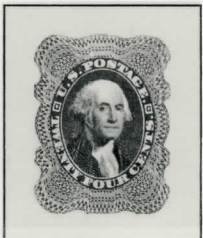
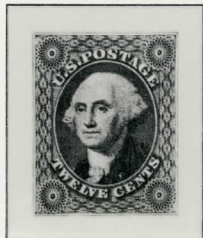
(← Type I)
Type II
10c
green

Type III
10c
green

Type IV
10c
green

Type V
10c
green

#36 Plate I



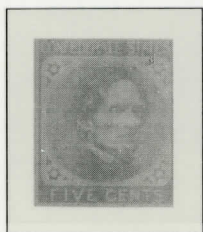
UNITED STATES

Confederate States — Konföderierte Staaten

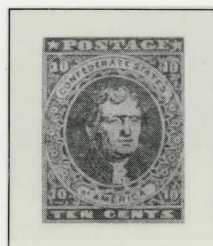
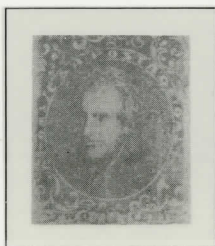
General Issues 1861 Allgemeine Ausgaben



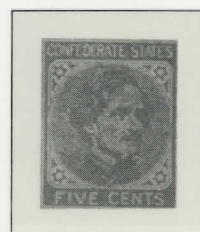
London Print
Londoner Druck



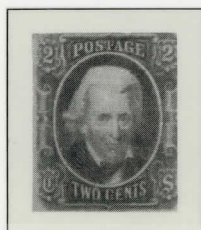
#4 1862



Local Print
Lokaldruck



1863



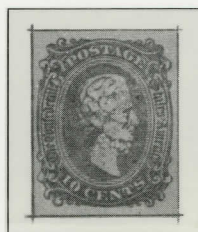
Never put in use
Nicht verausgabt



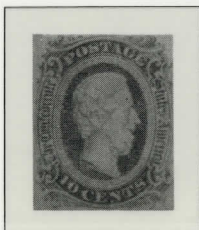
1863 #13



#12 1863



Die A-Type I Die B-Type II
Open Corners — Offene Ecken Filled Corners — Gefüllte Ecken

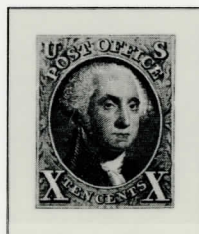
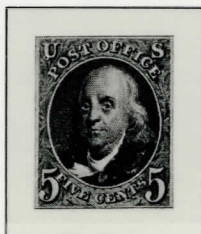


UNITED STATES

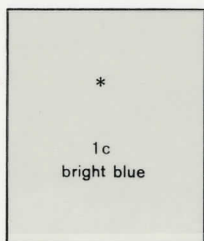
1875

Reproductions without gum

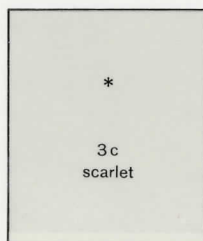
Nachdrucke ohne Gummi



Reprints of 1857/61 Issue
White paper, without gum

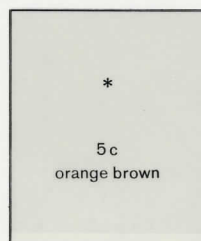


Perforated 12

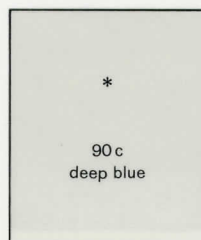
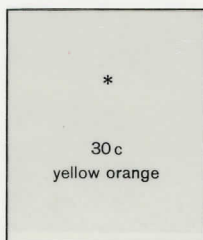
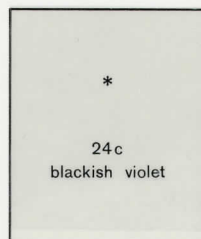
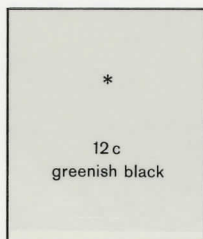
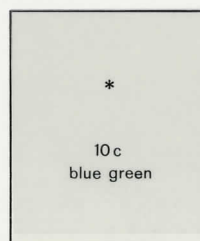


1875

Gezähnt 12

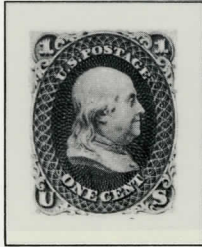


Neudrucke der 1857/61 Ausgabe
Weißes Papier, ohne Gummi



UNITED STATES

Without Grill



Perforated 12

(←)
blue

1c
ultramarine

1861/66



Gezähnt 12

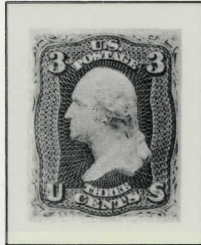
1c
indigo

Ohne Waffel-Einpressung



Sc 56 / SG 53
Thin paper

3c
brown rose



(←)
pink

3c
rose pink

Sc 65 / SG 62

3c
rose



Sc 74 / SG 70

3c
scarlet



(←)
buff

5c
brown yellow

Sc 75 / SG 71

5c
red brown

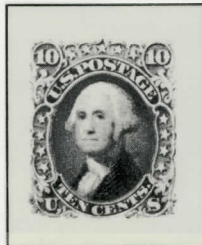
Sc 76 / SG 72

5c
brown

5c
dark brown

Sc 62 B (=58)
SG 55, Type I
Thin paper

10c
dark green



Sc 70c / SG 57
Thin paper

24c
violet



(red lilac)
←

24c
steel blue

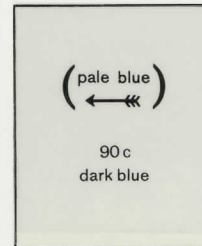
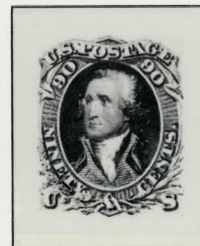


24c
blackish violet

Sc 90c / SG 60
Thin paper

(pale blue)
←

90c
dark blue





The Philatelic Foundation

70 West 40th Street • 15th Floor
New York, NY 10018
EXPERT COMMITTEE

No. 485942

04/20/2010

We have examined the enclosed item, of which a photograph is attached, and *described by the applicant* as follows:

Country: UNITED STATES OF AMERICA

<u>Cat. No.</u>	<u>Issue</u>	<u>Denom.</u>	<u>Color</u>
78a	1862	24¢	grayish lilac

Scott's unless otherwise specified.

USED, SEGMENTED CORK CANCEL.

AND WE ARE OF THE OPINION THAT:

IT IS A GENUINE SCOTT 78b, GRAY SHADE. *****



485942

F 214572

For The Expert Committee
[Signature]
Chairman

Photocopies of this Certificate are not valid.

Submitted by

UNITED STATES

1867

Embossed with grills
of various sizes

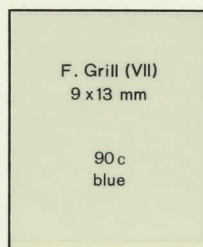
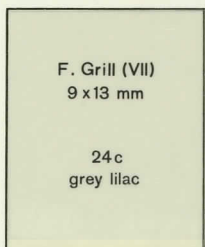
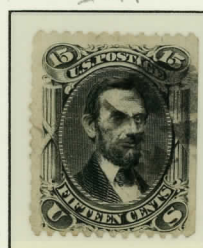
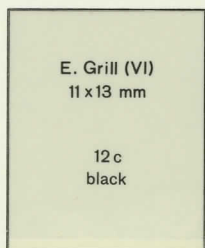
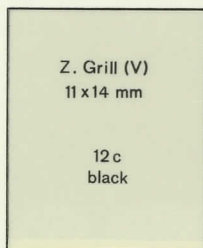
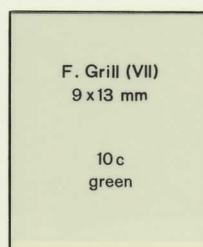
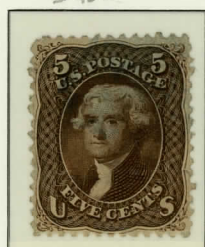
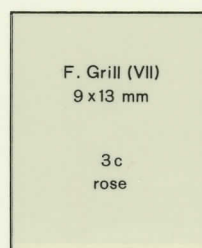
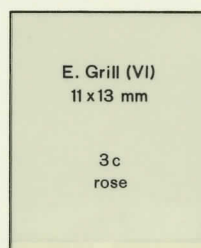
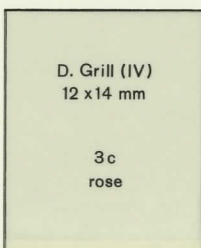
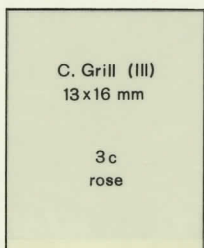
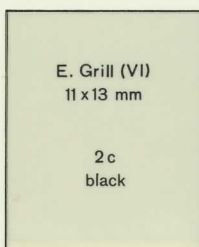
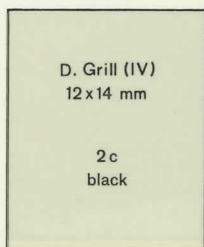
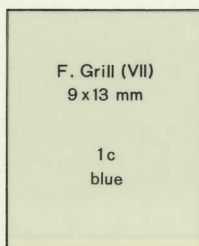
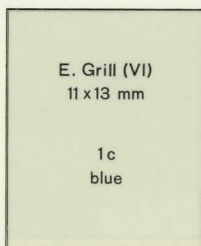
Same Designs
as 1861/66 Issues

Perforated 12

Mit Waffeleinpressung
in verschiedenen Größen

Gleiche Zeichnung
wie 1861/66 Ausgaben

Gezähnt 12

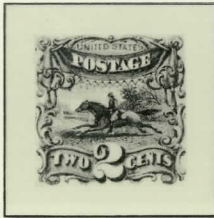


UNITED STATES

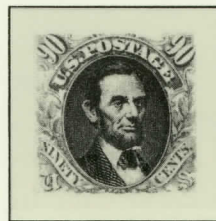
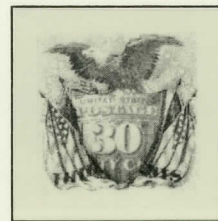
1869

Embossed with G. Grill
9 1/2 x 9 1/2 mm
Perforated 12

Mit Waffeleinpressung
9 1/2 x 9 1/2 mm
Gezähnt 12



(Type I)
←
Type II
15 c
brown / blue

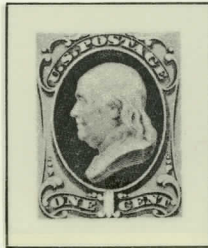


UNITED STATES

1870/71

Without Grill – Ohne Waffeleinpressung

#145



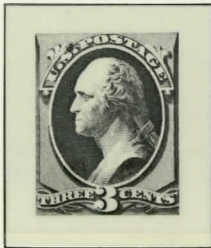
#146



Printed by the

National Bank Note Co.

#148



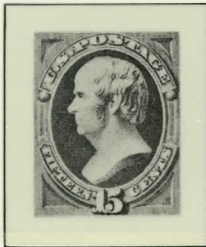
#149



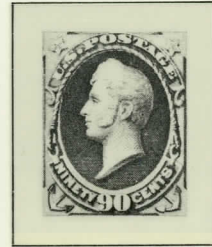
#151



#153



#154



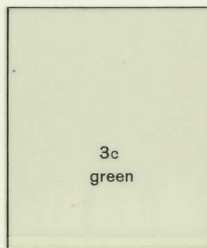
1873

Printed by the Continental Bank Note Co.

#156



#157



#159



#160



#161



#162



#163



#165



#166





The Philatelic Foundation

70 West 40th Street • 15th Floor
New York, NY 10018
EXPERT COMMITTEE

No. 504005
04/19/2012

We have examined the enclosed item, of which a photograph is attached, and *described by the applicant* as follows:

Country: UNITED STATES OF AMERICA

<u>Cat. No.</u>	<u>Issue</u>	<u>Denom.</u>	<u>Color</u>
165	1873	30¢	gray black

Scott's unless otherwise specified.

USED, BLUE NUMERAL "2" IN GRID CANCEL.

AND WE ARE OF THE OPINION THAT:

IT IS GENUINE*****



504005

F 236798

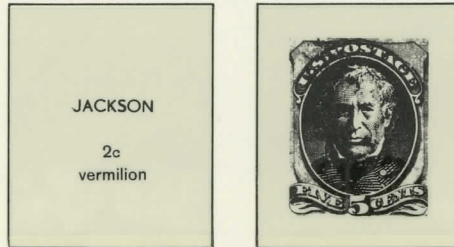
For The Expert Committee
Chairman

Photocopies of this Certificate are not valid.

Submitted by

UNITED STATES

1875

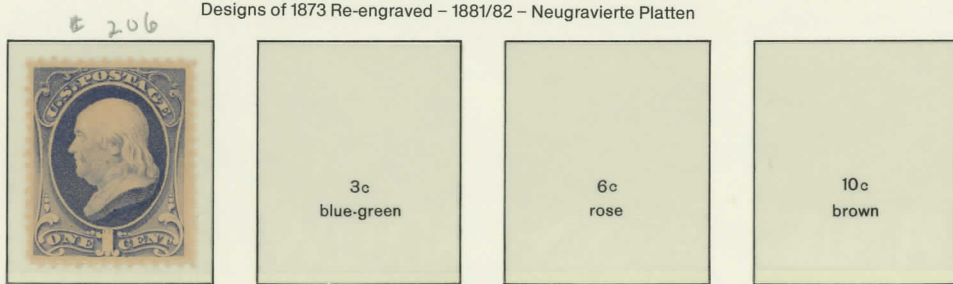


1879

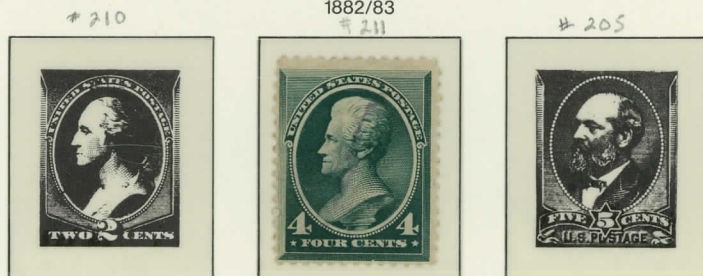
Printed by the American Bank Note Co.



Designs of 1873 Re-engraved - 1881/82 - Neugravierte Platten

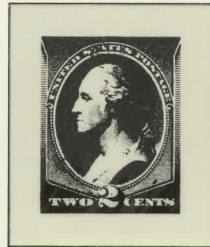
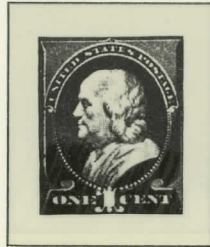


1882/83



UNITED STATES

1887



1888

JACKSON
Type of 1883

4 c
carmine

GARFIELD
Type of 1882

5 c
indigo

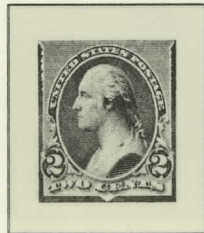
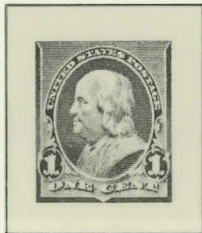
HAMILTON
Type of 1870-71

30 c
orange brown

PERRY
Type of 1870-71

90 c
purple

1890/93



(lake)
← →

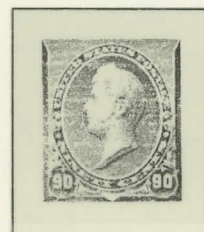
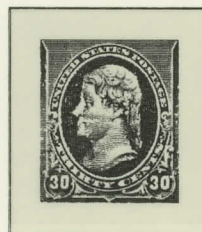
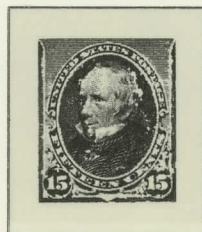
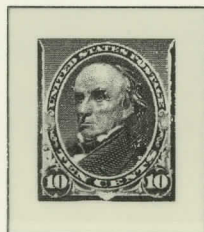
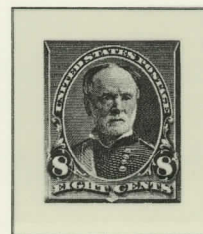
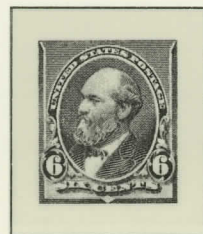
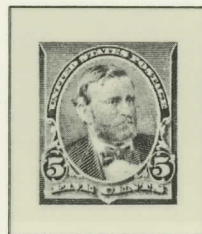
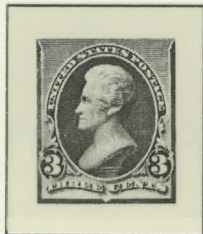
2 c
carmine

Cap on left „2“
Mützen auf linker Wertziffer

2 c
carmine

Cap on both „2“s
Mützen auf beiden Ziffern

2 c
carmine



UNITED STATES

Columbian Exposition

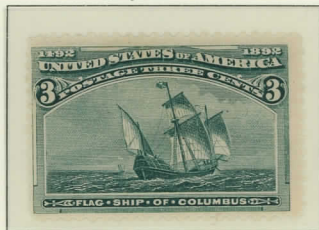
1893 # 230



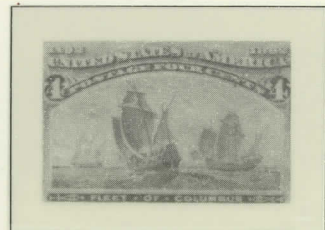
231



237



233



234



235



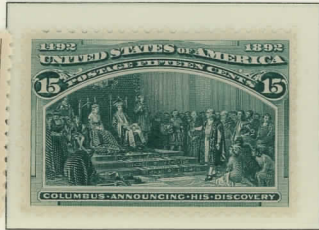
236



237



238



239



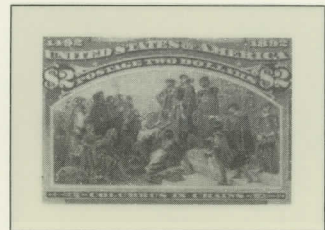
240



241



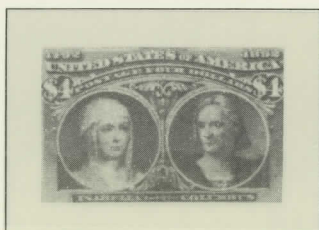
242



243



244



245



UNITED STATES

Trans-Mississippi Exposition

#285



1898
#286



#287



#288



#289



#290



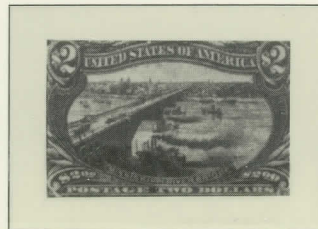
#291



#292



#293



Pan-American Exposition

#294



1901
#295



#296



#297



#298



#299

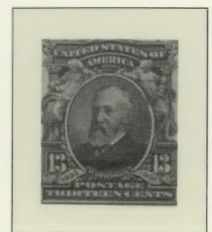
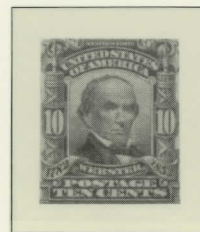
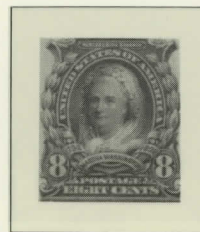
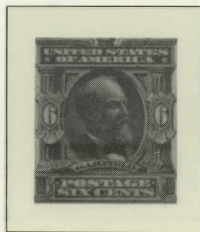
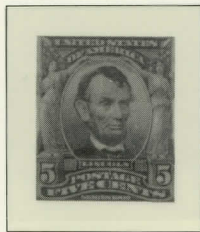
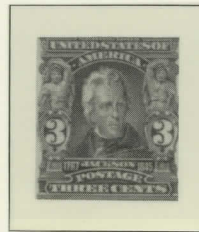
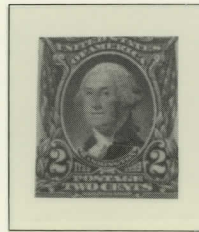
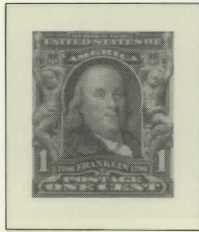


UNITED STATES

1902/03

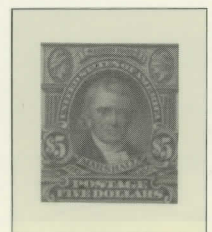
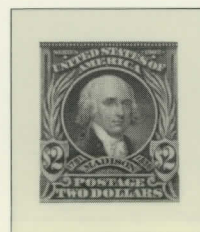
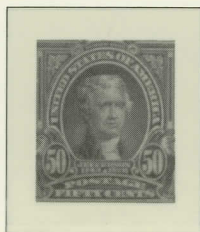
Wmkd. USPS - Perf. 12

#303



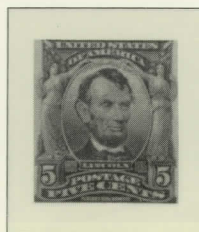
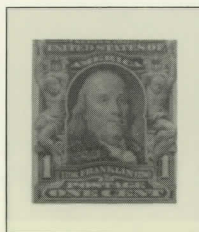
#304

#311



1906/08

Imperforated

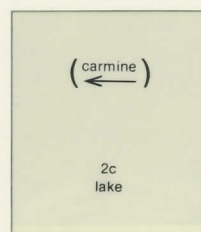
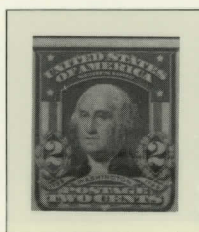
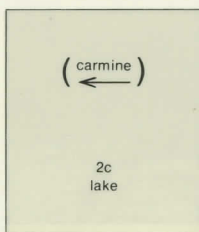
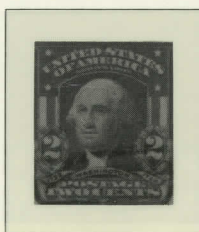


1903

1906

Perf. 12

Imperf.



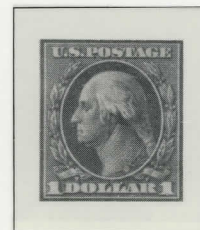
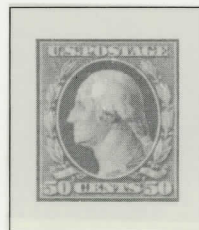
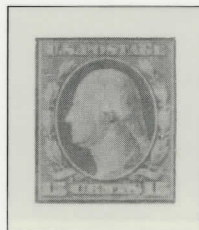
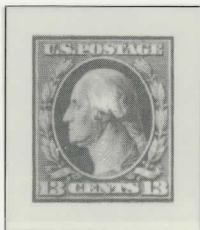
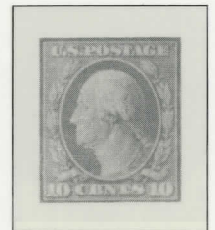
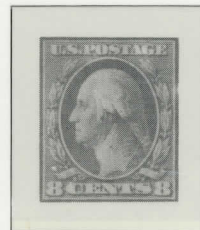
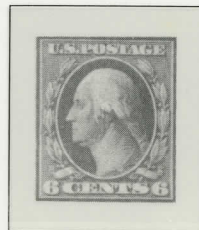
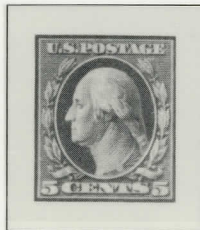
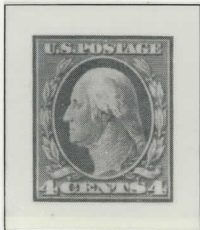
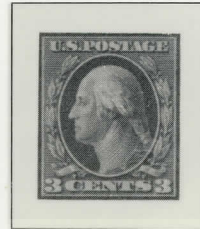
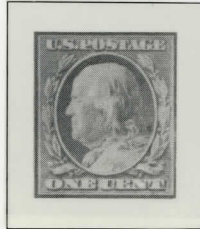
UNITED STATES

1908/09

Double Line Wmk.

USPS

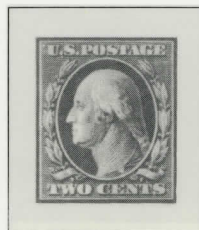
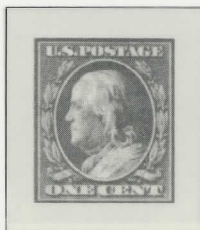
Perf. 12



Double Line Wmk.

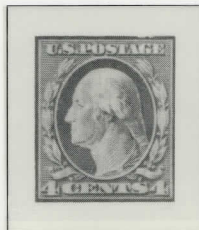
1908/09

Imperforated



#345

#347



Type 3 PA
#368 Shermack coil

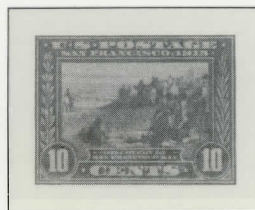


UNITED STATES

Panama-Pacific Exposition

1913

Perf. 12

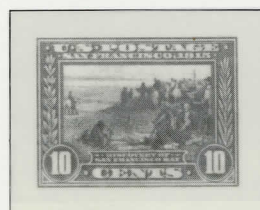
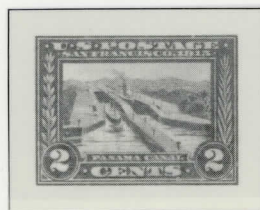


400



1914/15

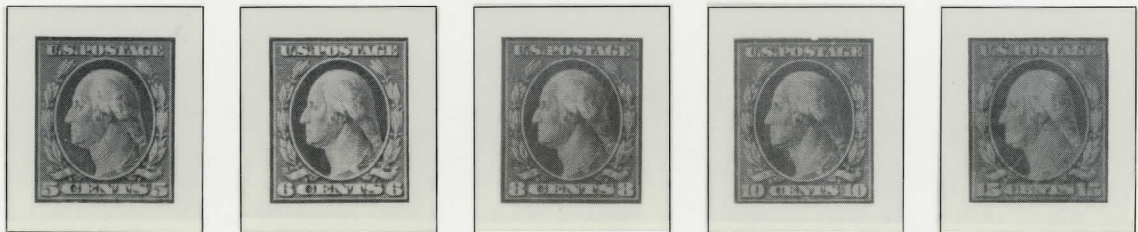
Perf. 10



UNITED STATES

Single Line Wmk. USPS Perf. 12

1910/11



1911 Imperf.

Registration Stamp

408

1912 Imperf.

409



Single Line Wmk.

1912/14

Perf. 12

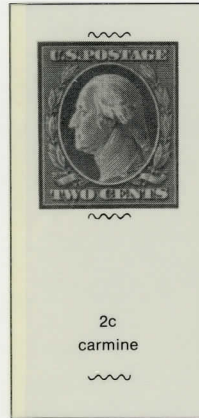
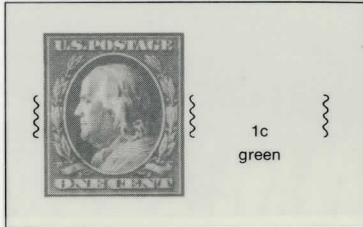


UNITED STATES

4385 Coil Stamps

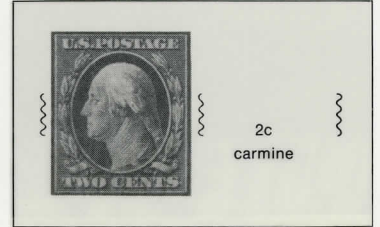
USPS

Single Line Wmk.



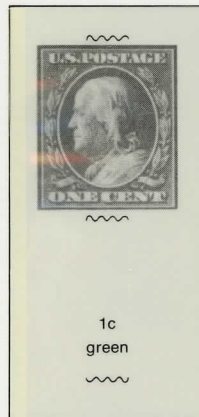
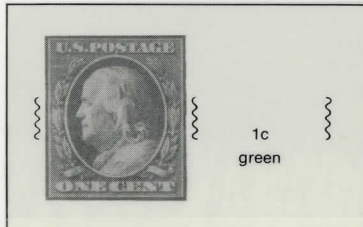
1910/11

Perf. 12



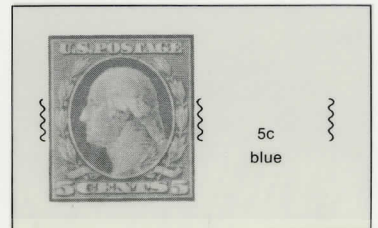
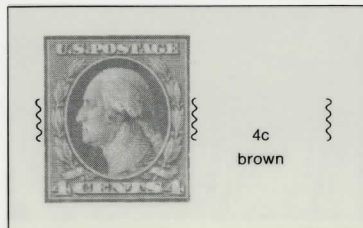
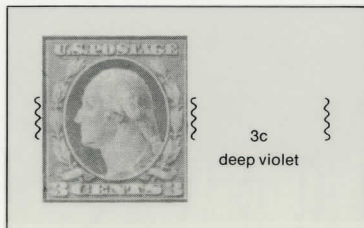
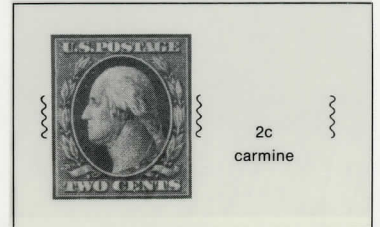
USPS

Single Line Wmk.



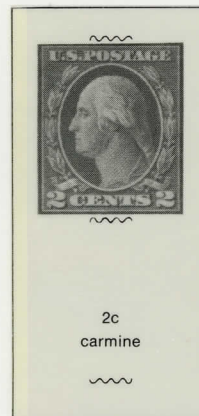
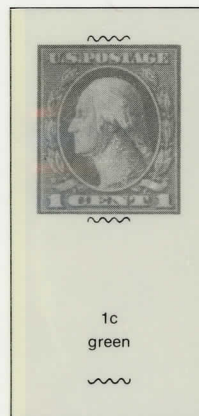
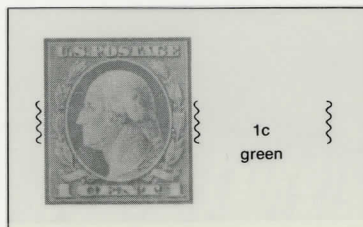
1910/13

Perf. 8 1/2



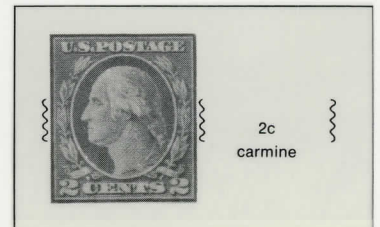
USPS

Single Line Wmk.



1912

Perf. 8 1/2



UNITED STATES

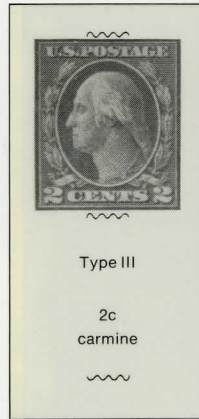
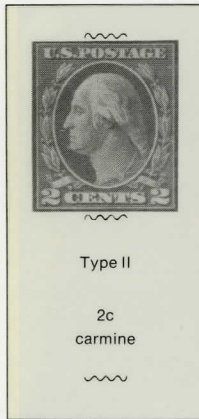
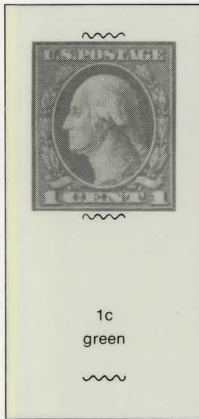
Rotary Press — Coil Stamps — Unwatermarked

18.5—19 x 22.5 mm

1916/19

Perf. 10

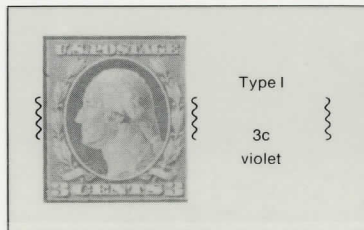
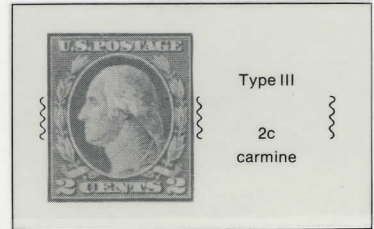
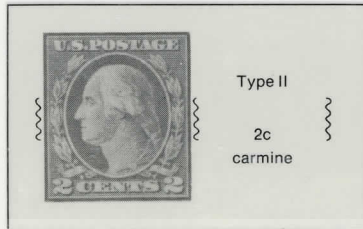
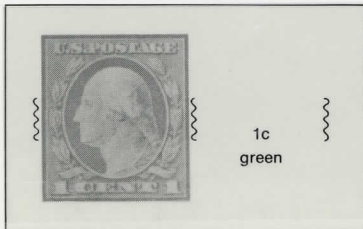
489



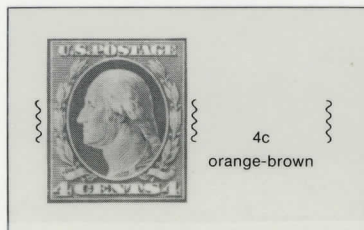
19.5—20 x 22 mm

1916/22

Perf. 10



494



496



497



UNITED STATES

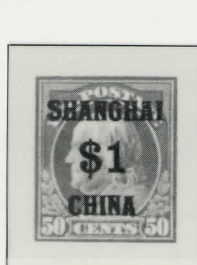
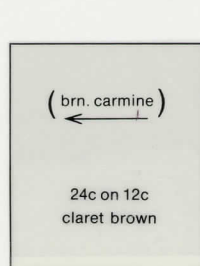
U.S. Postal Agency in Shanghai, China

Surcharged on 1917/19 Flat Plate Printings

Unwmkd.

1919

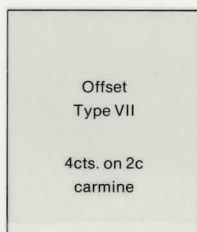
Perf. 11



Local Surch.

1922

Perf. 11



UNITED STATES

Unwmkd. — Flat Plate Printing — Perf. 11

1918



547 1920

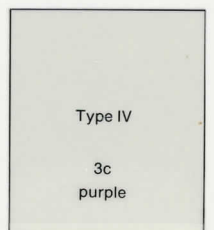
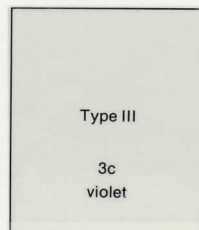
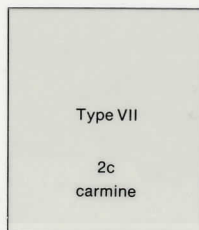
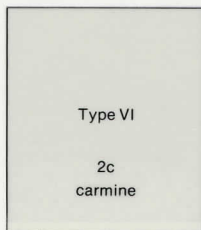
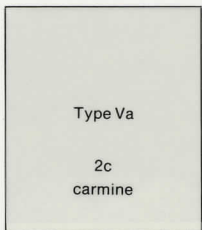
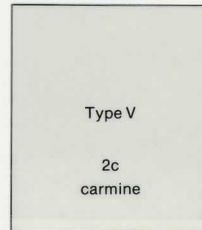
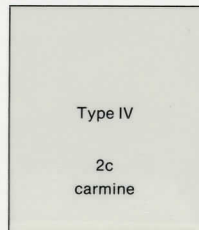
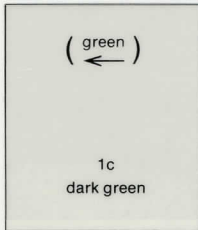
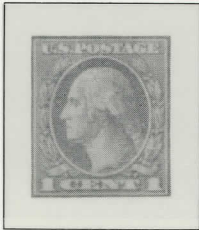


524 1918

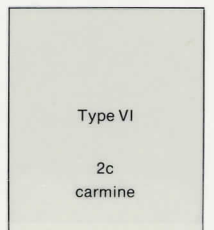
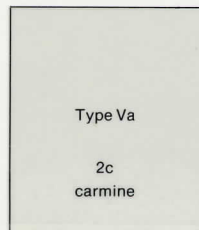
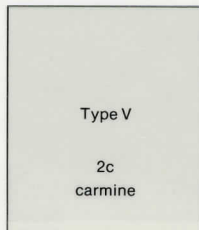
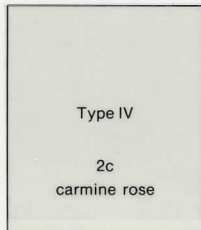
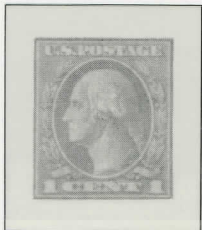


Unwmkd. — Offset Printing — Perf. 11

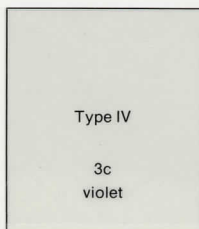
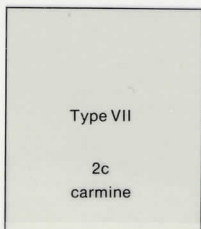
1918/20



Imperforated



536 Perf. 12½



UNITED STATES

Victory Issue



Pilgrim Tercentenary Issue



Harding Memorial Issue



19x22.5 mm

Huguenot-Walloon Tercentenary Issue



UNITED STATES

#617



1925

#618



#619



1925

#620



#621



1926

#629



1926

#627



#628



1927

#644



1927

#643



1928

#647



#648



1928

#646



1928

#645



1928

#649



#650



UNITED STATES

Battle of White Plains

International Philatelic Exhibition Souvenir Sheet

1926

3630

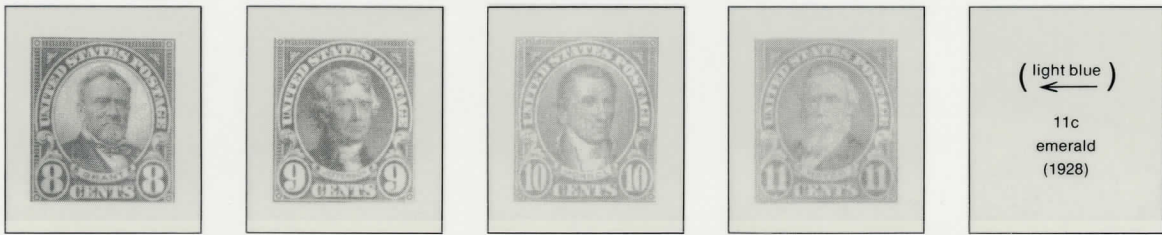
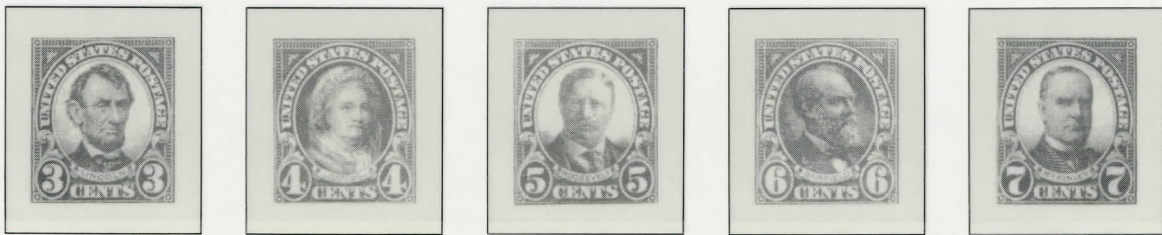


First U.S. Souvenir Sheet

UNITED STATES

Unwmkd. — Flat Plate Printing — Perf. 11

1922/26



(light blue)
←
11c
emerald
(1928)

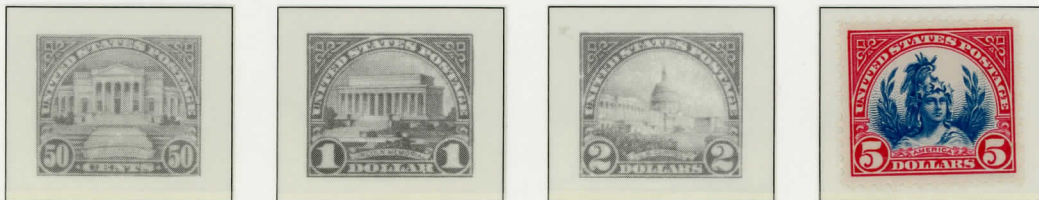


Sc. 622/SG 626



Sc. 623/SG 627

593



UNITED STATES

Unwmkd. — Rotary Press Printing — Perf. 11:10½

1926/34

					(Type I carmine) ← Type I 2c carm. lake
Sc. 653/SG 633	Sc. 632/SG 634	Sc. 633/SG 635	Sc. 684/SG 685	Sc. 634/SG 636	Sc. 634b/SG 636b
(1928) Type II 2c carmine		(violet) ← Re-issue 1934 3c bright violet			
Sc. 634 A/SG 637	Sc. 635/SG 638		Sc. 685/SG 686	Sc. 685/SG 686	Sc. 637/SG 640
				(1927 rose) ← (1931) 9c orange red	
Sc. 692	Sc. 693	Sc. 694	Sc. 641b/SG 644	Sc. 641/SG 644b	Sc. 694
			(yellow green) ← 13c blue green		
Sc. 692/SG 692	Sc. 698	Sc. 694b/SG 694b		Sc. 695	Sc. 696
Sc. 697	Sc. 698	Perf. 10½:11 Sc. 699	Sc. 700	Sc. 701	
		1932			
		Sc. 720/SG 720			
					Perf. 11:10½

UNITED STATES

1929

Regular Issue of 1926—27

Overprinted Kans.

Rotary Press Printing

Perf. 11:10½



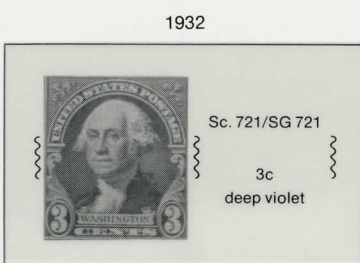
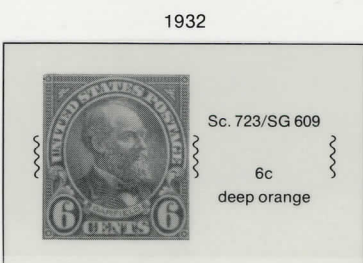
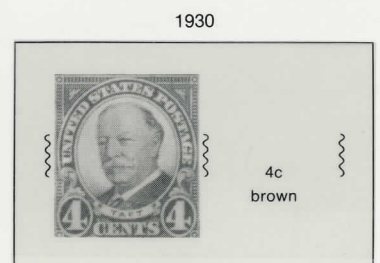
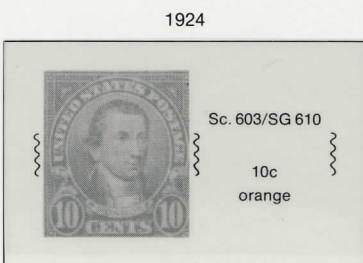
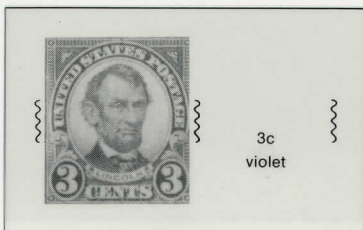
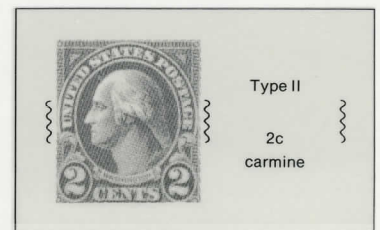
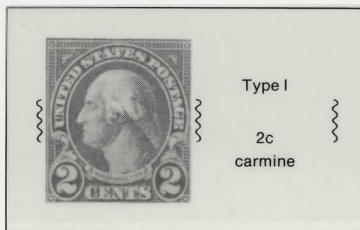
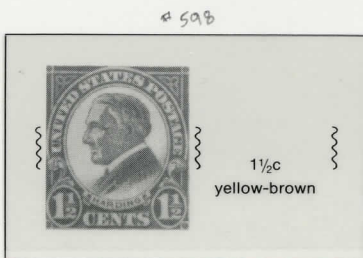
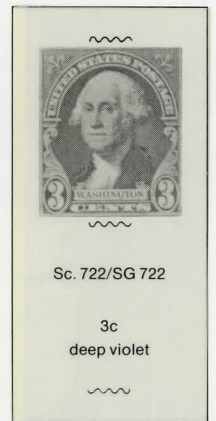
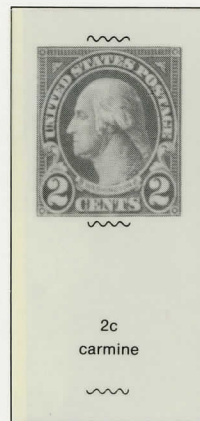
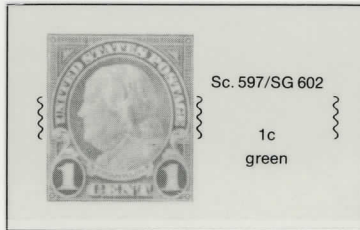
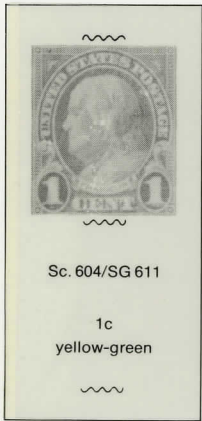
UNITED STATES

Coil Stamps

Rotary Press Printing

Perf. 10

1923/32



UNITED STATES

1929



Perf. 11



Perf. 11:10½



Rotary Press



1930



20168



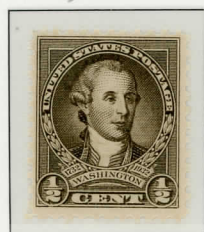
1931



UNITED STATES

1932

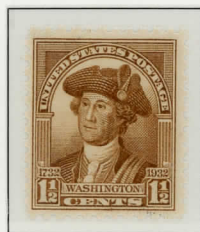
704



705



706



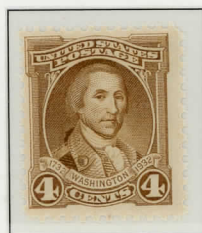
707



708



709



710



711



712



713



714



715



724



717



725



718



716



719



UNITED STATES

1933

Flat Plate Printing — Perf. 11 — Gummed



Rotary Press — Perf. 10½ : 11 — Gummed



Sc. 727/SG 726

Sc. 732/SG 731

Single Stamps from 1933/34 Souvenir Sheets

Imperforated

1933

Ungummed



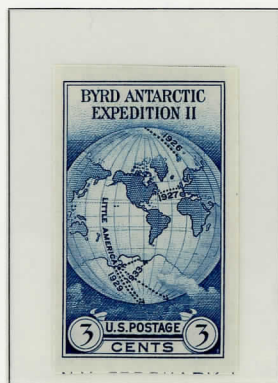
Sc. 730a/SG 729a

Ungummed



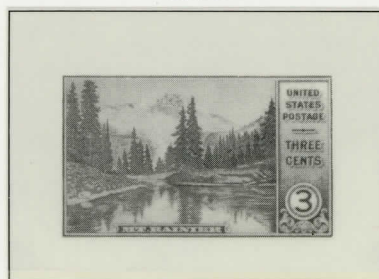
Sc. 731a/SG 730a

Ungummed



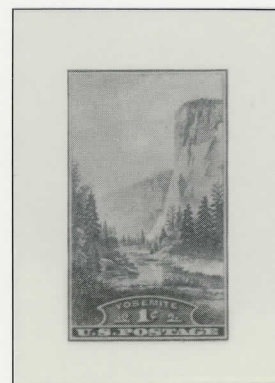
Sc. 735a/SG 734a

Gummed



Sc. 750a/SG 749a

Gummed



Sc. 751a/SG MS 750a

UNITED STATES

„Century of Progress“ International Exhibition

Souvenir Sheet Commemorating the
American Philatelic Society Convention in Chicago, Illinois

Imperf.

1933

730

Ungummed



Sc. 730/SG MS 729

UNITED STATES

„Century of Progress“ International Exhibition

Souvenir Sheet Commemorating the
American Philatelic Society Convention in Chicago, Illinois

Imperf.

1933

4731

Ungummed



Sc. 731/SG MS 730

UNITED STATES

Byrd Antarctic Expedition of 1933

Souvenir Sheet for the National Stamp Exhibition
held in New York, N. Y., in Febr. 1934

Imperf. 1934 *# 735* Ungummed



Sc. 735/SG MS 734

UNITED STATES

Flat Plate Printing

1934

Perf. 11 (with gum)



#737

Rotary Perf. 11 : 10½

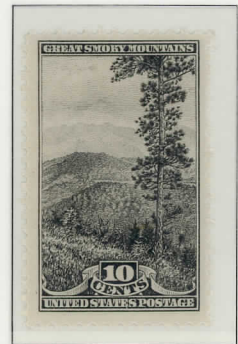
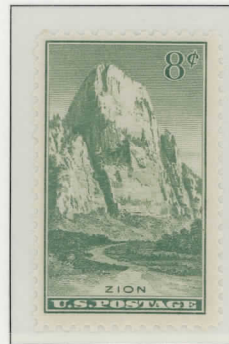
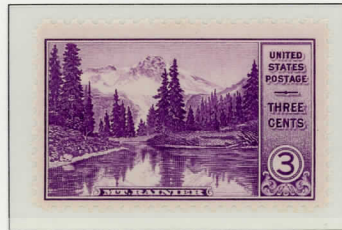


#738

Flat Plate Perf. 11



National Parks



UNITED STATES

Imperf.

1934 # 750

Gummed



751



UNITED STATES

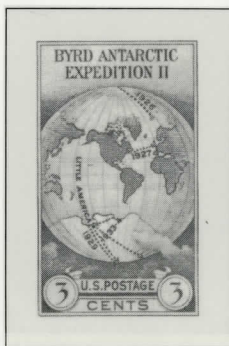
Farley Special Printings

1935

Issued without gum.

Perf. 11

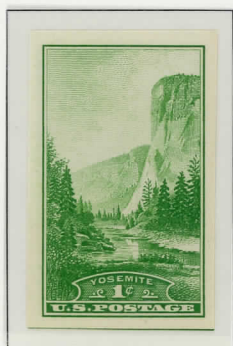
Imperf.



Imperf.



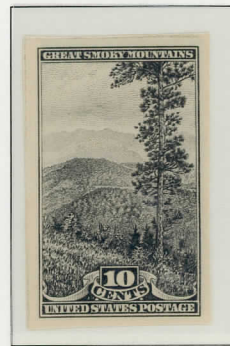
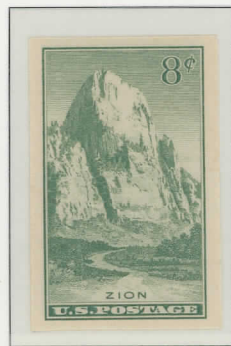
Imperf.



Perf. 10½ : 11



Imperf.



Sc. 771/SG 770

UNITED STATES

Farley Special Printings

1935

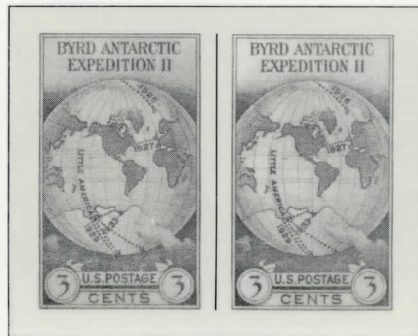
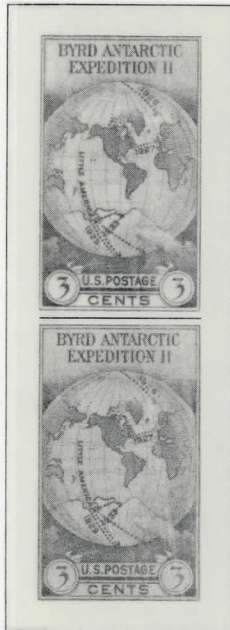
Issued without gum



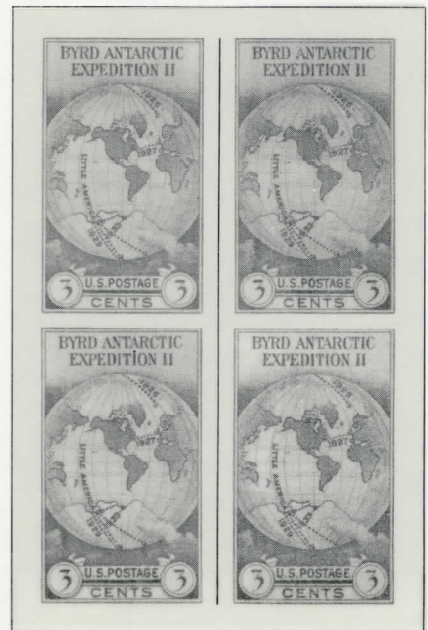
Perf. 10½ : 11



Sc. 752/SG 751



Perf. 11



Sc. 753/SG 752

Imperforated



Sc. 754/SG 753



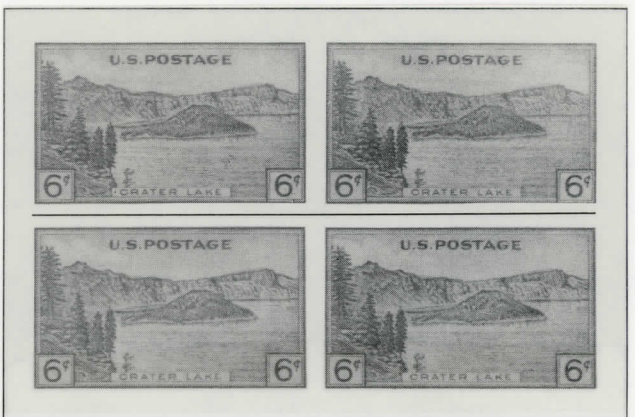
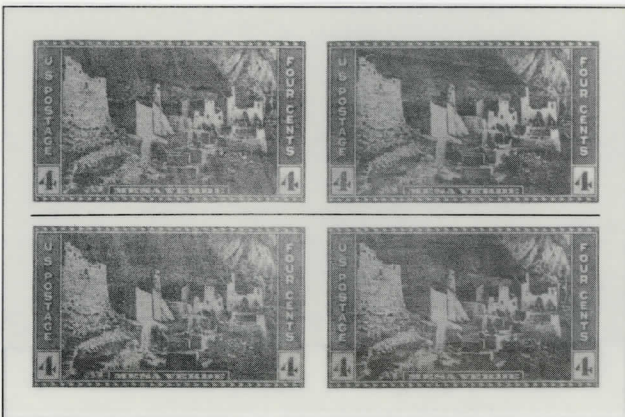
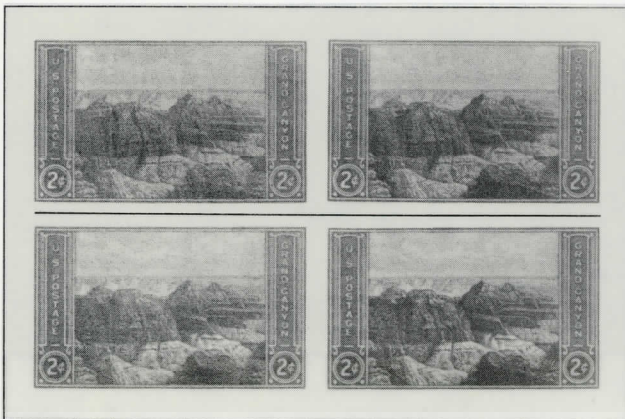
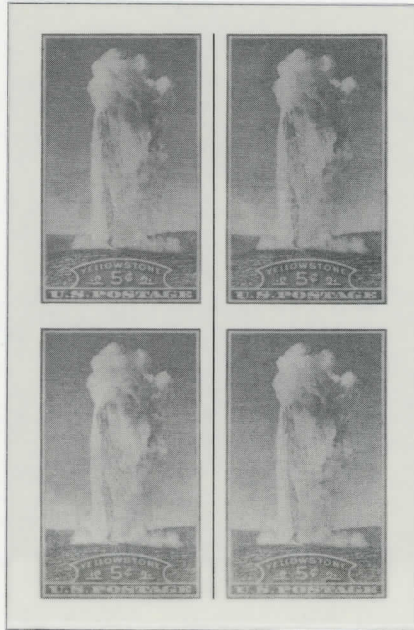
Sc. 755/SG 754

STATES

Farley Special F

335

Imperf. ungummed

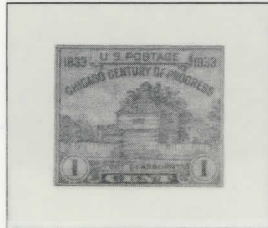


UNITED STATES

Farley Special Printings

1935

Imperf. ungummed



Sc. 766 a / SG 765 a



Sc. 767 a / SG 766 a

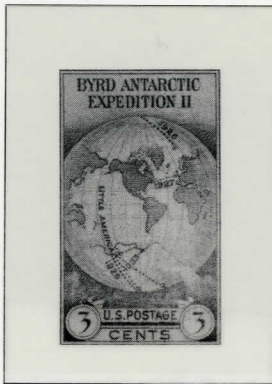


UNITED STATES

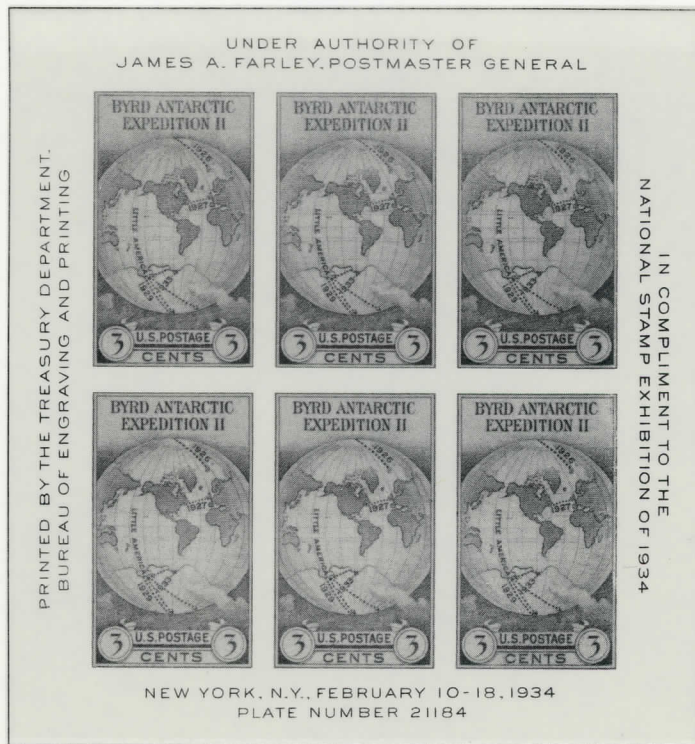
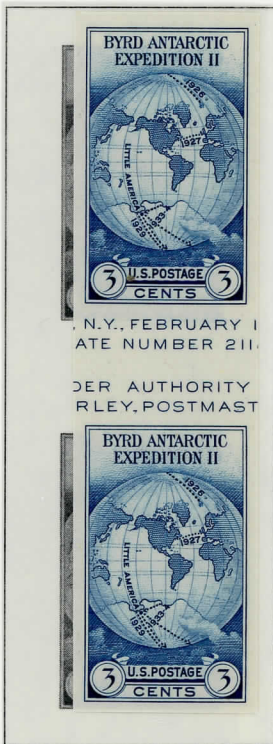
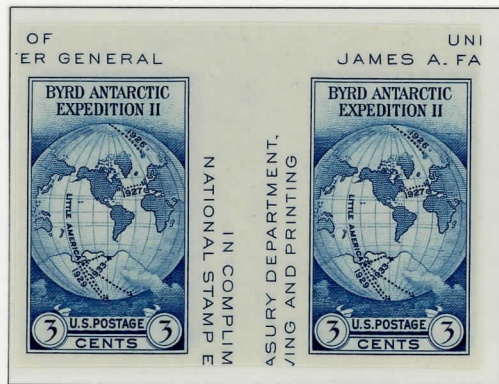
Farley Special Printings

1935

Imperf. ungummed



Sc. 768 a/SG 767 a



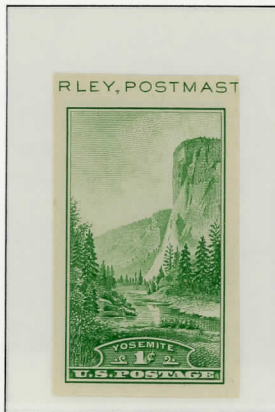
Sc. 768/SG MS 767

UNITED STATES

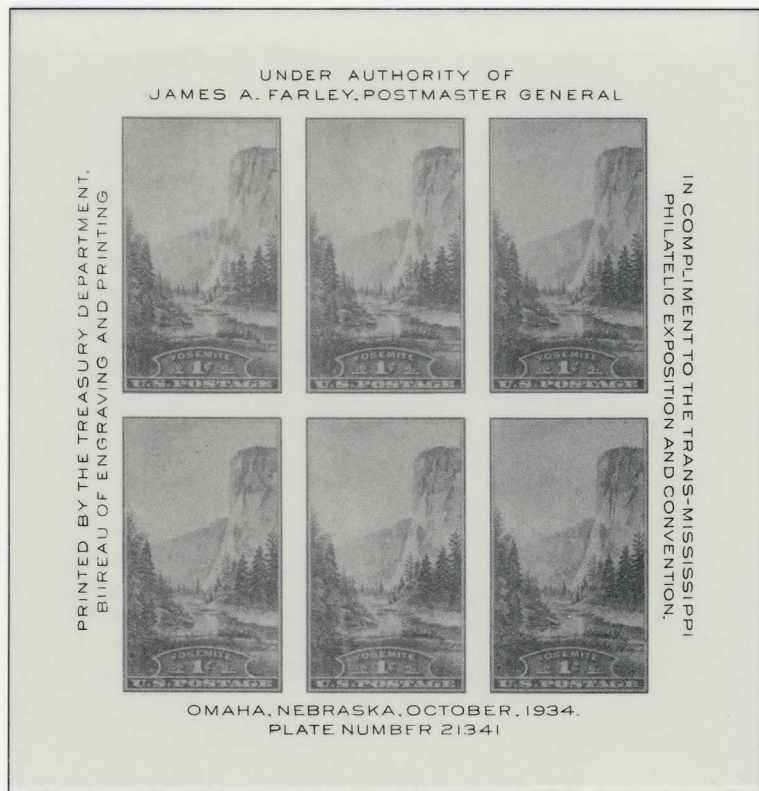
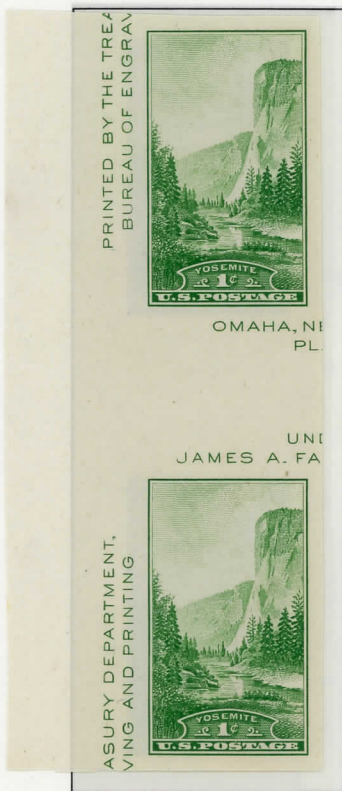
Farley Special Printings

1935

Imperf. ungummed



Sc. 769 a/SG 768 a



Sc. 769/SG MS 768

UNITED STATES

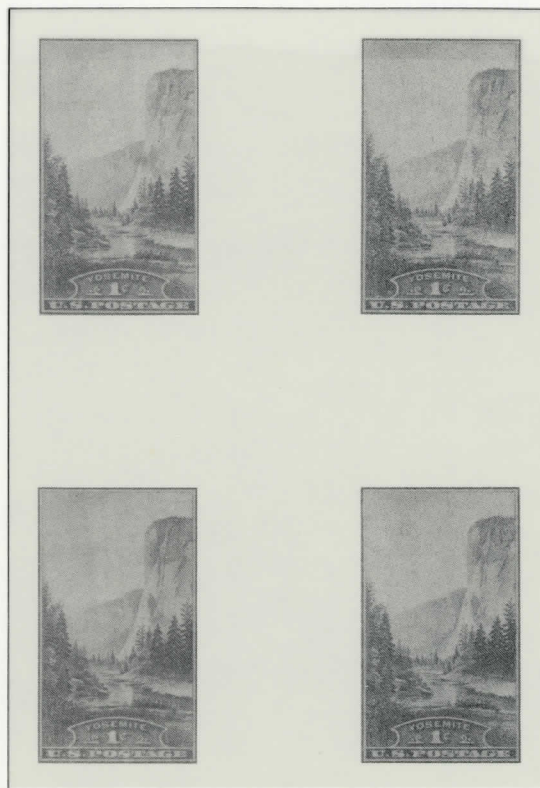
Farley Special Printings

1935

Imperf. ungummed



Horiz. gutter block



Crossed gutters block



Sc. 769 a/SG 768 a

UNITED STATES

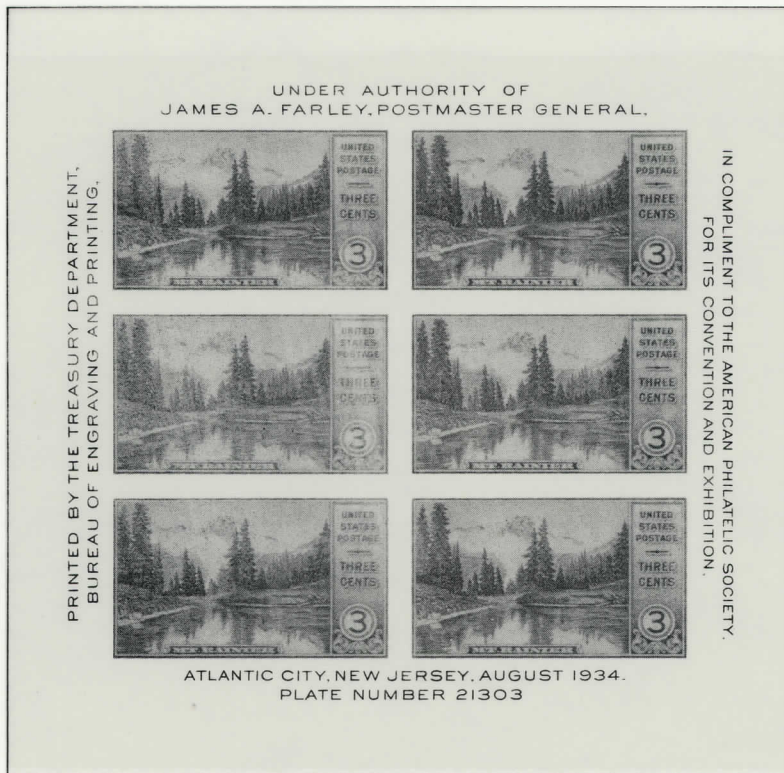
Farley Special Printings

1935

Imperf. un gummed



Sc. 770 a/SG 769 a



Sc. 770/SG MS 769

UNITED STATES

1935/36

#772



#773



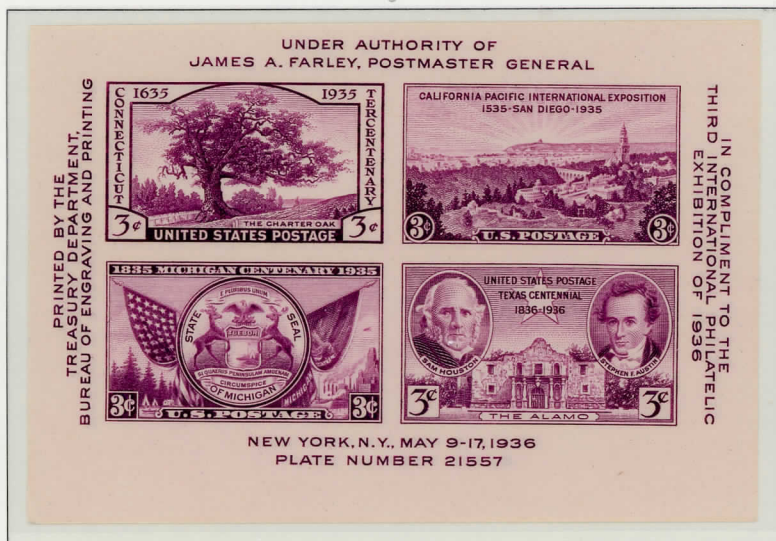
#775



#776



#778



#774



#777



Imperf. Singles from TIPEX Sheet A



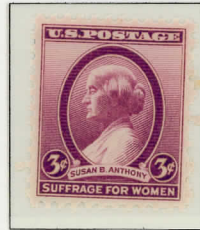
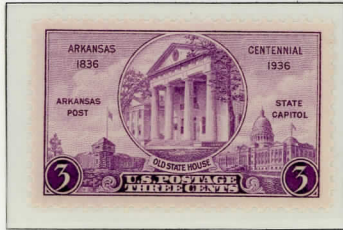
C



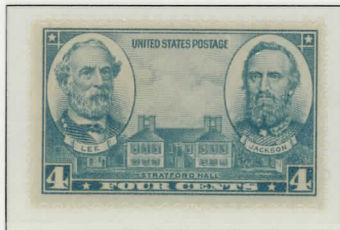
Cat From plate # 21558

UNITED STATES

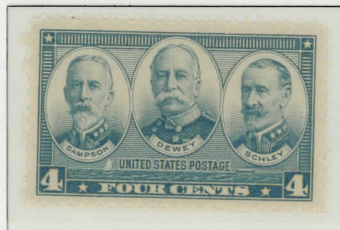
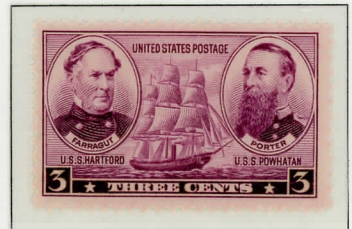
1936/37



Army Series



Navy Series



UNITED STATES

1937

#799



#800



#801



#802



#795



#796



#798



#797

UNDER THE AUTHORITY OF
JAMES A. FARLEY, POSTMASTER GENERAL.

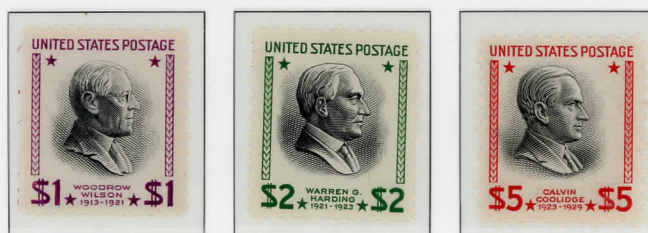
PRINTED BY THE
 TREASURY DEPARTMENT,
 BUREAU OF ENGRAVING AND PRINTING.

IN COMPLIMENT TO THE
 43RD ANNUAL CONVENTION OF THE
 SOCIETY OF PHILATELIC AMERICANS.

ASHEVILLE, N. C., AUGUST 26-28, 1937.
 PLATE NUMBER 21696

UNITED STATES

1938/54



UNITED STATES

Coil Stamps

1939

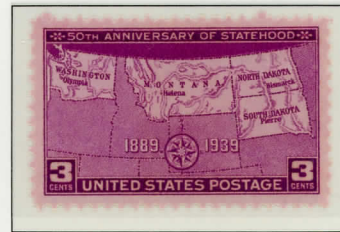
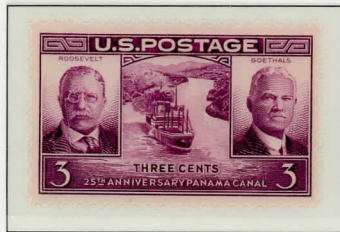
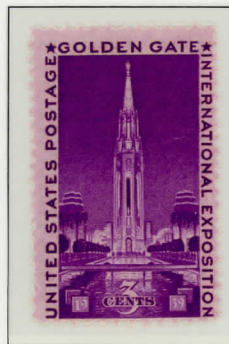
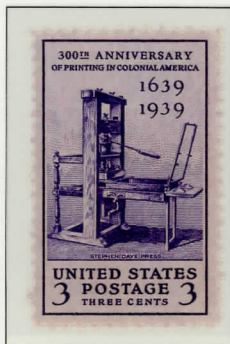


UNITED STATES

1938



1939

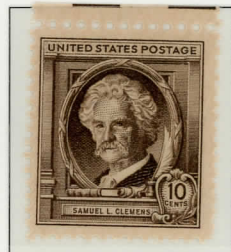
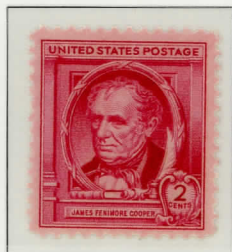


UNITED STATES

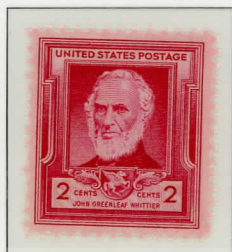
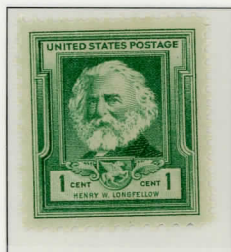
1940

Famous Americans

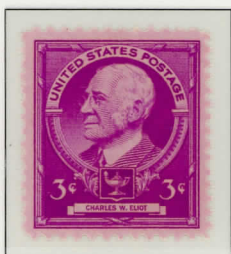
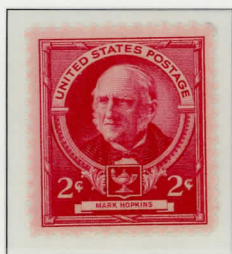
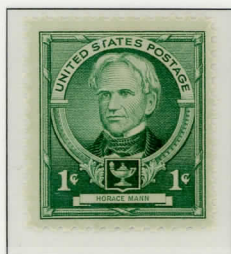
Authors



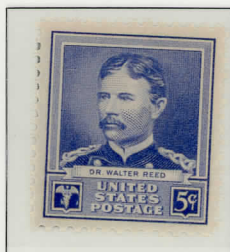
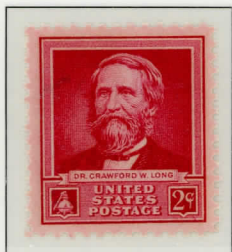
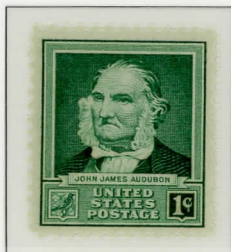
Poets



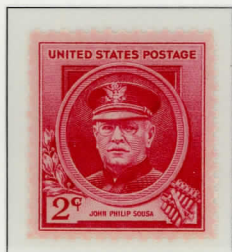
Educators



Scientists



Composers

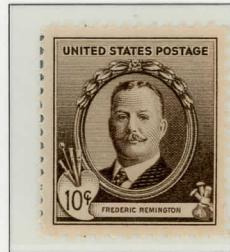
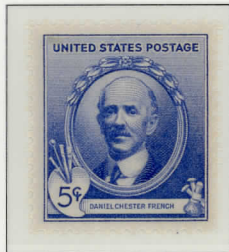
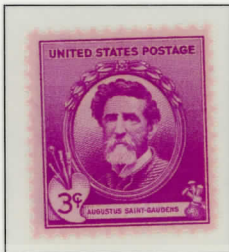


UNITED STATES

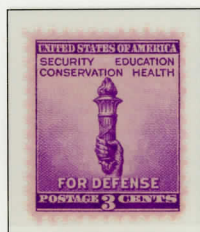
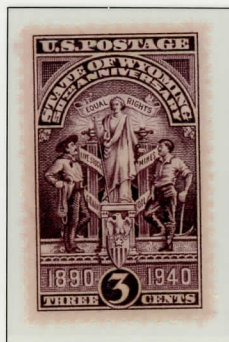
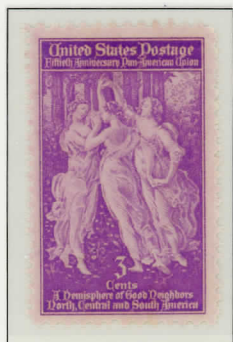
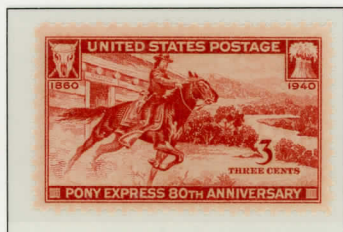
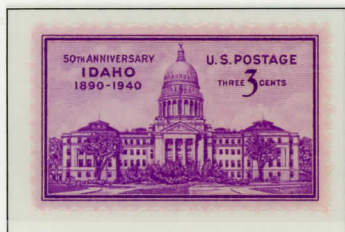
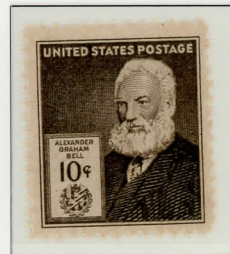
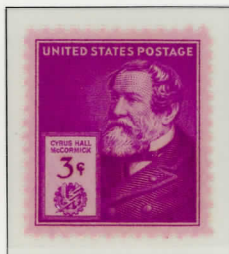
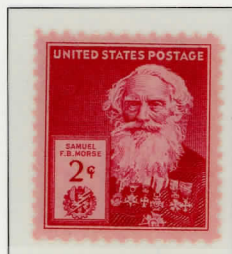
1940

Famous Americans

Artists



Inventors



UNITED STATES

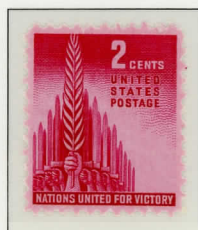
1941



1942



1943



1944



UNITED STATES

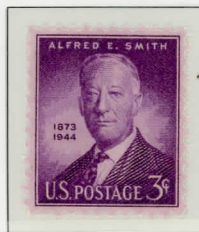
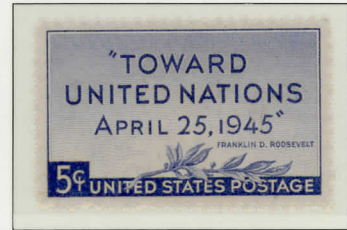
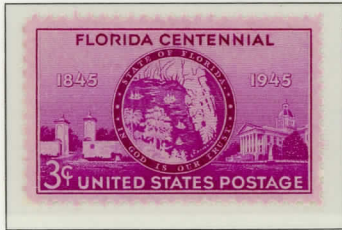
Overrun Countries Issue

1943/44



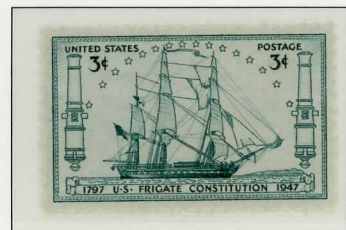
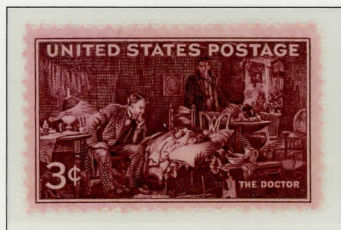
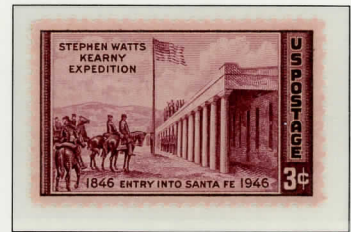
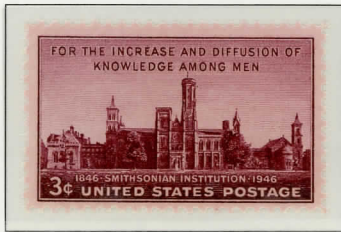
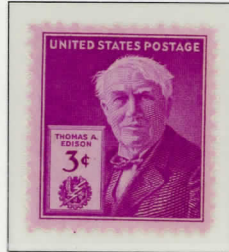
UNITED STATES

1945/46



UNITED STATES

1946/47

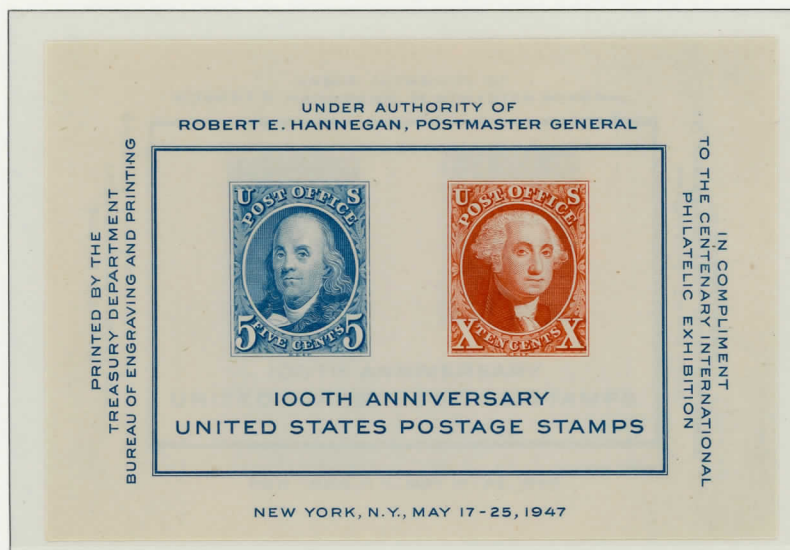


UNITED STATES

1947

„CIPEX“ Souvenir Sheet, Imperf.

z 948



Imperf. Singles from „CIPEX“ Sheet

a

b

