

UNITED STATES

Air Mail

1918

c-1



c-2



c-3



1923

c-4



c-5



c-6



1926/27

c-7



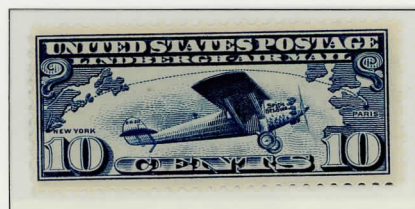
c-8



c-9



c-10



1928

c-11



UNITED STATES

Air Mail

1930

c-13



c-14



c-15



UNITED STATES

Air Mail

1933 C-18



1930 C-12

1931 C-16



1932 C-17

1934 C-19

1939 C-24



1935 C-20

1937 C-21

1937 C-22



1938 C-23



Air Mail Special Delivery

1934 C8-1

1936 C8-2



dark blue

red & blue

UNITED STATES

Air Mail

1941/44

c-25



c-26



c-27



c-28



c-29



c-30



c-31



UNITED STATES

Air Mail

1947

c-33



1946

c-32



1949

c-39



1947

c-34



c-35



c-36



1948

c-38



UNITED STATES

Air Mail

1949

c-40



c-42



c-43



c-44



c-45



1952

c-46



1953

c-47



1957

c-49



1954

c-48



1958

c-50



1960

c-60



carmine

1958

c-51



blue

1962

c-64



carmine

UNITED STATES

Air Mail

Coil Stamps

1948

c-37



1949

c-39



1958

c-51



1960

c-60



1962

c-65



UNITED STATES

Air Mail

c-57

1959/61

c-62



c-58

c-59

c-63



1959 c-53

1959 c-55

1963 c-66



1959 c-54

1959 c-56

1963 c-68



1963 c-67



UNITED STATES

Air Mail

1964

c-69



1967

c-70



1969

c-76



1967

c-71



1968

c-74



1971

c-80



1968

c-75



1971

c-81



UNITED STATES

Air Mail

1971
c-77



1968
c-78



1971
c-78



1973
c-79



1972
c-84



1972
c-85



1973
c-86



1974
c-87



c-88



UNITED STATES

Air Mail

Coil Stamps

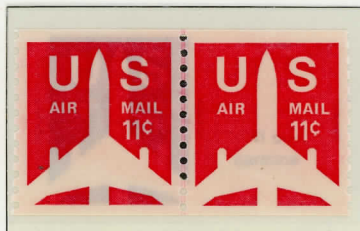
1968

c-73



1971

c-82



1973

c-83



UNITED STATES

Air Mail

1976



1979



1979



1978



1980



1979



UNITED STATES

Air Mail

1983

C-109/112



C-101/104



C-105/108



UNITED STATES

Air Mail

1983

C-101



C-102



C-103



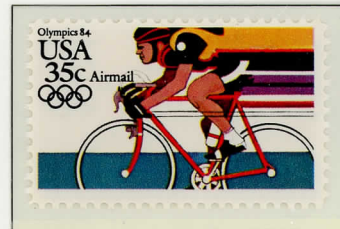
C-104



C-109



C-110



C-111



C-105



C-112



C-104



C-107



C-108



UNITED STATES

Air Mail

1985

C-113

Aviation Pioneers

C-114



Inventor, Verville-Sperry
R-3 Army Racer



Aircraft Designers,
First Seaplane

50th Anniv. Transpacific Airmail

C-115



Martin M-130 „China Clipper“

Fr. Junipero Serra (1713/84)

C-116



founded numerous missions
throughout California

UNITED STATES

Air Mail

1988 (Block Tagged)

Arrival 1638 of Swedish and Finnish Colonists at what is now Wilmington, Delaware. *C-117*



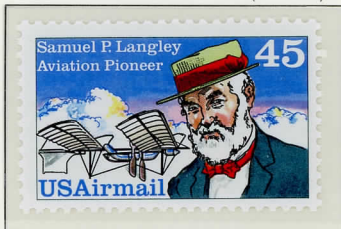
1938 Commemoration:
Sc.836, SG846, Mi.444

1989 (Block Tagged) *C-120*
French Revolution Bicentennial



1988: Aviation Pioneers

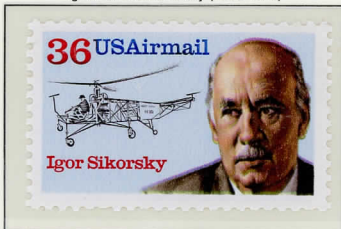
Astronomer and Aeronautics Pioneer (1834-1906) *C-118*



Block Tagged

1896.5.6 Testflight of unmanned AERODROME 5

Igor Ivanovich Sikorsky (1889-1972) *C-119*



Phosphor taggant mixed with background color ink

1939.9.14 Testflight of VS-300 Helicopter

Future Mail Transportation *C-122/125*



Overall tagged

Souvenir Sheet *C-126*

20th Universal Postal Congress



A glimpse at several potential mail delivery methods of the future is the theme of these four stamps issued by the U.S. in commemoration of the convening of the 20th Universal Postal Congress in Washington, D.C. from November 13 through December 14, 1989. The United States, as host nation to the Congress for the first time in ninety-two years, welcomed more than 1,000 delegates from most of the member nations of the Universal Postal Union to the major international event.

©USPS 1988



Hypersonic Airliner soaring through space



Hovercraft Mail Vehicle riding on cushion of air



Surface Rover Vehicle delivering to space colony



Shuttle involved in a mid-space mail transfer

Overall tagged

UNITED STATES

Air Mail

Overall Tagged

— 1989/91 —

Ganzflächig phosphoreszierend

"PUASP" Series of 'AMERICA' Stamps

During 1985-88 the then 24 member nations of the **POSTAL UNION OF THE AMERICAS, SPAIN**, and eventually **PORTUGAL** as well, had recommended that member states issue during 1989 through 1992 an omnibus **"AMERICA" Stamp Series** that was to appropriately lead up to the 1992 celebrations of the 500th anniversary of Christopher Columbus' discovery of America.

The United States issued a total of five such stamps, viz: 2 commemorative and 3 air post stamps.

Pre-Columbian Artifacts
1989.10.12 *C-121*

Natural Surroundings seen by explorers
1990.10.12 *C-127*



Caribbean Tropical Coastline



"Key Marco Cat" carved by Calusa Indians of South Florida

Prehistoric Voyages of Discovery *C-131*
1991.10.12



Arctic Tundra Crossroads of Continents

Pioneers of Aviation Series

(XIII) 1991.4.27 *C-128*

First woman in America to receive a pilot's license



Harriet Quimby (1875-1912) and her 70 HP Bleriot Monoplane

(XIV) 1991.5.17 *C-129*

Maker of the famous Piper Cub light airplanes



Wm. T. Piper (1881-1970) and Model J-3 Cub #N6233H

30th Anniversary of ANTARCTIC TREATY

1991.6.21 *C-130*

U.S. Icebreaker "Glacier" in the McMurdo Sound with the 'Observation Hill' on Ross Island in background



For other Antarctica stamps see
1933: Sc. 733 / SG 732 / Mi. 359
1971: Sc. 1431 / SG 1432 / Mi. 1041
1988: Sc. 2386-89 / SG 2370-73 / Mi. 2004-07

UNITED STATES

Special Delivery Stamps

Unwatermarked - Perf. 12

1885



E-1

1888



E-2

1893



E-3

1894



Line under "TEN CENTS" E-4

Double Line USPS Wmk. - Perf. 12

1895



E-5

1908



E-7

1902



E-6

Single Line USPS Wmk.

1911

Perf. 12



E-8

1914

Perf. 10



E-9

Unwatermarked

1916

Perf. 10



E-10

1917

Perf. 11



E-11

UNITED STATES

Special Delivery Stamps

Unwatermarked - Perf. 11

1922



36 x 21 1/2 mm E-12

1925



36 1/2 x 21 1/2 mm E-13

1925



35 1/2 x 21 1/2 mm E-14

1927 Perf. 11 : 10 1/2



36 1/2 x 21 1/2 mm E-15

Unwatermarked - Perf. 11 : 10 1/2

1931



E-16

1944



E-17

1944



E-18

1951



36 1/2 x 22 mm E-19

1954



E-20

1957



E-21

UNITED STATES

Special Delivery Stamps

Unwatermarked - Perf. 11

1969



45 - 22

1971



60 - 23

UNITED STATES

Official Mail (Penalty Mail Stamps)

1983/85

Perf. 11



0-127



0-128

1985

1985



0-129



(14 c) 0-138



0-129A



0-130



0-132



0-133

Coil Stamps

Perf. 10 Vert.



0-135



0-139



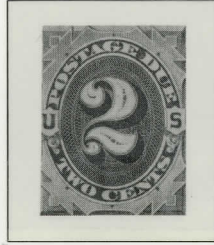
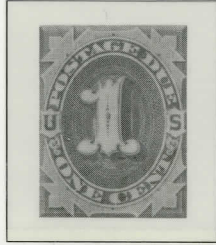
0-136

UNITED STATES

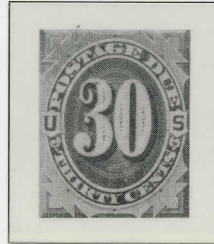
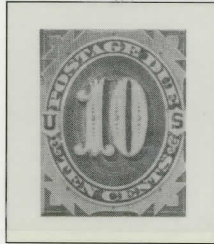
Postage Due Stamps

Perf. 12 - 1879 - Brown

J-3



J-4

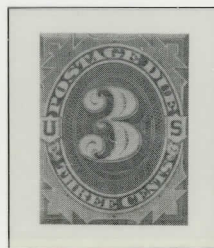


Sc. J 7/SG D 213

50 c
brown

J-15

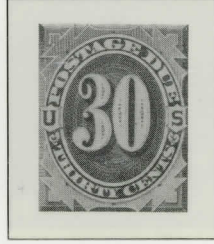
Perf. 12 - 1884/89 - Red Brown



J-18



J-19

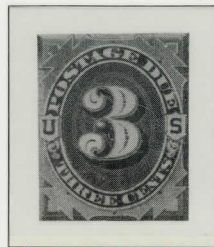


Sc. J 21/SG D 227

50 c
red brown

J-22

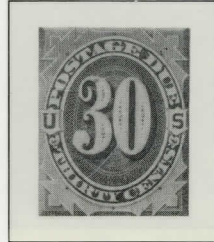
Perf. 12 - 1891/93 - Claret



J-25



J-26



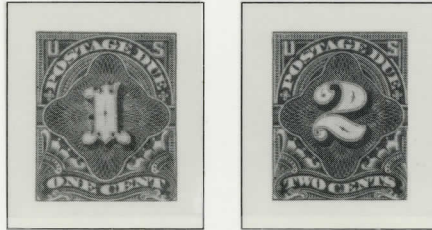
Sc. J 28/SG D 241

50 c
claret

UNITED STATES

Postage Due Stamps

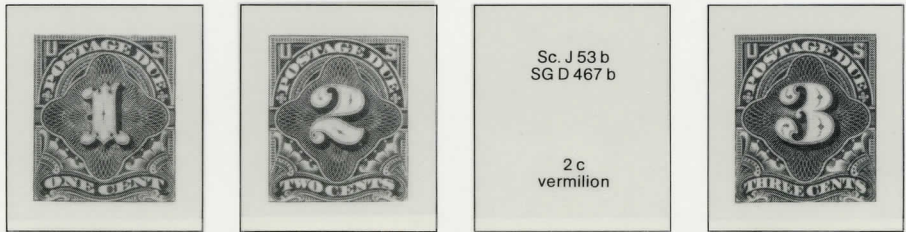
Single Line Wmk. USPS - 1910/12 - Perf. 12, Deep Claret



(1912)
Sc. J 50
SG D 409

50 c
deep claret

Single Line Wmk. USPS 1914/15 Perf. 10, Carmine Lake



Sc. J 53 b
SG D 467 b

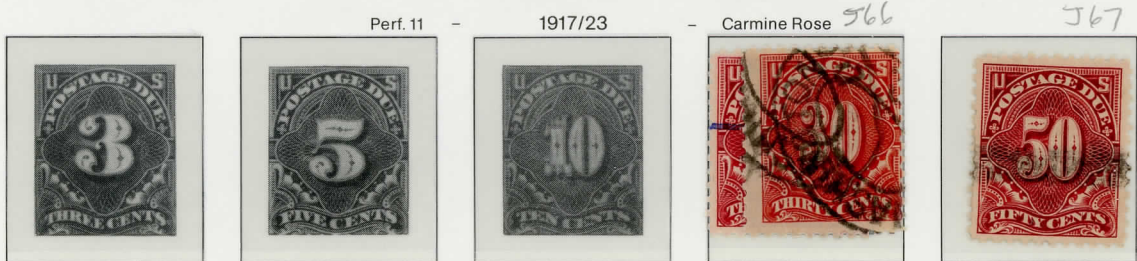
2 c
vermilion



Sc. J 58
SG D 472

50 c
carmine lake

1916 Perf. 10-Rose Unwatermarked 1925 Dull Red 1917/23 Perf. 11-Carmine Rose



Perf. 11 - Carmine Rose *J66*

J67

UNITED STATES

Postage Due Stamps

1959/85

Unwatermarked — Perf. $11 \times 10\frac{1}{2}$ — Untagged



carmine-rose

J-88



J-89



and black

J-90



J-91



J-92



J-93



J-94

1978



J-95

1978



J-96

1985



J-97



J-102



J-103



J-104



J-98



J-99



J-100

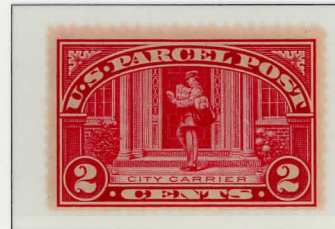


J-101

UNITED STATES

Parcel Post Stamps

1912/13



UNITED STATES

Parcel Post Postage Due Stamps

1912



green



Special Handling Stamps

for use on parcel post packages

1925



deep green

1928



yellow green

1929



yellow green