

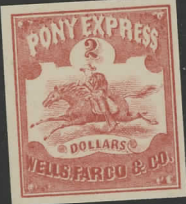
Wells Fargo & Co.

#143L1
Genuine

Original



#143L1
Reprint



#143L2
Genuine

Original



#143L2
Reprint



#143L3
Genuine

Original



#143L3
Reprint



#143L4
Genuine

Original



#143L4
Reprint



Reprint

#143L5
Genuine



#143L5
Reprint



#143L6
Genuine



#143L6
Remainder

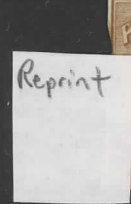


#143L6
Remainder

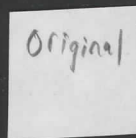
#143L7
Genuine



#143L7
Reprint



#143L8
Genuine

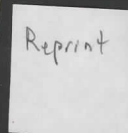


#143L8
Reprint



#143L9
Reprint

#143L9
Genuine



Reprint Cliches
25 cents & 10 cents



Reprint Cliches
\$2.00 & \$1.00



Forgeries

Most Type descriptions are from Elliott Perry's "Pat Paragraphs"
Descriptions are from various sources. Stimmell Types from GS file.

Type F1
Small "D" in "Dollars". Large stop after "WELLS". Rider has fat face.
Reported in green and black.



Type F2
Open first "S" in "EXPRESS". Rider has priest's collar and a blunt leg.
Reported in green, pale red and maroon

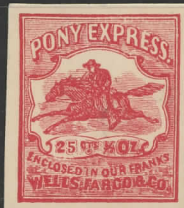
Type F3
Rider has priest's collar. His peg leg comes to a sharp point.
Known in green, black and red.

Type F4 ^A
Thin letters in "PONY EXPRESS".
Right hind leg of horse clearly shown. Large hoofs. Rider bearded.
Horse dark and lacks eyes. 20+ colors.

Type F5
 "X" ("EXPRESS") is thin. Horse lacks ears. Vertical shading on horse's face. Rider's leg hits "DOLLAR" label. Red, green, black & blue reported.



Type F6
 Background: Horiz. lines w/o cross-hatching. No "IF" under entablature of small values. Flat top tail. Wide hat. 3-legged horse. Red, blue yellow brown



Type F7
 Real foot on rider. Rider is fat. Letters in "4" [where applic.] & "DOLLAR" narrower than on Type F1. Light yellow green, red & black.



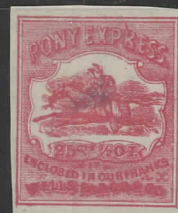
Type F8
 Very similar to Type F5, but with thicker "X" in "EXPRESS". Reported in red.

Type F9
 Similar to Types F5 & F8, but has short, broad "D" and rounder "O" in "DOLLARS". White under the pony's tail. Wide brim hat. Red; bl/grn.

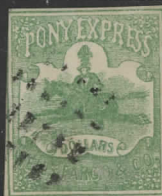


Type F10
 Crude. Background horiz. lines only. Reported in red.

Type F11
 Horiz. background lines cross "PONY EXPRESS". Rakish hat. Reported in blue, rose, carmine.



Type F12^A
Horse and rider same as Type F11,
but horse has unicorn horn. "2" is
different than other forgeries.
Reported in black.



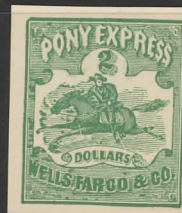
Type F13
Backgrd. is horiz. lines only. Other
details agree with \$2.00 Type F10.
Reported in red.



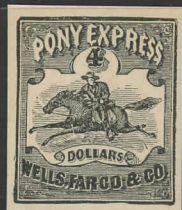
Type F14
"2" differs from other forgeries,
but other details agree with Type F7.
Reported in yellow-green.



Stimmell Type A-1
Similar to Type F6. With
white slash over stirrup.
Reported in red and green.

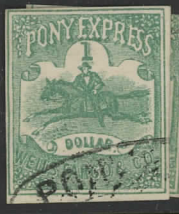


Stimmell Type A-2
Similar to Type F6. With
dark slash under rear hooves.
Reported in black and green.

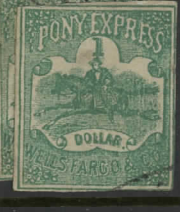


Stimmell Type B
Tiny head on rider. Thin
letters. Reported in black.

Stimmell Type C
Greasy ink woodcut. Small
horse. Crude. Reported in
black.



Forgery
A
14



Forgery
A
24



Forgery
A
38



Forgery
A
44



Forgery
"B"



B1



B2



Unlisted
Blup
B2



Forgery
B2
28



Forgery
28



Forgery
C1



Forgery
D



Forgery
E
Red
unlisted



Forgery
F



Forgery
H ?



Forgery
I ?



Forgery
J



Forgery
K



Forgery
L



Forgery
R



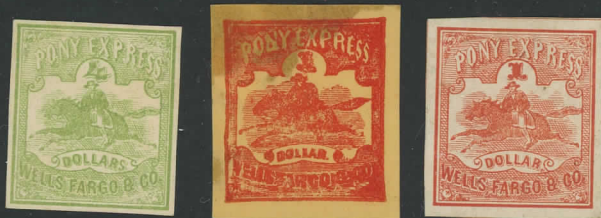
Forgery
S



Forgery
T



NOT
Listed



Forgery
QQ



Forgery
XX



Forgery
XXI



Forgery
YY



Robert A. Siegel

AUCTION GALLERIES, INC.

New York, N. Y.

459

Lot

YEAR.....

CAT. NO. 14327

CAT. PRICE 10 - +

108
5780

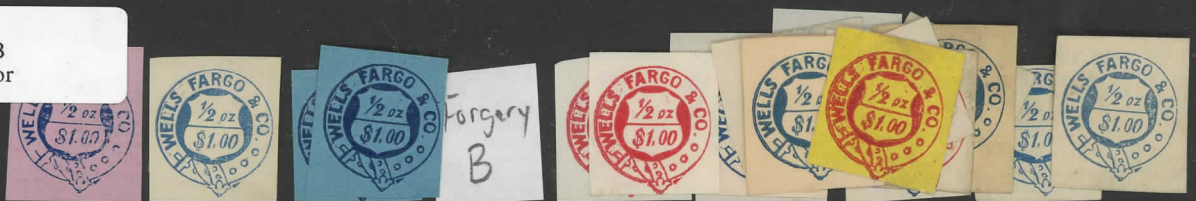


PLEASE DO NOT REMOVE FROM POCHELETTE

#143L6
Forgery A
J. W. Scott



#143L6
Forgery B
S.A. Taylor



#143L6
Forgery C
Maker unknown



unlisted



Forgery
D



1/2 OUNCE
PAID
FROM
ST. JOSEPH
TO
PLACERVILLE
PER
PONY
EXPRESS
Wells Fargo

Agent of Pony
Express,



St. Joseph, Mo.

For



FARGO & CO.

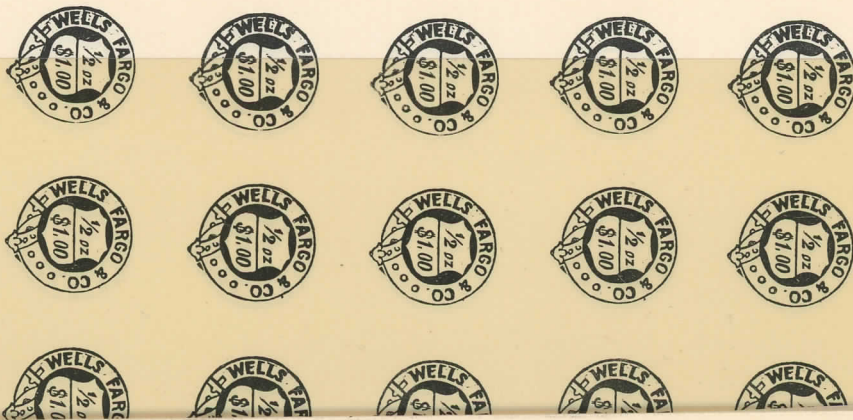
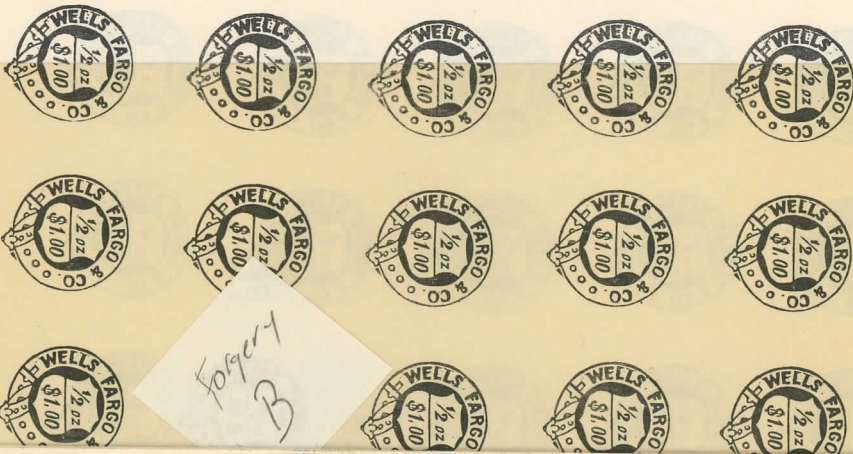
FARGO & CO.

FARGO & CO.



Forgery
B





WELLS FARGO & CO. EXPRESS PER PONY TO PLACERVILLE ST. JOSEPH FROM PAID 1/2 OUNCE

WELLS FARGO & CO. EXPRESS PER PONY TO PLACERVILLE ST. JOSEPH FROM PAID 1/2 OUNCE

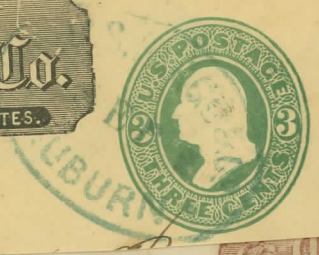
WELLS FARGO & CO. EXPRESS PER PONY TO PLACERVILLE ST. JOSEPH FROM PAID 1/2 OUNCE

WELLS FARGO & CO. EXPRESS PER PONY TO PLACERVILLE ST. JOSEPH FROM PAID 1/2 OUNCE



PAID Wells, Fargo & Co. OVER OUR CALIFORNIA AND COAST ROUTES.

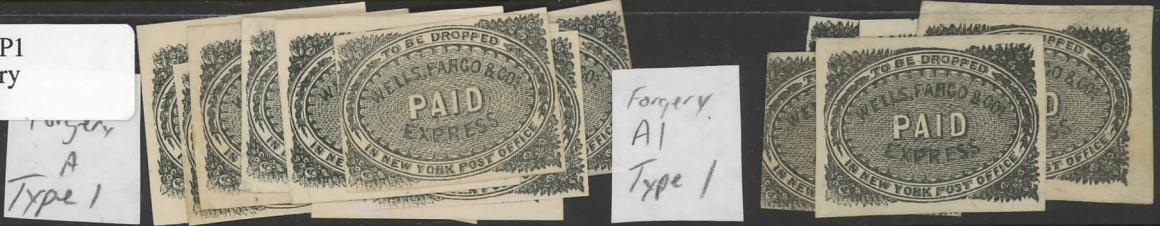
PAID Wells, Fargo & Co. OVER OUR CALIFORNIA AND COAST ROUTES.



WELLS FARGO & CO. EXPRESS

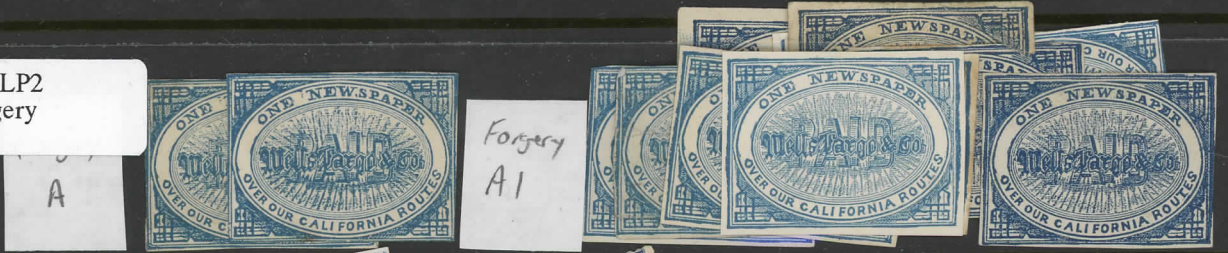
#143LP1
Genuine

#143LP1
Forgery



#143LP2
Genuine

#143LP2
Forgery



#143LP3
Genuine

Forgeries



#143LP4
Genuine



#143LP5
Genuine



#143LP5
Forgery

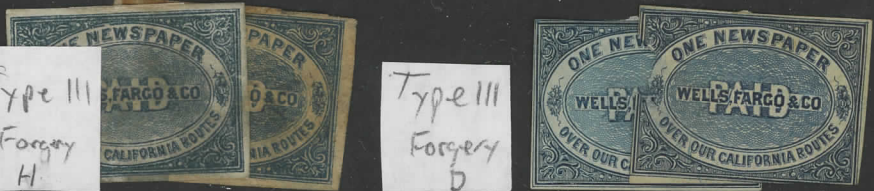
143LP5



#143LP6
Genuine

Type III
Forgery
H

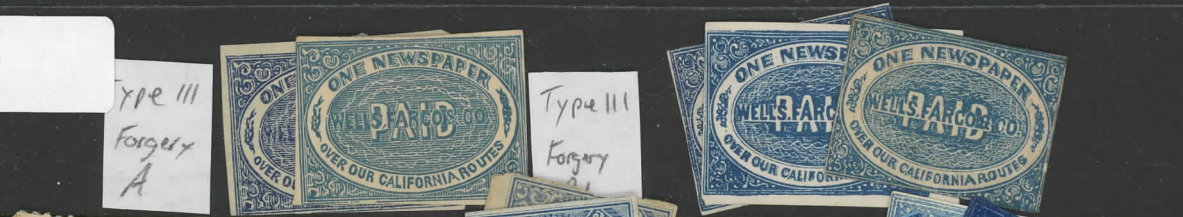
Type III
Forgery
D



#143L6
Forgery

Type III
Forgery
A

Type III
Forgery
C



#143LP7
Genuine

Type IV
143LP7

Type IV
Forgery
A



#143LP8
Genuine

Original
Type V
143LP8

Type IV
Forgery
B



#143LP9
Genuine

PUBLISHERS'
PAID STAMP
W. F. & Co's Express.

PUBLISHERS'
PAID STAMP
W. F. & Co's E

PUBLISHERS'

#143LP10
Genuine

PAID STAMP
W. F. & Co's Express.

PUBLISHERS'
PAID STAMP
W. F. & Co's Express.

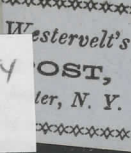
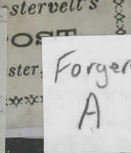
S' MP
SS. SS.

Forgery
A
Type VII

PUBLISHERS'
PAID STAMP
W. F. & Co's Express.



#144L1&2
Forgery 1



Forgery
A

#144L1&2
Forgery 2



#144L1&2
Forgery 3 B



#144L1&2
Forgery 4

#144L1&2
Forgery 5

#144L1&2
Forgery 6

#144L1&2
Forgery 7

Forgery
E



#144L1&2
Forgery 8



22
00

Forgery
A
Type III



Forgery
B



Forgery
C



Forgery
D



Forgery
E



Forgery
I



VARIO

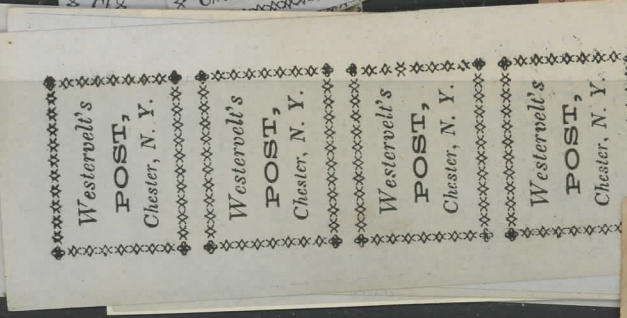
Made in Germany



Original



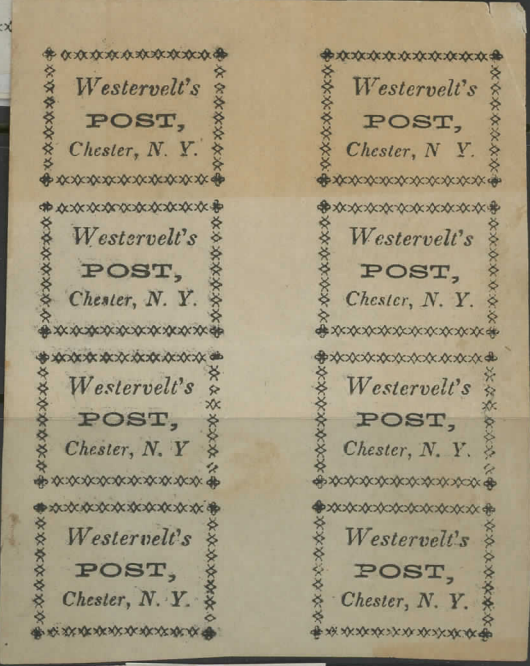
Forgery A



Forgery A Subtype a



Forgery A Subtype b



Forgery A Subtype c



Forgery A Subtype d



Forgery B



Forgery C



Forgery
D

W
I
Che
Westervelt's
POST,
Chester, N. Y.

~~ASD 1~~

Forgery
E

Westervelt's
POST,
Chester, N. Y.

Forgery
F

Westervelt's
POST,
Chester, N. Y.

Forgery
H

Westervelt's
POST,
Chester, N. Y.

unlisted

Westervelt's
POST,
Chester, N. Y.

#144L9
Forgery 1
S.A. Taylor

Originals
1



3



4



#144L9
Forgery 2
S.A. Taylor B

5



6



reprint
Type I



reprint
Type II



Reprint
Position
5



Forgery
A



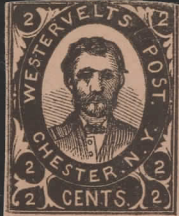
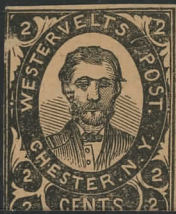
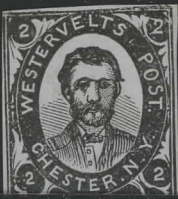
Bogus \$3.00



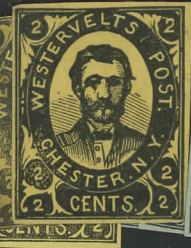
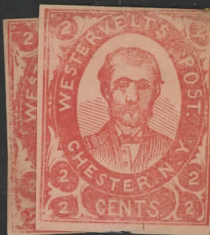
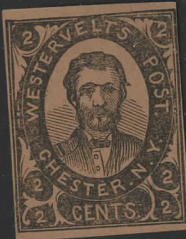
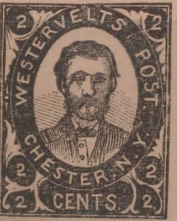
Forgery
B



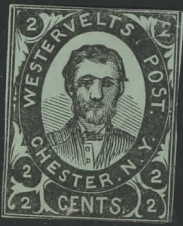
Original



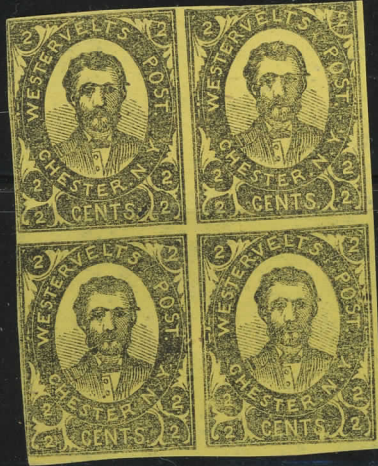
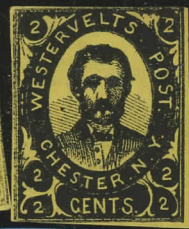
Westervelt's
POST.
Chester, N. Y.



1st
Reprint
?



2nd
Reprint



3rd
Reprint
?



Forgery
H



Original



5LB1
Genuine



Whittelsey's Express
[Chicago]

#146L1
Original



#146L1
Forgery A



#146L1
Forgery B



Fantasy



Forgery
A



Forgery
B




3





TE 271c a .85 Price _____



WASHINGTON, D.C. AMERICAN PHILATELIC SOCIETY GOLDEN JUBILEE CONVENTION WASHINGTON CITY

A rectangular stamp with a serrated top edge. The text is arranged vertically: 'WASHINGTON, D.C.' on the left, 'AMERICAN PHILATELIC SOCIETY GOLDEN JUBILEE CONVENTION' in the center, and 'WASHINGTON CITY' on the right. A circular emblem on the right side depicts a figure on horseback.





Wiley's One Cent Despatch

Forgery A1



Forgery A



#112L1 Original

Forgery B



Forgery C



Forgery C1

Forgery D



Forgery E



Forgery F

Forgery G



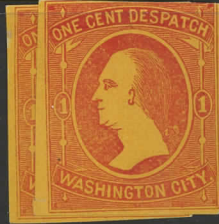
Forgery H



Forgery J [No Forgery I]

Wiley's One Cent
Despatch

S.A Taylor Fantasy





Winan's City Post
[Frajola Types}

V5/14

GROUP A
One star below wing

Type 1
Smoke at top; period after "P



SubType a
"OS" of "POST" close together; retouched bottom right corner



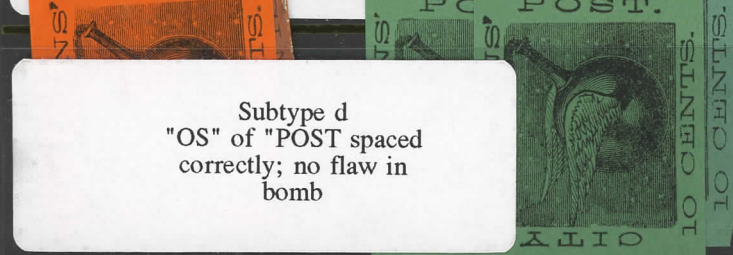
SubType b
"OS" of "POST" close together; no flaw in bomb



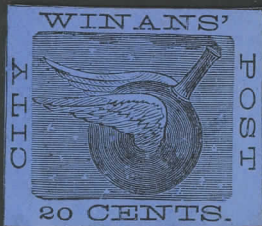
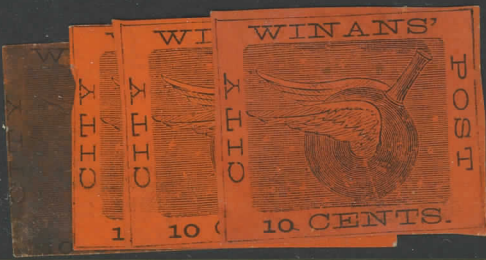
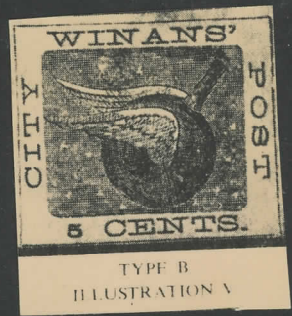
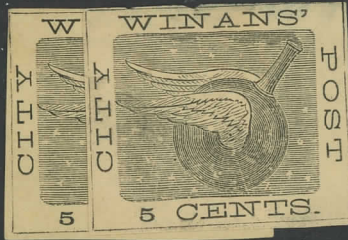
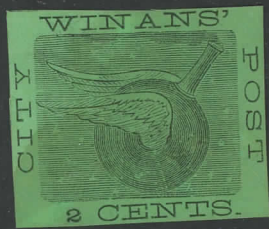
SubType c
"OS" of "POST" spaced correctly; white flaw below wing.



Subtype d
"OS" of "POST" spaced correctly; no flaw in bomb



B

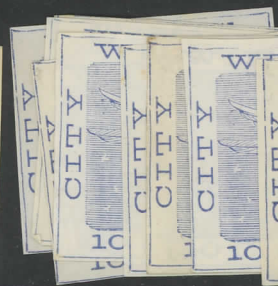
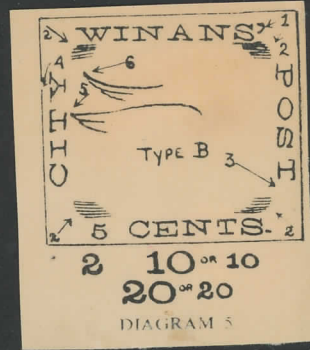


B1

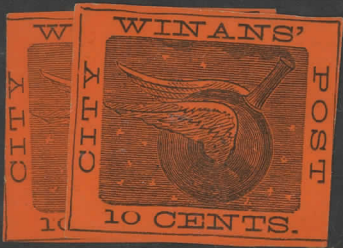
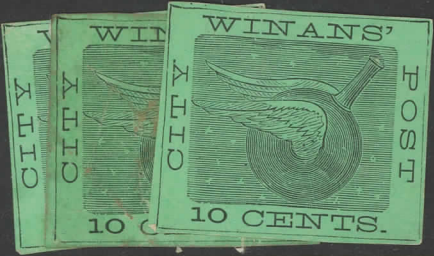
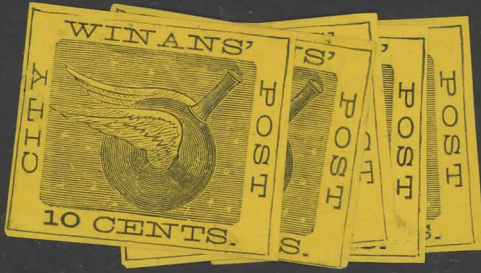
DIAGRAM 5. TYPE B

1. Apostrophe with flat top.
2. Background square has rounded corners.
3. No dash or period after "POST".
4. Break in outer frame line above "Y" of "CITY".
5. Lower wing tip opposite right lower serif of "T".
6. Upper wing tip above level of "Y".

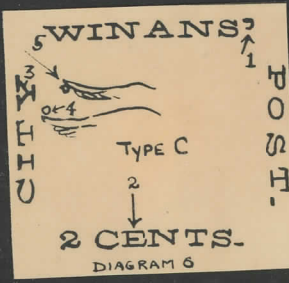
Note.—Two sizes of figures.



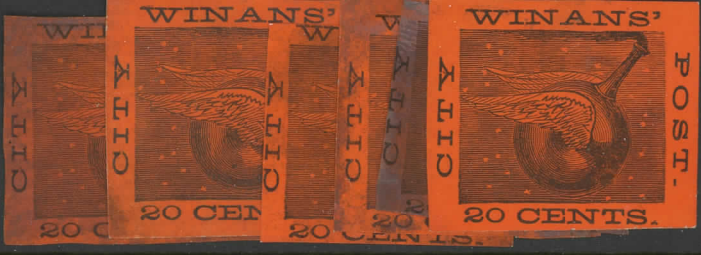
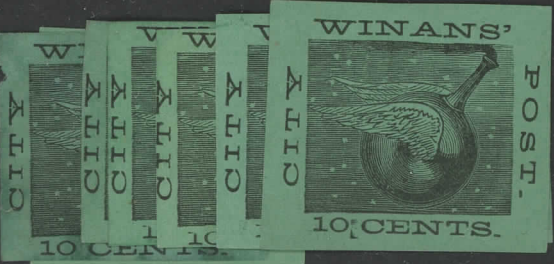
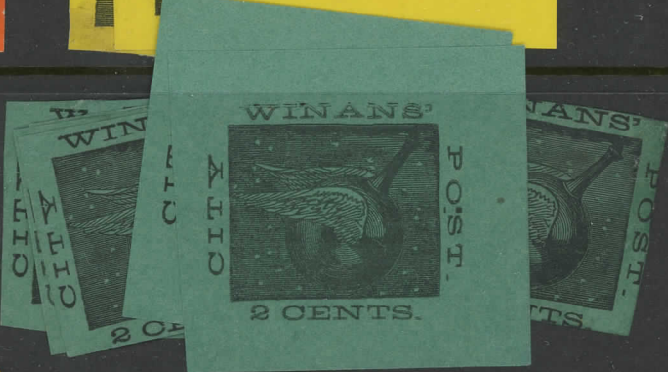
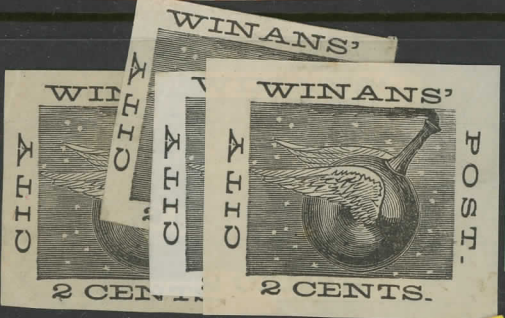
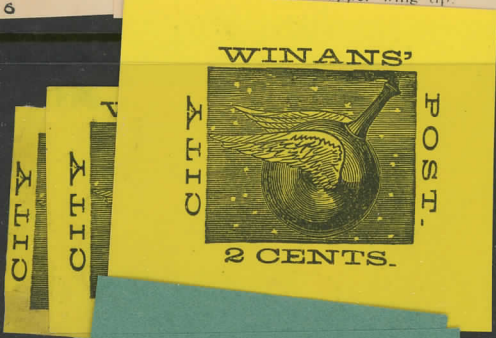
B1



C



- DIAGRAM 6. TYPE C
1. Note shape of apostrophe.
 2. No serifs to mid-stroke of "E".
 3. Black comma-shaped flaw inside upper part of "Y".
 4. One star immediately above lower wing tip.
 5. One star just below upper wing tip.



D

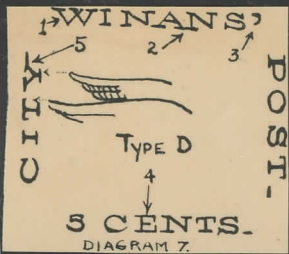
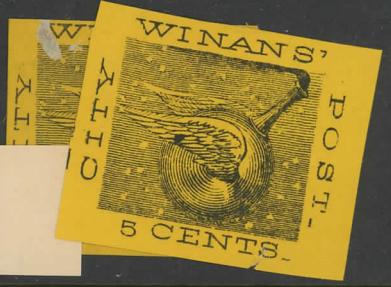


DIAGRAM 7. TYPE D

1. Centre strokes of "W" cross.
2. Foot of "AN" joined.
3. Note shape of apostrophe.
4. No serifs to mid-stroke of "E".
5. Long serif right side of "Y".



E



F

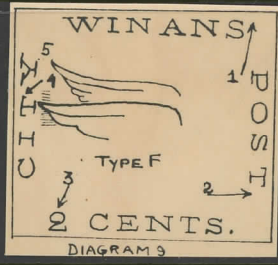
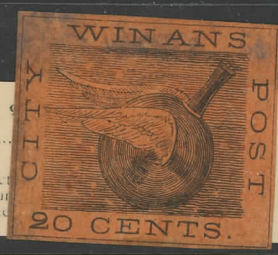


DIAGRAM 9

1. No apostrophe.
2. No period after "POST".
3. Loop of "2" closed.
4. Lower wing tip project square. Frame line round.
5. Upper wing tip opposite.



G

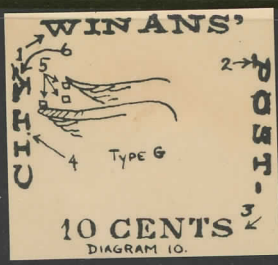
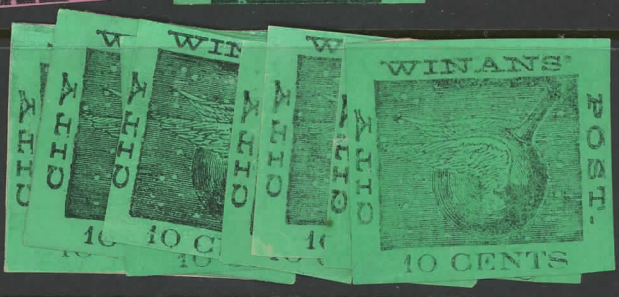


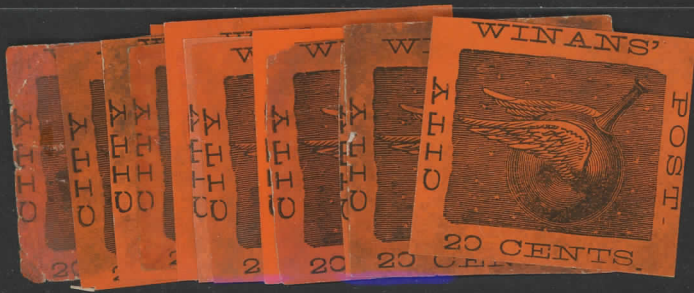
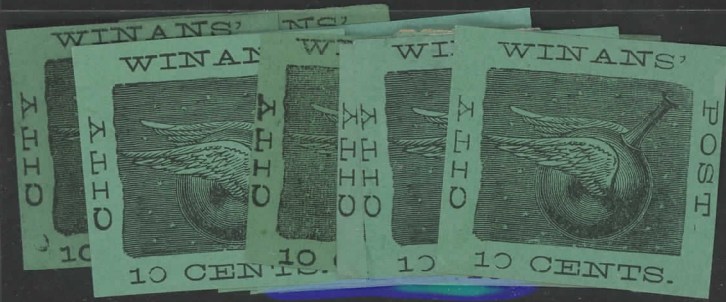
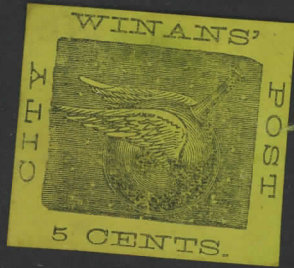
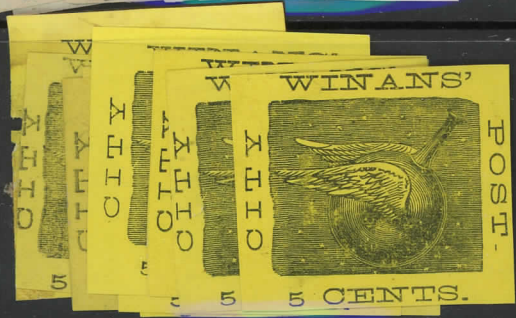
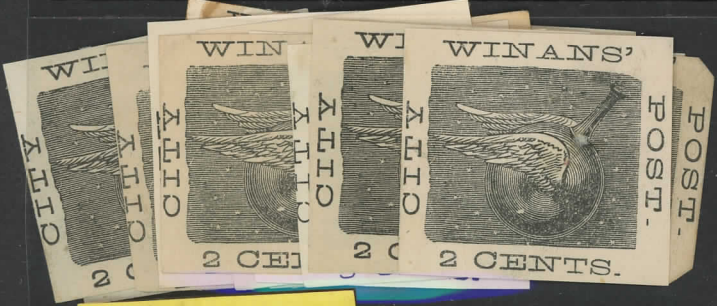
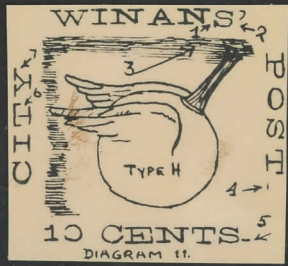
DIAGRAM 10. TYPE G

1. Serifs of "W" joined.
2. Sloping "p".
3. No period after "CENTS".
4. Lower left serif of "T" detached.
5. One star just above lower wing tip; one star just below upper wing tip; one star between.
6. Right upper serif of "Y" split.

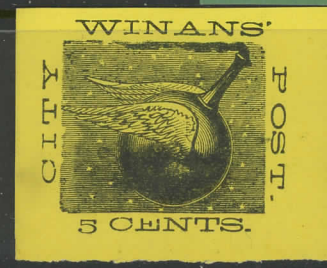
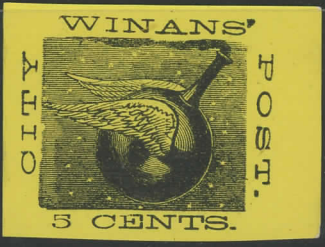
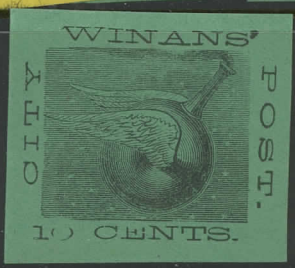
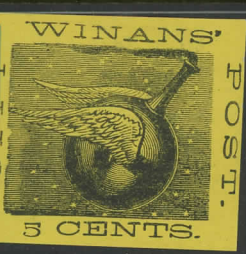
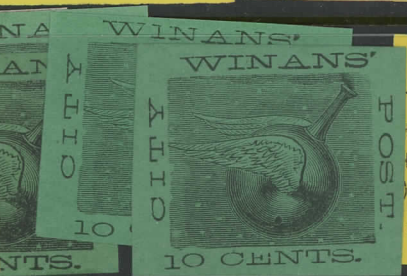
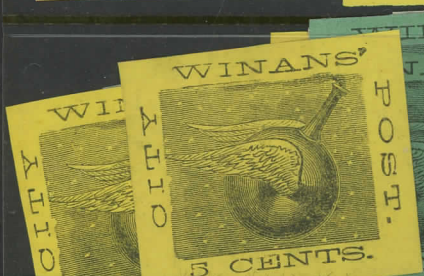
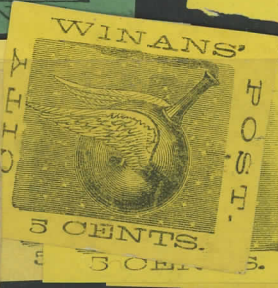
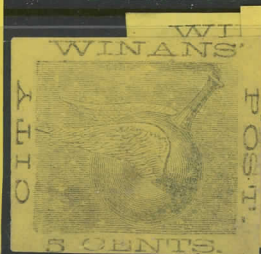
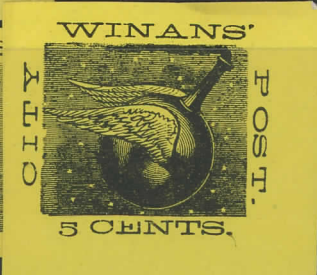
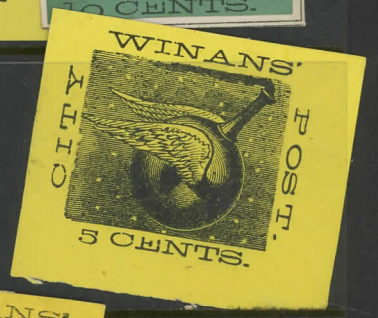
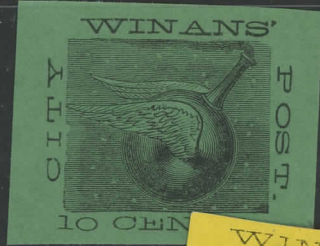
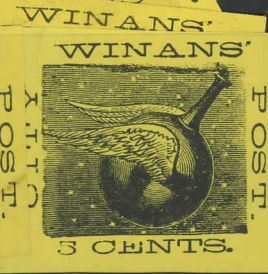


H

- DIAGRAM II. TYPE H
1. "S" slightly dropped.
 2. Thin apostrophe.
 3. No smoke.
 4. Thin stroke after "POST".
 5. Slightly thicker stroke after "CENTS".
 6. Lower wing tip opposite right lower serif of "T"; left outline of square wavy.
 7. Upper wing tip opposite right lower serif of "Y".

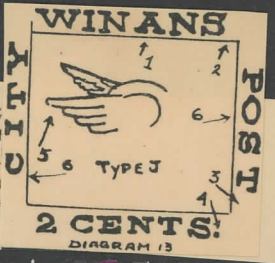


H

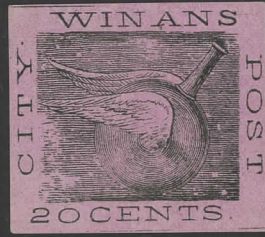
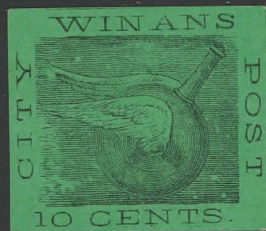
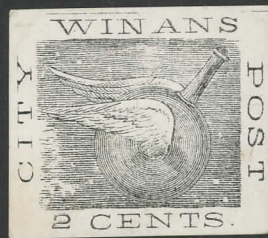


Bagus

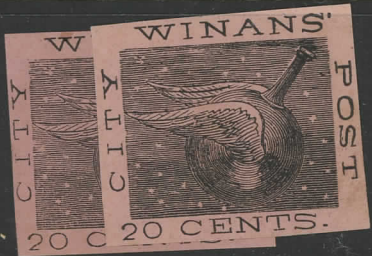
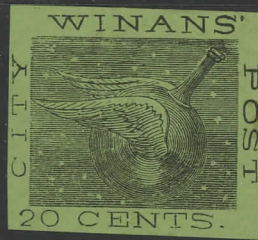
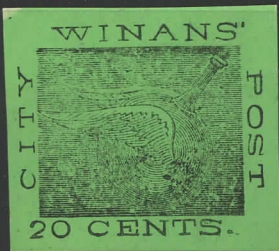
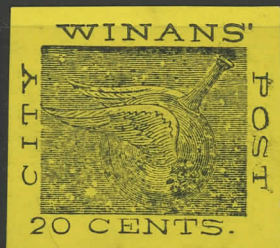
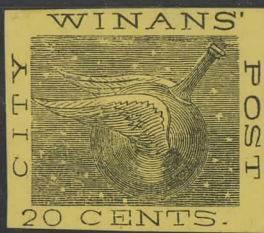
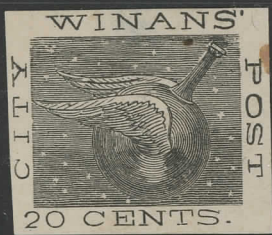
DIAG
"A" will
d after
period al
bby wing
backgro



K



L



Bogus
M

Bogus
N

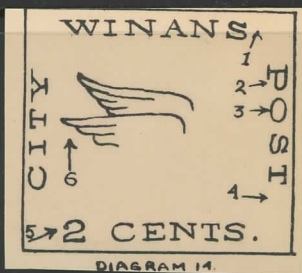
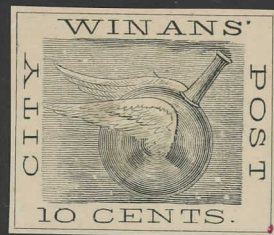
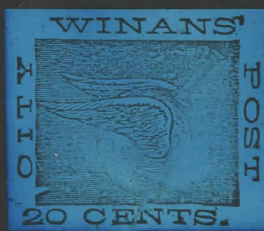
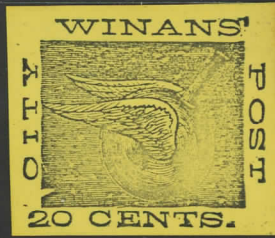
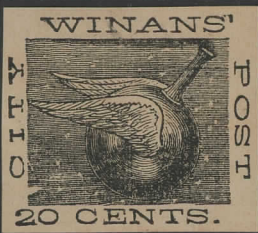


DIAGRAM 14. TYPE K

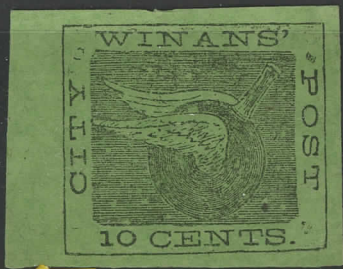
1. No apostrophe after "WINANS".
2. Loop of "P" longer than in Type F.
3. "O" more oval than in Type F.
4. ~~4.~~ Period after "POST".
5. Loop of "2" not closed.
6. Lower wing tip does not project beyond background square.



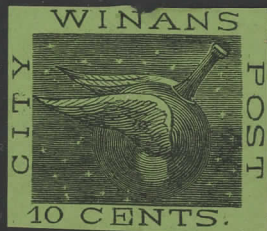
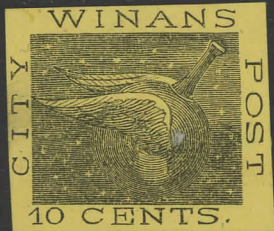
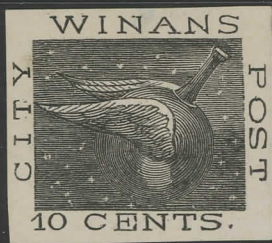
O



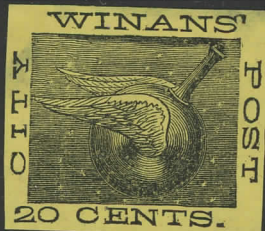
P



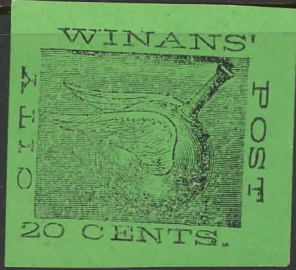
Bogus
Q



Bogus
R
unlisted



unlisted
?



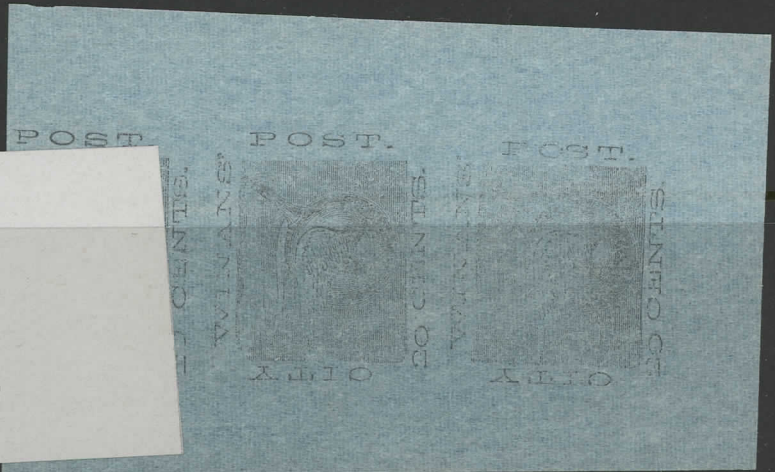
Printing
on
The Back



unlisted



unlisted

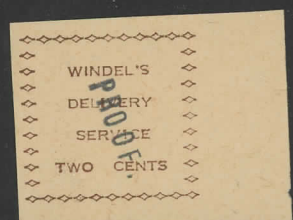
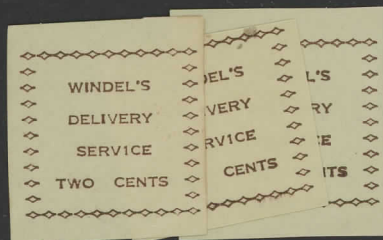
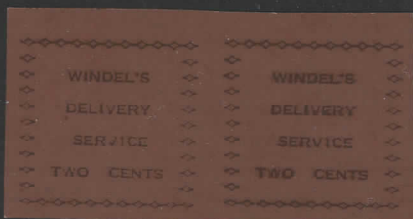
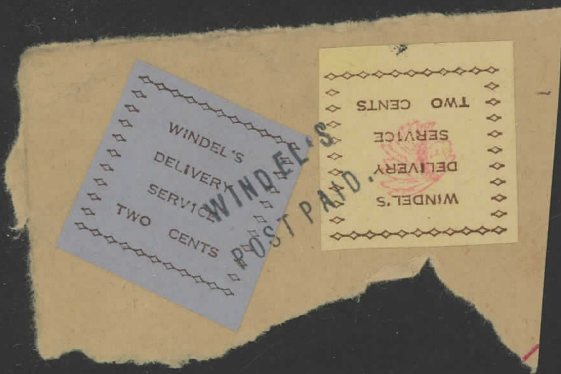
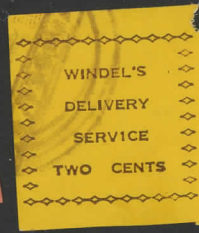
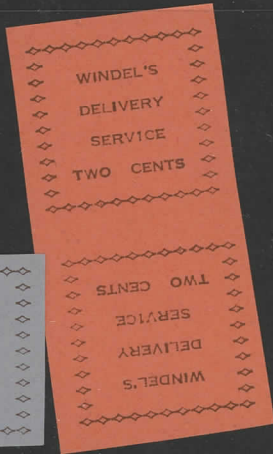


Bogus
3





Windel's
Delivery Service



Wyman's Letter Office

#149L1
Genuine

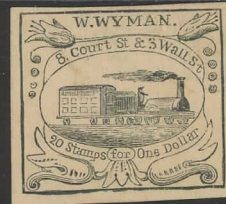
Forgery A
G. Hussey



Forgery B
Moens



Forgery C



Forgery D

Forgery E

Forgery F





150

Price