

380.10

ITALY

5871.90

1863



1863-77



1877



119.50

1879



52.50

1889



ITALY

1890



1890-91

1891-96



1896-97

1901-26



1901-26

1905

1906

1907-26



1907-26

1909-18



356.50

ITALY

8. 1912 47.50

1910



15 C
CLARET



15 C
GREEN



40.5 1911 29.5



2.25 2.25 1913 6.5



13.05 1921

19.50

1921 19.50

1922

45.50



1922-23

1923



1.70

80.5

1.35

1.30

1.35

14.50

ITALY

187-05

1923



1923

1916



1924

180-

1925



1925

1927



1926



AN OFFICIAL SCOTT ALBUM PAGE

ITALY

11520

1927-28



1928



1929



1929



1930



127.45

ITALY

1930



1931



1931

1931



1932



ITALY

1932



1932

1931



1932



171.15

ITALY

1933



1933



1934



1934

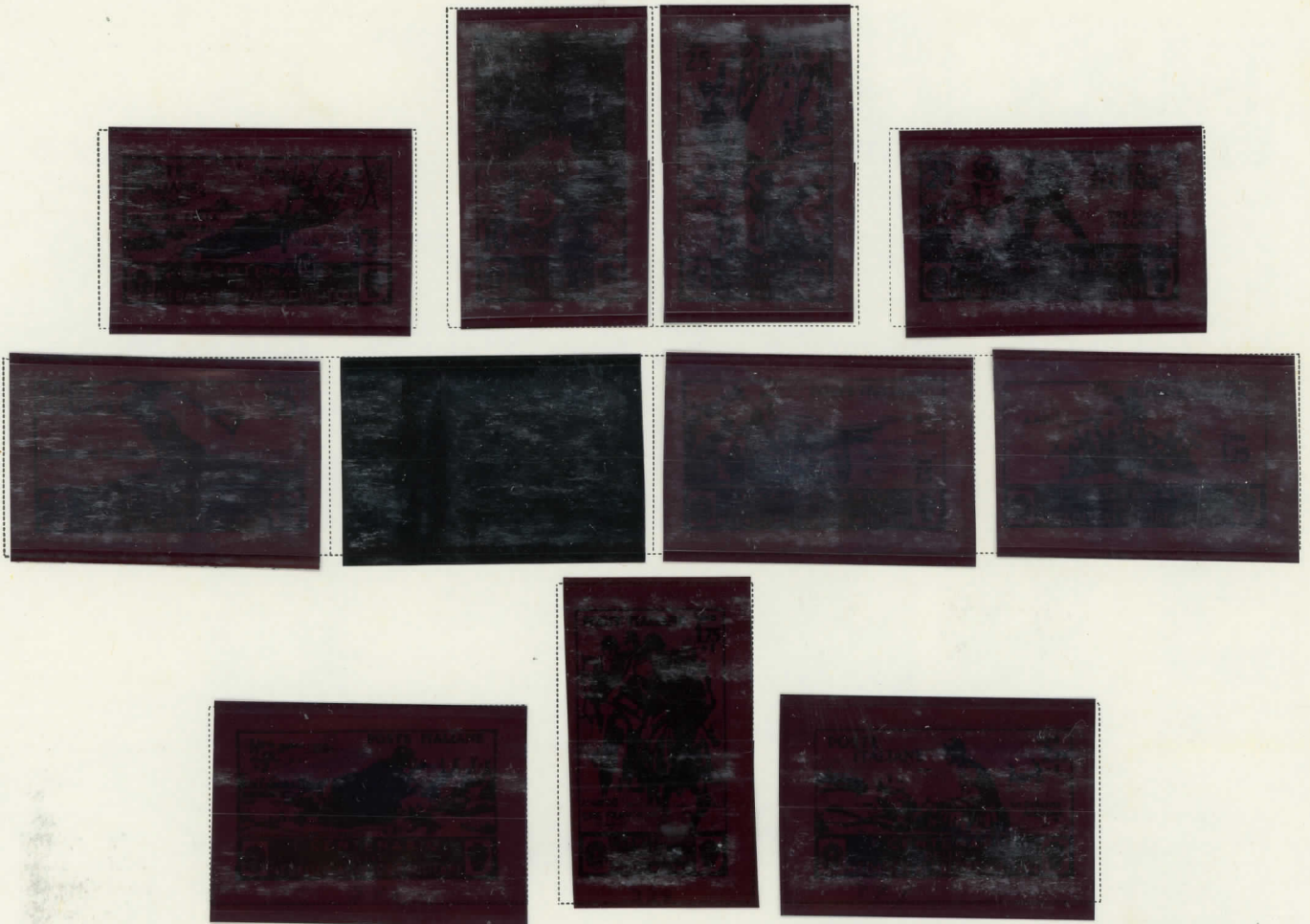


1935



ITALY

1934



1935



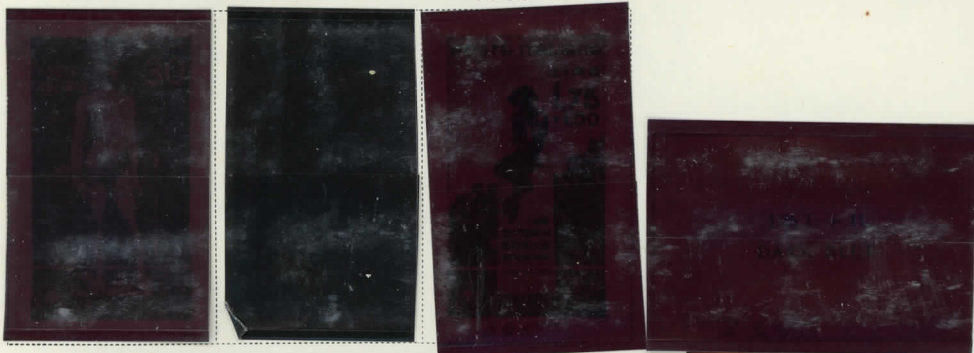
181.85

ITALY

1936



1936



1937

1938



1938



215.25

ITALY

1938



1937



1937



1939



483.20



590-38

ITALY

AIR POST STAMPS

1917



1926-27



1926-27



1927



1928



1930-32



1930-32



1930



1930



1932



403.05

ITALY

AIR POST STAMPS

1932



1932

1933



1934



127.75

ITALY

AIR POST STAMPS

1934



1935



1935



1936

1936



1937



39.40

ITALY

AIR POST STAMPS

1938



184.35

ITALY

SEMI-POSTAL STAMPS
1915-16



1924



1926-29



1935



23205

2

ITALY

SPECIAL DELIVERY STAMPS

1903

1909

1920

1922



1922-23

1932



PARCEL POST STAMPS

1914-17



1927-32



POSTAGE DUE STAMPS

1870-1903



1934



167.85

ITALY

OCCUPATION STAMPS

1918



NEWSPAPER STAMPS

1918



POSTAGE DUE STAMPS

1918

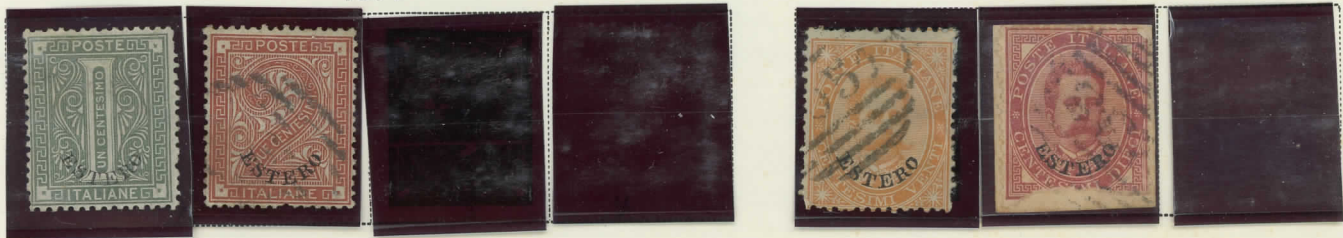


Italian Offices Abroad

GENERAL ISSUE

1874

1881



39345

ITALY

Offices in China

1918-19



1906

Offices in Crete

1907-11



SPECIAL DELIVERY STAMP

1906



311.30

Offices in Tripoli

SPECIAL DELIVERY STAMP

1910

1910



Offices in the Turkish Empire

1908-11

1922



AN OFFICIAL SCOTT ALBION PAGE

ITALY

Aegean Islands

1930



1932-38



1940



ITALY

Aegean Islands

1940



AIR POST ST

1930

1932



1940



AN OFFICIAL SCOTT AIRMAIL PAGE

ITALY

Rhodes

1929



1931



1932



AIR POST STAMPS

1934



SPECIAL DELIVERY STAMPS

1936



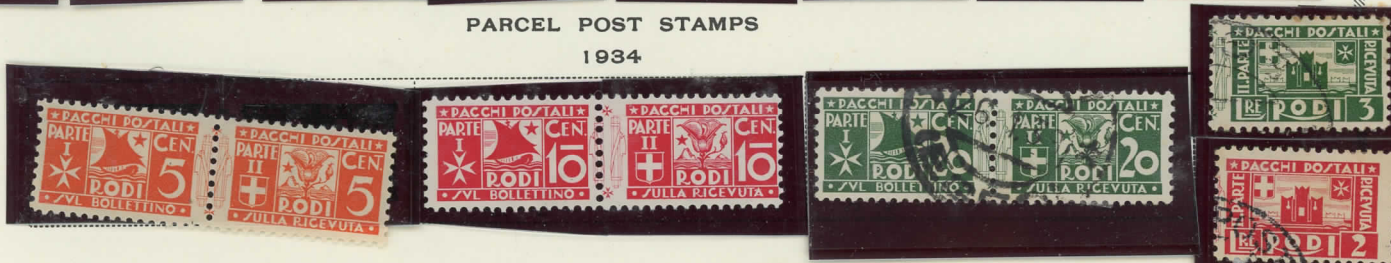
POSTAGE DUE STAMPS

1934



PARCEL POST STAMPS

1934



ITALY

OCCUPATION STAMPS

1901

Italian Stamps of 1901-32 surcharged for use in the Aegean Islands occupied by Italy:

Calchi Calino Caso Coo Lero Lisso Nisiro Patmo Piscopi Scarpanto Simi Stampalia



AN OFFICIAL S.C.I.T. ALBUM PAGE