

OPENED BY CENSOR

R BULAWAYO, (5)
S. RHODESIA
No 8054



\$1.00
Lea

Mess. Atlas Scarp. Lea.
Go through Post office that
Frankfurter St.
Zurich Postfach Leucon

WW2. 1940 Southern Rhodesia registered cover to Switzerland. Southern Rhodesia censor tape.

Ty II SC-8 60-



BATHURST to LEOPOLDVILLE



VIA AIR MAIL

PASSED by CENSOR
BATHURST.

Edwin C. Silvers,
16 So. Suffolk Pl.,
Ventnor City,
New Jersey.

WW2. 1941 Gambia via Leopoldville to US. Gambia censor stamp. Ty II, SC 7

100-

N. V. Twentsche Overzee Handel Maatschappij

(TWENTSCHE OVERSEAS TRADING Co. LTD.,) (T. O. M.)

DAR ES SALAAM.

P. O. Box 44.

OPENED BY CENSOR
P.C. 9



TJ 111b
SC 7
TANGANYIKA

Messrs. Chrysler Corporation,
Export Division,
Detroit,
Michigan,
U. S. A.

TANGANYIKA COFFEE GROWERS' ASSOCIATION.

P. O. Box 102.
MOSHI, T. T.

OPENED BY EXAMINER



90 -

TJ 111b
SC 7
TANGANYIKA

Messrs. Tea & Coffee Trade Journal,

79, Wall Street,

NEW YORK.

P.C. 90

Handwritten mark

10/28/41 MAKURDI,
NIGERIA, TO USA,
CENSORED

Two

\$38.00



The Rev. Regis C. Guthrie, C.S.Sp.,
Holy Ghost Fathers,
1615 Manchester Lane, N.W.,
Washington, D.C.

J.S.A.



W.T. PETTIJOHN

NORTHERN RHODESIA



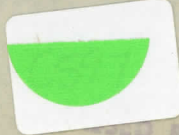
J. A. Thomas, Manager,
The Mutual Life Insurance Co. of New York,
P. O. Box 350,

WW2. 1942 cover Northern Rhodesia to US. Northern
Rhodesia censor tape and hand stamp.

Ty 14, 57

Ty 11A, 55

\$60-

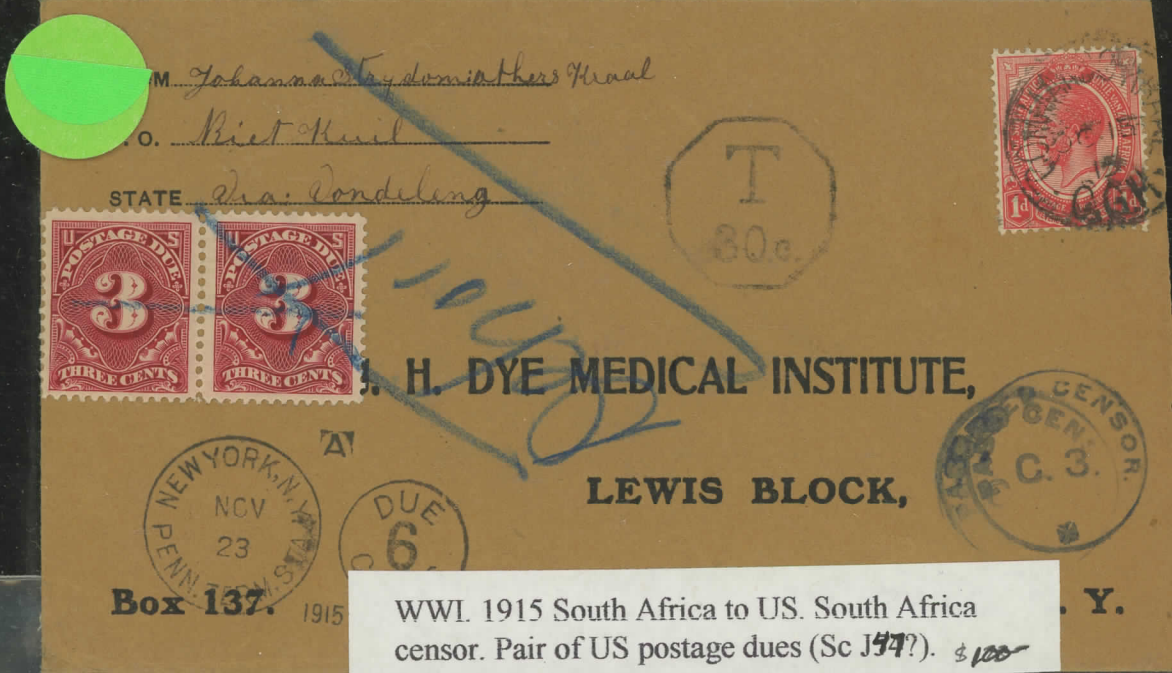


BY CENSOR
MOMBASA

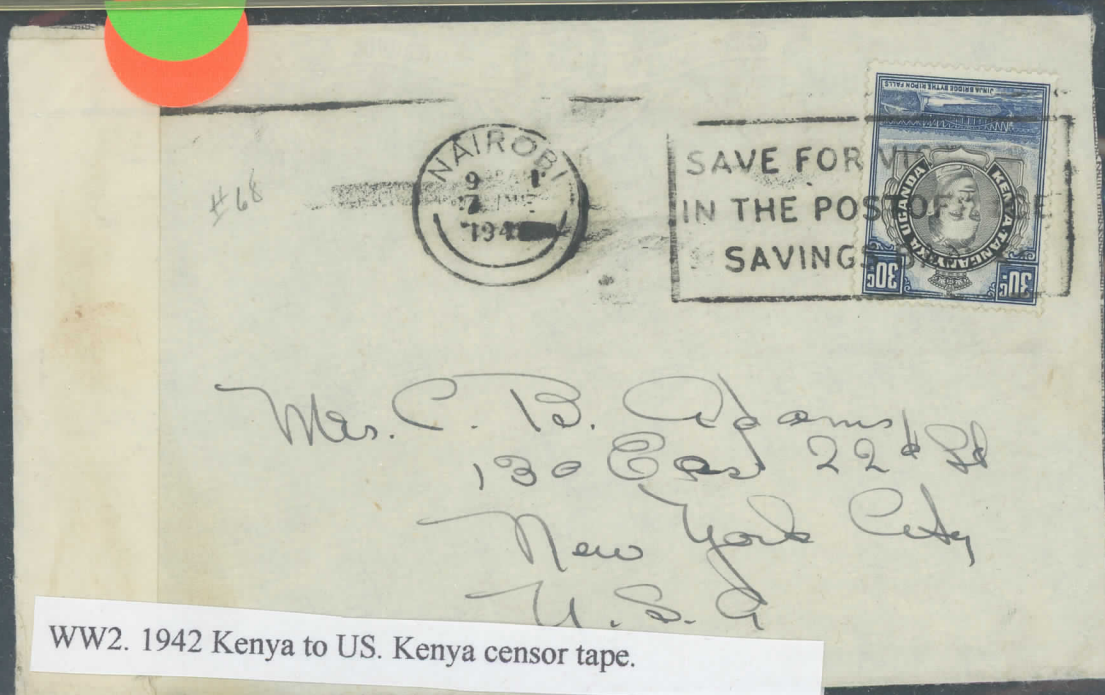


John F. Macdonald, Esq.
1461 - 10th Avenue.
San Diego.
California, U. S. America.

11/30/40, Port Harcourt, Nigeria, to USA, Censored \$20-
500



WW1. 1915 South Africa to US. South Africa censor. Pair of US postage dues (Sc J47?). \$100



WW2. 1942 Kenya to US. Kenya censor tape.

AIRMAIL

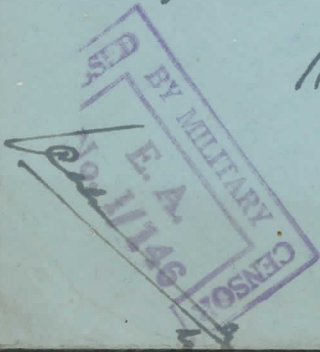


Mr. G. Madhokari.

c/o Messrs. Rodin Datto.

11. St. James Place.

London.



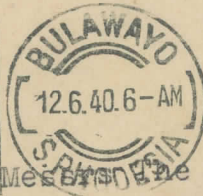
EAST AFRICA CENSORON
COU DR - 1944.
TANGANYIKA, KENYA, UGANDA

CTA

\$25.00

RECEIVED BY CENSOR

Kimpton's
RHODESIAN
TEA



DRINK
RHODESIAN
TEA



Messrs. The Chrysler Corporation, Rhodesia

Export Dept ,
Detroit,
Michigan.
U S A .

for
Kars.

Delivered in 10 days return to Kimpton's (Byo.) Ltd., Box 109, Bulawayo.

WW2. 1940 Southern Rhodesia to US. Southern Rhodesia censor tape.

TY 10, SC 8

100-

00/239

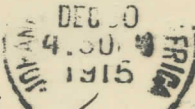
W. 819/5,000/5.44



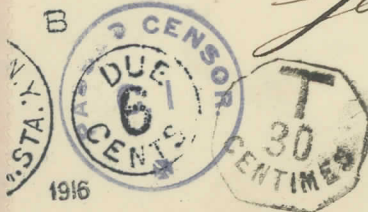
Sam Schatzman, Esquire,
1377 Park Pl.,
Brooklyn, 13

WW2. 1944 Gold Coast to US with Gold Coast censor tape (OO = Gold Coast). TYB, SC 6, EPD SF6345 275¹⁰

A.



S. Whitehead Co.
General Auditor
General Electric Co.
Schenectady
New York
U.S.A.

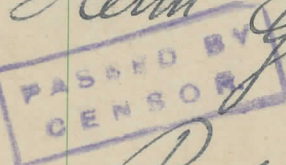


WWI - SOUTHWEST AFRICA
CAPTURED BY S. AFRICA
INTERNAL MAIL 1918
CENSORED \$50²

POST CARD POSTKAART



For address only.
Slechts voor 't adres.



Herrn Götting
Bethanien

WWI SOUTH AFRICA
To HOLLAND. SA CENSOR
825

RD



363 - Published by A. Ritzenberg, Durban.

Lieve Zusen,
Hierby een plaasje
van de West-Indië. Dit
is een der voornaamste
en de beste wegen van
de Indische. De slaaf zelf
is niet erg gerechtig, avahl
omstrekten zijn prachtig.
Zustien hebben wij bij een
ong familie op een verrekke-
licht land goed thee gevon-
den, welke lieve menschen
s. want zij we naar de
bioscoop gegaan en hebben
een heel mooie film sien
afgehaald. Bij 6d. Bag,
Zusterlye. Een tin
Jaap

The Address only to be written here.

Miss Mary Hall
Hendrikstr. 60
The Hague
Holland



WWI CEYLON
CENSOR TAPE (160 pts)
COLOMBO CENSOR (150 pts)

SCARCE PER
ENTWISTLE. \$80⁰⁰

OPENED BY THE CENSOR



Messrs. The Wagner Leather Co.,
3215 Stockton,
United States of America, Cal.
16 DEC 1915
COLOMBO



July 16
Sept 7



Mrs. F. C. Lyman
125 Garfield St.
Springfield

D.E.

WW2. Southern Rhodesia to US. Southern Rhodesia censor tape and hand stamp. (DE = Southern Rhodesia). TY VA H/S, SC 1 / TAPE TY II A, SC 8 \$75-

OPENED BY CENSOR



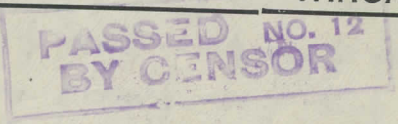
Leonard Nilsson Esq,
P.O. Box 1066,
Minneapolis,
Minnesota.
U.S.A.



INTERNATIONAL MOTOR MART.

P. O. Box 109.

TANGA.

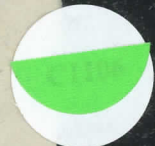


AIRMAIL.

International Harvester Export Co.,

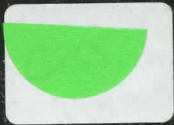
Harvester Building,

CHICAGO.



25⁰⁰

75^{2b}



E. Pozia
Jamaica via Seyashu
Sierra Leone
Africa

PASSED BY CENSOR. 5.



H. LTD.

Mrs. Herbert N. Miller
R. D. #1
Troy, Ohio
U. S. America

150-
Schmitt 8

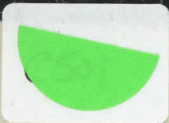
OPENED BY EXAMINER



Messrs. Haseltine, Lake & Co.,
Berkeley Building,
19-25 West 44th Street,
NEW YORK, N.Y.

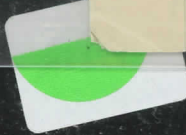


برای رسیدن زینت
 حضرت امیر متولی افغانستان
 بیرون کابل
 Private

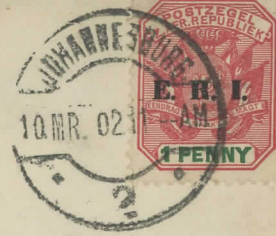


Miss Alice Lichel
 83 Woodruff Ave
 Brooklyn / N.Y.

OPENED BY CENSOR

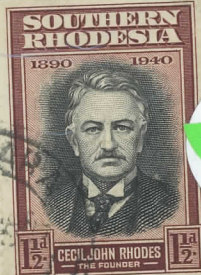
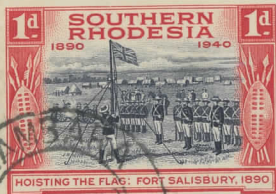


Private
 from Lieut Thompson
 O.A.S. Africa.



A. Entwistle Esq.
 Superintendent
 Ld. N. W. Rly.
 Euston Station
 London





Mrs. Anne Ramsay &
Mrs. Harold Ramsay
East Helena
Montana, U. S. A.

PASSED BY CENSOR



OPENED BY EXAMINER

J. 60442—H. 6182—D. 9413—112,000L.—S. 12.42.

P.C.90.

As Mr. T. R. Williamson
2718 Ococa Street
Cleveland Tennessee
U. S. A.

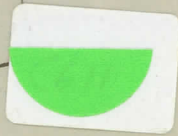
WW2. Southern Rhodesia to US. Southern Rhodesia censor
tape. TAPE Ty Hda, SC=8 \$/20.-

WW2. Sudan to US. Sudan censor tape (MM=Sudan).
J.V.I. S. 4

OPENED BY EXAMINER

MM / 6768

S.S.M.
Khartoum
Sudan. Africa



Miss Ellen Fosberg
Paulsbo
Washington
United States of America

WW2. 1945 cover Sudan to US soldier, first at APO 616
(then Camp Huckstep, Egypt) but forwarded to APO 763
(Italy). On reverse, unreadable British FPO cancels. Sudan
censor tape (MM=Sudan) J.V.I. S. 4

MM / 8230

Ida Yekmahian
P.O. Box 19
Khartoum Sudan



Sgt. Charles Stemen - 20519152
A.P.O. - 616 c/o Postmaster
N.Y. U.S. Army

7.25

APU 7638

OPENED BY EXAMINER



Twentsche Overzee Handel, Maatschappij

(TWENTSCHE OVERSEAS TRADING CO. LTD.) (T.O.M.)

DAR ES SALAAM.

P. O. Box 44.



Messrs. Crysler Corporation,
Export Division,
Detroit,
Michigan,
U. S. A.

P.C. 90

265.67



*S. Lomnitz Esq,
C/o Messrs Liebenfeldts
Hopetown
C.C.*

275

O.R.C.
#44j & 44jn IN
PAIR ON COVER
KROONSTAD TO
C.G.H. 1900.
"PASSED CENSOR"
IN VIOLET ON THE
STAMPS - MOST
UNUSUAL. "MARTIAL
LAW" CENSOR STRIP
ON REVERSE.

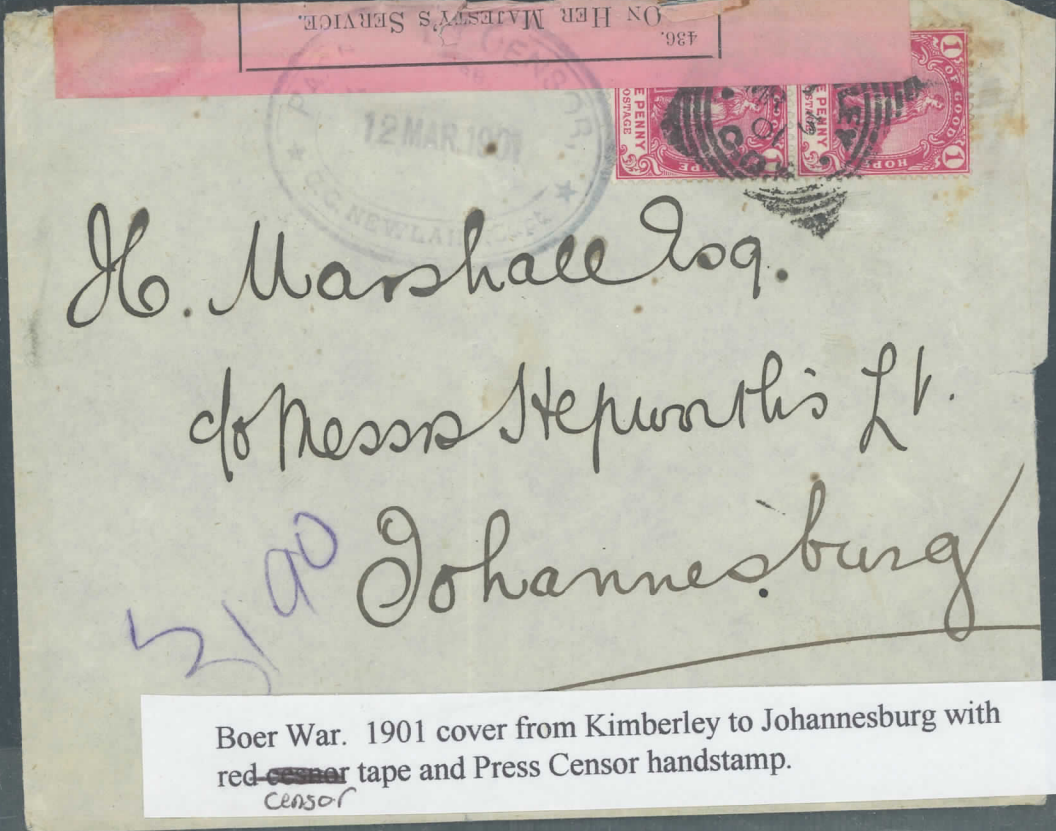
P.B.C.
UNION POSTALE UNIVERSELLE.
POST CARD.

THE ADDRESS ONLY TO BE WRITTEN THIS SIDE.



*Master Alistair H. D. Simpson.
Comely Bank
Perth.
Scotland.*

45-



Boer War. 1901 cover from Kimberley to Johannesburg with red censor tape and Press Censor handstamp.



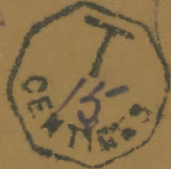
WWI. 1915 South Africa to US. South Africa censor. Pair of US postage dues (Sc J47) \$100-



FROM Mrs J W Blignaut
 P. O. Drip Kloof, Ryferkuil
 STATE Blerksdorp, Trans Vaal



POSTAGE DUE COLLECTED



DR. J. H. DYE MEDICAL INSTITUTE,

LEWIS BLO



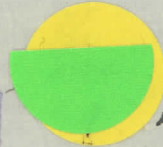
BUFFALO, N. Y.



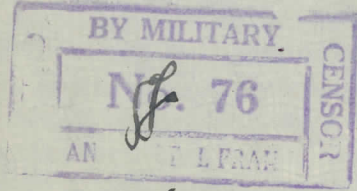
WWI. 1915 South Africa to US. South Africa
 censorship. Pair of US postage dues (Sc. J67?) \$100-



on Aetui Sou



by Dorothy Hope Morley
 7 Princes Gate
 London. S.W.



Smyland

35-



Prisoners letters

Mr J. L. Durant -
 Prisoner of war
 Green Point
 C. Colony



\$100⁰⁰ 9

Harvey Boda,
enda, P.O. Ruiru,
nya, E. Africa.



Via South Africa



Rev. Joseph M. Stowell,
622 Utica St.,
Ithaca, N. Y.,
U. S. America.

WW2. 1941 Kenya to US. Kenya censor tape (Little Type IIA but unlisted censor no. X32), SC 4 SD-

OPENED BY CENSOR



U . S . A .

*123 W Isabel
St Paul, Minn*



To
The Sodality of St. Peter Claver,
3624 West Pine Blvd.
St. Louis, Mo.

U . S . A .

P.C. 1

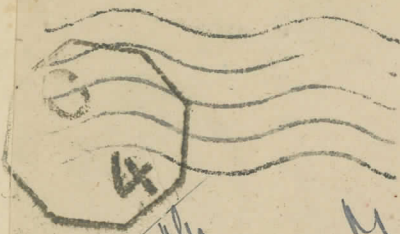
CENSOR. I.



The Rosicrucian Fellowship
Mt. Ecclesia
Oceanside
California
S. A.

WW2. 1941 Sierra Leone to US. Sierra Leone censor tape and stamp. HS: TY 3, SC 1, TAPE TY II, SC 7. 35-

OPENED BY



6 NOV 44



Manager
Maritime Bank of
India Ltd
Bombay

WW2. 1944 Ceylon to India. Ceylon censor tape (L=Ceylon) and Indian "Not Opened by Censor" octagonal mark of Bombay. Ty 782, SC 7. 100-

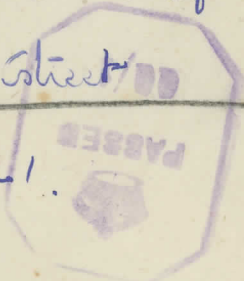
sc

PAR AVION
BY AIR MAIL



to A. Lodge and Company Ltd.
17, Whitehall Street
Manchester.

R FREETOWN
NO. 0340



OPENED BY CENSO

Wm

Else Chen
Red Cedar Farm

Lagrangeville

N.Y.

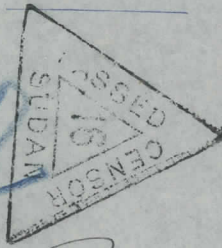
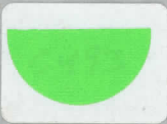


Mrs. Virgil F. Donaherty
American Mission
Nasir, Sudan.

SUDAN RAILWAY

KHARTOUM - - - GRAND HOTEL.
WADI HALFA - - - NILE HOTEL.
PORT SUDAN - - - RED SEA HOTEL.
JUBA - - - - - JUBA HOTEL.

Telegraphic Address:
"LUKANDA."

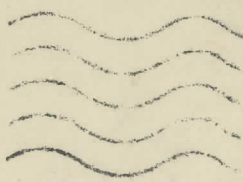
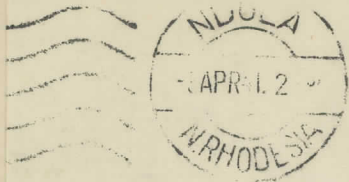


Toppench

Mrs. Fred Russell,
Grandview
Washington,
U. S. A.

100/00
1/10

NORTHERN RHODESIA.
Examined by



Mrs. Smith Kirkpatrick Inc.,
65 Broadway
NEW YORK
U.S.A.



187

CITY OF DURBAN

12 X 44 - 8:30

12 X 44 - 8:30



The Cinaudagraph Speakers Inc.
3911. S. Michigan Avenue.
CHICAGO.

PASSED BY CENSOR
DEUR DIE SENSOR GOEDKEUR

MUNICIPAL ENTERTAINMENTS DEPT.

G.P.S.
DEUR
U.C. 8.
(Groen.)
OPENED
U.C. 8.
(Lange)

ANNESBURG
144-17:30
C

SPANDEER WINDER
SPAAR MEER

JOHANNESBURG
21.14-17:30
C



Mrs G. C. Styles
445. Strathfield Road
Bridgeport
Conn
U. S. America

5456

U.C. 8.
(Klein)
UNIE VAN SUID-AFRIKA.
U.C. 8.
(Small)
UNION OF SOUTH AFRICA.

DU...
-4.XII.47.-13:10
DPT. P. 2
LOCKHEED AIRCRAFT CORPORATION,
BURBANK,
CALIFORNIA,
U.S.A.



THE AMERICAN FORK & HOE COMPANY
EXPORT OFFICE,
105, DUANE STREET
NEW YORK. U.S.A.



OPENED BY GENSOK



THE WORLD RADIO UNIVERSITY,
(STATIONS W.R.U.W. & W.R.U.L.)
BOSTON,
Mass.,
U.S.A.