

11/37  
116 (shades)  
↓  
↓

10/40  
116

10/46  
Reprint  
116

5/41 like  
L.P. - pen  
116a

10/41  
(2nd)  
116b

19/41  
14th  
116b



3/43 116c

deepest frame  
3/44  
116c

6/45  
116c

12/46  
(Two papers)  
116c s.p.  
8BK.

7/47  
116c

2/48  
(aniline)  
116c  
(BK 11f)



← p. 13 →  
12/49 116c  
8/50 116e  
2/52 116e



Ordinary Paper unless otherwise specified  
Original issue has head die with broken  
Shading lines across cheekbone

KGVI 2/6  
Varieties

A-D Dates of Arrival in Colony  
F-O Crown Agents Release - London  
• Exists with flaw - Stamps #59, 60

Comb Perf.  $14 \times 13\frac{3}{4}$   
CW12



Desp. 27 Nov / 30 Dec 1937

A Black & Red on Greyish blue } 20 Jan 1938  
Chalky paper }  
Original head die } Printed Autumn 1937  
Brownish gum }  
A<sub>1</sub> Black & Darker red on Greyish blue } 20 Jan 1938  
Chalky paper }  
Original head die }  
Brownish gum }  
A<sub>2</sub> Deeper black & Light red on Greyish blue } 20 Jan 1938  
Chalky paper }  
Original head die }  
Brownish gum }



A<sub>1</sub> Black & Lighter red on Greyish blue } 20 Jan 1938  
Chalky paper }  
Original head die }  
Clear gum }  
A<sub>2</sub> Deeper black & Light red on Greyish blue } 20 Jan 1938  
Chalky paper }  
Original head die }  
Clear gum }  
A<sub>3</sub> Black & Lighter red on Greyish blue } 20 Jan 1938  
Chalky paper }  
Original head die }  
Clear gum }

151



B Black & Red on Greyish blue } 1939 ?  
Chalky paper }  
New head die }  
Brownish gum }  
B<sub>1</sub> Intense black & Red on Light greyish blue }  
Chalky paper ? }  
New head die }  
Brownish gum }  
B<sub>2</sub> Black & Vermilion-Red on Greyish blue }  
New head die }  
Desp OCT 40 }  
Line Perf  $14\frac{1}{2}$  }  
CW18 }  
Comb Perf  $14 \times 13\frac{3}{4}$  }  
CW12a }



C Black & Red on Greyer blue } Oct 1940  
Chalky paper }  
New head die }  
Printed Sept 1940 }  
D. 16 May 41 }  
D Black & Bright red on Pale blue } June 1941  
Original head die }  
Clear gum }  
Printed May 1941 }  
Desp DEC 41 }



F Intense black & Light Red on Pale blue } Mar 1943  
New head die }  
Printed Jan 1943 }  
Desp? Mar 43 }  
5TH }  
F Intense black & Lighter Red on Pale blue } Mar 1943  
New head die }  
I Black & Dull red on Pale blue } 11 Dec 1946  
6TH }  
Desp. 13 DEC 1946 }  
K Black & Red on Pale blue } 21 July 1948  
brownish }  
7TH }  
Desp 24 JUN 48 }

Comb. Perf.  $13\frac{1}{2} \times 13$   
C.W. 22

CW22a



M Black & Vermilion on Pale blue } 10 Oct 1950  
8TH }  
Desp 18+24 AUG 1950 }  
N Grey black & Vermilion on Pale blue } 11 Jan 1952  
9TH }  
Desp. Nov 51 }  
O Black & Dull Carmine Red on Pale blue } 18 June 1952  
10TH }  
Desp. 9 APR 1952 }  
O<sub>1</sub> Deeper black & Dull Carmine red on Pale blue } 18 June 1952



118

11/31

118a

1/39

L.P. 118b

5/41

118c (v. scarce) WONG  
11/41 ✓

118d

3/43 (flying piece)

118e

3/44



118e  
Headplate ~~118d~~  
shade can vary.  
12/46  
↓  
FRANKLISTED  
6/48  
118e



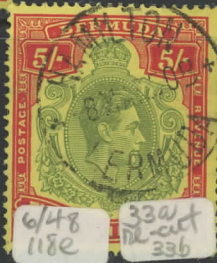
118f  
12/49 (C)



R5D 118a



118g  
4/52 (C) ✓  
29a,b





11/37  
120

7.8/38  
120a  
(die 1)

7/39  
120b

10/40  
#41 (scarce)  
120b

3/43  
(ord.)  
120c  
#33a

6/46  
Lemon (ord.)  
120d  
#24b (#24c?)



12/46  
(ord.)  
120c

6/48  
120b  
#16a C.  
#16b overinked?



DK-bnn, DK-brn; yd-bm; H-bm, dkbrn, brn, Brn  
(red-brn), " Blue-brn - (violet)  
Bnn, Brn-brn, Brn-brn, golden-brn  
(violet)

8/50  
120e

6/51  
120e  
(v. scarce relative to other P.13)

9/52  
120e (all P.13)





119 11/37      119a 1/39      L.P. 9/41 119b      11/41 ↑ Little known 3/43      119c 11/44      (Emerald back) 119d 12/46



P.13 119e 6/51      119f 1/53

11/37 121      BK 16aa ↑ 7/41 121a      3/43 121b      6/45 121b      12/46 121b



unreported  
Hawthorn (1a)  
Post Pearl  
→ Δ overnight

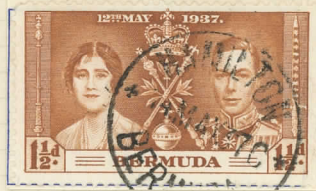


P.13 11/51 121c      16aa, c 10/52 121d  
"Hawthorn" x 2 PM 205/51  
@ 16aa) Δ (4/52) 121c



# BERMUDA

1937. (14 May). Wmk. Mult. Script CA. Perforation 14.  
Recess. De La Rue & Co.



108

109

1938. (20 Jan). Wmk. Mult. Script CA. Perf. 12.  
Recess. Bradbury, Wilkinson & Co.



110 + 110 a



113



114



113 v



114 v



111 v



112 v



30 D. 1

112



112



115 v

1938. (20 Jan). Wmk. Mult. Script CA. Perf. 14.  
Typo. De La Rue & Co.



# BERMUDA

1940. Wmk. Mult. Script CA. Perf.12.  
Recess. Bradbury, Wilkinson & Co.



112a ✓



122 ✓



122



122

1941. Wmk. Mult. Script CA. Perf.12.  
Recess. Bradbury, Wilkinson & Co.



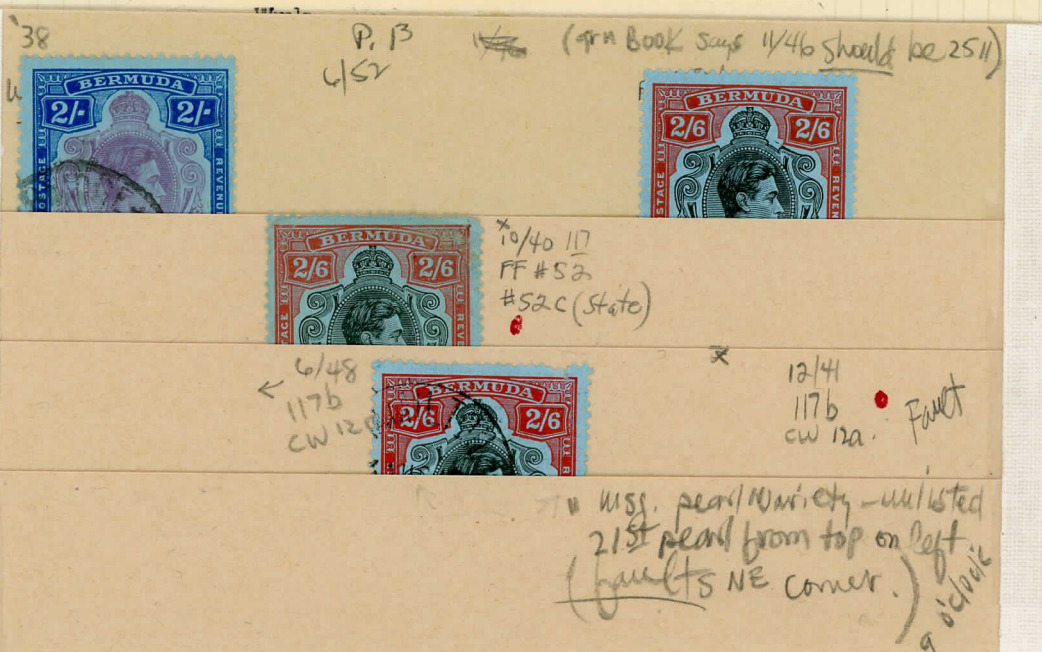
113a ✓



114b ✓



114a ✓



12/6

116a ✓

Mottled paper. 0

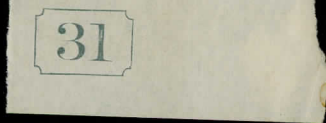
501-

119a

12/6

121a ✓





















VARICO

Made in Germany









VARIO

Made in Germany





BRADBURY, WILKINSON & CO. LD. ENGINEERS, NEW MALDEN, SURREY, ENGLAND.





VANHO

Made in Germany





LABBURY, WILKINSON & CO L<sup>ts</sup> ENGRAVERS, NEW MALDEN, SURREY, ENGLAND

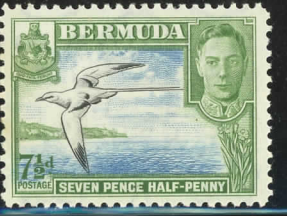
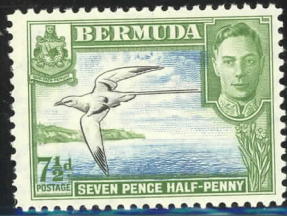


LABBURY, WILKINSON & CO L<sup>ts</sup> ENGRAVERS, NEW MALDEN, SURREY, ENGLAND



LABBURY, WILKINSON & CO L<sup>ts</sup> ENGRAVERS, NEW MALDEN, SURREY, ENGLAND





VARIC

Made in Germany





SG 2w  
inverted  
wtmk  
£300



SG 3w  
inverted  
wtmk  
£750  
small thin



SG 8w  
inverted  
wtmk  
£350



SG 28ax  
wtmk  
reversed  
mint  
£500







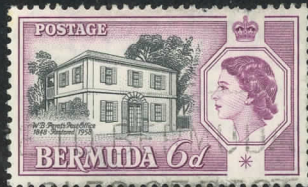




VARIO

Made in Germany







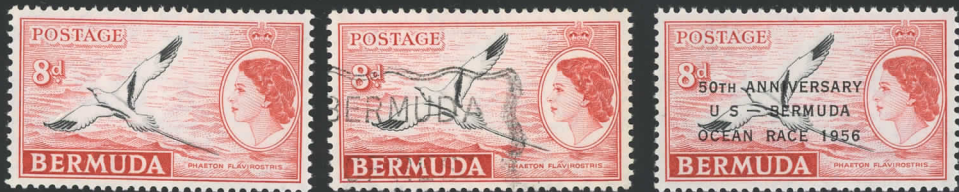


MADE IN GERMANY

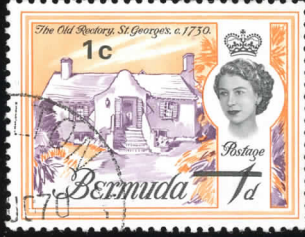
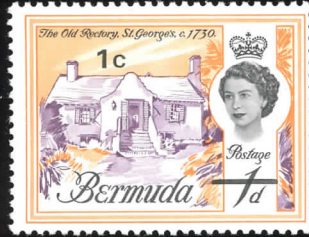










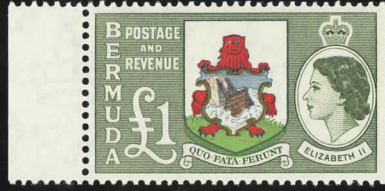






WINDERMERE









VARIO

Made in Germany





W. B. Parry's Post Office













Made in W. Germany



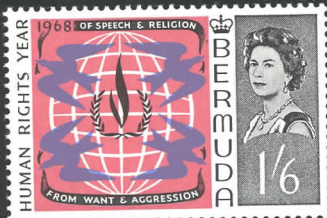
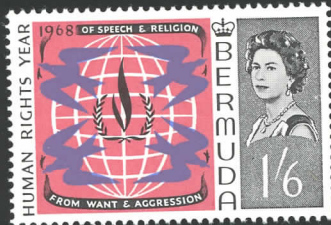
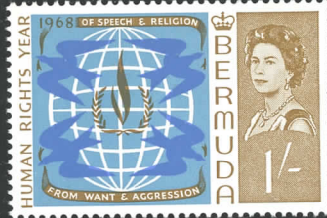
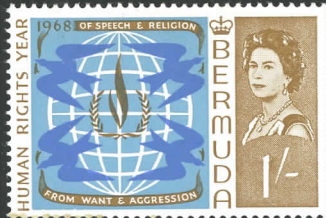


MADE IN CANADA

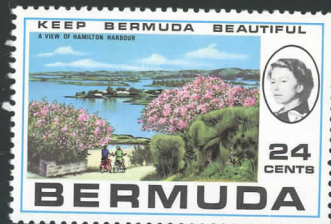
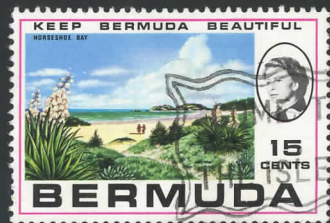
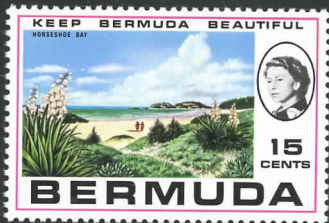
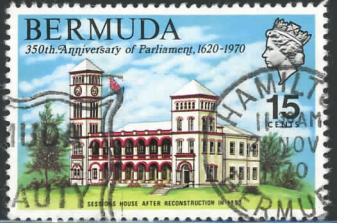












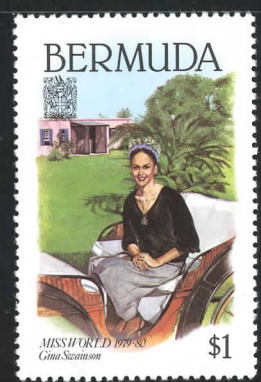














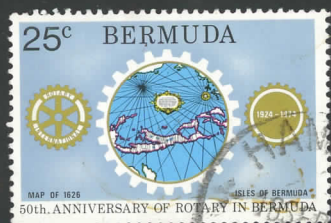
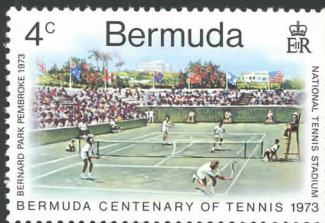


Made in W. Germany









VARIO

Made in Germany





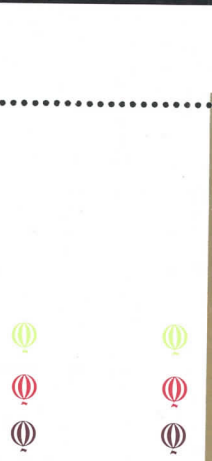
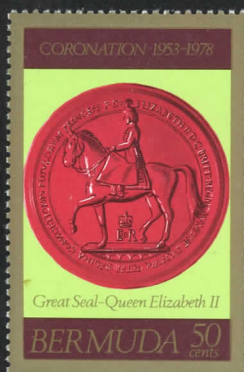
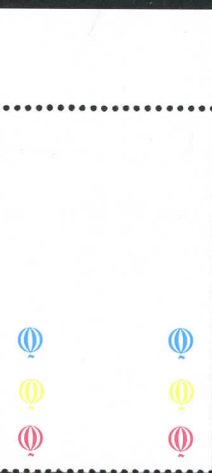
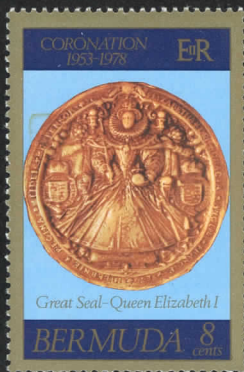
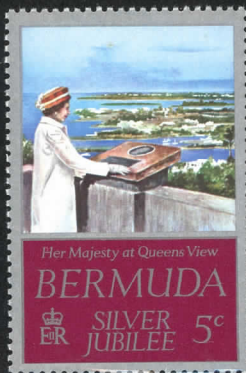




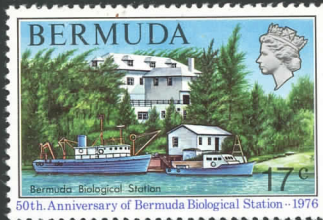
VARIO

Made in Germany

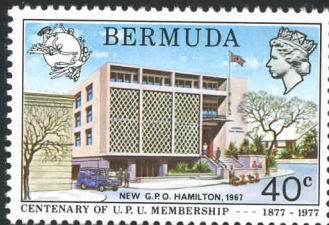
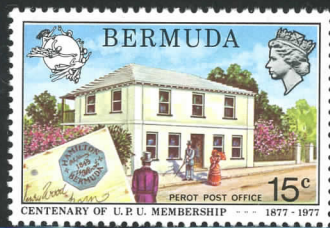
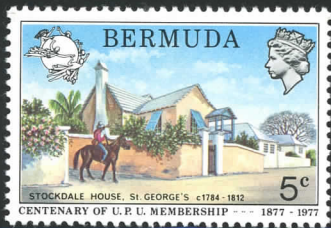




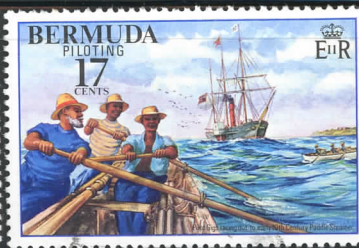
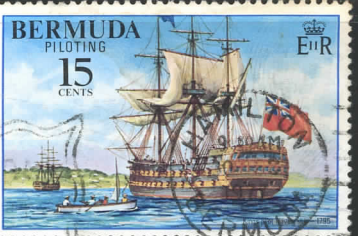




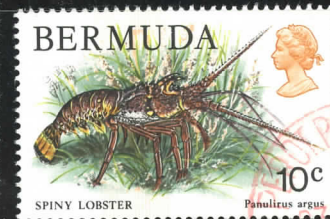












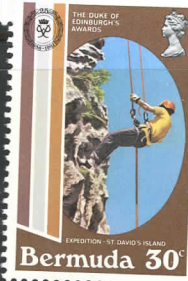




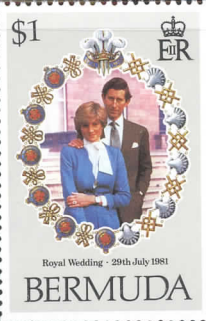
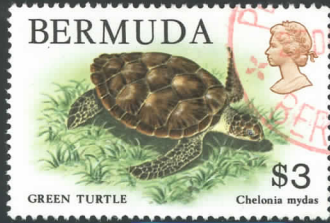
VARIO

Made in Germany









VARIO

Made in Germany



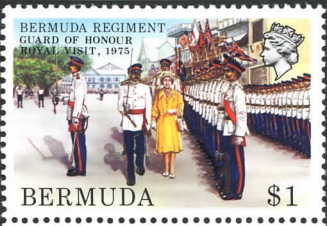


The House of Questa

The House of Questa

The House of Questa

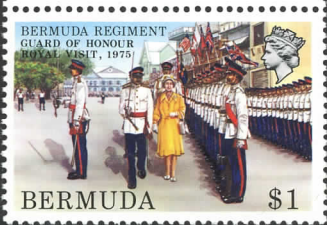
The House of Questa



The House of Questa

The House of Questa

1D



BERMUDA \$1

BERMUDA 50c

BERMUDA 50c

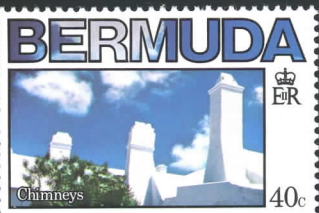
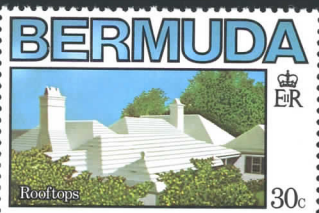




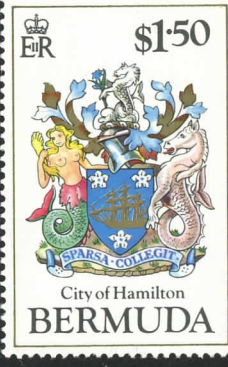
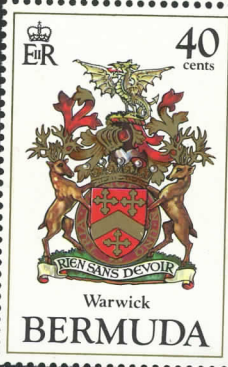
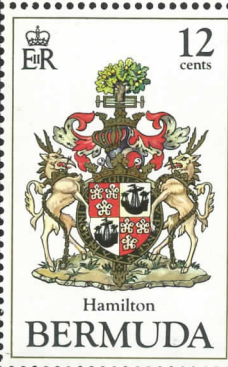
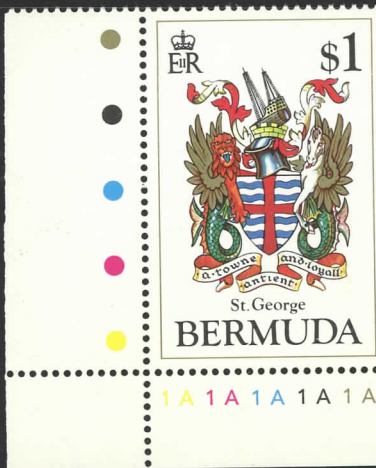
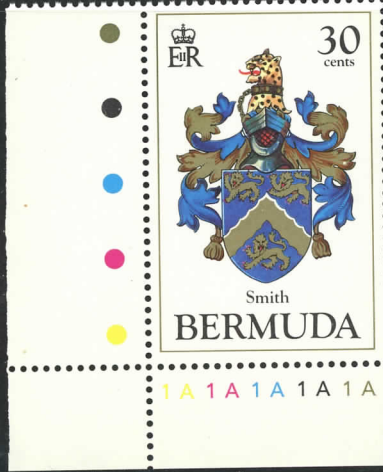
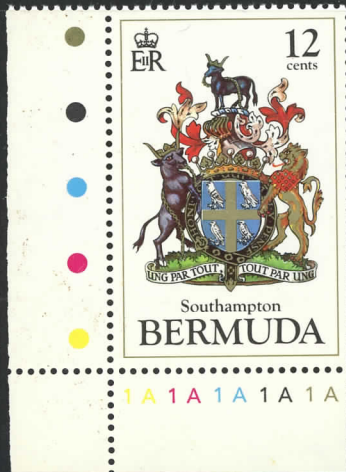
VARIO

Made in Germany









Made in W. Germany









VARIO

Made in Germany

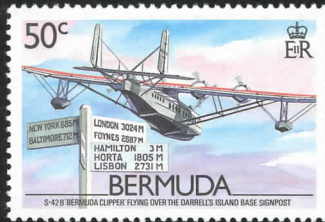
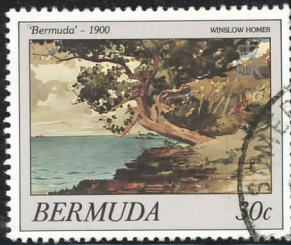












1938 W. 928A





The House of  
Questa



The House of  
Questa



The House of  
Questa



The House of  
Questa



VARIO

Made in Germany









VARIO

Made in Germany





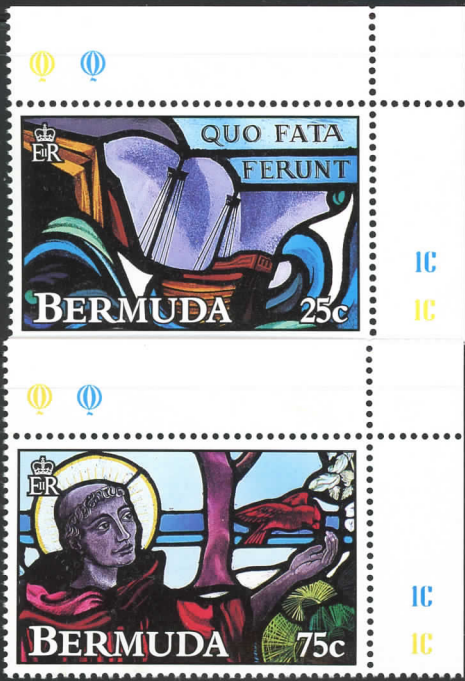




VARIO

Made in Germany







VARIO

Made in Germany



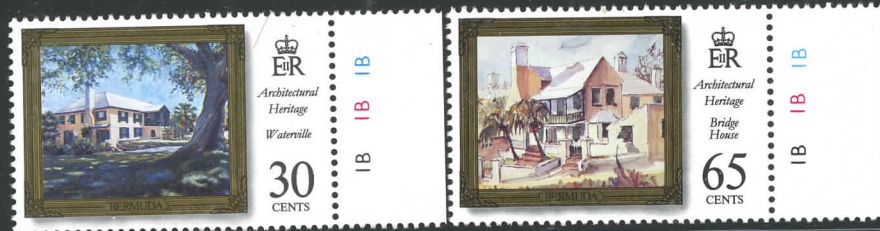
















VARIO

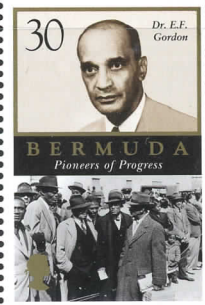
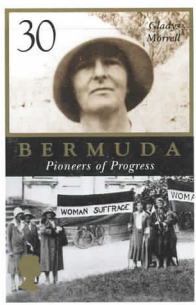
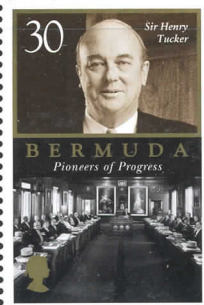
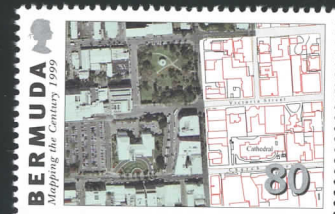
Made in Germany







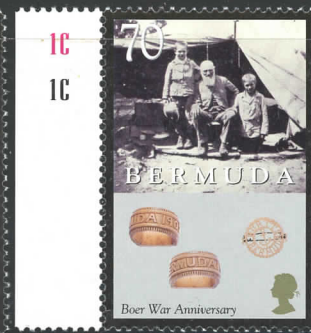
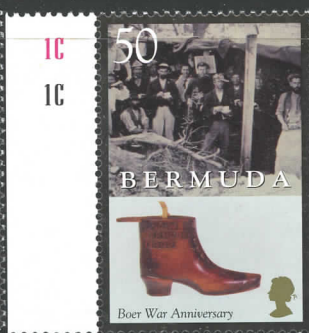
CARTOR











VANHO

MADE IN GERMANY



VARIC

M le Jim Germain







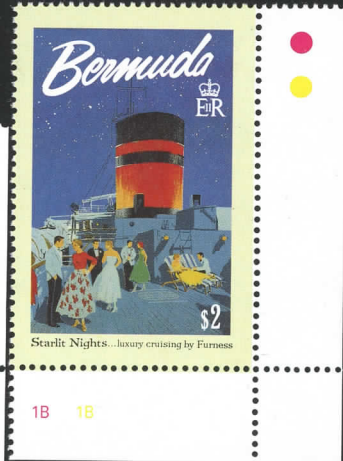




VARIC

le lin Germany



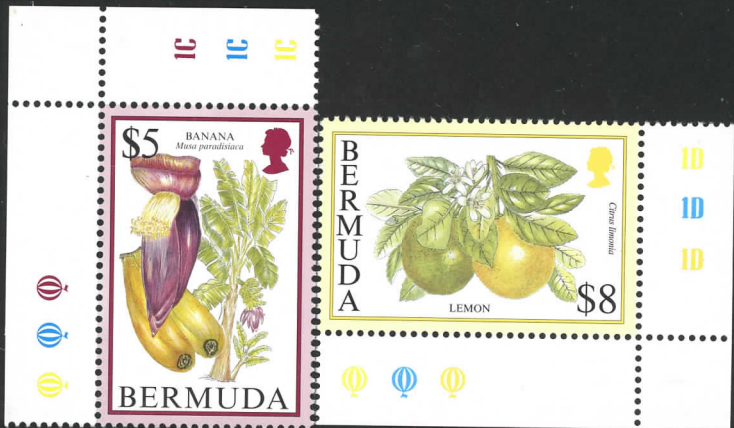
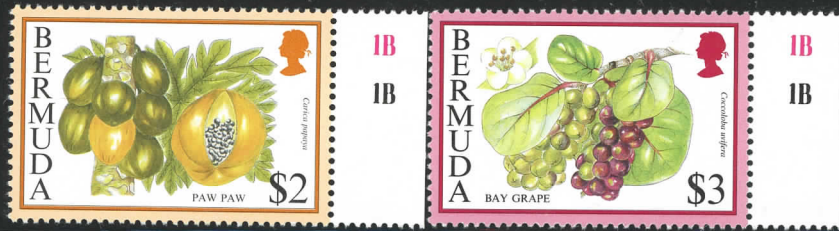


Machery in W. C. 30/10/1954



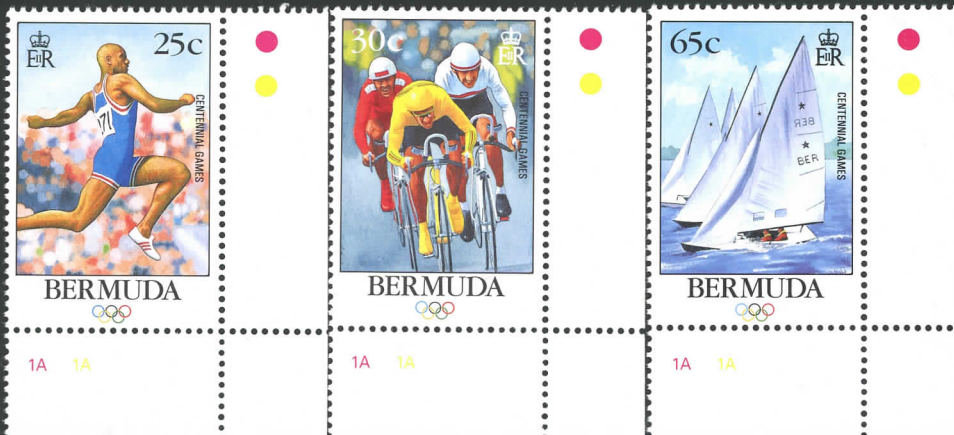
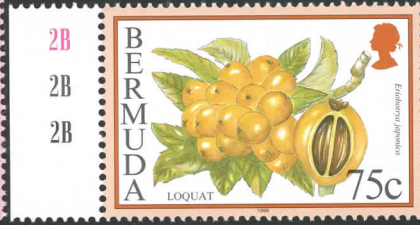




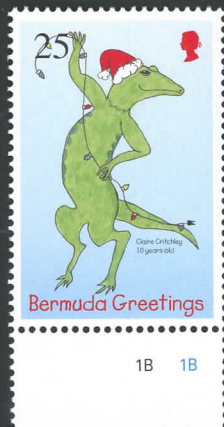


Machette, W. C. (1964-1965)

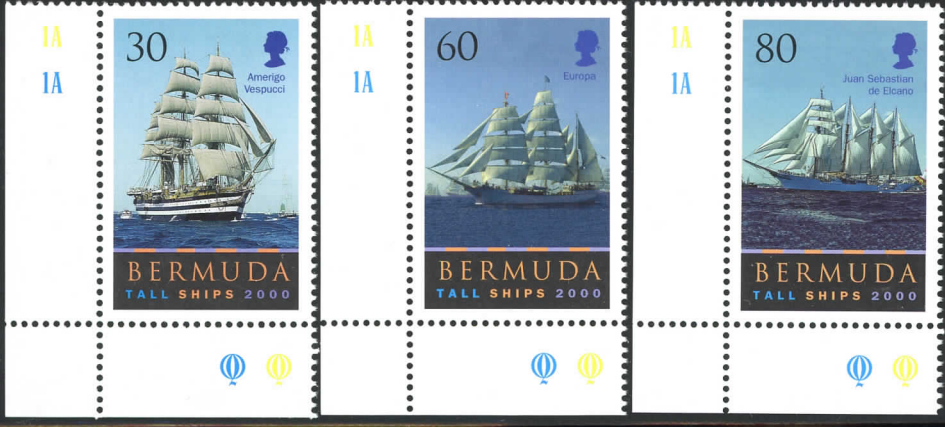
















BERMUPEX '75  
INTERNATIONAL STAMP EXHIBITION

Souvenir Sheet

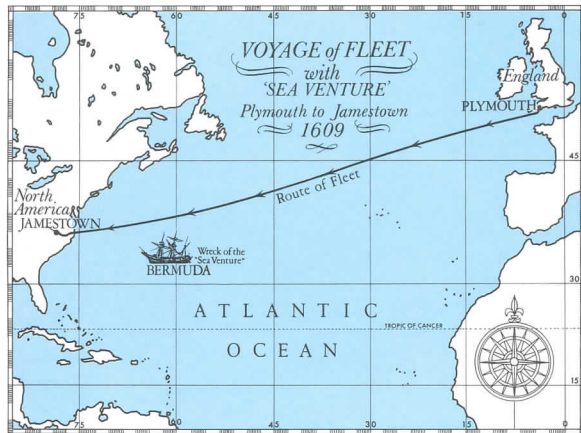


29th / 30th November 1975

Southampton Princess Hotel, Bermuda



The Life and Times of  
Her Majesty Queen Elizabeth The Queen Mother



375th Anniversary of Bermuda







# BERMUDA



CHICAGO  
U. S. A.





DIANA, PRINCESS OF WALES  
1 July 1961 - 31 August 1997



ER BERMUDA 30

ER BERMUDA 40

ER BERMUDA 65

ER BERMUDA 80

\$2.15  
+  
25c  
surcharge

*In respect of international sales, 25c from the total selling price shown on the souvenir sheet will be donated to The Diana, Princess of Wales Memorial Fund.*



*In respect of all national sales, 25c from the total selling price will be donated to a designated local charity.*



Royal Birthdays



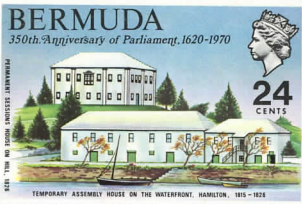
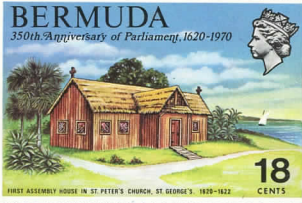
VARIO

Made in Germany





# BERMUDA



350th Anniversary of Parliament, 1620-1970



80th Birthday of



*H. M. Queen*

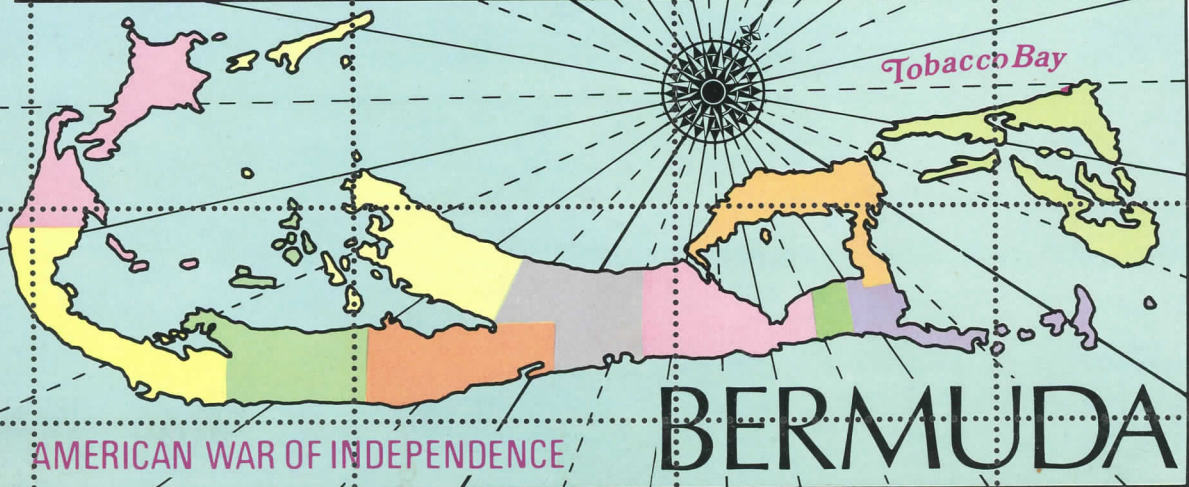
*Elizabeth The*

*Queen Mother*

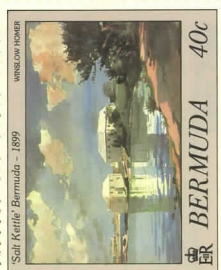
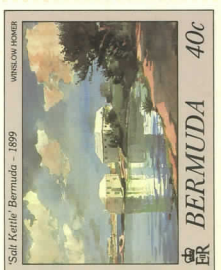
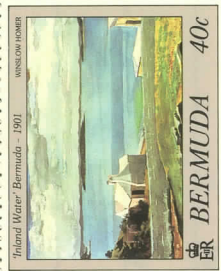
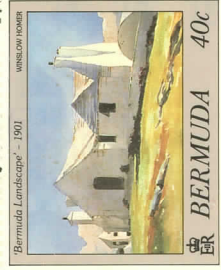
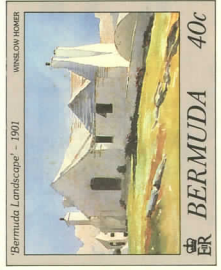
200th ANNIVERSARY of GUNPOWDER PLOT at St. GEORGES 1775.



Gunpowder was urgently needed by the American Army in 1775 during the War of Independence and one dark night in August of that year, a band of sympathisers broke through the roof of the Royal Magazine at St. George's. One hundred barrels of gunpowder were taken to the American ships lying off Tobacco Bay. The daring theft was not discovered until the next morning. Artistic licence shows the magazine closer to the sea than was actually so. The American ships also lay further out to sea, but complete accuracy would spoil a stirring picture.











## HAMILTON AND S

The panoramas of Hamilton British architect who was National Exhibition in Tor illustrate views of Bermu

The Hamilton view is pair with the Furness Line Sh Passage. The first major Princess Hotel when it w it appeared before it burn roof, very much as it is to in the ever-changing face and sweeping through th were then coral without th that time

The view of St. George's north and west again, wit painted prior to the US N David's via the bridge on but the pylons remain. Or access to the harbour of These glorious panoram

IA IB IC ID

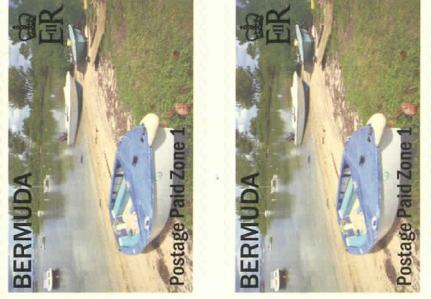
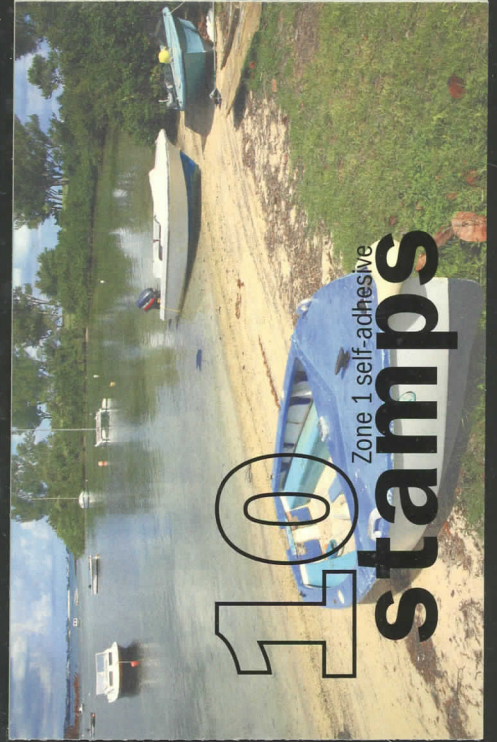


IA IB IC ID

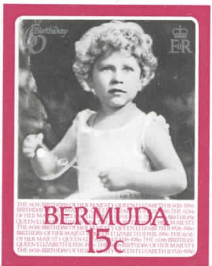
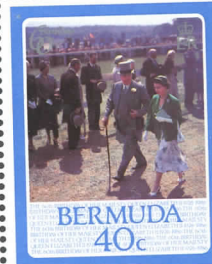
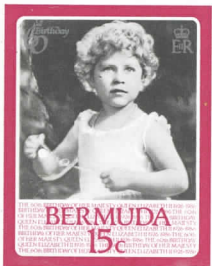
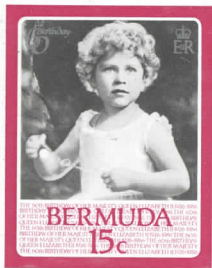
IA IB IC ID

WALSALL SECURITY PRINTERS LTD.  
WALSALL, ENGLAND





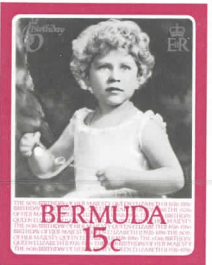
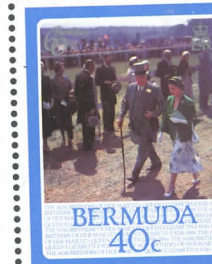
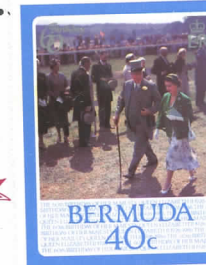
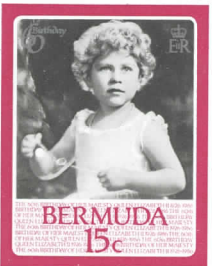




*60th  
Birthday  
Greetings  
H.M. Queen  
Elizabeth II*



*60th  
Birthday  
Greetings  
H.M. Queen  
Elizabeth II*

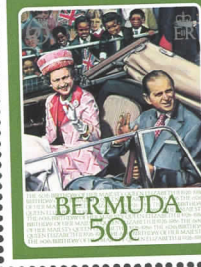
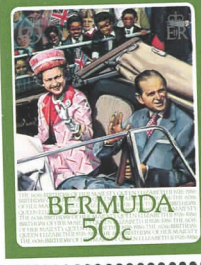
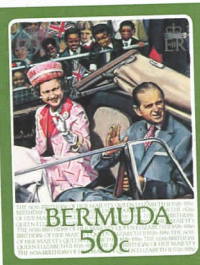


ONS LTD LONDON

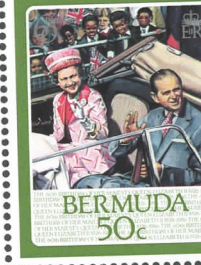
ONS LTD LONDON

HARRISON AND S

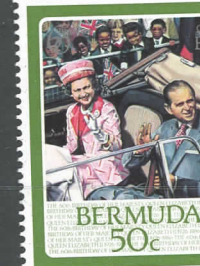
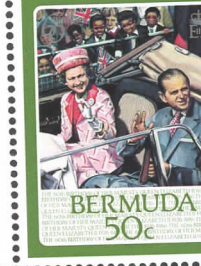
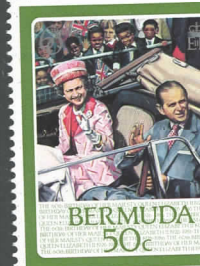




60th  
Birthday  
Greetings  
HM Queen  
Elizabeth II



60th  
Birthday  
Greetings  
HM Queen  
Elizabeth II



NS LTD LONDON

HARRISON AND S

NS LTD LONDON

HARRISON AND S



 <p>BERMUDA \$1.50</p>		 <p>BERMUDA \$1.50</p>
 <p>BERMUDA \$1.50</p>		 <p>BERMUDA \$1.50</p>
 <p>BERMUDA \$1.50</p>	<p>60th Birthday Greetings H.M. Queen Elizabeth II</p>	 <p>BERMUDA \$1.50</p>
 <p>BERMUDA \$1.50</p>		 <p>BERMUDA \$1.50</p>
 <p>BERMUDA \$1.50</p>		 <p>BERMUDA \$1.50</p>

ONS LTD LONDON

HARRISON AND S





BERMUDA

The White-Tailed  
Tropic Bird  
and the Cahow



1-5 February 2001