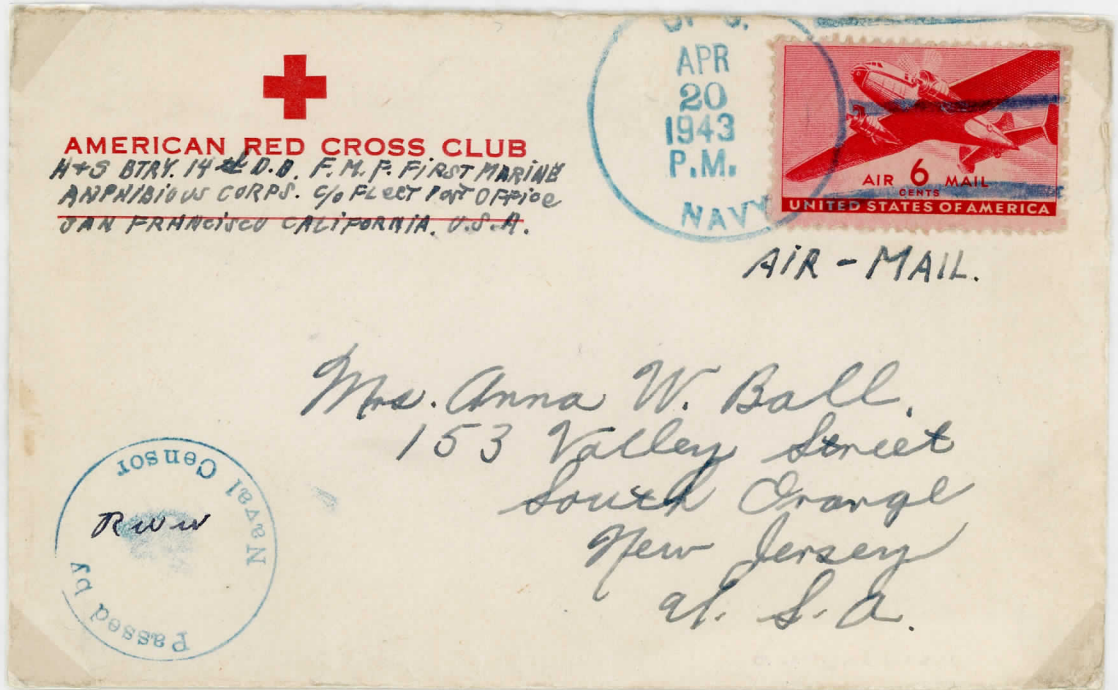


20 APRIL 43
N-M1

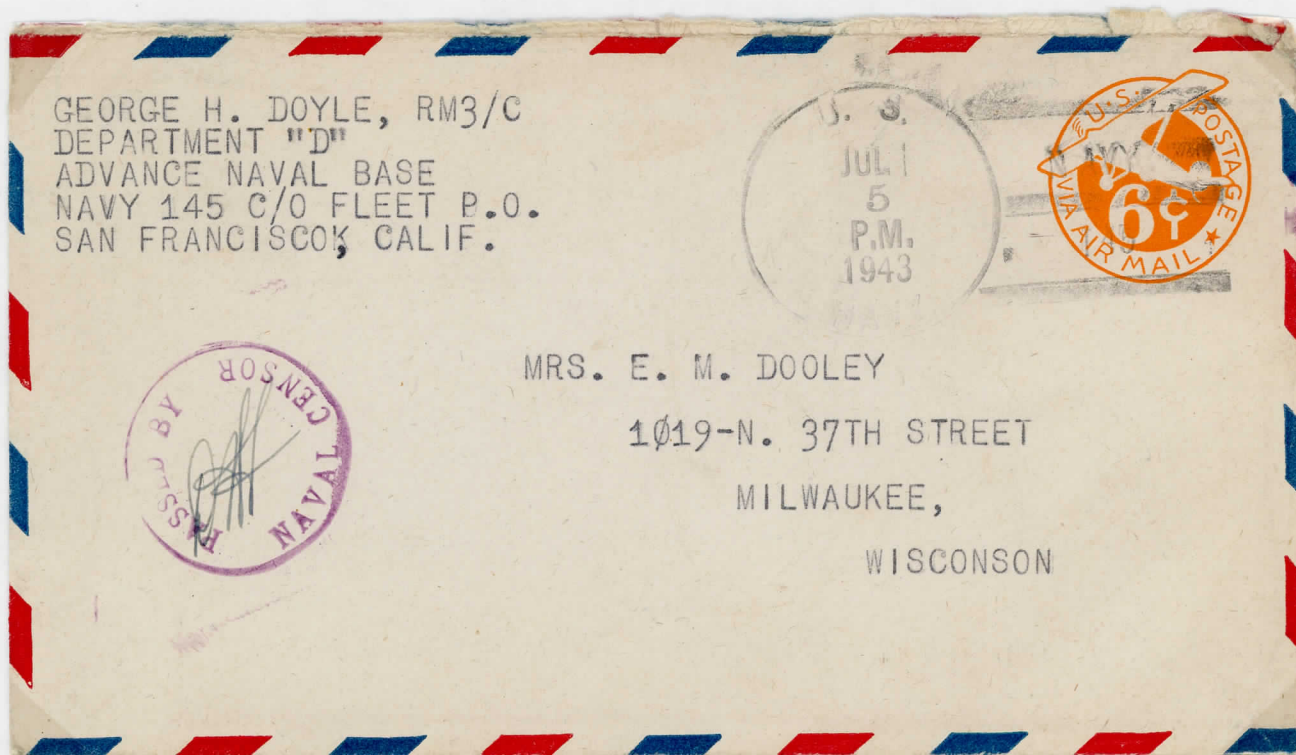
BRITISH SOLOMON ISLANDS PROTECTORATE (WESTERN PACIFIC) —
WORLD WAR II CAMPAIGN, POSTAL HISTORY



This is a cover from a member of the 14th Defence Battalion (First Marine Force) First Marine Amphibious Corps stationed at Tulagi from the 16th January 1943 to the 25th September 1943. This Battalion was formed from Detachments "A" and "B" of the 5th Defence Battalion. No post office was activated for this Unit. Covers were cancelled with Jersey type N-M1 using turquoise-green ink. The circular PASSED BY NAVAL CENSOR applied to cover is in the same colour ink as the C.D.S. and is, as yet, untyped but could possibly be the Unit Censor's mark.

5 July 43
N2

BRITISH SOLOMON ISLANDS PROTECTORATE (WESTERN PACIFIC) —
WORLD WAR II CAMPAIGN, POSTAL HISTORY

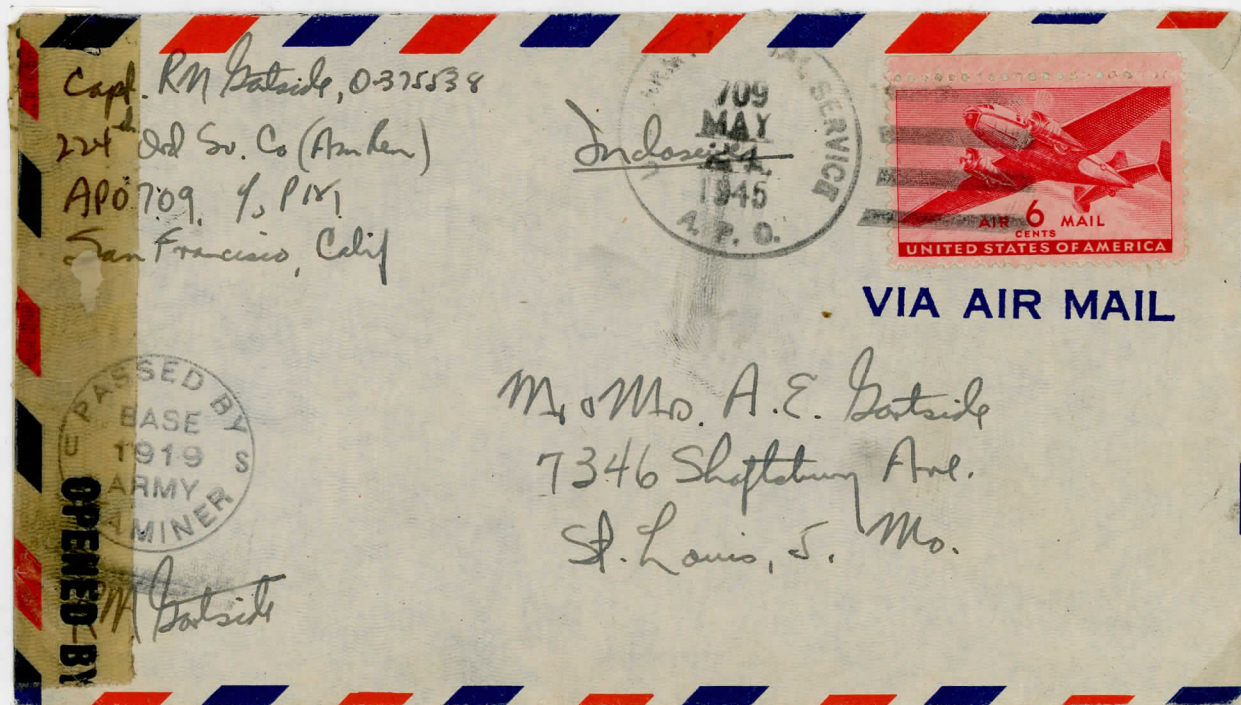


A Cover from Navy Number 145 on Guadalcanal with the regular Navy flag canceller of 5 JUL 1943 showing "NAVY/145" in two lines between the killer bars. This type of postmarker has been noted in use in this manner from early February 1943 until January 1944.

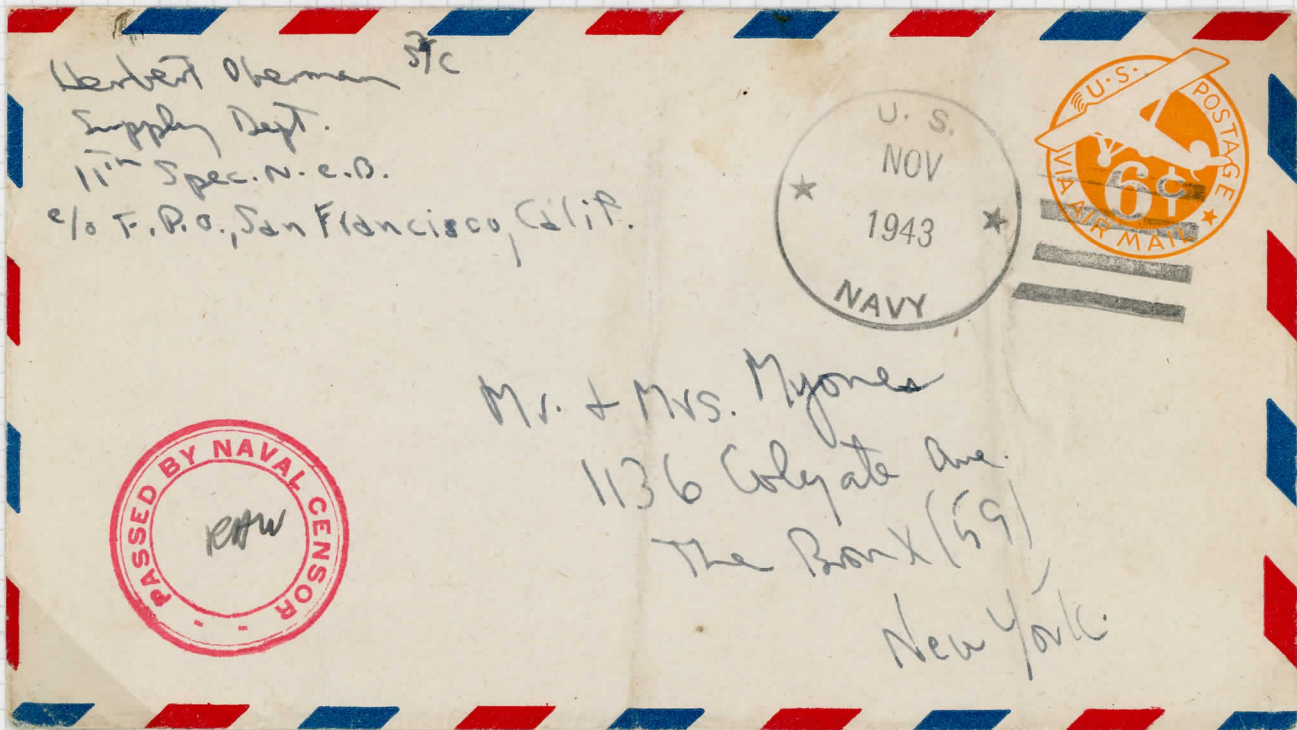
Navy 145 was the code for the Fleet Post Office stationed at Guadalcanal between 12 February 1943 until 17 June 1946. Cancellor is Jersey type N-2 and the censoring mark Gisburn type 59.

24 MAY 45
A7

BRITISH SOLOMON ISLANDS PROTECTORATE (WESTERN PACIFIC) —
WORLD WAR II CAMPAIGN, POSTAL HISTORY



The Cover illustrated is from a member of the 224th Ordnance Service Company; Jersey type A-7 datestamper applied and Gisburn type 57 censor cachet applied, the cover being self-censored.

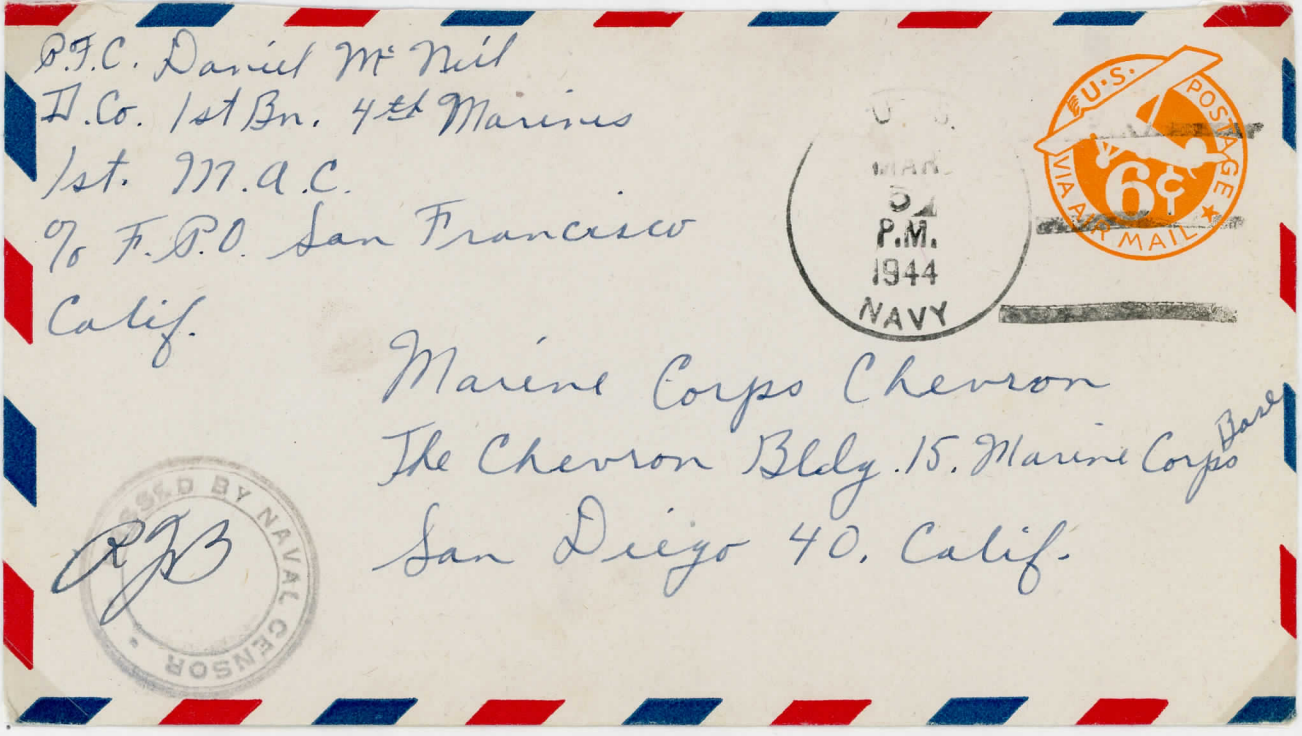


SUPPLY DEPARTMENT, 11TH NAVAL CONSTRUCTION BATTALION, "SPECIALS".
 THIS UNIT WAS STATIONAL AT NOUMEA, NEW CALEDONIA FROM
 THE 30 OCTOBER 1943, UNTIL JANUARY 1944.

5 MAR 44
N-M 1

BRITISH SOLOMON ISLANDS PROTECTORATE (WESTERN PACIFIC) —

WORLD WAR II CAMPAIGN, POSTAL HISTORY



This is a cover from a member of the 1st Battalion 4th Regiment 1st Marine Amphibious Corps. The Unit's regulating branch post office (Marine Corps Post Office No. 845) postal workload in the early organisational days was only accomplished through long hours of work and drawing on work parties from the local Marine Units. However by mid-1943 two officers and 34 men of other ranks were regularly assigned with a working party of up to 26 from the Transient Centre to supplement assigned clerks. This post office was responsible for the routing of all Marine mail in the South Pacific. This area covers Marines serving in five countries and several small islands garrisoned by Marine Corps personnel.

The Headquarters and post office of this unit was stationed at Camp Tetere (also called Coconut Grove Camp from September 1943). Later it was moved to Tassafarronga, mouth of the present site of the capital, Honiara.

The cover is cancelled with Jersey type NM-1, the regular postmarker issued to all Navy and Marine Corps postal units. Censors stamp is the units censor officer's stamp.

13 Oct 44

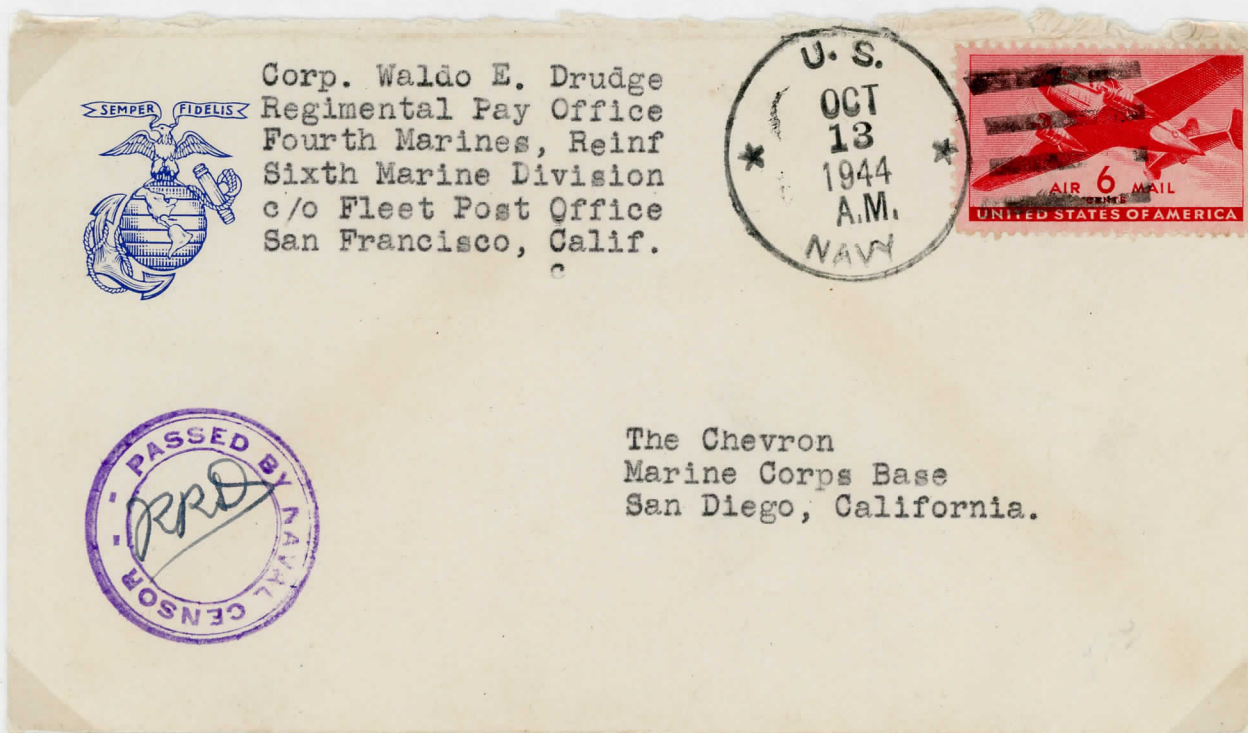
BRITISH SOLOMON ISLANDS PROTECTORATE (WESTERN PACIFIC) —

WORLD WAR II CAMPAIGN, POSTAL HISTORY

This cover is from a member of the 4th Marines Reinforced - 6th Marine Division on Guadalcanal to the Marine Corps Base in California. The 6th Marine Division was raised on the 7th September 1944 and Capt. Fred D. Conderman was assigned as the Unit's Postal Officer. The Officer had previously served in the Solomon's Campaign as the Postal Officer to the 1st Marine Division.

The post stamp assigned to this Unit was number 12922, a branch of the New York Post Office.

Censor's stamp, applied in violet, is the Units own censoring officer's stamp.



The 6th Marine Division trained on and around Guadalcanal for its part in the Okinawa and Ryukyu Islands assaults and landings. Thus the dates for the 6th Division on Guadalcanal are 7th September 1944 to 15 May 1945.

BRITISH SOLOMON ISLANDS PROTECTORATE

UNITED STATES FORCES (MARINES) WORLD WAR II

This is a cover from a member of the Divisional Headquarters Company of the First Marine Division (First Marine Force) stationed at Pavuvu Island in the Russell Group between the 28th April 1944 and 7th September 1944 and again between the 21st October 1944 and 27th February 1945.

The cover is cancelled with a date stamp dated 2 MAR 44, Jersey type M-19. The Unit's censor mark is applied in violet.

The date stamp used was issued by the Marine Corps Post Office 730 for use by the First Marines and was officially designated the title MCPO 755, and attached to the First Marine Division Headquarters.

There is no back stamping.



11 FEB 44.
CB-26.

BRITISH SOLOMON ISLANDS PROTECTORATE (WESTERN PACIFIC) —
WORLD WAR II CAMPAIGN, POSTAL HISTORY



USNCB No 11, Company "D".

CMS JESSEY TYPE CB-26, DATED 11 FEBRUARY 1944

UNIT OPERATIONAL IN THE SOLOMONS ON RAJIKI ISLAND, IN THE
RUSSIAN GULF BETWEEN 1 FEBRUARY 1944 UNTIL ~~2 FEBRUARY 1945~~
3 APRIL 1944

UNITED STATES FORCES (MARINES) WORLD WAR II

The Commanding Officer
Eleventh Defense Battalion
% Fleet Post Office
San Francisco, Calif.
OFFICIAL BUSINESS

VIA AIR MAIL

Quartermaster
(Property Account Division)
Headquarters, Marine Corps.
Washington, D.C.

This is a cover from the Commanding Officer of the 11th Defence Battalion. The Unit was moved from the U.S.A. on the 3rd December, 1942 and arrived in the New Hebrides on the 21st December. The Unit sailed from the New Hebrides on the 14th January 1943 and arrived at Tulagi on the 17th.

When the Battalion reached Tulagi it was using the USMC Unit No. 870 as its mailing address. The date stamp, with killer bars, is Jersey type M-26 and is dated 9 MAR 1943 with the notation USMC/ UNIT 870 between the killer bars. This Unit was officially numbered 870 and had its own postal facilities operating as a military branch of the New York, N.Y. Post Office.

The cover is an official one and has the figures 000867 applied to the back. No censor marking was required as the envelope contained official despatches.

17 MAY 44
N-M2

BRITISH SOLOMON ISLANDS PROTECTORATE (WESTERN PACIFIC) —
WORLD WAR II CAMPAIGN, POSTAL HISTORY

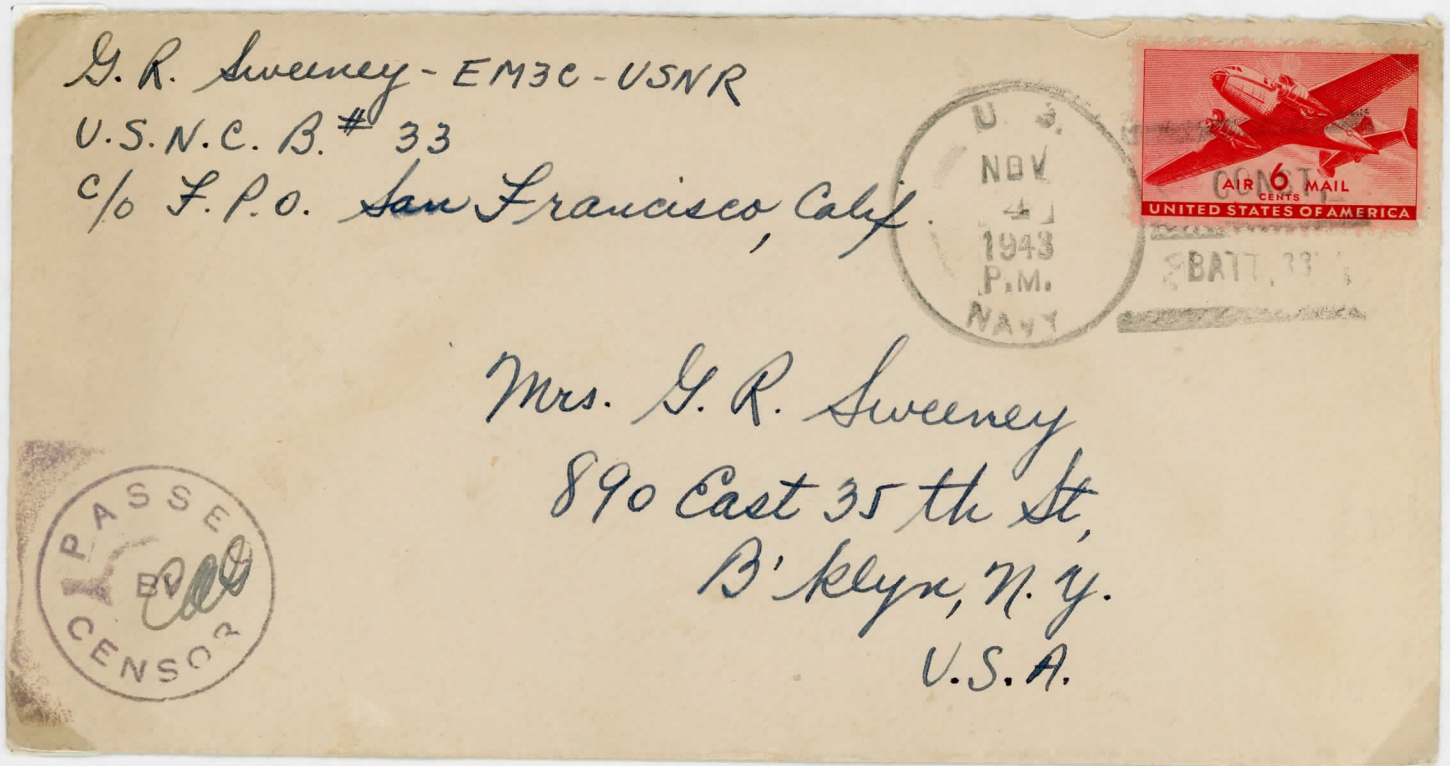


This is a Cover from a member of the 2nd Marine Depot Company attached to the 4th Base Depot stationed at Banika Island in the Russell Group. This Cover has been cancelled with Jersey type N-M2 postmarker and the unit's censoring stamp.

4 NOV 43
CB 4

BRITISH SOLOMON ISLANDS PROTECTORATE (WESTERN PACIFIC) —

WORLD WAR II CAMPAIGN, POSTAL HISTORY

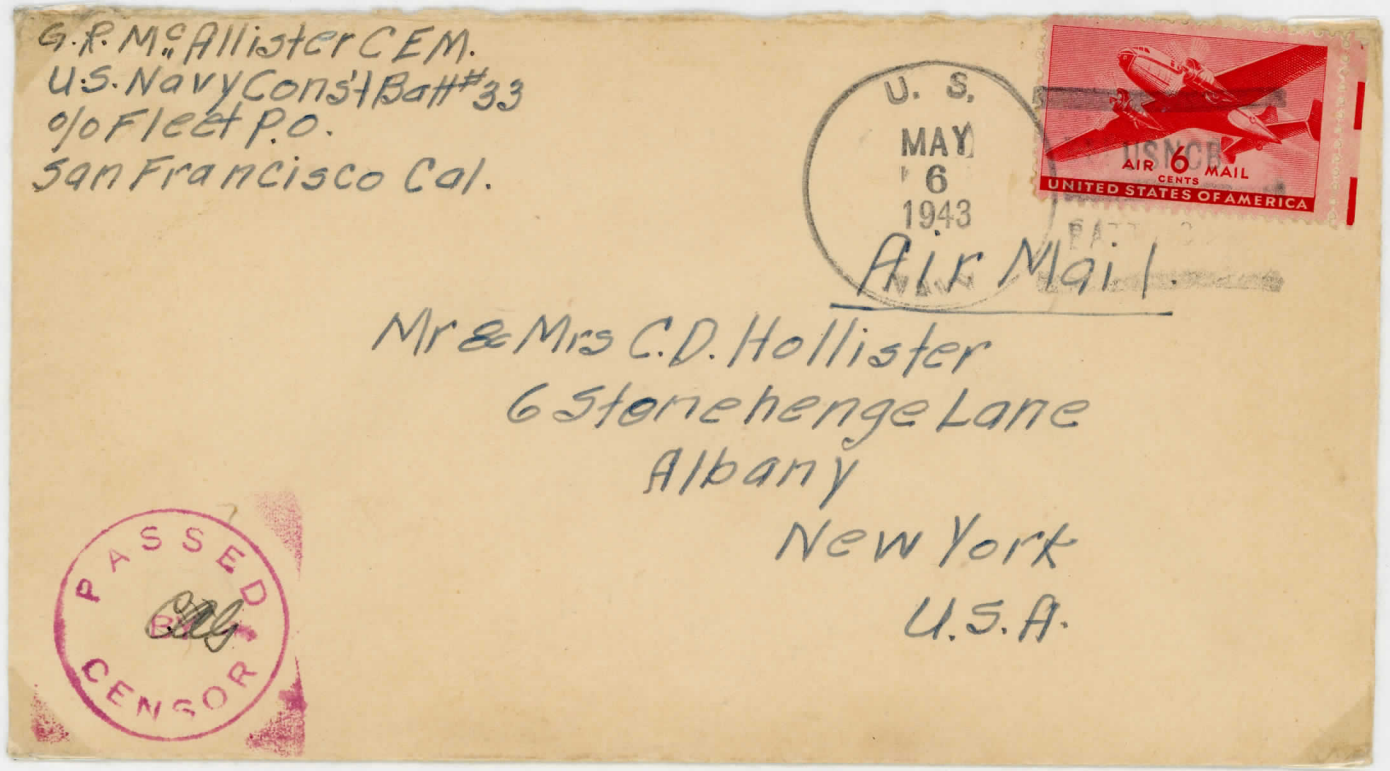


This cover, from a member of the United States Navy Construction Battalion Number 33, is cancelled with Jersey type postmarker CB-4 (33rd NCB) and has the slogan "CONST./BATT33" between the lines of the killer bars.

The "PASSED BY CENSOR" mark is particular to this unit only as it is thought that this Post Office only received one type of censor stamp.

6 MAY 43
CB 3

BRITISH SOLOMON ISLANDS PROTECTORATE (WESTERN PACIFIC) —
WORLD WAR II CAMPAIGN, POSTAL HISTORY



This is a cover from a member of the U.S. Navy Construction Battalion Number 33 stationed at Banika Island in the Russell Group from 21 February 1943 until 19 November 1943. The canceller used is Jersey type CB-3 (33rd NCB) with the slogan "USNCB/BATT33" between the killer bars.

The censor stamp, applied in red, is only seen on covers from the 33rd NCB or from members of other units posting their mail at the 33rd NCB postal unit. This unit is thought to have only been issued with one type of censor stamp. Other units and post offices were equipped with several different types of censor stamps.

19 JULY 44
M-16

BRITISH SOLOMON ISLANDS PROTECTORATE (WESTERN PACIFIC) —
WORLD WAR II CAMPAIGN, POSTAL HISTORY

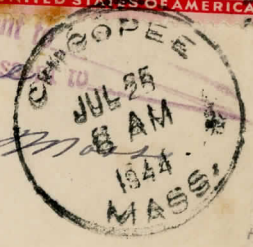


U. S. MARINE CORPS

*Plk. Edward Borowski
Co. 3rd Bn. 1st Marine
Flight Post Office
San Francisco, Calif.*



*Miss Louise Gien
43 Baltimore Ave
Chicopee Falls, Mass.*



From Company "K", 3rd Battalion, 1st Marine Division

C.d.s. Jersey type M-16

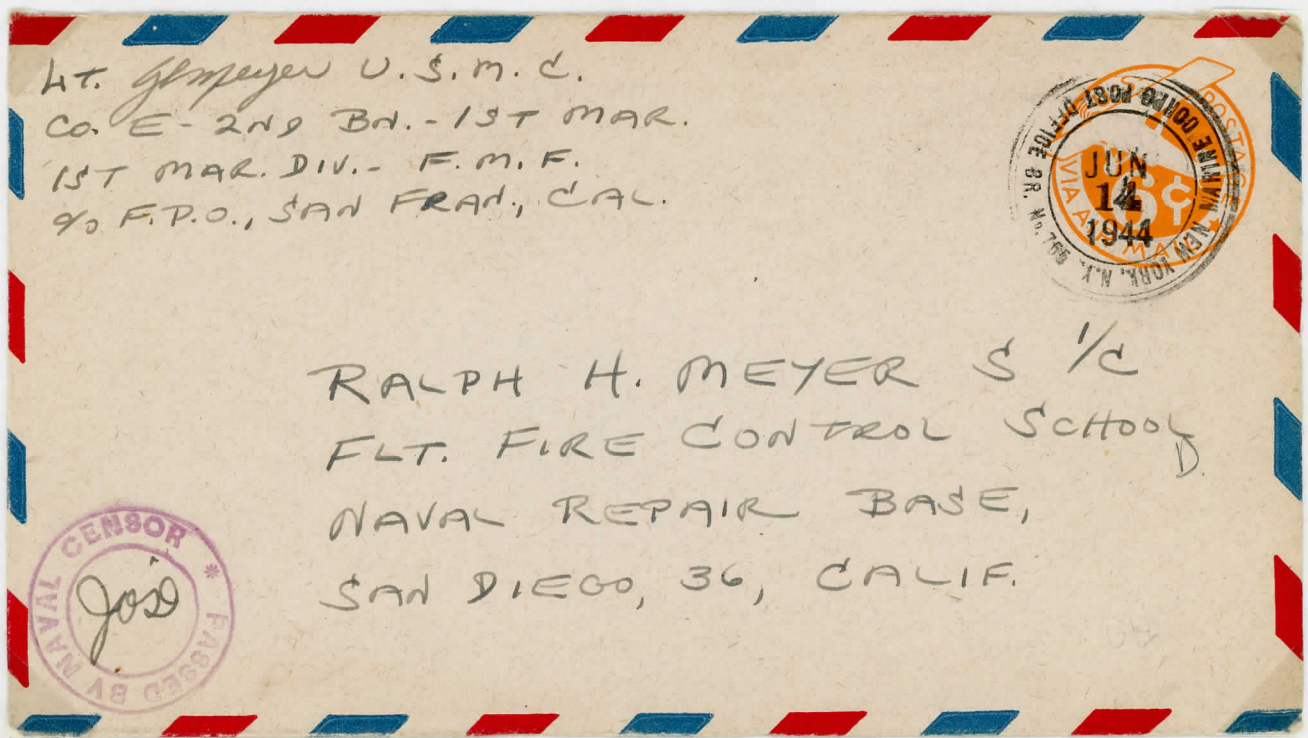
This cds was the registration mark of the First Marines, commonly seen used at Pavuvu as a postal canceller.

Unit stationed at Pavuvu, Russell Is. from 28 April 1944 until 8 Sept. 1944.

14 JUNE 44
M16

BRITISH SOLOMON ISLANDS PROTECTORATE (WESTERN PACIFIC) —
WORLD WAR II CAMPAIGN, POSTAL HISTORY

UNITED STATES FORCES (MARINES) WORLD WAR II



This is a cover from the Officer Commanding Company "E" 2nd Battalion - 1st Marine, 1st Marine Division (First Marine Force). The date stamp includes identifying no. MCPO 755 which was later changed to 12867 Unit 1, Jersey type M-16. The Unit's Censor mark is applied in violet.

The Battalion was stationed on Pavuvu Island in the Russell Group between the following dates -

- 28th April 1944 - 7 September 1944
- 10th October 1944 - 1 March 1945

The cover is back stamped with a straight line date stamp JUN 20 1944 applied in the same colour as the Censor's stamp, possibly stamped by the Censor himself. The cover is also back stamped with the number 3989 in red.

20 July 44
A-8

BRITISH SOLOMON ISLANDS PROTECTORATE (WESTERN PACIFIC) —

WORLD WAR II CAMPAIGN, POSTAL HISTORY



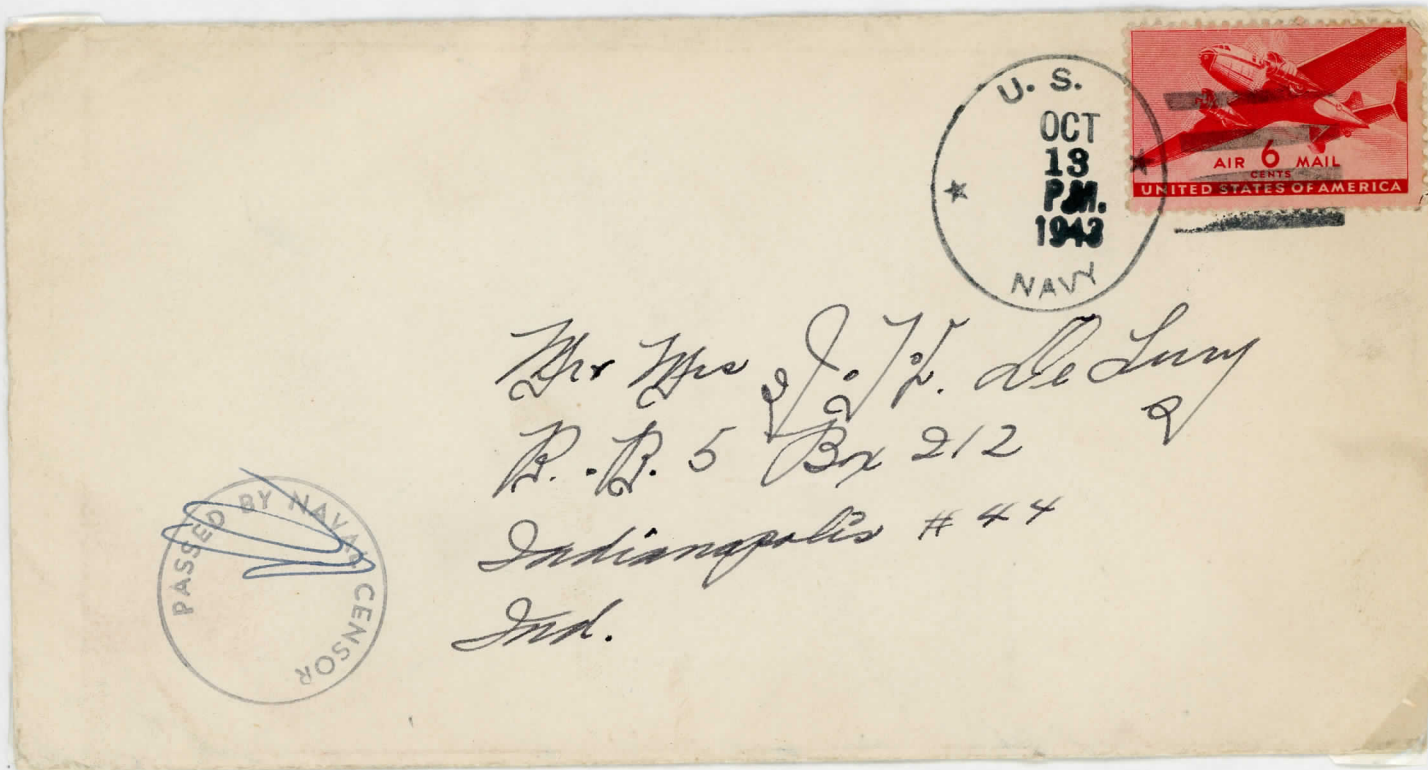
150TH ARMY AIRWAYS COMMAND SQUADRON.

CAS HERSHEY TYPE A-8, BATHS 20 JULY 1944, THIS CAS OF APO 709, WHICH WAS STATIONED ON GADABAC CAVAL FROM THE 13 DECEMBER 1942 UNTIL 30 OCTOBER 1949.

13 Oct 43

BRITISH SOLOMON ISLANDS PROTECTORATE (WESTERN PACIFIC) —

WORLD WAR II CAMPAIGN, POSTAL HISTORY



On the 30th January 1943 the Navy Department issued a directive abolishing Navy Numbers for Construction Units. The following is an extract from that Order:

"(3) Conforming to change of the Department's policy, mail addresses for Lions, Cubs, Acorns and Construction Battalions are hereby abolished. Mail addresses to Navy Numbers for these units will continue to be forwarded and the Navy Number will be retained on this list as a matter of record for mail handling officers."

The Navy Number referred to for this unit listed as the sender's return address was '8245'. This was no longer necessary as per the above so the address simply reads 46th N.C.B. F.P.O. San Francisco.

This Cover is also unusual in that the sender's address is on the back instead of on the front left-hand side of the Cover. The unit was stationed on Guadalcanal between the 23rd March 1943 and 22nd November 1943. The datestamp and killer bars are of a type as yet unclassified and the censor mark is type 59 Gisburn.

26 APRIL 43
CB-3.

BRITISH SOLOMON ISLANDS PROTECTORATE (WESTERN PACIFIC) —

WORLD WAR II CAMPAIGN, POSTAL HISTORY

George R Sweeney - EM3C



Mrs G. R Sweeney
890 East 35th St
B'klyn, N.Y.
U.S.A.



VIA AIR MAIL

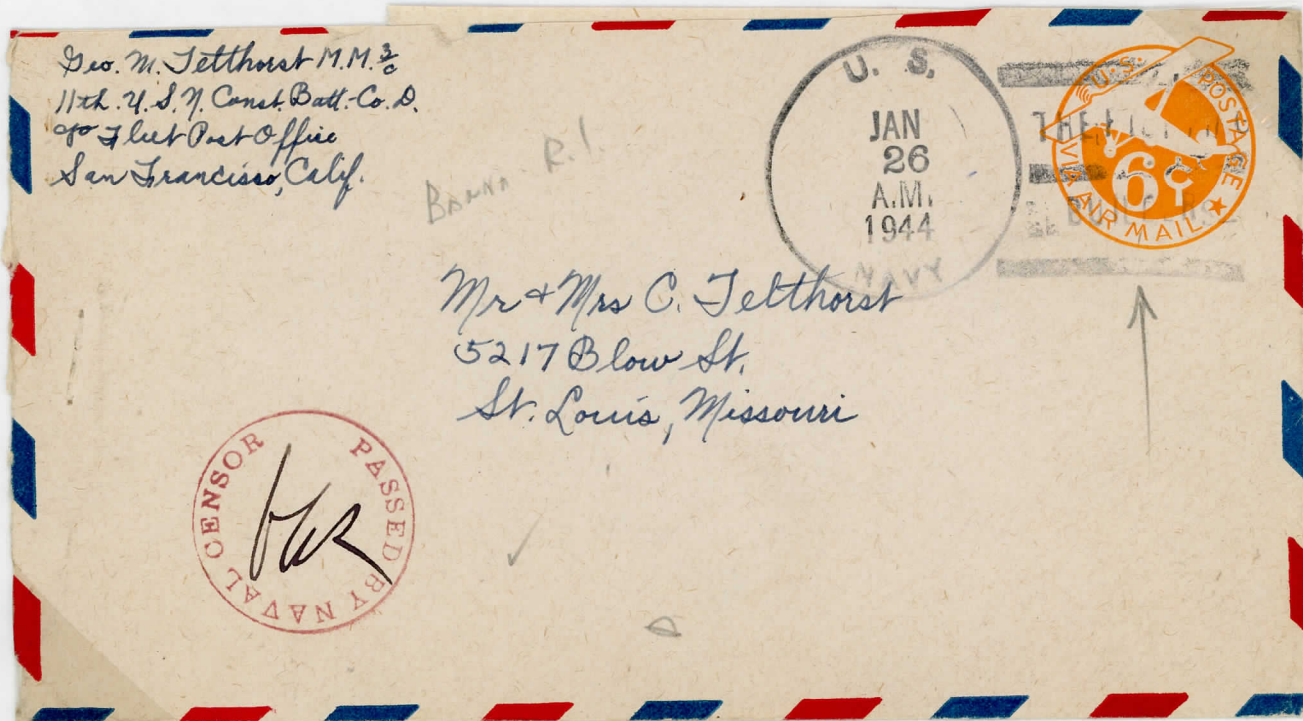
U.S. NAVY CONSTRUCTION UNIT 33, USNCB - BATT 33.

CNS HERSEY TYPE CB-3 DATED 26 APRIL 1943. POST OFFICE OPERATIONAL ON BANKA ISLAND IN THE RUSSELL GROUP BETWEEN 21 FEBRUARY 1943 AND FEBRUARY 1944.

BRITISH SOLOMON ISLANDS PROTECTORATE (WESTERN PACIFIC) —

26 Jan 44
CB-26

WORLD WAR II CAMPAIGN, POSTAL HISTORY



USNCB NO 11, COMPANY "D".

CMS HERSEY TYPE CB-26, MARKED 26 JANUARY 1944

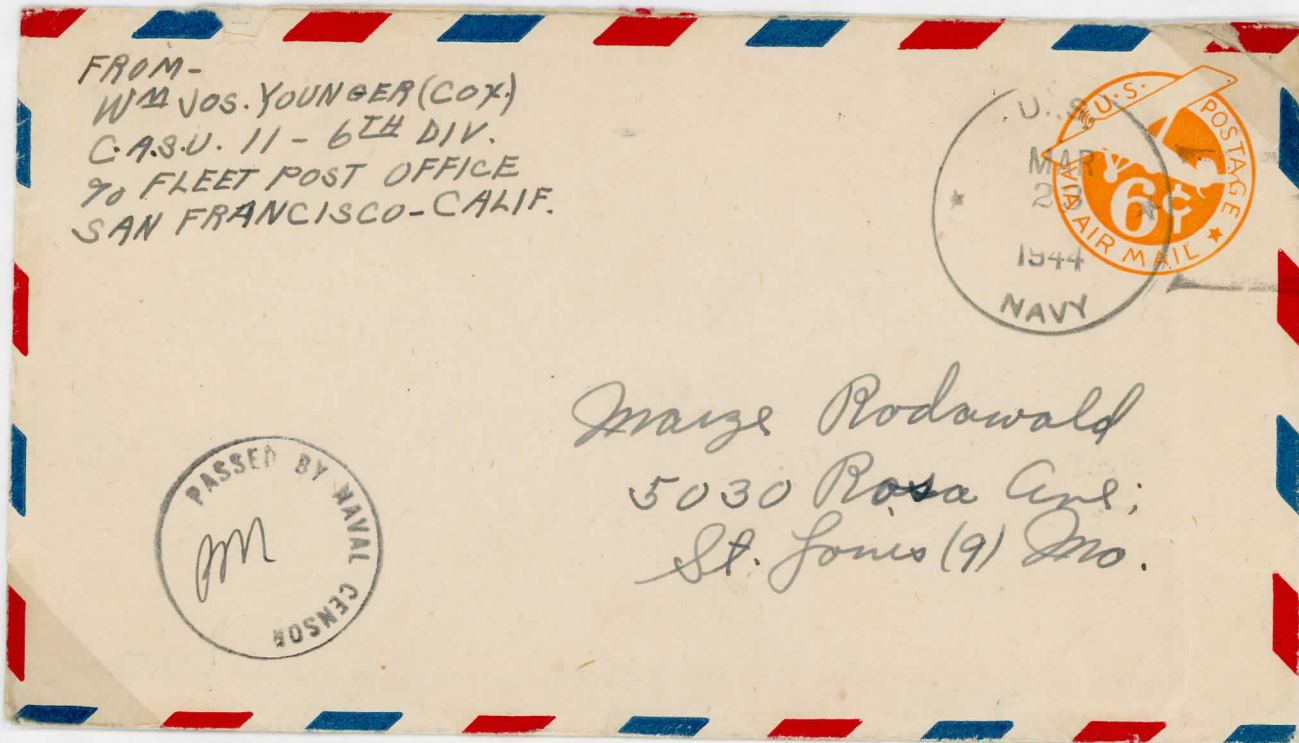
THIS UNIT WAS OPERATIONAL IN THE SOLOMONS ON BANIKA ISLAND
IN THE RUSSELL GROUP BETWEEN THE 8 JANUARY 1944 UNTIL
THE 3 APRIL 1944.

23 MARCH 44

NM-2

BRITISH SOLOMON ISLANDS PROTECTORATE (WESTERN PACIFIC) —

WORLD WAR II CAMPAIGN, POSTAL HISTORY



CASU No 11, 6th Division.

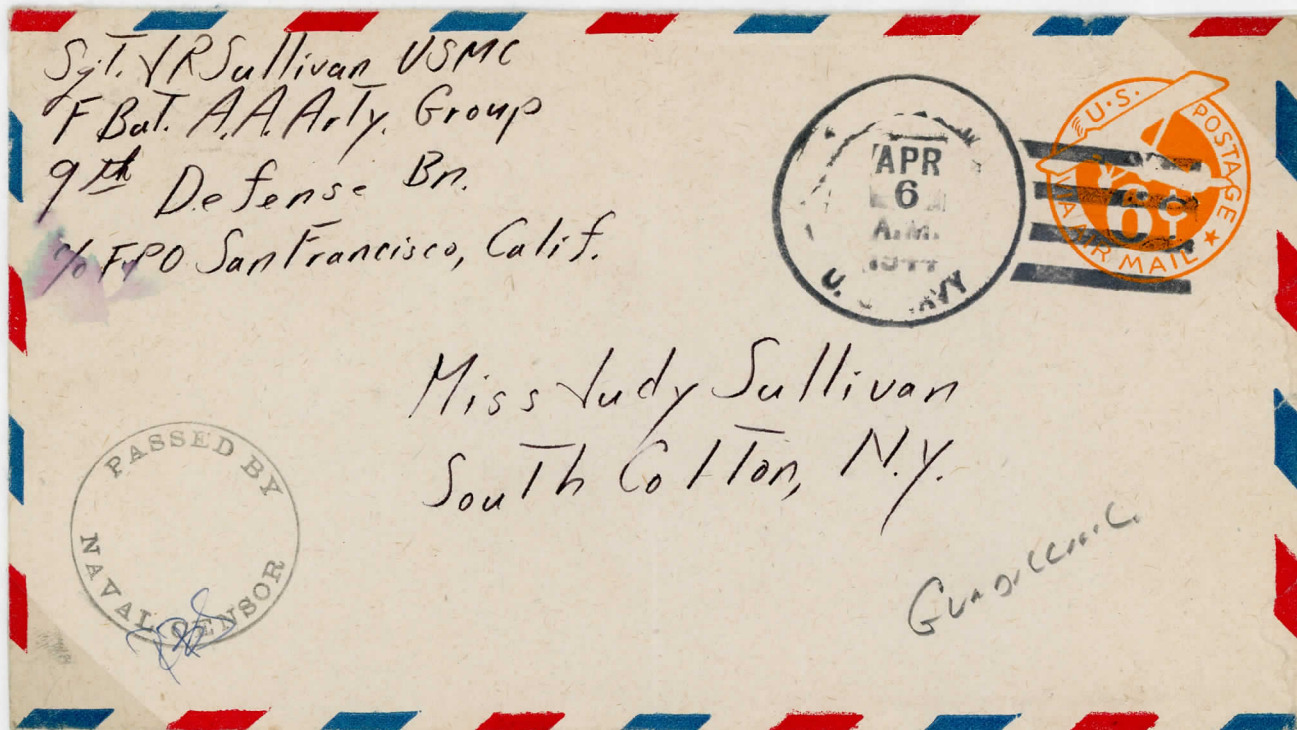
CMS Jersey NM-2, DATED 23 MARCH 1944. THIS TYPE OF CMS IS TO BE FOUND ON BOTH NAVY AND MARINE MAIL.

CASU 11 OPERATIONAL ON GUADALCANAL BETWEEN 10 JULY 1943 AND AUGUST 1944.

6 APRIL 44
M-23

BRITISH SOLOMON ISLANDS PROTECTORATE (WESTERN PACIFIC) —

WORLD WAR II CAMPAIGN, POSTAL HISTORY



"F" BATTERY, ANTI-AIRCRAFT ARTILLERY GROUP, 9TH DEFENSE BATTALION.
CMS KELSEY TYPE M-23, DATED 6 APRIL 1944.

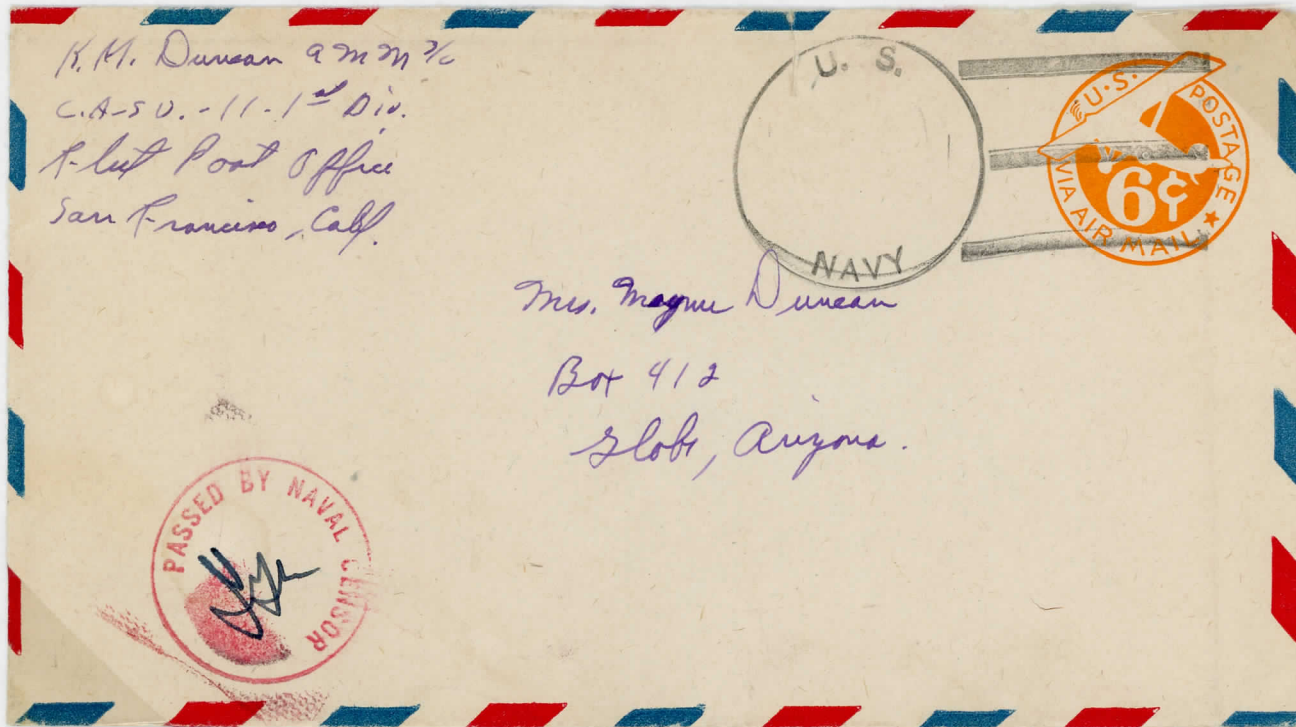
THIS UNIT HAD THE USMC UNIT NUMBER OF 865, AND WAS
STATIONED AT BANIKI IN THE RUSSELL GROUP FROM 7 FEBRUARY 1944
UNTIL 29 JUNE 1944.

1943/1944

BRITISH SOLOMON ISLANDS PROTECTORATE (WESTERN PACIFIC) —

WORLD WAR II CAMPAIGN, POSTAL HISTORY

UNITED STATES FORCES, NAVY, VOLUNTEER II



CASU No 11, 1ST DIVISION.

CMS IS LISTED AND IDENTIFIED, KNOWN TO HAVE BEEN IN USE DURING 1943 + 1944.

CASU IS OPERATIONAL ON GUADACANAL BETWEEN 10 JULY 1943 AND AUGUST 1944

14 FEB 44
N-10

BRITISH SOLOMON ISLANDS PROTECTORATE (WESTERN PACIFIC) —

WORLD WAR II CAMPAIGN, POSTAL HISTORY



HQ COMPANY, 2ND BATTALION, 9TH MARINES, 3RD MARINE DIVISION,
FLEET MARINE FORCE.

CAR TRUCK TYPE N-10, MACHINE CASE MARK FROM NAVY 152,
WHICH WAS THE FLEET POST OFFICE OPERATIONAL AT TULAGI FROM
12 FEBRUARY 1943 UNTIL 14 OCTOBER 1946.

COVER DATED 14 FEBRUARY 1944 AND UNIT WAS OPERATING
ON GUADALCANAL BETWEEN 7 JANUARY 1944 UNTIL 7 JUNE 1944

19 APRIL 43
A-13

BRITISH SOLOMON ISLANDS PROTECTORATE (WESTERN PACIFIC) —

WORLD WAR II CAMPAIGN, POSTAL HISTORY

AMERICAN FORCES (ARMY) WORLD WAR II.



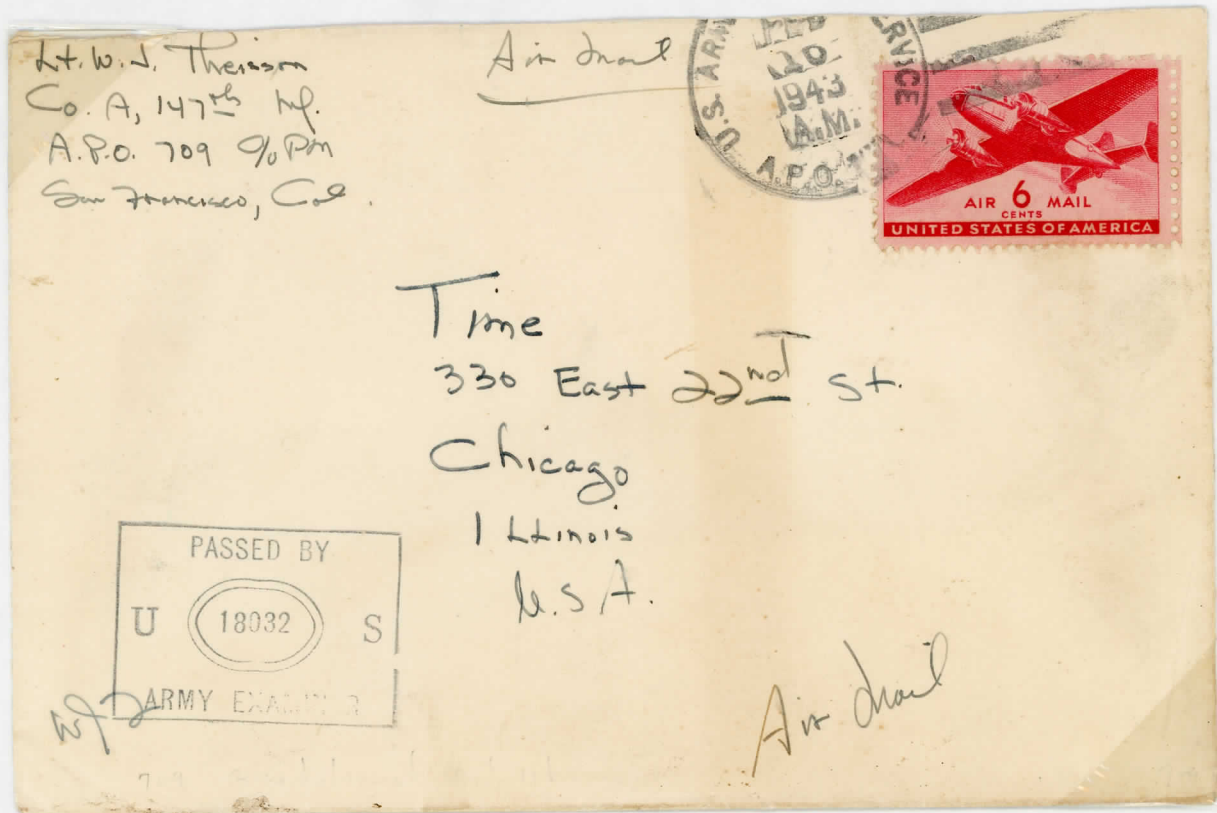
HQ 103. FIELD ARTILLERY BATTALION c/- A.P.O. 709.

CMS JERSEY TYPE A-13, DATED 19 APRIL 1943. THIS CANCEL WAS A REGISTRATION MARKER USED AS A POSTAL CANCELLER AND MAY BE FOUND ON BOTH ARMY, MARINE AND NAVY MAIL DURING DECEMBER 1942. THE CMS WAS ALSO USED INTO 1943.

CMS HAS HANDSTAMP, GIBBORN TYPE 61. AND THE CMS'S SIGNATURE IS THAT OF THE OFFICER WHO WROTE THE LETTER, NOTE IN MANUSCRIPT, "OFFICERS MAIL".

10 FEB 43
A-2

BRITISH SOLOMON ISLANDS PROTECTORATE (WESTERN PACIFIC) —
WORLD WAR II CAMPAIGN, POSTAL HISTORY



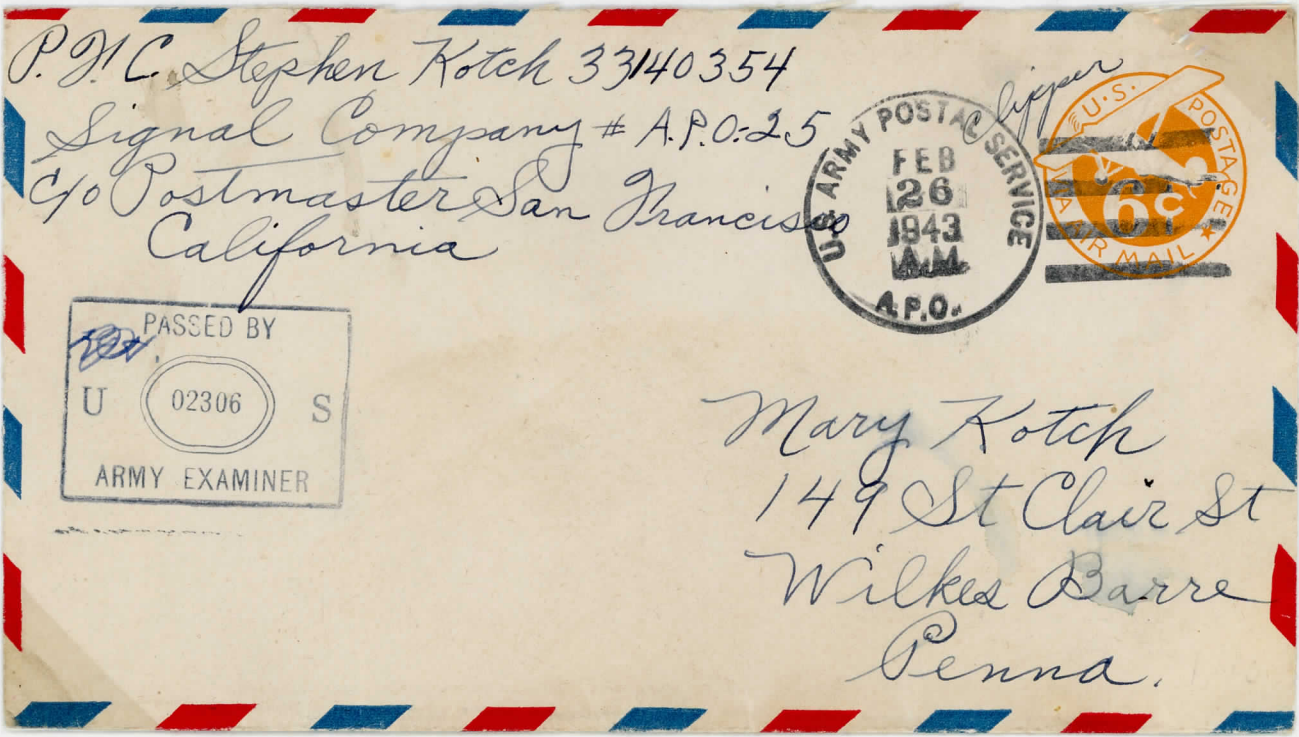
COMPANY "A", 147TH INFANTRY

COVER IS CANCELLED WITH JERSEY A-2 TYPE WHICH IS NOTABLE DUE TO THE FACT THAT THE OUTER RING OF THE CBS IS MISSING IN THE LOWER RIGHT-HAND SEGMENT. THE CANCEL WAS USED ON EARLY MAIL FROM APO 709 AND MAY BE FOUND ON SOME MARINE AND NAVY COVERS DURING JANUARY & FEBRUARY 1943.

APO 709 ON GUADALCANAAL OPERATION AC FROM 13 DECEMBER 1942 UNTIL 30 OCTOBER 1949.

26 FEB 43
A-16

BRITISH SOLOMON ISLANDS PROTECTORATE (WESTERN PACIFIC) —
WORLD WAR II CAMPAIGN, POSTAL HISTORY



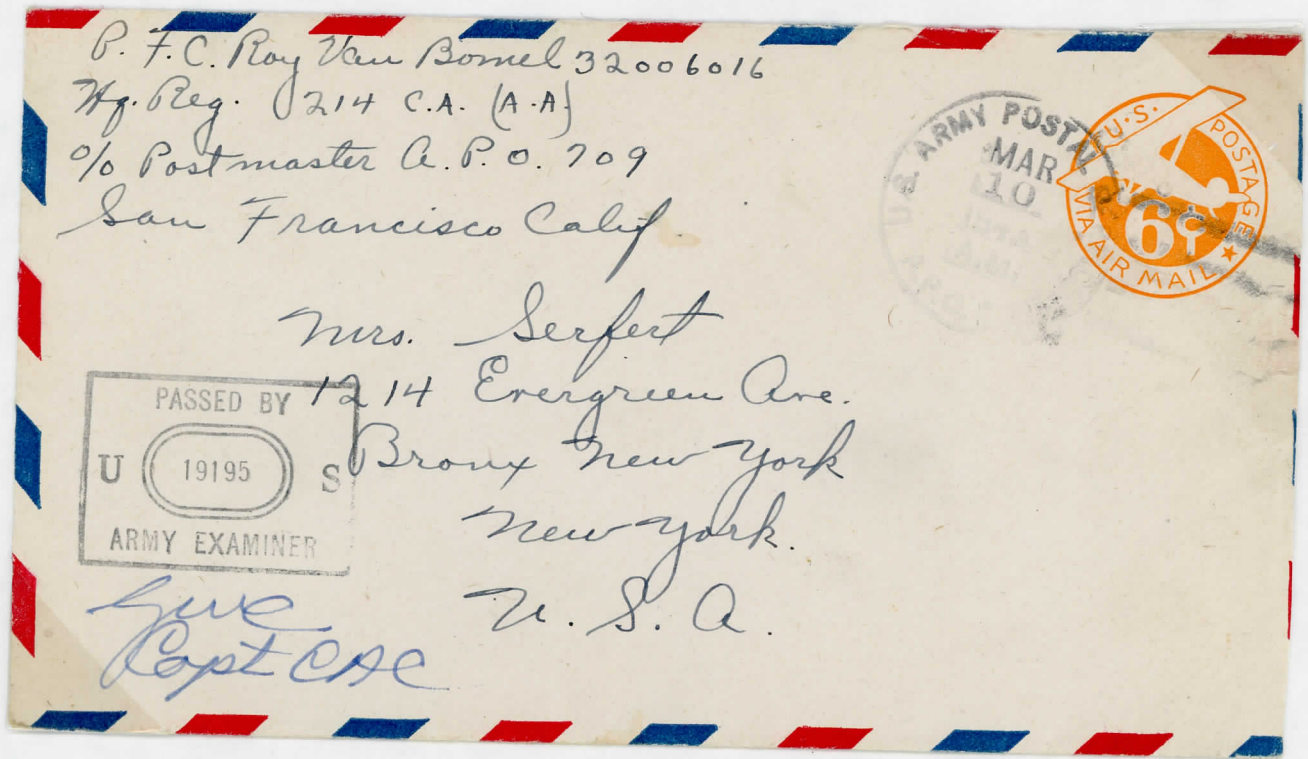
SIGNAL COMPANY, 25 TH INFANTRY DIVISION.

CBS JERSEY TYPE A-16, DATED 26 FEBRUARY 1943

THE DIVISION WAS OPERATIONAL ON ^{GUADALCANAL} ~~NEW GEORGIA~~ FROM
 31 DECEMBER 1942 21 JULY 1943.
~~21 JULY 1943 UNTIL 3 DECEMBER 1943.~~

10 MARCH 43
A-2

BRITISH SOLOMON ISLANDS PROTECTORATE (WESTERN PACIFIC) —
WORLD WAR II CAMPAIGN, POSTAL HISTORY

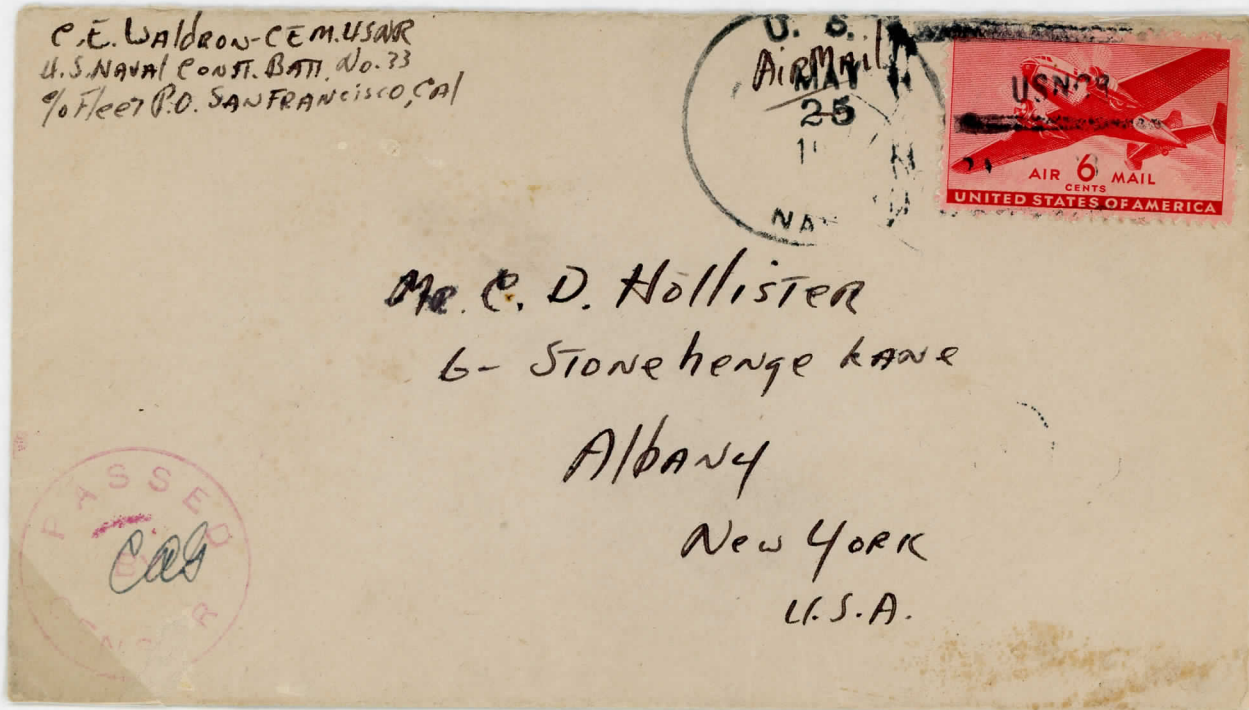


HQ REGIMENT

CAR JERSEY TYPE A-2 DATED 10 MARCH 1943, FROM
 APO 709, OPERATIONAL FROM 13 DECEMBER 1942 UNTIL
 30 OCTOBER 1949.

25 MAY 43
CB-3

BRITISH SOLOMON ISLANDS PROTECTORATE (WESTERN PACIFIC) —
WORLD WAR II CAMPAIGN, POSTAL HISTORY



U.S. NAVAL CONSTRUCTION BATTALION (SEABEES) NO 33.
CAS JERSEY TYPE CB-3, DATED 25 MAY 1943, WITH
OPERATIONAL IN THE PROTECTORATE BETWEEN THE
21 FEBRUARY 1943 AND THE DATE UNKNOWN IN FEBRUARY
1944 ON BANIKA ISLAND IN THE RUSSALS.

10 JULY 43
M15

BRITISH SOLOMON ISLANDS PROTECTORATE (WESTERN PACIFIC) —
WORLD WAR II CAMPAIGN, POSTAL HISTORY



This is a cover from the officer commanding "D" Company 3rd Support Weapons Battalion - Divisional Service Troop - 3rd Marine Division. The Divisional Post Office for the unit was MCPO 1155 with MCPO 575 serving the 3rd Marines and one branch of this Post Office, No. 12883, was assigned to the Service Troops.

The canceller is Jersey type M-15 with "MARINES" between the middle and bottom killer bars. Censor stamp is Gisburn type 59. The cover is additionally stamped with a straight line "VIA AIRMAIL" some 60mm long by 10mm high, applied in violet.

31 AUGUST 43

BRITISH SOLOMON ISLANDS PROTECTORATE (WESTERN PACIFIC) —

WORLD WAR II CAMPAIGN, POSTAL HISTORY

AMERICAN FORCES (ARMY) WORLD WAR II



46TH USNCB, COMPANY "B".

US NAVY CAS UNLISTED, DATED 31 AUGUST 1943, UNIT IN OPERATION ON GOODACCAVAL BETWEEN THE 21 MARCH 1943 AND THE 22 NOVEMBER 1943.

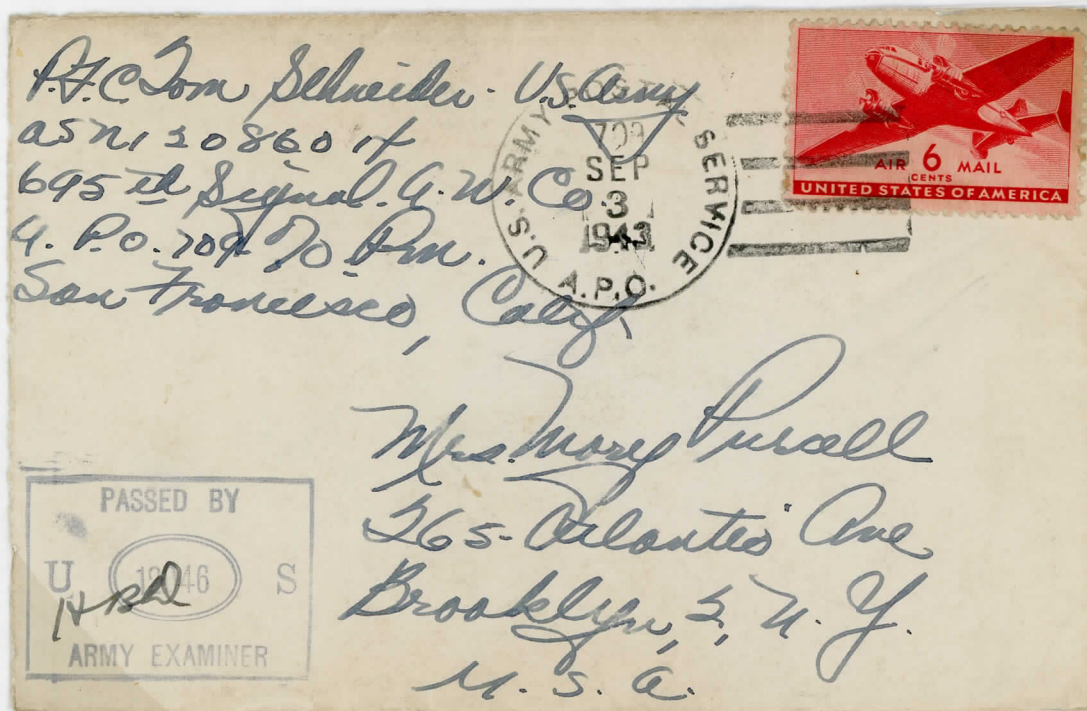
COVER HAS BEEN SENT VIA "SPECIAL DELIVERY" AND AN ADDITIONAL TWO LINED H/S IN RED/VIOLET HAS BEEN APPLIED, AND READS "FEE CLAIMED AT, OKLAHOMA CITY, OKLA."

THE BACK OF THE COVER HAS BEEN BACKSTAMPED WITH A LARGE DOUBLE CIRCLE RECEIVED, 15 SEPT PM, OKLAHOMA CITY, OKLA, SPECIAL DELIVERY CACHERS, IN RED/VIOLET.

3 SEPT 43
A-4

BRITISH SOLOMON ISLANDS PROTECTORATE (WESTERN PACIFIC) —

WORLD WAR II CAMPAIGN, POSTAL HISTORY

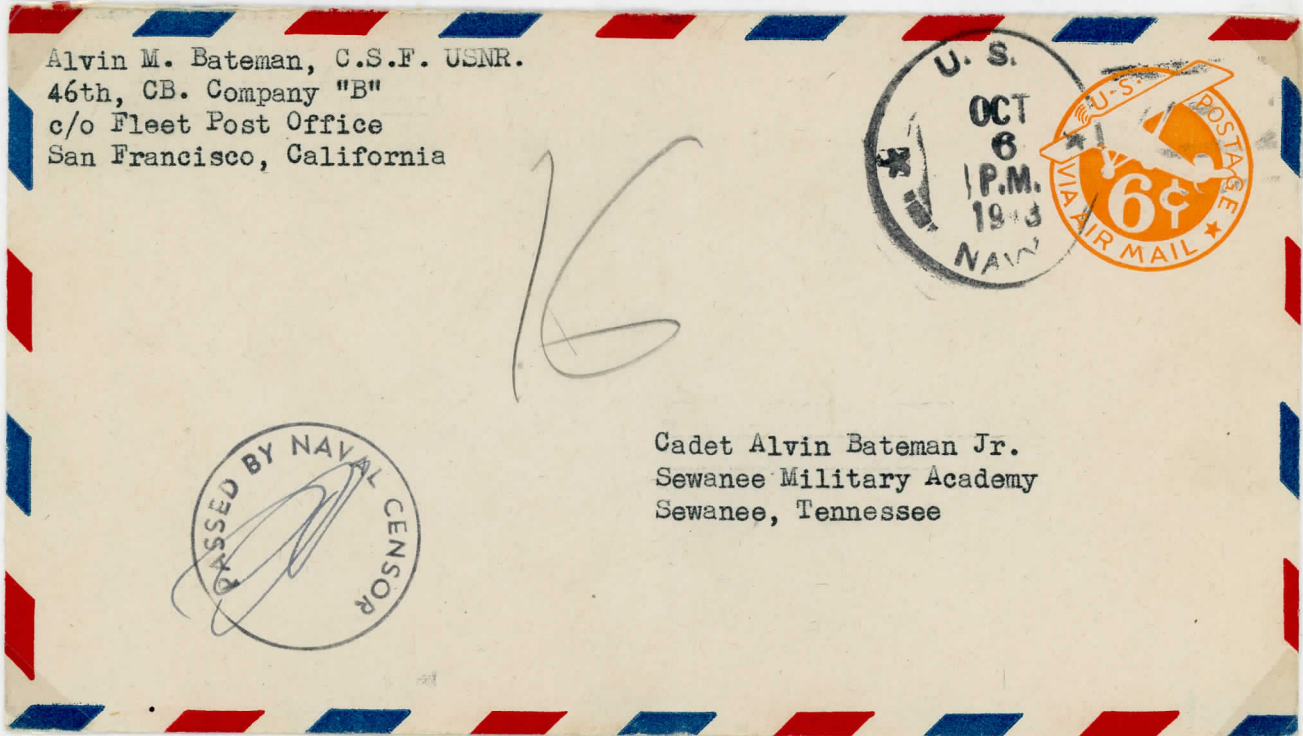


695TH SIGNAL

CMS HERSEY TYPE A-4, IN USE AT APO 709. THIS POST OFFICE WAS OPERATIONAL ON GUADACANAL BETWEEN 13 DECEMBER 1942 AND 30 OCTOBER 1949.

6 oct 43
~~1943~~

BRITISH SOLOMON ISLANDS PROTECTORATE (WESTERN PACIFIC) —
WORLD WAR II CAMPAIGN, POSTAL HISTORY



This is a cover from a member of the 46th Construction Battalion stationed on Guadalcanal between the 21st March 1943 and 22nd November 1943.

The cover has been cancelled with Jersey type ~~N-M~~ ^{UNCANCELLED} OCT 6 1943. The type designation N-M stands for Navy and Marine and was found mainly on Navy and Marine mail, although members of other units used the Unit's Post Office.

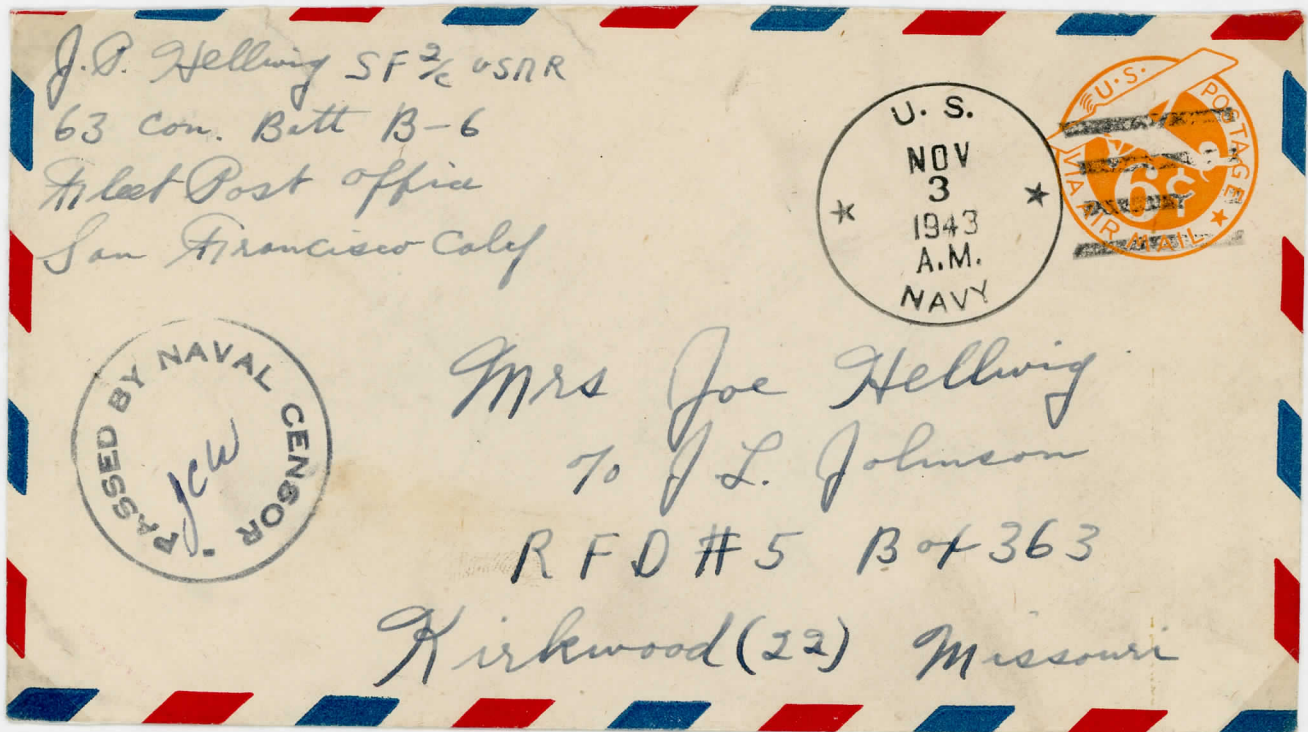
Circular PASSED BY CENSOR mark applied to cover is Gisburn type 59.

| | | | | | | |
|---------------------|-------------|----------|----|---|--------|----|
| 46TH CB 1ST ECHELON | GUADALCANAL | 21 MAR | 43 | - | 16 NOV | 43 |
| 46th CB 2ND ECHELON | GUADALCANAL | 30 APRIL | 43 | - | 22 NOV | 43 |

3 NOV 43

BRITISH SOLOMON ISLANDS PROTECTORATE (WESTERN PACIFIC) —

WORLD WAR II CAMPAIGN, POSTAL HISTORY



The above cover shows the regular Navy date canceller as used by the Construction Battalion, in this case the 63rd. The main difference in all of these covers is in the censors stamp, they being different sizes etc from one unit to another.

Stationed on Guadalcanal from 11 June 1943 until
25 January 1944

9 NOV 43
N-M2

BRITISH SOLOMON ISLANDS PROTECTORATE (WESTERN PACIFIC) —
WORLD WAR II CAMPAIGN, POSTAL HISTORY

REMITTANCE FOR PRIVATE USE TO AVOID
PAYMENT OF POSTAGE, \$300



The Quartermaster,
Headquarters,
U. S. Marine Corps,
Washington, D. C.

OFFICIAL BUSINESS
"G" Co, 2d Bn, 3d Mar.
Fleet Post Office,
San Francisco, Calif.

This is an official cover from "G" Company 2nd Battalion 3rd Marine Division. This Division moved to Guadalcanal, from New Zealand, arriving on the 15th July 1943. The Division was assigned the area of Tetera Beach called the Coconut Grove Camp.

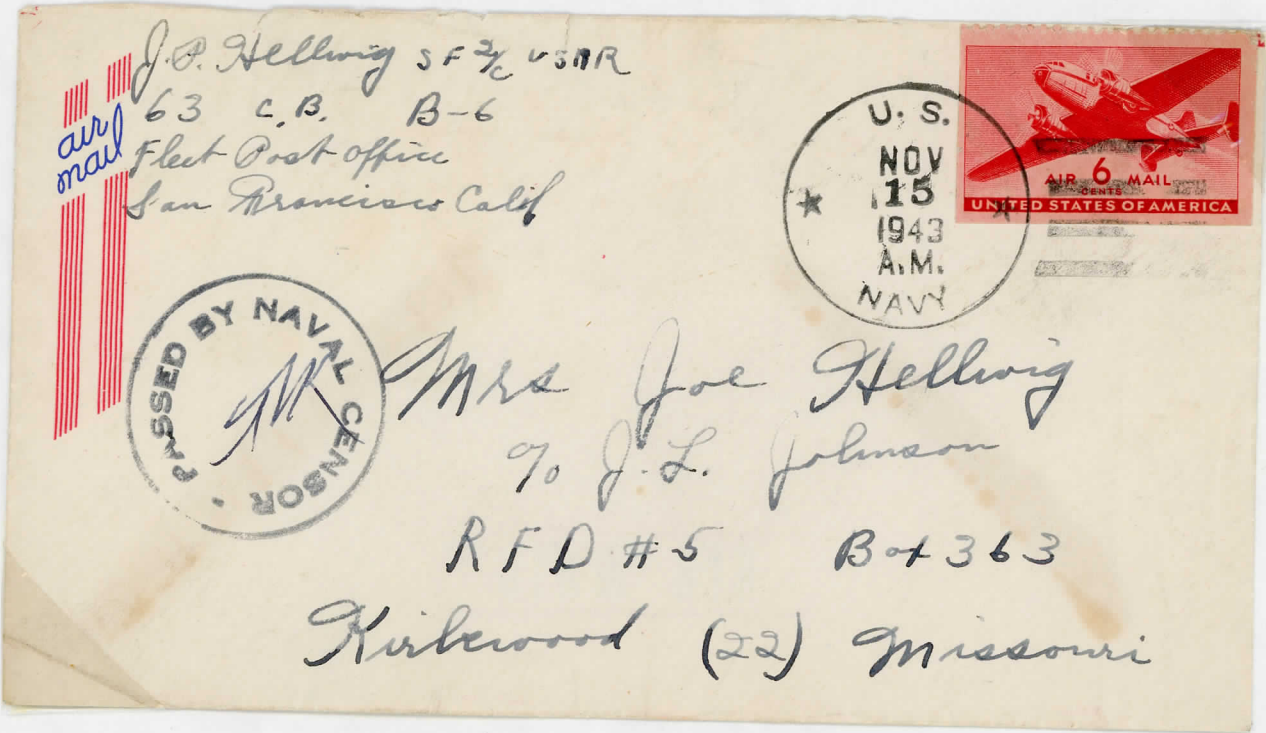
This cover originated on Bougainville as the Division departed from Guadalcanal on the 13th October 1943 and returned in January 1944.

An interesting item is that the assault on Bougainville started only eight days before this cover was postmarked, at dawn on the 1st November 1943.

Postmarker used is Jersey type N-M2.

15 NOV 43

BRITISH SOLOMON ISLANDS PROTECTORATE (WESTERN PACIFIC) —
WORLD WAR II CAMPAIGN, POSTAL HISTORY



USNCB No 63, Company "B-6".

CAS UNLISTED, DATED 15 NOVEMBER 1943

UNIT OPERATIONAL ON GUADALCANAL BETWEEN 11 JUNE 1943
AND 25 JANUARY 1944.

17 NOV 43

BRITISH SOLOMON ISLANDS PROTECTORATE (WESTERN PACIFIC) —

WORLD WAR II CAMPAIGN, POSTAL HISTORY



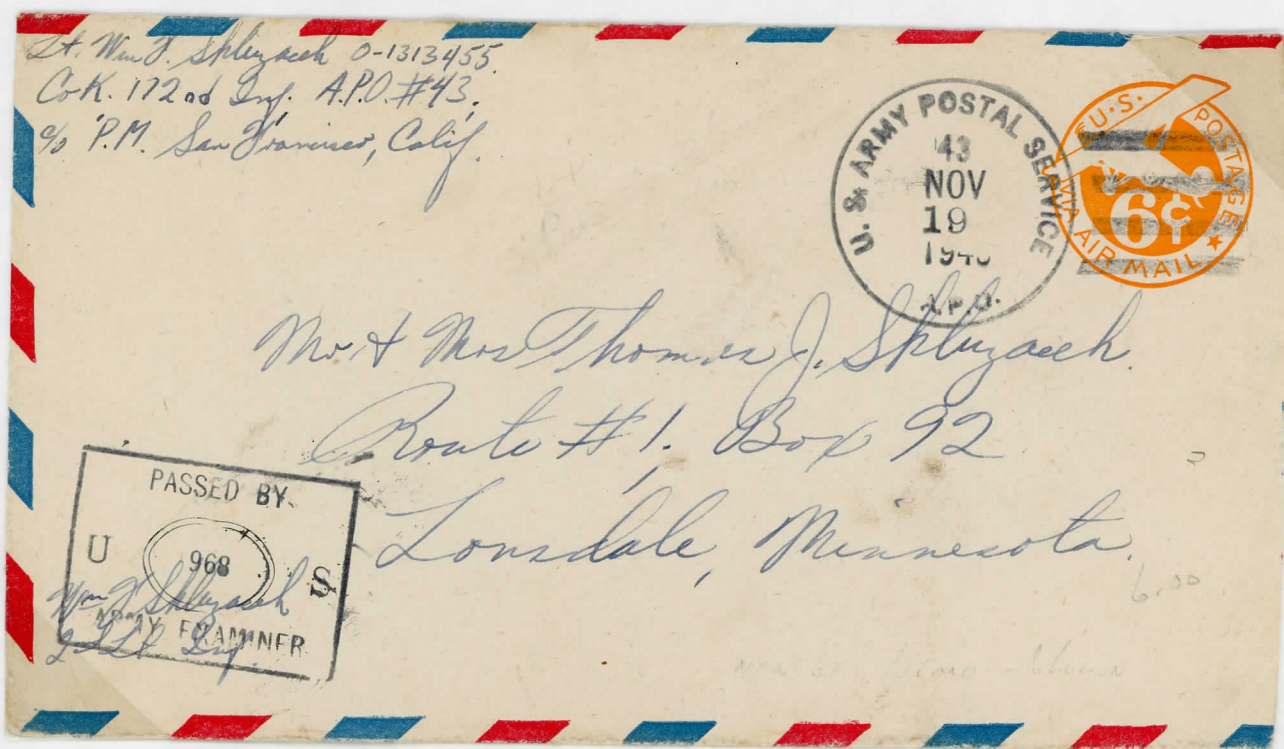
CASU NO 11, 6TH ~~NAVY~~ DIVISION.

CAS UNLISTED, DATED 17 NOVEMBER 1943

UNIT STATIONED ON GADACCAVAL BETWEEN 10 JULY 1943 AND AUGUST 1944.

19 NOV 43
A-20

BRITISH SOLOMON ISLANDS PROTECTORATE (WESTERN PACIFIC) —
WORLD WAR II CAMPAIGN, POSTAL HISTORY



COMPANY "K", 172ND INFANTRY REGIMENT.

THIS UNIT WAS PART OF THE 43RD INFANTRY DIVISION AND WAS OPERATIONAL THROUGHOUT THE SOLOMON'S HAVE SEND SERVICE ON GUADACANAL, RUSSELL ISLANDS, AND NEW GEORGIA.

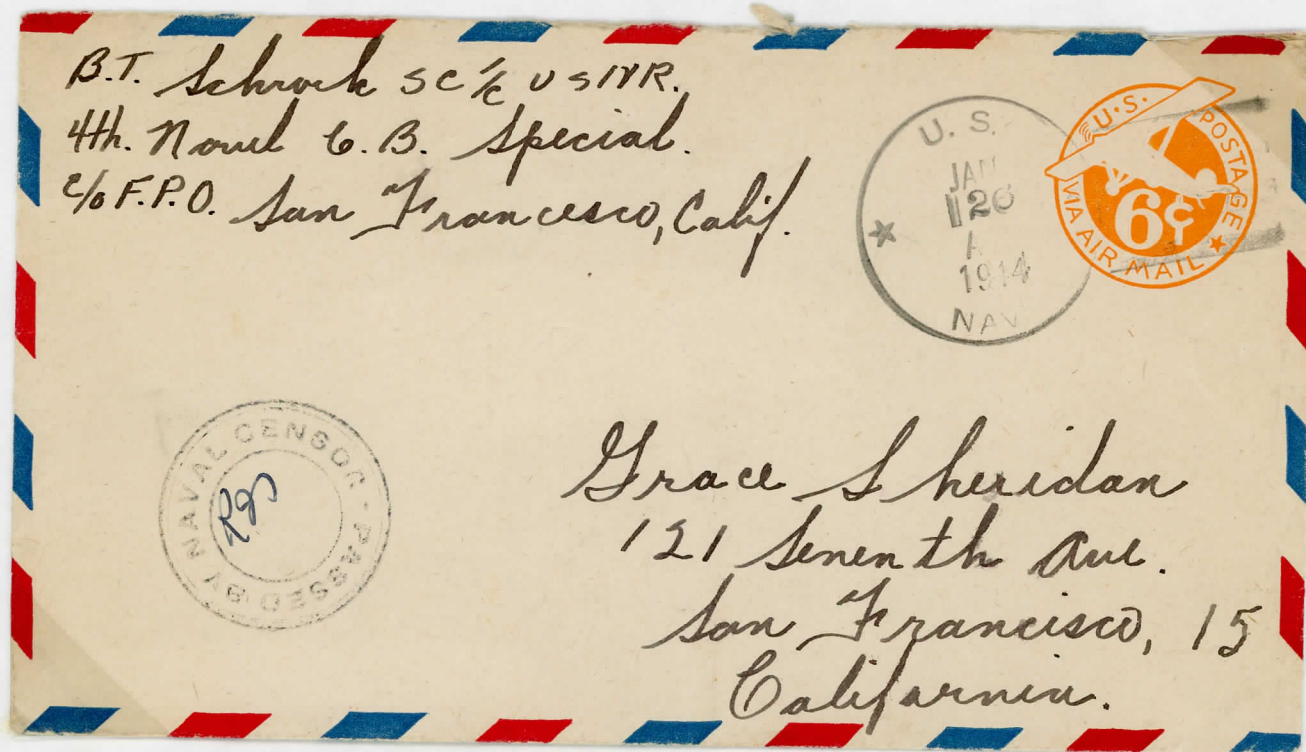
CAS JELSEY TYPE A-20, DATED 19 NOVEMBER 1943

APD 43 STATIONED AT NEW GEORGIA BETWEEN 30 JUNE 1943 AND FEBRUARY 1944.

26 JAN 44

BRITISH SOLOMON ISLANDS PROTECTORATE (WESTERN PACIFIC) —

WORLD WAR II CAMPAIGN, POSTAL HISTORY



USNCS NO 4 (SPECIALS)

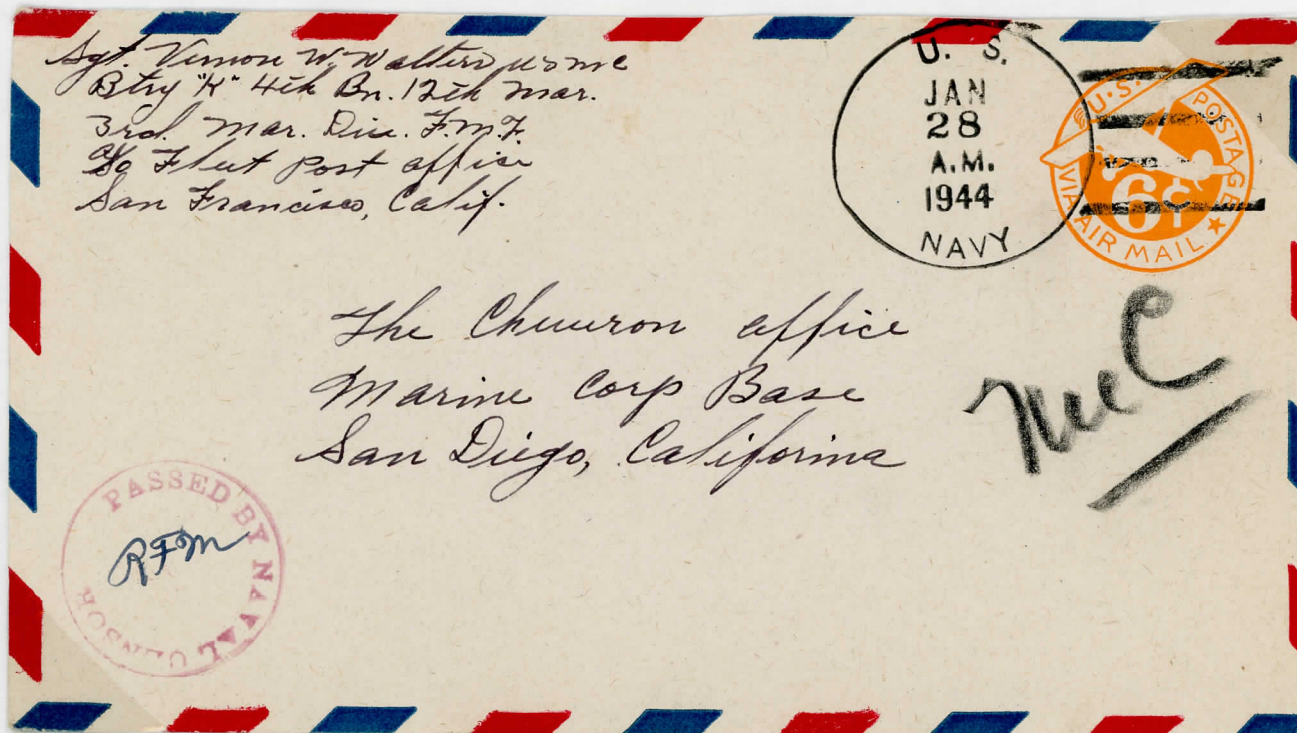
CMS INCISED, DATED 26 JANUARY 1944

THIS UNIT WAS STATIONED ON BUDACCANAL FROM MAY 1943
UNTIL MAY 1944.

28 Jan 44.

BRITISH SOLOMON ISLANDS PROTECTORATE (WESTERN PACIFIC) —

WORLD WAR II CAMPAIGN, POSTAL HISTORY



BATTERY "K", 4TH BATTALION, 12TH MARINES, 3RD MARINE DIVISION, FLEET MARINE FORCE.

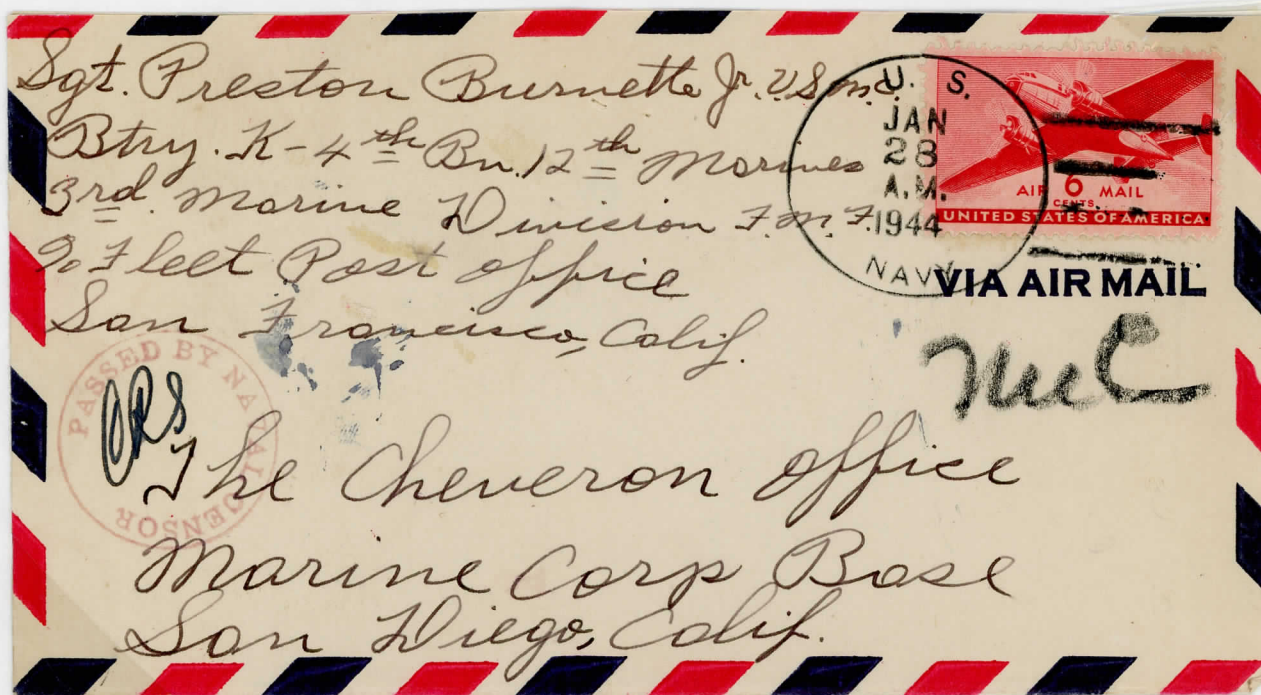
CAS UNLISTED, DATED 28 JANUARY 1944

UNIT OPERATIONAL ON Guadalcanal from 7 January 1944 UNTIL 7 JUNE 1944

28 JAN 44.

BRITISH SOLOMON ISLANDS PROTECTORATE (WESTERN PACIFIC) —

WORLD WAR II CAMPAIGN, POSTAL HISTORY



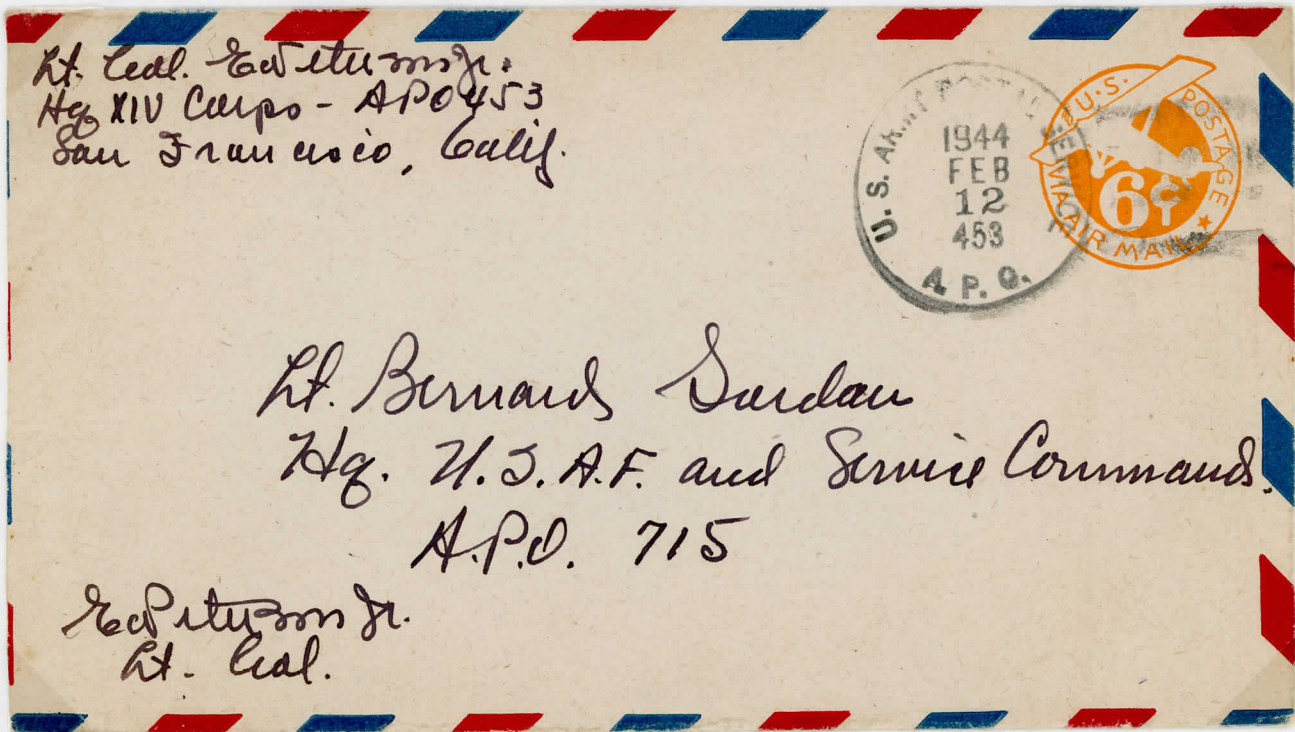
BATTERY "K", 4TH BATTALION, 12TH MARINES, 3RD MARINE DIVISION,
FLEET MARINE FORCE.

CAS INCLISTED, DATED 28 JANUARY 1944.

UNIT OPERATIONAL ON GUADALCANAL BETWEEN 7 JANUARY 1944 AND
7 JUNE 1944.

12 FEB 44
A24

BRITISH SOLOMON ISLANDS PROTECTORATE (WESTERN PACIFIC) —
WORLD WAR II CAMPAIGN, POSTAL HISTORY



A 1944 Cover written by Lt Col E. Peterson at the Headquarters of the XIV Corps c/o APO 453 which unit was stationed at Cape Torokina on Bougainville from January 1944 until January 1945.

War Department Orders of the 28th September 1943 established a table of organisation of one officer and eleven enlisted men to operate APO 453. It was first activated in accordance with these Orders on New Georgia Island on the 20th October 1943.

The date canceller used is Jersey type A-24 and the Cover is self-censored in manuscript by the writer.

8 MARCH 44
A-11

BRITISH SOLOMON ISLANDS PROTECTORATE (WESTERN PACIFIC) —
WORLD WAR II CAMPAIGN, POSTAL HISTORY



COMPANY "D", 169TH INFANTRY REGIMENT. THIS UNIT OPERATED WITH THE 43RD INFANTRY DIVISION.

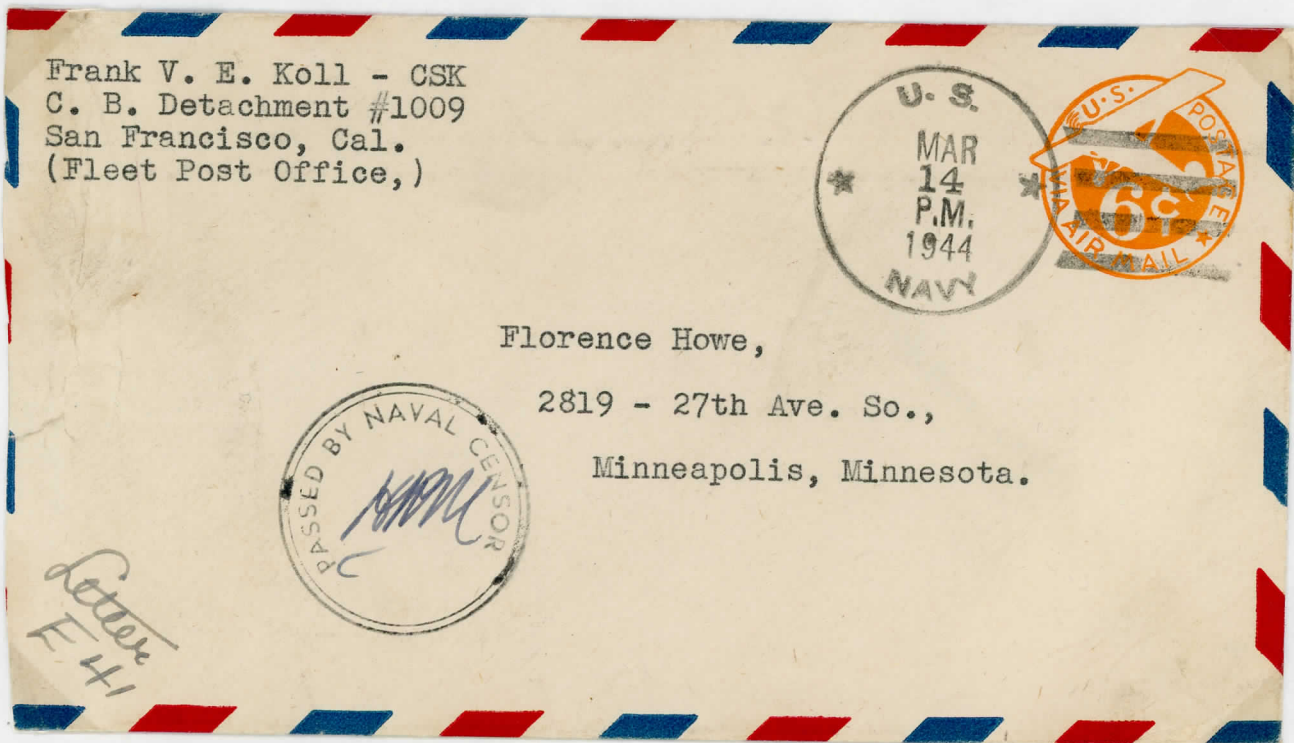
CBS LESNEY TYPE A-11, MACHINE CANCEL IN USE AT APO 709 IN OPERATION ON Guadalcanal BETWEEN 13 DECEMBER 1942 UNTIL 30 OCTOBER 1943.

14 MAR 44

BRITISH SOLOMON ISLANDS PROTECTORATE (WESTERN PACIFIC) —
WORLD WAR II CAMPAIGN, POSTAL HISTORY

This cover is from a member of the Construction Battalion Detachment Number 1009. This small unit was stationed on Pavuvu Island in the Russell Group and was the construction unit prior to the 19th Construction Battalion being stationed there on the 12th May 1944.

The nickname for these units was apparently the "Seabees" which was taken from the abbreviated version "C.B."



Each U.S. Construction Battalion had and operated its own Post Office which, unlike other armed forces post offices, was a military branch of the New York, N.Y., Post Office, administered through the Mail Division, Office of the Vice Chief of Naval Operations.

The Censor mark was applied by the Unit's censoring officer.

NAVAL CONSTRUCTION BATTALION DETACHMENT NO 1009
STATIONED AT RUSSELL ISLANDS 22 SEPTEMBER 1943
TILL 22 JUNE 1945.

2 APRIL 44

BRITISH SOLOMON ISLANDS PROTECTORATE (WESTERN PACIFIC) —

WORLD WAR II CAMPAIGN, POSTAL HISTORY



USNCS NO 82, COMPANY "B", PLATOON, No. 6.

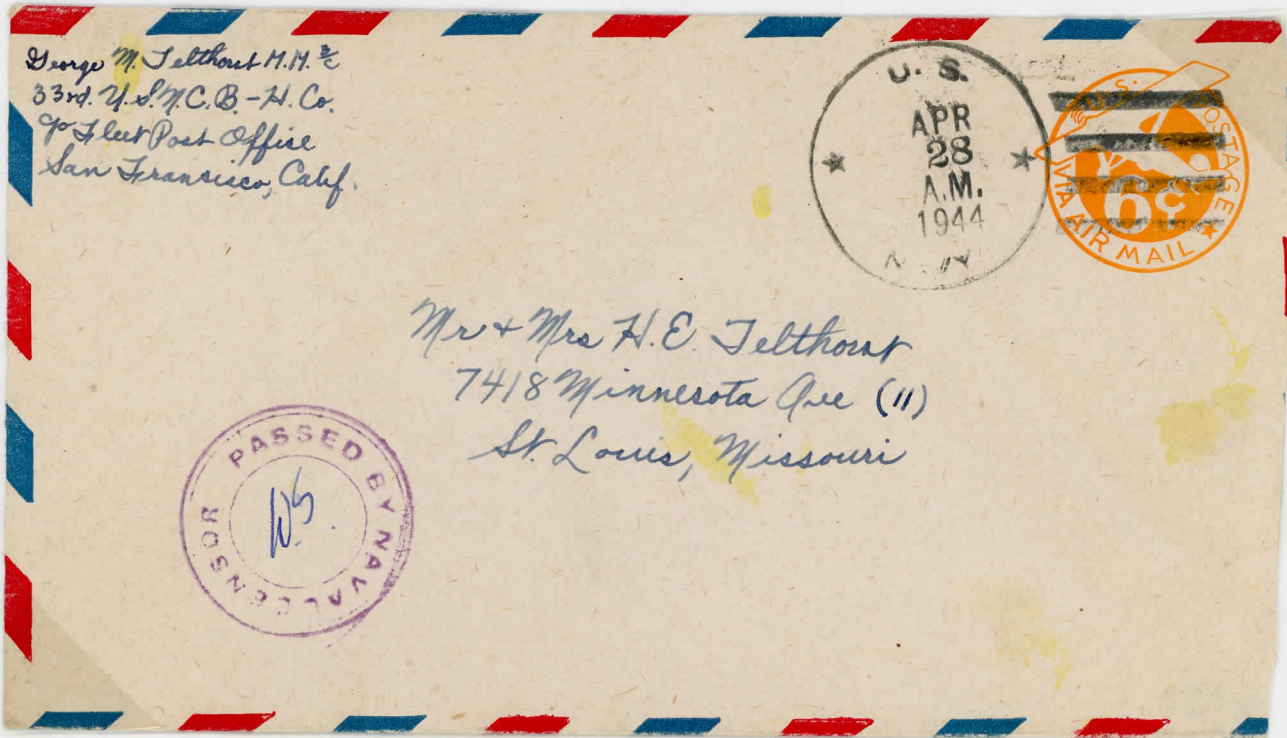
CMS UNLISTED, DATED 20 APRIL 1944.

UNIT STATIONED AT THE TREASURY ISLANDS FROM 10 DECEMBER
1943 UNTIL 25 AUGUST 1944.

28 APRIL 44.

BRITISH SOLOMON ISLANDS PROTECTORATE (WESTERN PACIFIC) —

WORLD WAR II CAMPAIGN, POSTAL HISTORY



U.S.N.C.B. 33rd, "H" COMPANY.

COS LISTED, DATED 28 APRIL 1944.

UNIT STATIONED AT GREEN ISLANDS FROM 15 MARCH 1944 UNTIL
JULY/AUGUST 1944.

7 MAY 44
A 11

BRITISH SOLOMON ISLANDS PROTECTORATE (WESTERN PACIFIC) —
WORLD WAR II CAMPAIGN, POSTAL HISTORY



A 1944 Cover from a serviceman serving in the 1393rd Construction Engineers' Battalion who has used APO 709 as his return address. The cancellation (Jersey type A-11) is of a type used in the hand cancelling machine in use from 24th November 1943 due to the heavy workload of mail. The censor stamp applied is Gisburn type 61.

8 MAY 44.

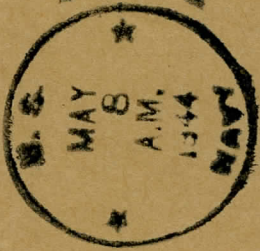
BRITISH SOLOMON ISLANDS PROTECTORATE (WESTERN PACIFIC) —

WORLD WAR II CAMPAIGN, POSTAL HISTORY

2ND MARINES (REINFORCED), 1ST
PROVISIONAL MARINE BRIGADE.
CBS DELIVERED, MAY 8 1944.

OPERATIONAL ON Guadalcanal
BETWEEN 21 MARCH 1944 UNTIL
1/4 JUNE 1944.

PENALTY FOR PRIVATE USE TO AVOID
PAYMENT OF POSTAGE, \$300



The Quartermaster
(Property Accounting Division)
Headquarters, U. S. Marine Corps
Washington, D. C.

NAVY DEPARTMENT
Office of Regimental Exchange Officer,
22d Marines (Rein), 1st ProvMarBrig
c/o FPO, San Francisco, California
OFFICIAL BUSINESS

8 MAY 44.

BRITISH SOLOMON ISLANDS PROTECTORATE (WESTERN PACIFIC) —

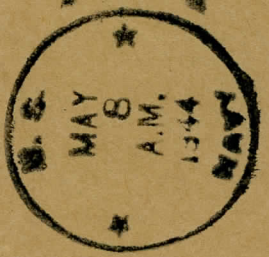
WORLD WAR II CAMPAIGN, POSTAL HISTORY

22ND MARINES (REINFORCED), 1ST
PROVISIONAL MARINE BRIGADE.

CBS DELIVERED, MAY 8 MAY 1944.

OPERATIONAL ON Guadalcanal
BETWEEN 21 MARCH 1944 UNTIL
1/4 JUNE 1944.

PENALTY FOR PRIVATE USE TO AVOID
PAYMENT OF POSTAGE, \$300



The Quartermaster
(Property Accounting Division)
Headquarters, U. S. Marine Corps
Washington, D. C.

NAVY DEPARTMENT
Office of Regimental Exchange Officer,
22d Marines (Rein), 1st Provisional Marine
Brigade
c/o FPO, San Francisco, California
OFFICIAL BUSINESS

8MAY 44
N-M2

BRITISH SOLOMON ISLANDS PROTECTORATE (WESTERN PACIFIC) —
WORLD WAR II CAMPAIGN, POSTAL HISTORY



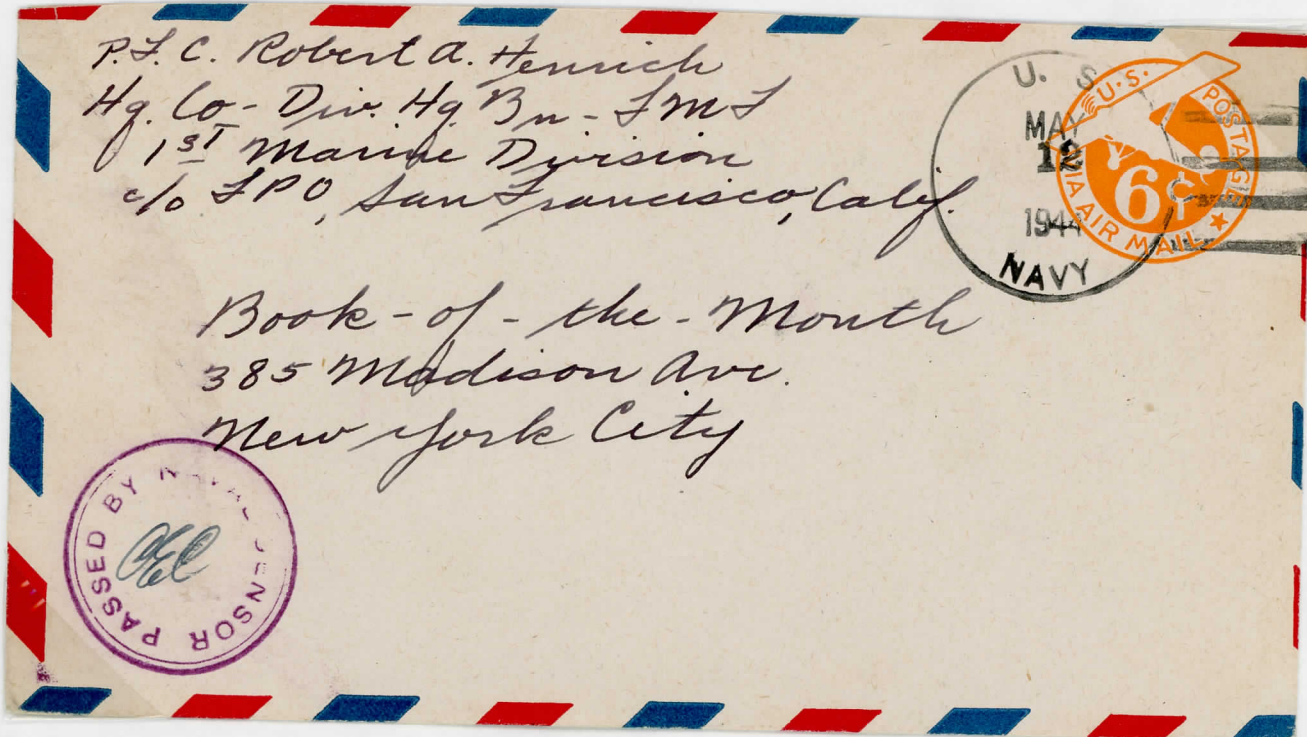
This cover is from the Coxswain of the Carrier Aircraft Service Unit (C.A.S.U. 11 6th Division), operating on Guadalcanal between the 10th July 1943 and August 1944. The postmarker, Jersey type N-M2, is found on both Navy and Marine mail, and operated from the vicinity of Henderson Field.

The censor's mark is the Unit's own censoring official stamp applied in black.

12 MAY 44.

BRITISH SOLOMON ISLANDS PROTECTORATE (WESTERN PACIFIC) —

WORLD WAR II CAMPAIGN, POSTAL HISTORY



HQ COMPANY, DIVISIONAL HQ BATTALION, FIRST MARINE FORCE,
1ST MARINE DIVISION.

CBS DELISTED, DATED 12 MAY 1944. UNIT STATIONED AT
PAVUVU, RUSSELL ISLANDS FROM 28 APRIL 1944 UNTIL 8
SEPTEMBER 1944.

2 June 44

BRITISH SOLOMON ISLANDS PROTECTORATE (WESTERN PACIFIC) —

WORLD WAR II CAMPAIGN, POSTAL HISTORY



ORDNANCE COMPANY, 4TH BASE DEPOT, MARINE SUPPLY ^{AND} SERVICES
5TH AMPHIBIOUS CORPS.

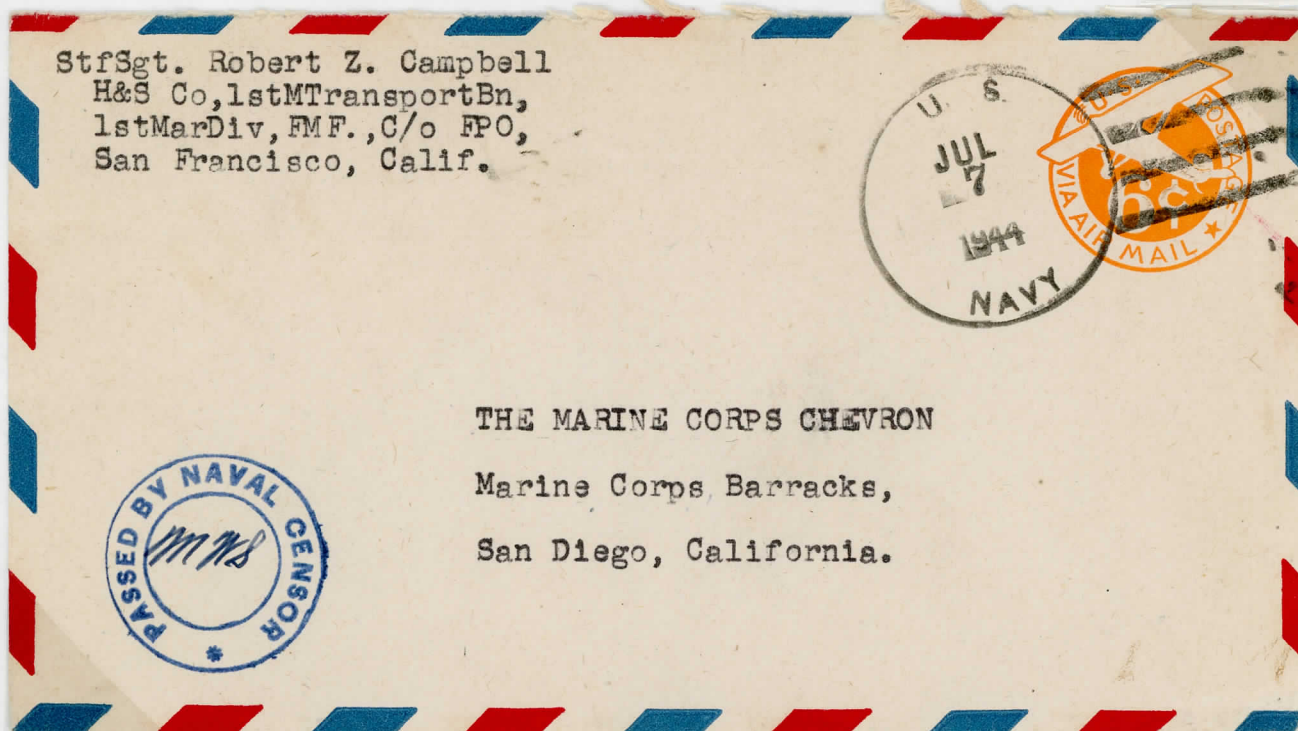
CAR LISTED, DATED 2 JUNE 1944.

4TH BASE DEPOT WAS OPERATIONAL AT BANIKA IN THE RUSSELLS
FROM 17 JUNE 1943 UNTIL DISBANDED ON 30 NOVEMBER 1945.

7 July 44

BRITISH SOLOMON ISLANDS PROTECTORATE (WESTERN PACIFIC) —

WORLD WAR II CAMPAIGN, POSTAL HISTORY



HEADQUARTERS AND SERVICE COMPANY, 1ST MOTOR TRANSPORT BATTALION,
1ST MARINE DIVISION, FLEET MARINE FORCE.

CMS INDICATED, DATED 7 JULY 1944.

THIS UNIT WAS STATIONED AT PAUVUN, RUSSELL ISLANDS
FROM 5 MAY 1944 UNTIL 8 SEPTEMBER 1944.

BRITISH SOLOMON ISLANDS PROTECTORATE (WESTERN PACIFIC) —
WORLD WAR II CAMPAIGN, POSTAL HISTORY



WEAPONS COMPANY, 7TH MARINES, 1ST MARINE DIVISION, FLEET
MARINE FORCE.

CAS LISTED, DATED 12 JULY 1944.

THE 1ST MARINES WERE STATIONED AT PAVUVU, RUSSELL ISLANDS
FROM 5 MAY 1944 UNTIL 8 SEPTEMBER 1944.

31 July 44

BRITISH SOLOMON ISLANDS PROTECTORATE (WESTERN PACIFIC) —
WORLD WAR II CAMPAIGN, POSTAL HISTORY

WO, M. W. SCHNEIDER
H&S Co, 1st M Trans Bn,
1st Marine Div, FMF.
c/o FPO, San Francisco, Cal.



MARINE CORPS CHEVRON
U.S. MARINE BASE,
SAN DIEGO, CAL.



HEADQUARTERS AND SERVICE COMPANY, 1ST MOTOR TRANSPORT BATTALION,
1ST MARINE DIVISION, 1ST MARINE FORCE.

CMS UNLISTED, DATED 31 JULY 1944.

THIS UNIT WAS STATIONED AT RAVUVU, RUSSELL ISLANDS
FROM 5 MAY 1944 UNTIL 8 SEPTEMBER 1944.

7 AUG 1944
A-10

BRITISH SOLOMON ISLANDS PROTECTORATE (WESTERN PACIFIC) —
WORLD WAR II CAMPAIGN, POSTAL HISTORY



842ND ORDINANCE COMPANY DEPOT.

CHR SELLEY TYPE A-10, DATED 7 AUGUST 1944.

APO 709 STATIONED ON GILASACCAVE FROM THE 13 DECEMBER
1942 UNTIL 30 OCTOBER 1949.

18 AUGUST 44
A-8

BRITISH SOLOMON ISLANDS PROTECTORATE (WESTERN PACIFIC) —
WORLD WAR II CAMPAIGN, POSTAL HISTORY



7TH TACTICAL AIR COMMAND SQUADRON.

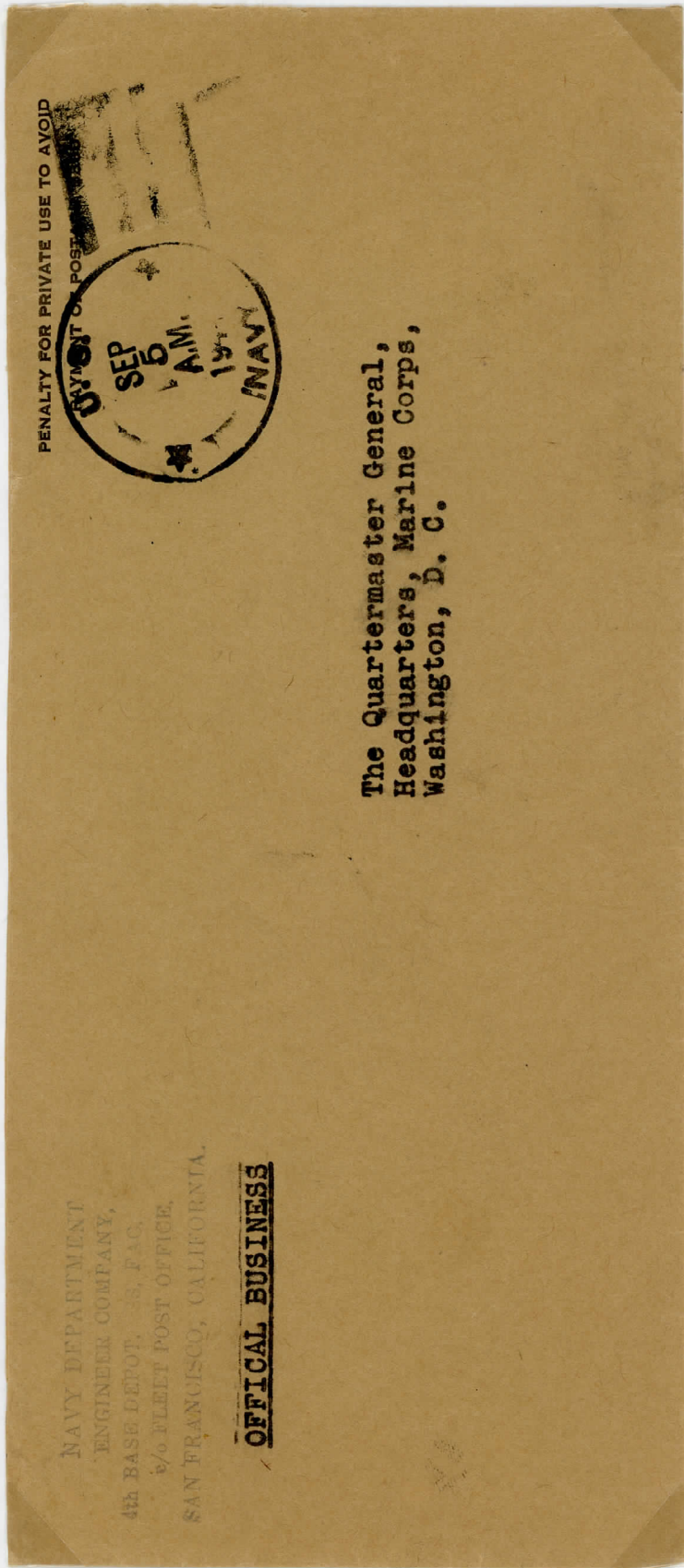
CDS LETTER TYPE A-8, DATED 18 AUGUST 1944.

APO 709 STATIONED AT GHADACCAH ALI FROM 13 DECEMBER
1942 UNTIL 30 OCTOBER 1949.

5 SEPT 44

BRITISH SOLOMON ISLANDS PROTECTORATE (WESTERN PACIFIC) —

WORLD WAR II CAMPAIGN, POSTAL HISTORY



The Quartermaster General,
 Headquarters, Marine Corps,
 Washington, D. C.

Official Cover from the 4th Base Depot stationed at Banika Island in the Russell Group. This base depot was serviced by branch 12994 of the New York Post Office but did not always use the canceller issued. The one shown here is thought to be a spare one used on occasions when the main canceller was out of use for some reason.

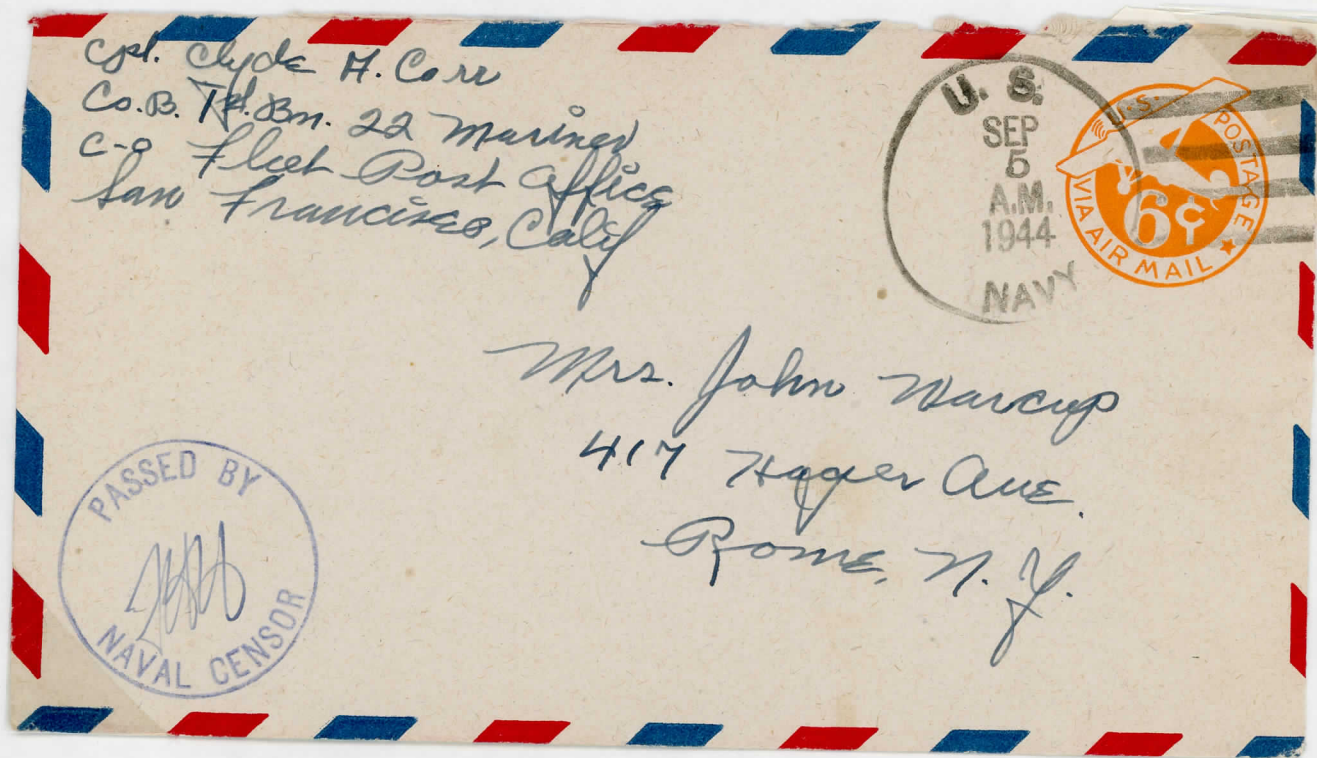
BANIKA, RUSSELL ISLANDS
 6 JULY 1943 TILL 25 SEPTEMBER
 1945.

BR NO 12994

BR MEANS U.S. NAVAL
 POST OFFICE "BRANCH NUMBERS"

BRITISH SOLOMON ISLANDS PROTECTORATE (WESTERN PACIFIC) —

WORLD WAR II CAMPAIGN, POSTAL HISTORY



COMPANY "B", 1ST BATTALION, 22ND MARINES, 6TH MARINE DIVISION.

CMS UNLISTED, DATED 5 SEPTEMBER 1944.

THIS UNIT AS PART OF AN ORGANIC UNIT OF THE 6TH MARINE DIVISION RETURNED TO GUADALCANAL IN EARLY SEPTEMBER 1944 AND REMAINED UNTIL 15 MARCH 1945.

15 Oct 44

BRITISH SOLOMON ISLANDS PROTECTORATE (WESTERN PACIFIC) —

WORLD WAR II CAMPAIGN, POSTAL HISTORY



A cover from a member of the U.S. Navy with the sender's address listed as A.N.B. (Advanced Naval Base) 250 c/o Fleet Post Office, San Francisco. This Naval Base was established at Munda Point on the island of New Georgia on the 30th June 1943 until 6th September 1945. Both the date stamp and censor mark are thought to be from the Post Office attached to the base and are, as yet, untyped.

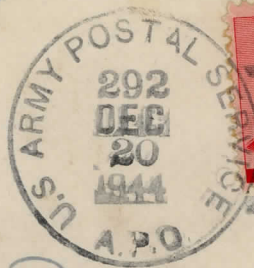
20 Dec 44

A-23

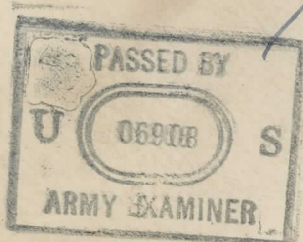
BRITISH SOLOMON ISLANDS PROTECTORATE (WESTERN PACIFIC) —

WORLD WAR II CAMPAIGN, POSTAL HISTORY

Pvt. Robert Straka 36757227
28th Special Service Co.
APO 292, 40 Postmaster
San Francisco, Calif.



Mr. + Mrs. James Straka
1531 So. 58th St.
Cicero 50, Illinois



28TH SPECIAL SERVICE COMPANY.

CDS KESBY TYPE A-23, DATED 20 DECEMBER 1944

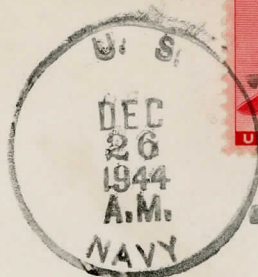
APO 292 WAS ESTABLISHED IN THE RUSSELL ISLANDS FOR THE
USE BY ARMY FORCES, WITH THE EXCEPTION OF DIVISIONAL
UNITS IN THE RUSSELLS.

APO WAS OPENED ON THE 15 MARCH 1944 AND CLOSED ON THE
8 FEBRUARY 1946.

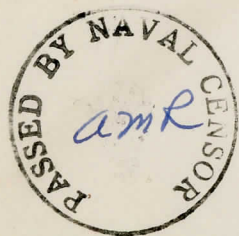
26 Dec 44

BRITISH SOLOMON ISLANDS PROTECTORATE (WESTERN PACIFIC) —
WORLD WAR II CAMPAIGN, POSTAL HISTORY

SUP/SGT. J. LEWSHENIA, U.S.M.C.R.,
SIXTH JASCO
SIXTH MARINE DIVISION
C/O F.P.O., SAN FRANCISCO, CALIF.



VIA AIR MAIL



MISS AGNES G. BROEKER,
2346 FOSTER AVENUE
CHICAGO 25, ILLINOIS.

SIXTH JASCO (JOINT ASSISTANT SIGNAL COMPANY) 6TH MARINE
DIVISION. (FORMERLY THE 1ST PROVISIONAL MARINE BRIGADE).
CDS UNLISTED, DATED 26 DECEMBER 1944.

UNIT STATIONED ON Guadalcanal FROM 7 SEPTEMBER 1944
UNTIL 15 MARCH 1945.

7 MAY 45

BRITISH SOLOMON ISLANDS PROTECTORATE (WESTERN PACIFIC) —
WORLD WAR II CAMPAIGN, POSTAL HISTORY



CONSTRUCTION BATTALION MAINTENANCE UNIT NO 501 (CBMU).

CAS LISTS, DATED 7 MAY 1945.

UNIT STATIONED AT RUSSELL ISLANDS, BANIKA, FROM OCTOBER 1944
UNTIL JULY 1945.

C-39

5 JUNE 45

BRITISH SOLOMON ISLANDS PROTECTORATE (WESTERN PACIFIC) —
WORLD WAR II CAMPAIGN, POSTAL HISTORY



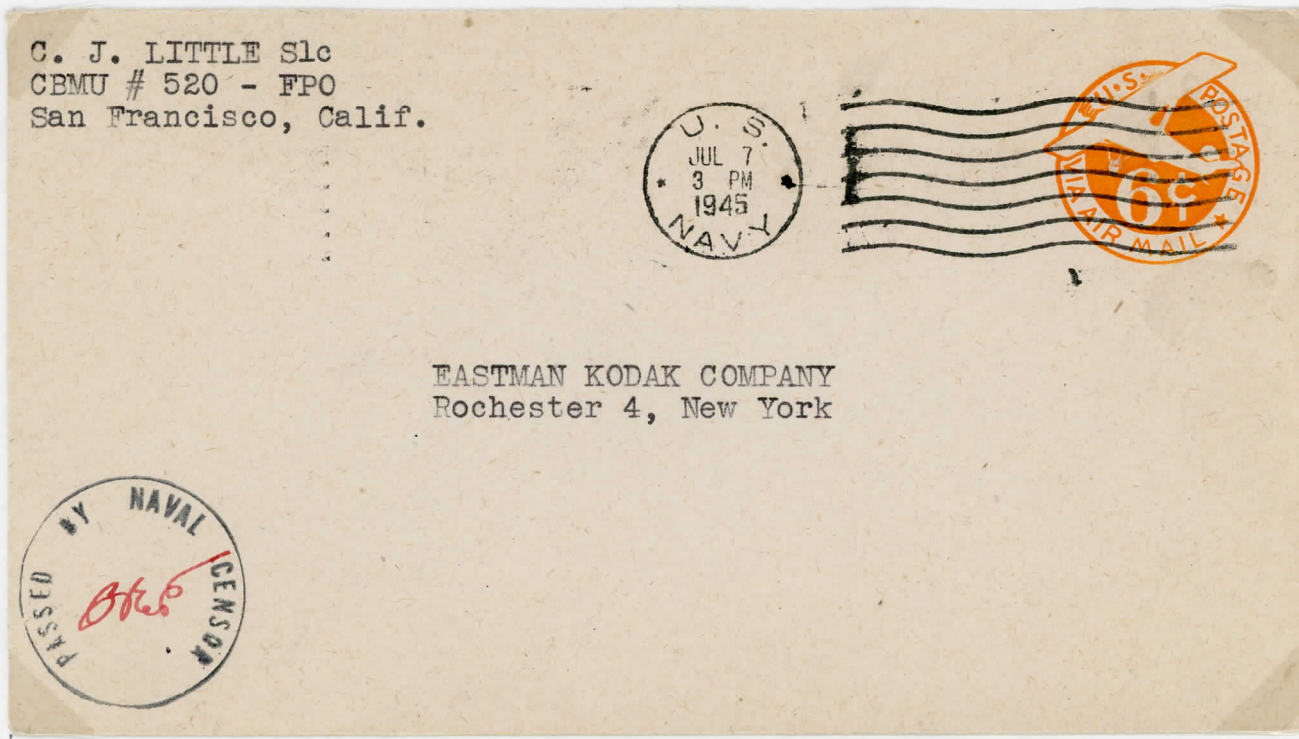
This is a Cover from a member of the 501st C.B.M.U. (Construction Battalion Maintenance Unit). This unit was stationed not only on Guadalcanal but also in the Russell Islands. C.B.M.U. were activated after the departure of the regular construction battalions and the problem of maintenance at the various naval bases arose. Again each unit was issued with its own cancelling date stamp, in this case a machine one, and its own individual censoring stamp.

BANIKI, RUSSELL ISLANDS FROM OCTOBER 1944 TO JULY 1945

C 41

7 JULY 45

BRITISH SOLOMON ISLANDS PROTECTORATE (WESTERN PACIFIC) —
WORLD WAR II CAMPAIGN, POSTAL HISTORY

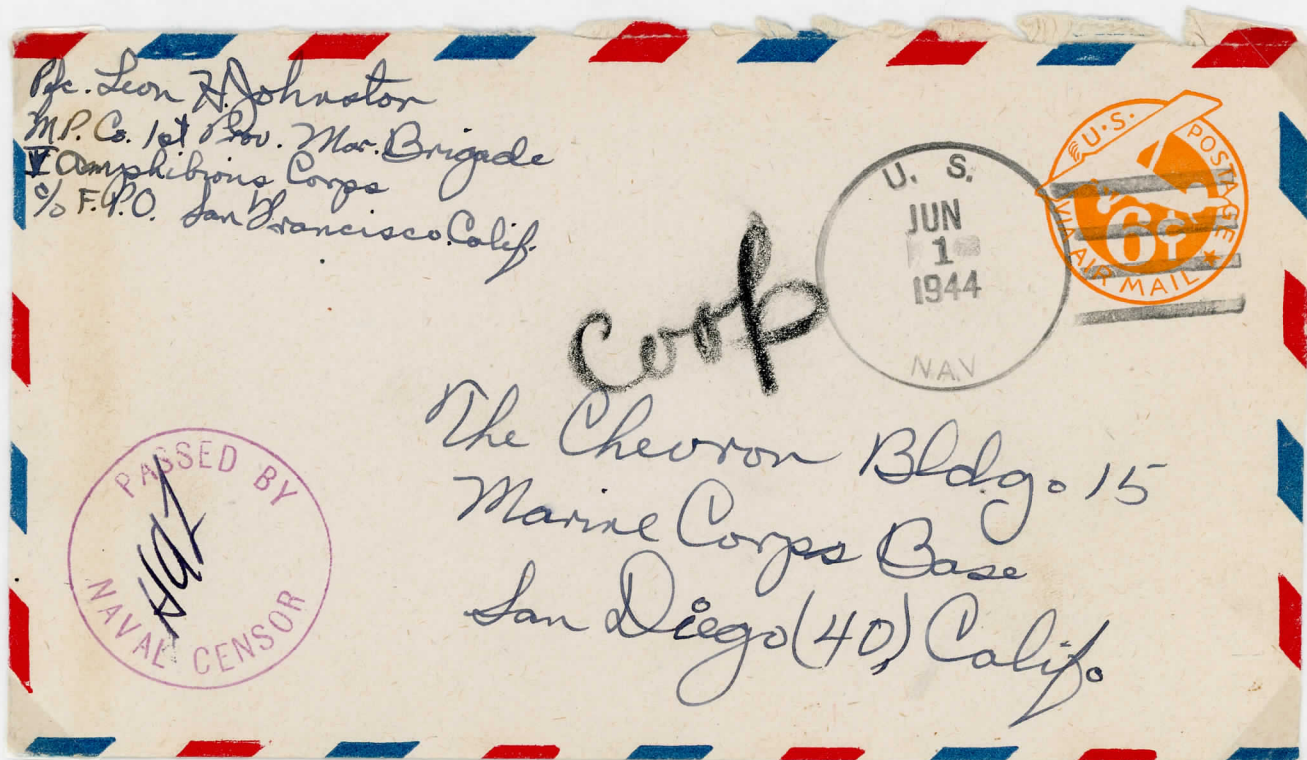


A further Cover from a member of the C.B.M.U., this one the 520th. The unit was stationed on Guadalcanal from September 1943 until late in 1946. Here again a machine cancellation has been used in conjunction with the unit's own individual censor stamp.

Guadalcanal from 10 FEBRUARY 1944 TILL AUGUST 1945.

1 JUN 44

BRITISH SOLOMON ISLANDS PROTECTORATE (WESTERN PACIFIC) —
WORLD WAR II CAMPAIGN, POSTAL HISTORY



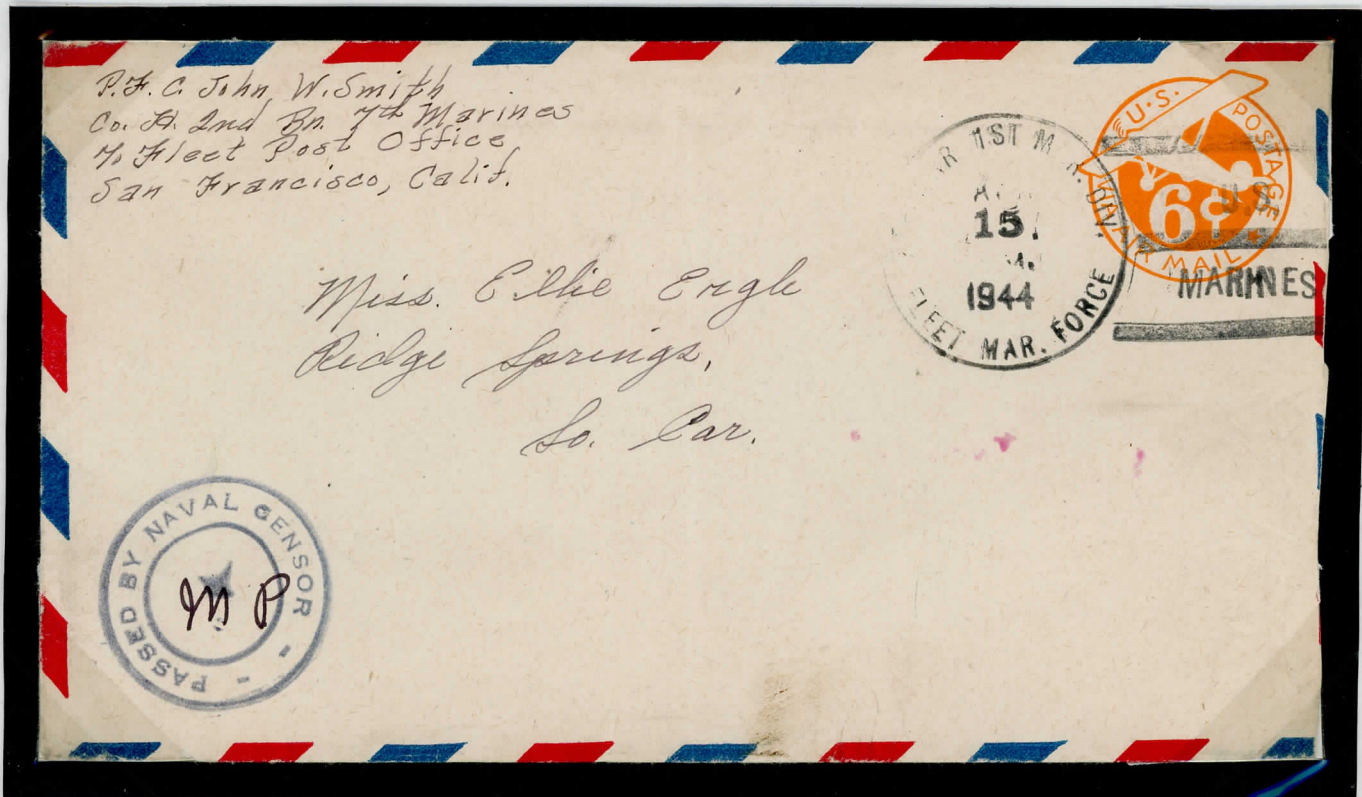
This Cover, from a member of the 1st Provisional Marine Brigade, is interesting in that this Unit was formed from two veteran reinforced regiments, the 4th and the 22nd, under the command of Brigadier General Lemuel C. Shepherd Jr U.S.M.C.. The Brigade was formed up of Raider Battalions, or Regiments, to carry the war to many of the Japanese held Islands in the Pacific.

The postal history of the 1st Brigade is very hazy and it is known that a post office marker was assigned to the Brigade but was not used. Further, no Marine Mail Clerks were assigned.

Both the postmarker, with four killer bars, and the censor stamp are particular to this unit and both, as yet, are untyped.

BRITISH SOLOMON ISLANDS PROTECTORATE

UNITED STATES FORCES (MARINES) WORLD WAR II



This is a cover from a member of the 2nd Battalion 7th Marines stationed at Pavuvu Island in the Russell Group between the 3rd May 1944 and the 8th September 1944, and again between the 30th October 1944 and the 10th March 1945.

The date stamp was issued by the Marine Corps Post Office 730, and designated as MCPO 325, which was later changed to number 12867. The canceller is interesting in that the whole title of the Division is included - 7TH MARINES 1ST MARINE DIVISION - FLEET MARINE FORCE - and the notation U.S./MARINES between the killer bars.

The Unit's censor mark is applied in blue.

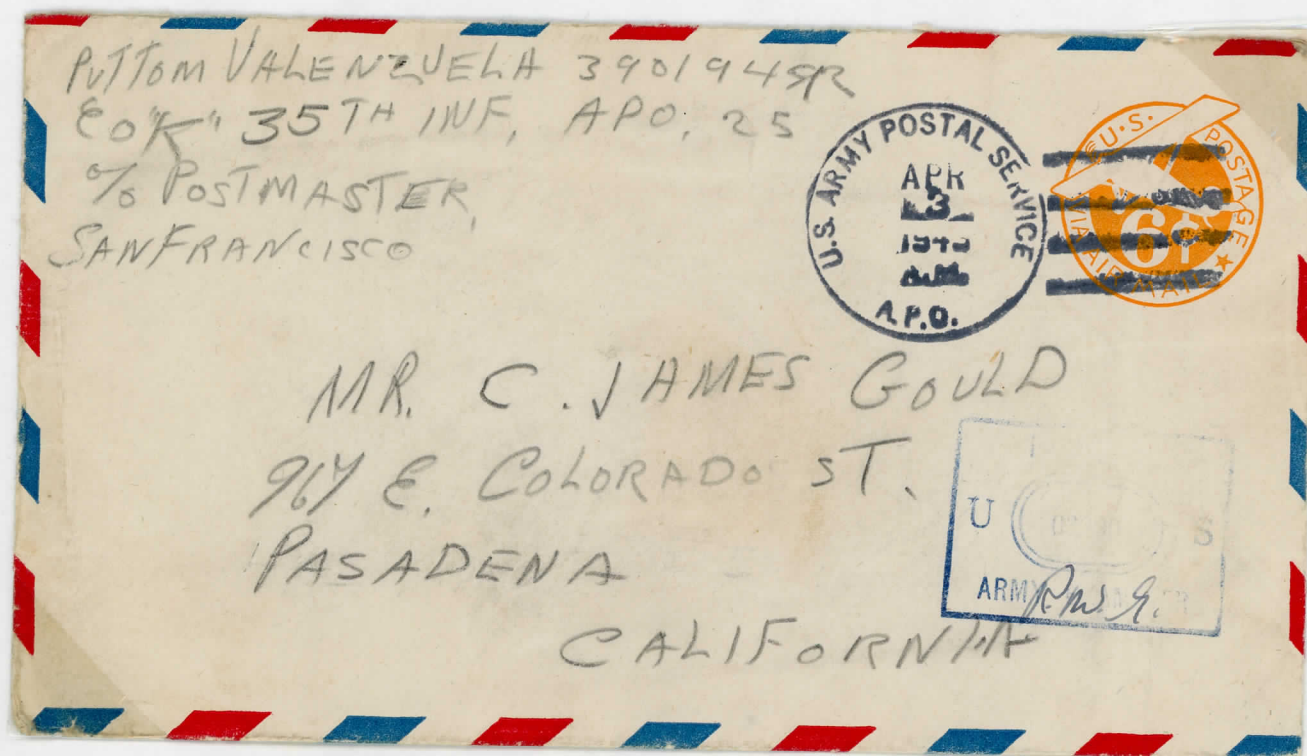
The date stamp with killer bars is Jersey type M-18, applied in black.

3 APRIL 43

A-16

BRITISH SOLOMON ISLANDS PROTECTORATE (WESTERN PACIFIC) —

WORLD WAR II CAMPAIGN, POSTAL HISTORY



APO 25

From Company "K", 35th Infantry Regiment.

C.d.s. Jersey type A-16

The Regiment operated as the 35th Infantry Regiment Combat Team, part of the Northern Landing Force. APO 25 operated on Guadalcanal from 31 Dec. 1942 until the move northward on 21 July 1943.

8 APRIL 43
A 21

BRITISH SOLOMON ISLANDS PROTECTORATE (WESTERN PACIFIC) —
WORLD WAR II CAMPAIGN, POSTAL HISTORY

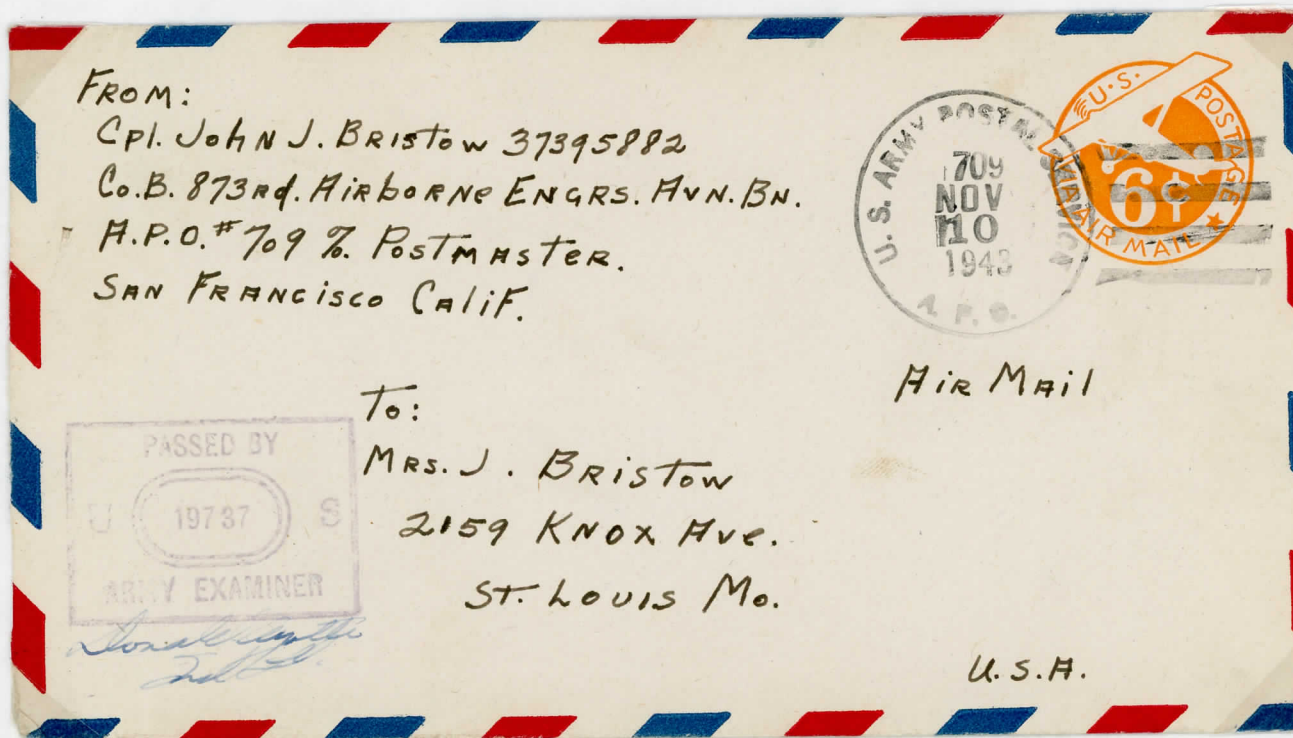


A 1943 Cover from a member of the 31st Bomber Squadron c/o APO 709 stationed on Guadalcanal. The Cover has, however, been posted in the Russell Islands at APO 43. The postmarker is Jersey type A-21 in use between 21 February and 28 June 1943 at APO 43.

The censor stamp is unusual and has not been noted before.

10 NOV 43
47

BRITISH SOLOMON ISLANDS PROTECTORATE (WESTERN PACIFIC) —
WORLD WAR II CAMPAIGN, POSTAL HISTORY

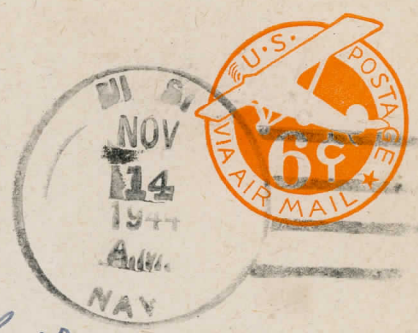


The Cover illustrated above from a member of the 873rd Airborne Engineers Aviation Battalion was posted on Guadalcanal on the 10th November 1943. Postmarked with APO 709, circular cancellation with killer bars (Jersey type A-7). The boxed cachet applied by the censoring officer, mark number 19737, is Gisburn type 61.

14 NOV 44

BRITISH SOLOMON ISLANDS PROTECTORATE (WESTERN PACIFIC) —
WORLD WAR II CAMPAIGN, POSTAL HISTORY

*R.S. Manor, Ph M/c
Hq. Co. 1st Bn., 29th Marines
6th Marine Division
F.P.O. San Francisco, Calif.*



*Marine Corps Chevron,
The Chevron Bldg. 15, Marine Corps Base
San Diego, 40,
California.*

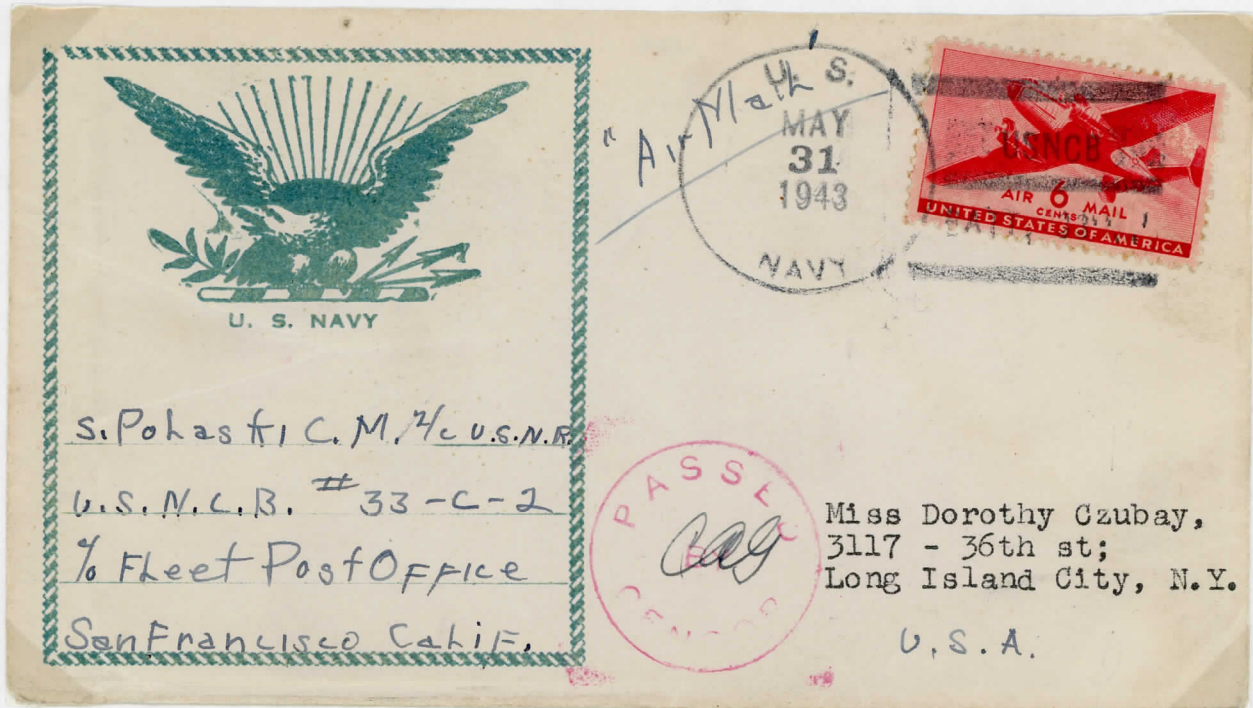


The above 1944 Cover is from a member of the Headquarters Company of the 1st Battalion of the 29th Marines - 6th Marine Division. The Division was formed from the First Provisional Marine Brigade and was trained on and around the Guadalcanal area for its part in the amphibious landings on the Okinawa and Ryuku Island assaults. The Division departed Guadalcanal on the 15th March 1944, so dates for the Division on Guadalcanal are 7th September 1944 until 15th May 1945.

The postmarker with killer bars is, as yet, untyped and the censor mark is Gisburn type 59.

31 MAY 43
CB 3

BRITISH SOLOMON ISLANDS PROTECTORATE (WESTERN PACIFIC) —
WORLD WAR II CAMPAIGN, POSTAL HISTORY

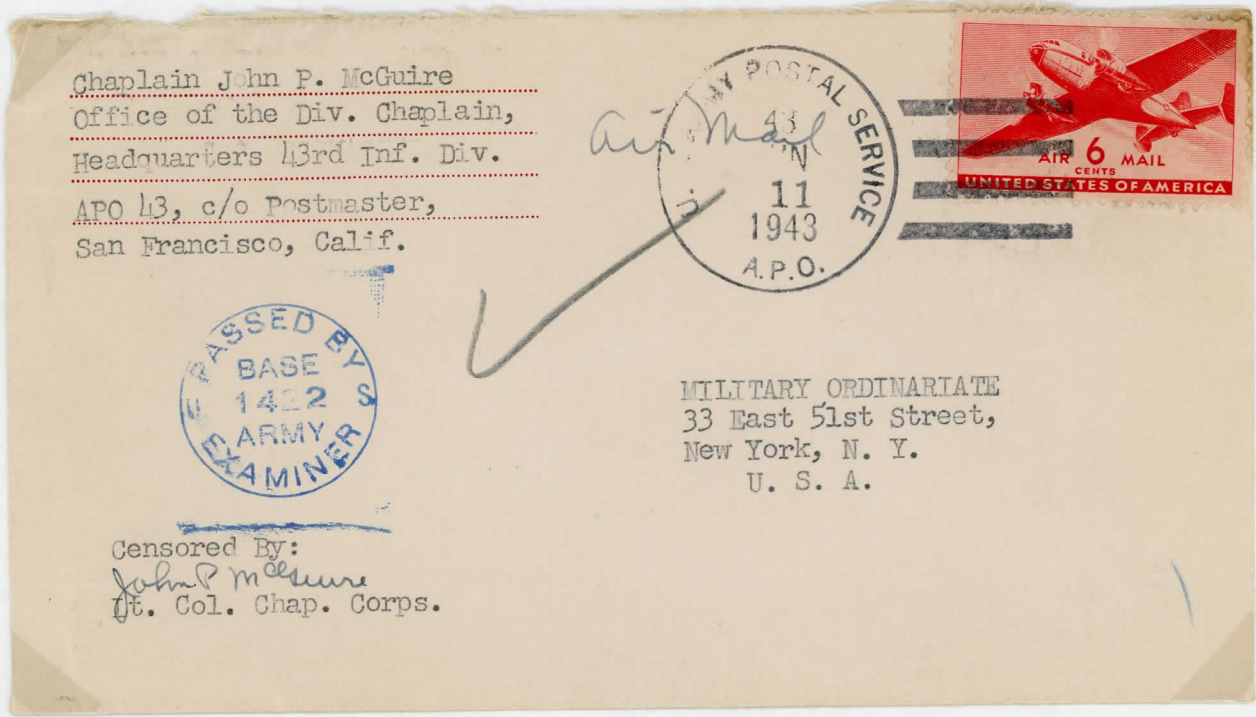


This is a cover from a member of the United States Naval Construction Battalion No. 33. This Unit was stationed at Banika Island in the Russell Group from the 21st February 1943 until February 1944.

Date stamp and killer bars are those of the 33rd C.B., with the slogan USNCB/BATT 33 between the killer bars, Jersey type CB-3 (33rd NCB). Unit censor stamp is applied in red to the front of the cover.

11 JUNE 43
A 20

BRITISH SOLOMON ISLANDS PROTECTORATE (WESTERN PACIFIC) —
WORLD WAR II CAMPAIGN, POSTAL HISTORY



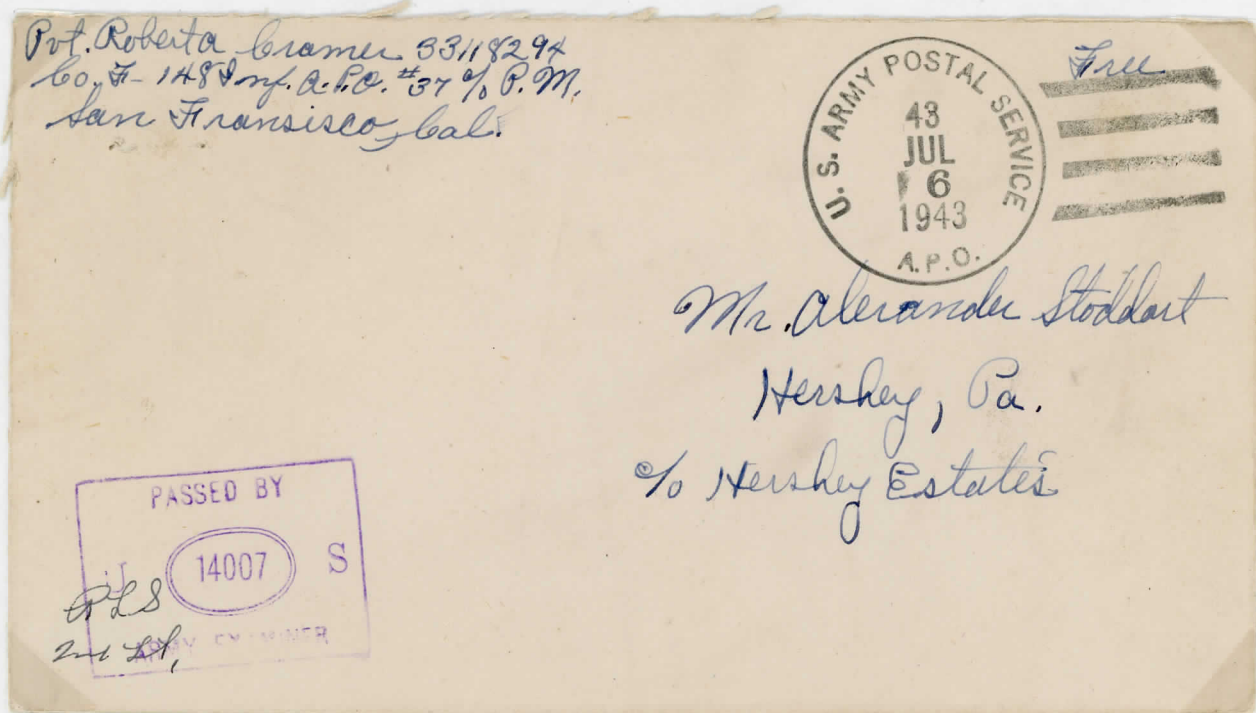
A 1943 Cover from the Chaplain of the 43rd Infantry Division. This Unit was stationed at various locations in the Protectorate as follows:

- | | | |
|---------------------------|--------------|---------------------|
| Guadalcanal | 17 February | to 20 February 1943 |
| Russell Islands | 21 February | to 28 June 1943 |
| Munda, New Georgia Island | 30 June 1943 | to February 1944. |

The Cover illustrated above, dated 11 June 1943, was posted when the Unit was stationed in the Russell Islands. The cancellation is Jersey type A-20 and the Cover is self-censored but, also applied, is Gisburn type 57 censor stamp.

6 JULY 43
A20

BRITISH SOLOMON ISLANDS PROTECTORATE (WESTERN PACIFIC) —
WORLD WAR II CAMPAIGN, POSTAL HISTORY

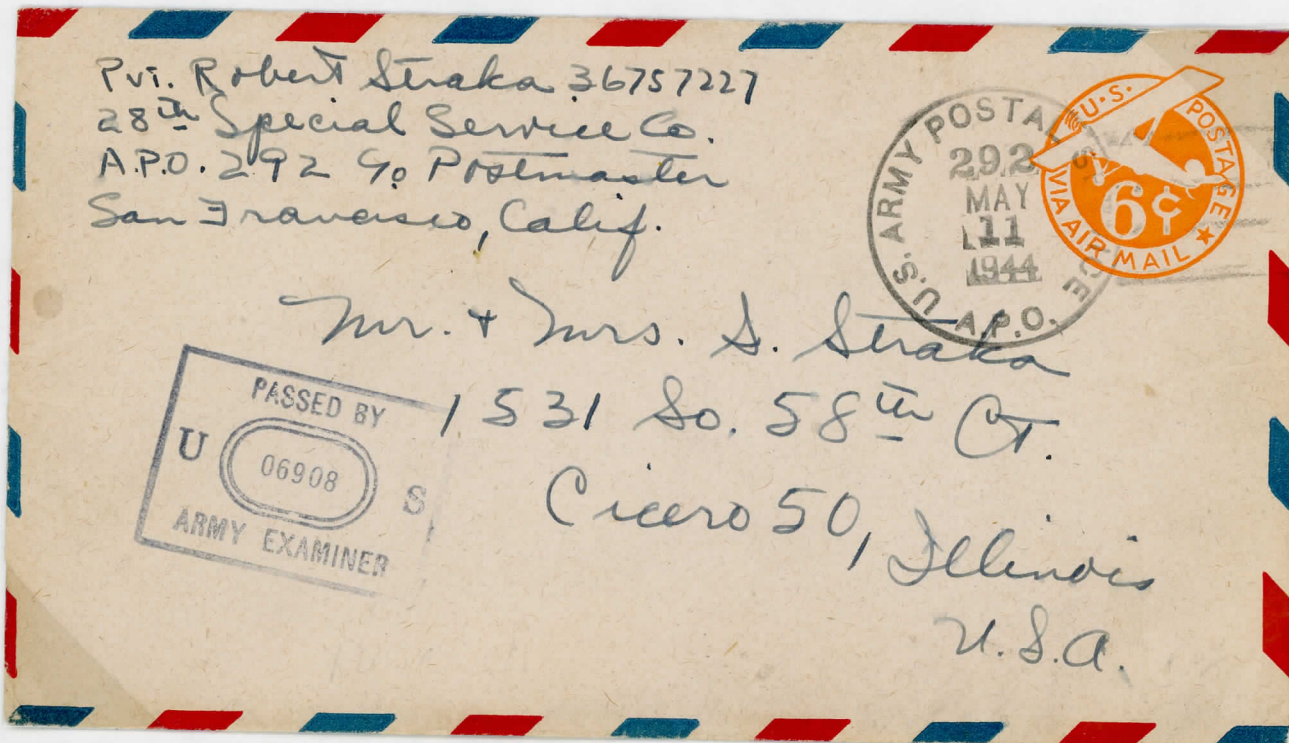


A1943 Cover from a member of the 145th Infantry Division c/o APO 37 but posted at the Post Office of the 43rd Infantry Division, APO 43. These two units were stationed on New Georgia Island at the same time. APO 37 between 22 July 1943 and 8 September 1943 and APO 43 between 20 June 1943 and February 1944.

The Cover is dated 6 JUL 1943, cancelled with APO 43 date canceller (Jersey type A-20) and the censor stamp is Gisburn type 61. The Cover has no stamp applied as no doubt they were not available.

11 MAY 44
A-23.

BRITISH SOLOMON ISLANDS PROTECTORATE (WESTERN PACIFIC) —
WORLD WAR II CAMPAIGN, POSTAL HISTORY



A.P.O. 292

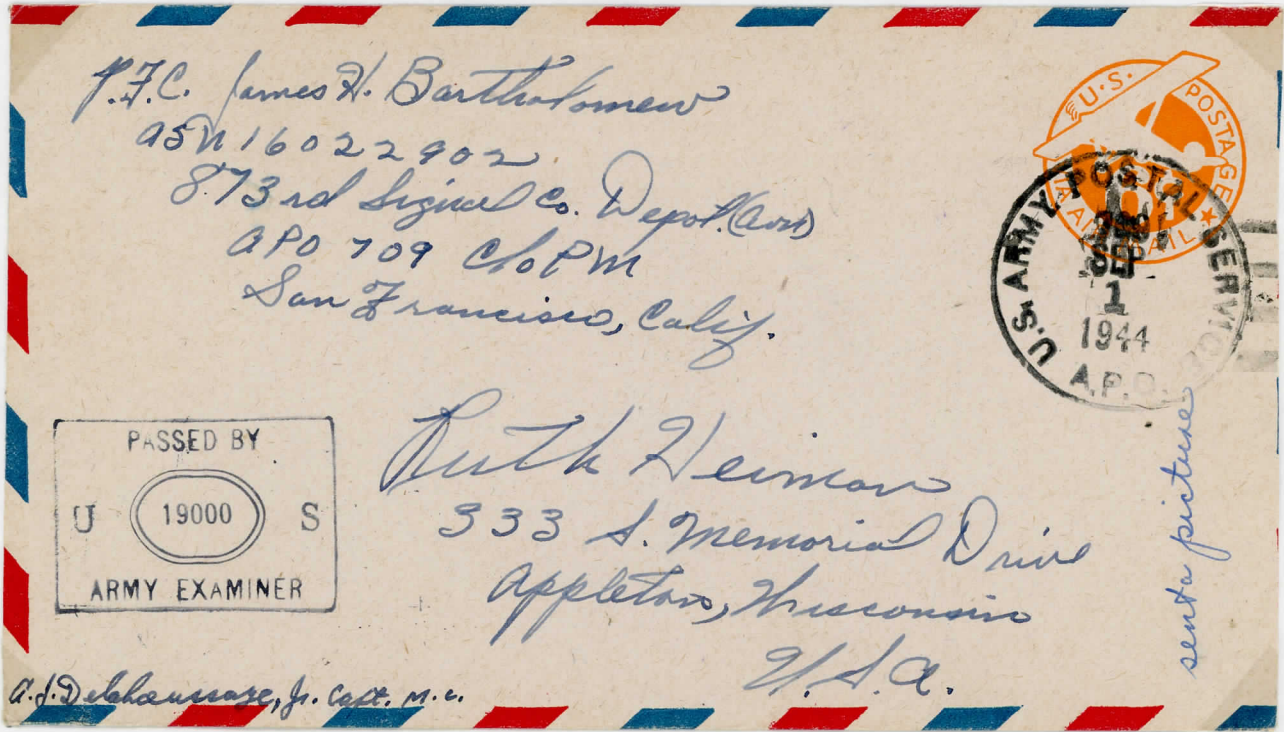
From the 28th Special Service Company.

C.d.s. Jersey type A-23. This cds was used by APO 292 when it was located in the Russell Islands between 15 March 1944 and 8 Feb. 1946

1 SEPT 44
A4

BRITISH SOLOMON ISLANDS PROTECTORATE (WESTERN PACIFIC) —

WORLD WAR II CAMPAIGN, POSTAL HISTORY



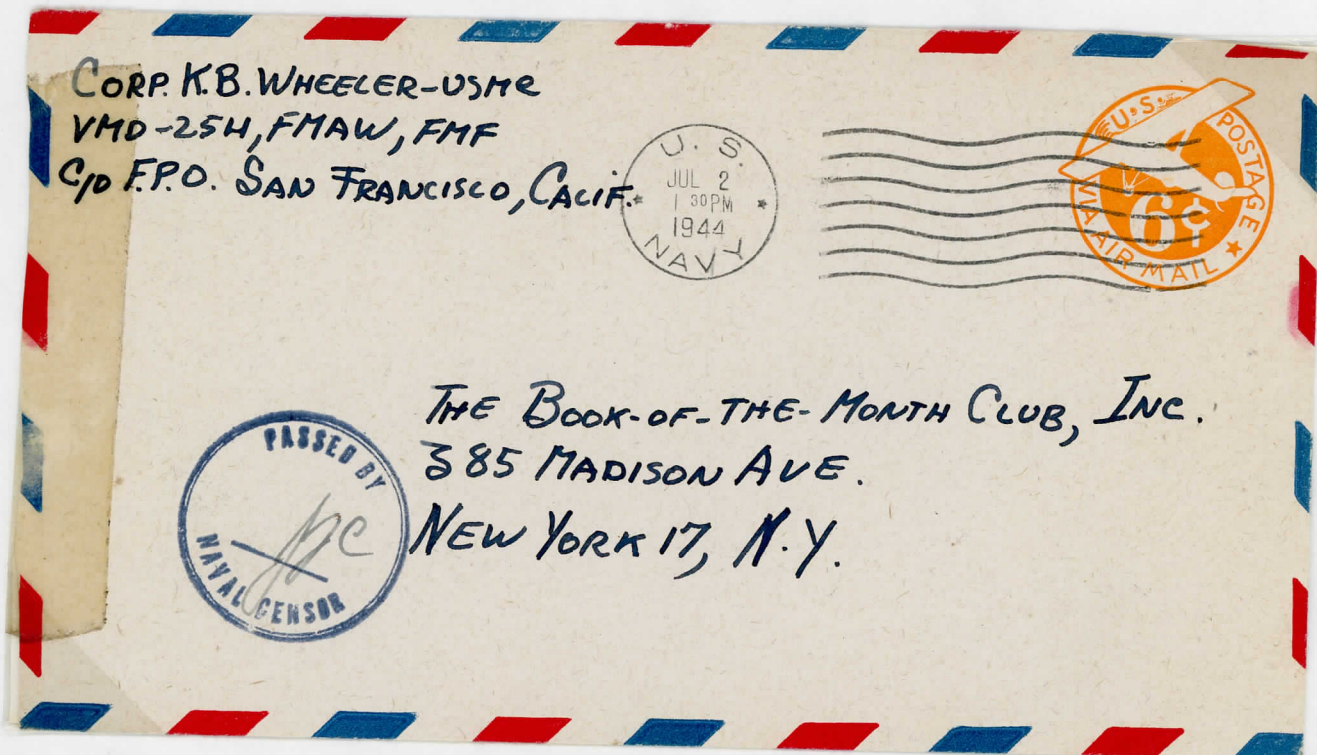
This Cover, from a member of the 873rd Signal Company Depot, has been cancelled with another of the rarer datestamps plus killer bars and was used for a short period in 1944. It is Jersey type A-4 and the censor stamp is Gisburn type 61.

2 July 44

BRITISH SOLOMON ISLANDS PROTECTORATE (WESTERN PACIFIC) —

WORLD WAR II CAMPAIGN, POSTAL HISTORY

UNITED STATES FORCES (MARINES) WORLD WAR II



VMD-254 Marine Photographic Squadron
 FMAW Fleet Marine Air Wing
 FMF Fleet Marine Force
 C.d.s. unlisted Navy type

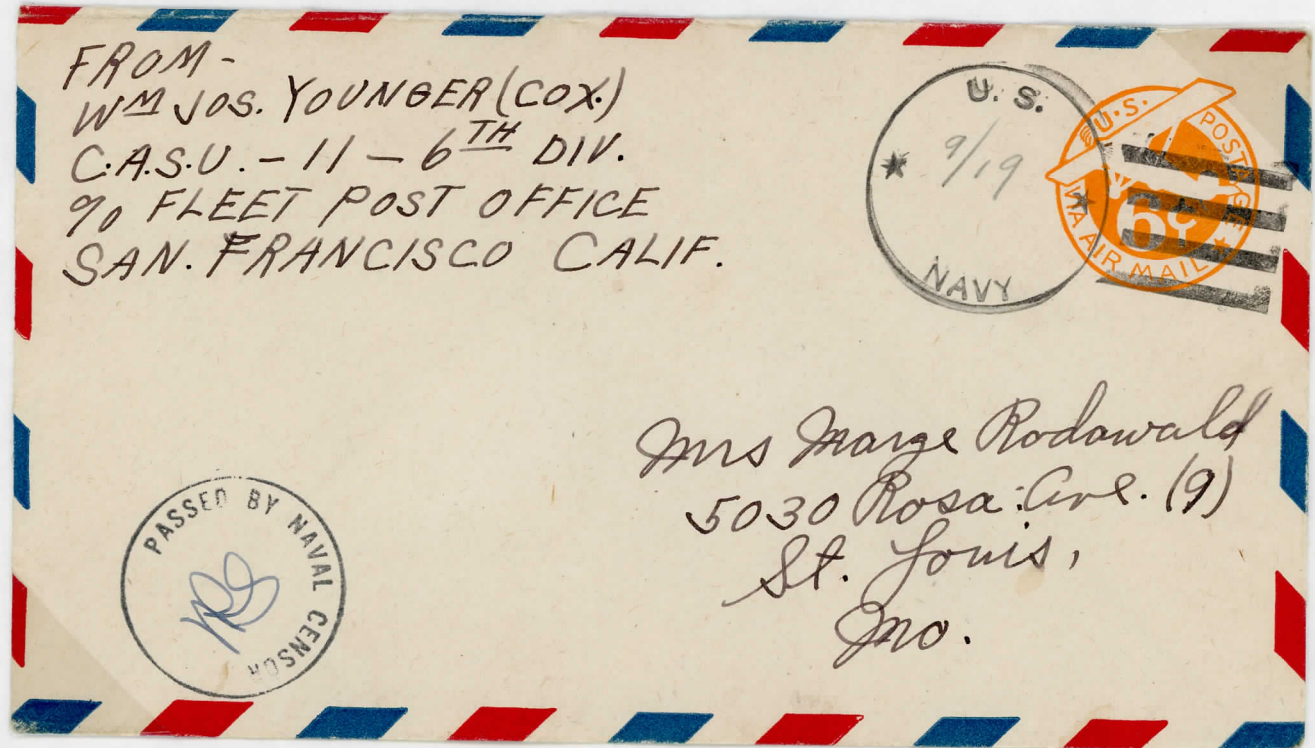
The unit was stationed on Guadalcanal from
 March 1944 until 10 July 1944

19 SEPT 43

BRITISH SOLOMON ISLANDS PROTECTORATE (WESTERN PACIFIC) —

WORLD WAR II CAMPAIGN, POSTAL HISTORY

UNITED STATES FLEETS, NAVY, WORLD WAR II.



Carrier Aircraft Service Unit No. 11
 - 6th Division (Marines)

C.d.s. blind U.S. Navy, type unlisted.

CASU-11 was in operation on Guadalcanal between
 10 July 1943 and August 1944.

AFTER 5 DAYS RETURN TO

P.H. WONDERS. S.F. 1/2
11TH SPEC. N.C.B. CO. D
% FLEET P.O.
SAN. FRANCISCO, CAL.



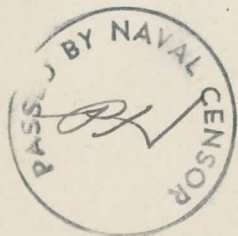
-AIR MAIL-

Mr. & Mrs Peter Wonders
416 Wilson St
Little Chute
Wisconsin U.S.A.



COMPANY "D", 11TH NAVAL CONSTRUCTION BATTALION, "SPECIALS"
THIS UNIT WAS STATIONED AT NOUMEA, NEW CALEDONIA FROM
THE 30 OCTOBER 1943, UNTIL JANUARY 1944.

Alvin W. Satunaw C. I. F.
46th C. B. Co. "B" Adj.
% F. P. O. San Francisco



Mrs. A. W. Satunaw
3431 N. W. 21st
Oklahoma City, 7, Okla.

46TH U.S. NAVAL CONSTRUCTION BATTALION, COMPANY "B", ADJUTANT.

THIS UNIT WAS STATIONED AT FINSCHHAFEN, NEW GUINEA, WITH THE VARIOUS UNITS AND COMPANIES MOVING TO THE ABOVE DURING THE 24 DECEMBER 1943 AND 6 JANUARY 1944, UNTIL FEBRUARY/MARCH 1944.

DURING THE PERIOD 2 MARCH/19 APRIL 1944 UNTIL 1 FEBRUARY 1945 THE UNIT WAS STATIONED AT MANUS, IN THE ADMIRALTY ISLANDS TO THE NORTH OF NEW GUINEA.

WARWICK STAMP ALBUM REFILL

John C. Muller 404 1/2 W.S.N.R.
86 N.C.B. Co. D.
F.P.O. San Francisco Cal.

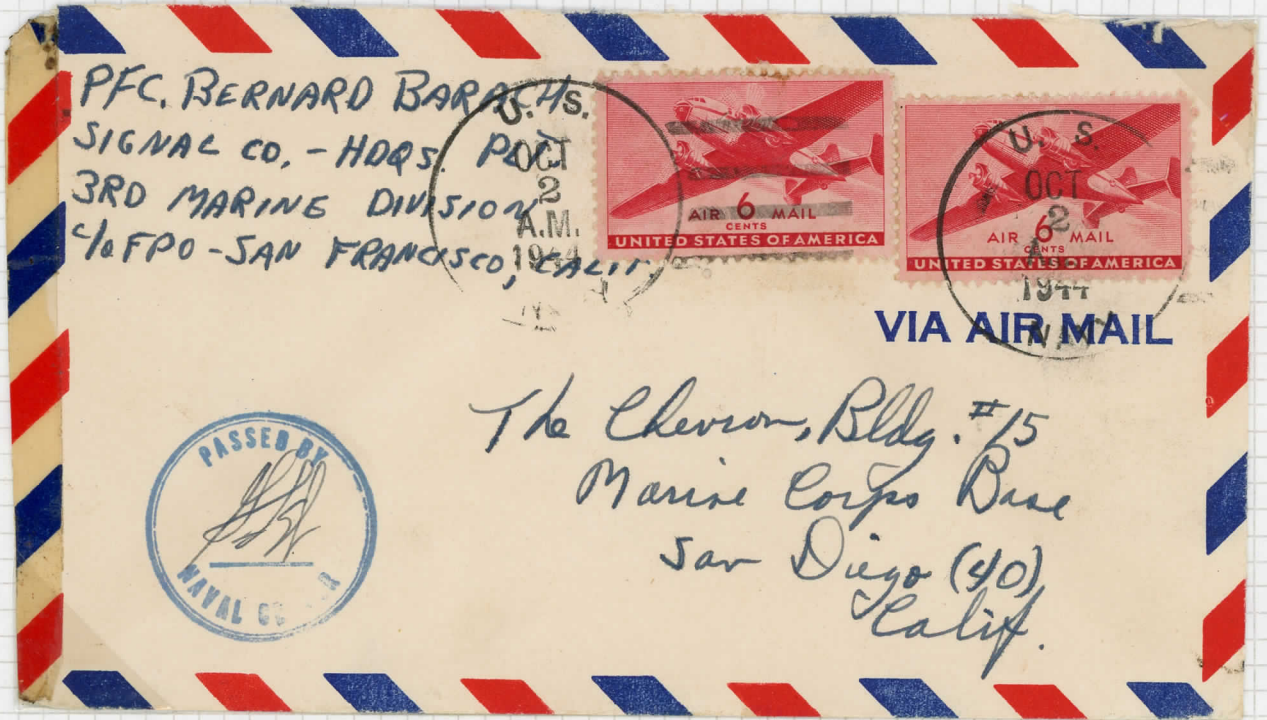
U. S.
JAN
25
1944
P.M.
NAVY

U.S. POSTAGE
6c
AIR MAIL

BY MAIL CENSOR PASSED
JR

Manager H. L. R. Emmet
Building # 14
Crie Works
General Electric Co.
Crie, Penn. U.S.A.

COMPANY "D", 86TH U.S. NAVAL CONSTRUCTION BATTALION.
UNIT STATIONED AT ADAK, ALASKA FROM 3 JUNE 1943
UNTIL 15 NOVEMBER 1944.



SIGNAL COMPANY, HEADQUARTERS PLATOON, 3RD MARINES,
3RD MARINE DIVISION, FLEET MARINE FORCE.

THIS UNIT TOOK PART IN THE INVASION OF GUAM, AND AS
SUCH WAS STATIONED AT GUAM FROM THE 21 JULY 1944
UNTIL 16 FEBRUARY 1945.