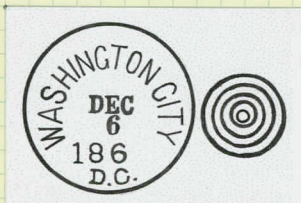


# WASHINGTON D.C.'s EARLIEST DUPLEX POSTAL MARKINGS

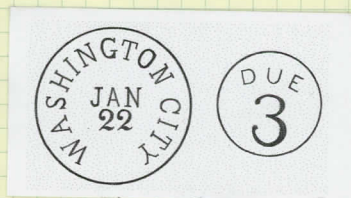
A DISPLAY OF THE FIRST FOUR DUPLEX POSTAL MARKINGS USED IN THE WASHINGTON, D.C. CITY POSTOFFICE, 1862-1863, PREFACED WITH A SHORT REVIEW OF THE FORCES THAT SHAPED THEIR CREATION. THE FOUR DUPLEX MARKINGS ARE PRESENTED IN THE FOLLOWING ORDER:



THE ECCENTRIC



WAFFLE IRON



DUE 3



DOUBLE CIRCLE  
TARGET

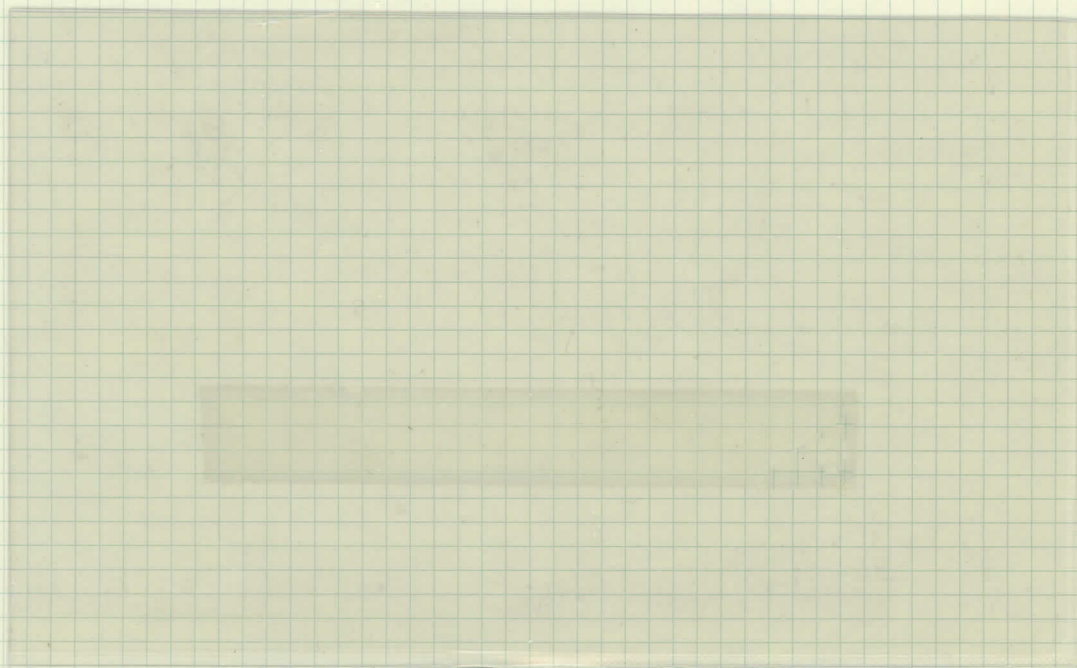
---

A DUPLEX POSTAL MARKING PERFORMS TWO TASKS AT THE SAME TIME. IT MARKS THE DAY AND PLACE WHERE THE LETTER ENTERS THE POSTAL SYSTEM AND IT "KILLS" THE STAMP PREVENTING ITS REUSE OR TO INDICATE SOME OTHER POSTAL FUNCTION.



## PREFACE: ADDITIONAL PROCESSING STEP

WITH THE ISSUANCE OF POSTAGE STAMPS IN 1847 AN ADDITIONAL STEP IN THE PROCESSING OF MAIL OCCURED, "KILLING" THE STAMP. IN ADDITION TO THE DATE-LOCATION MARKING, A SEPARATE MARKING CANCELLING THE STAMP WAS NECESSARY. THIS TOOK ADDITIONAL TIME AND EFFORT.



FOLDED LETTER  
POSTED IN 1849  
WITH THE STAMP  
"KILLED" WITH  
A 7-BAR, 19mm  
DIAMETER GRILL

IT WAS NOT LONG BEFORE ONLY THE DATE-LOCATION HANDSTAMP WAS USED TO DATE LETTERS AND "KILL" THE STAMP.

FOLDED  
LETTER  
DATELINED  
29  
DECEMBER  
1852





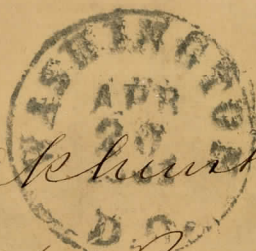
PREFACE: ADDITIONAL PROCESSING STEP CONFIRMED  
IN JULY 1860 THE POST OFFICE DEPARTMENT ISSUED A NOTICE TO  
ALL POSTMASTERS REMINDING THEM THAT DATE STAMPS  
WERE NOT TO BE USED TO "KILL" THE STAMP. THE WASHINGTON  
CITY POST OFFICE FOLLOWED THE NOTICE FOR A WHILE.

Smithsonian Institution,  
WASHINGTON, D. C.

*John Akhurst*

*9 1/2 Profed St.*

*Brooklyn  
N. Y.*



7-BAR  
23mm  
DIAMETER  
GRILL

20  
APRIL  
1861

BUT, WAS SOON BACK USING JUST THE DATE STAMP TO "KILL" THE STAMP.

**WITH DISPATCH**

*Rev. John Bailett  
Caton  
Connecticut*

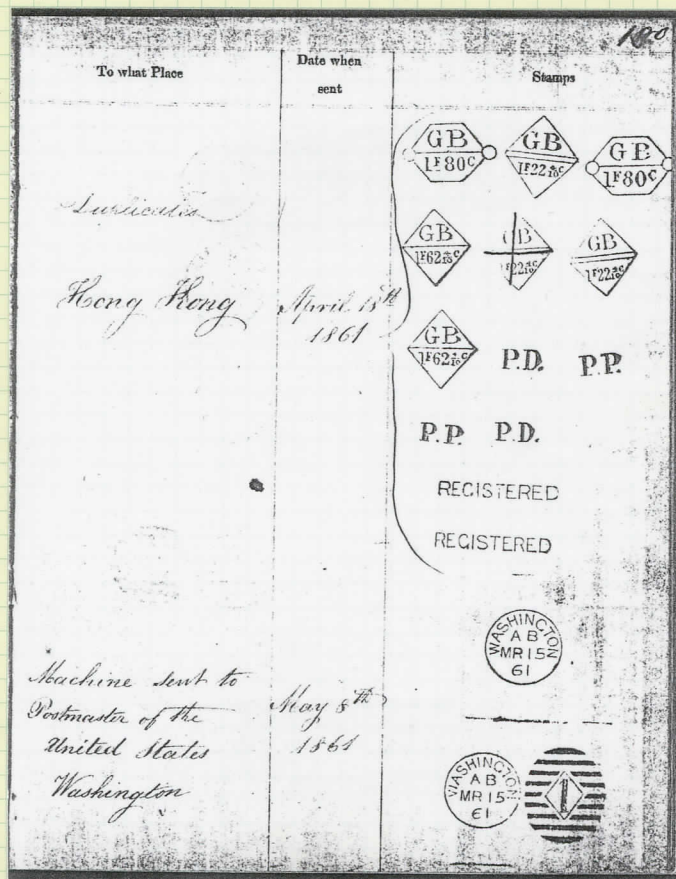


6 SEPTEMBER  
1861



# PREFACE: MECHANIZATION BEGINS

THE POSTAL REFORMS THAT PRODUCED THE FIRST POSTAGE STAMPS ALSO REDUCED POSTAGE RATES RESULTING IN INCREASING MAIL VOLUME. THE INCREASING MAIL VOLUME DEMANDED FASTER AND MORE ACCURATE PROCESSING OF THE MAIL.



REDUCED PHOTOCOPY OF PAGE 180 FROM BRITISH IMPRESSION BOOK 8

IN THE SPRING OF 1861 THE U.S. POST OFFICE DEPARTMENT PURCHASED A STAMPING MACHINE FROM THE BRITISH POST OFFICE. EXACTLY WHAT KIND OF A MACHINE THE BRITISH P. O. SOLD THE U. S. P. O. D. IS UNKNOWN. IMAGES OF THE STAMPING DIES, A CIRCULAR DATE STAMP AND A DUPLEX STAMP, PROVIDED WITH THE MACHINE WERE RECORDED IN THE B. P. O.'S IMPRESSION BOOKS ON 8 MAY 1861. NEITHER OF THESE MARKINGS HAVE EVER BEEN SEEN ON U.S. MAIL.

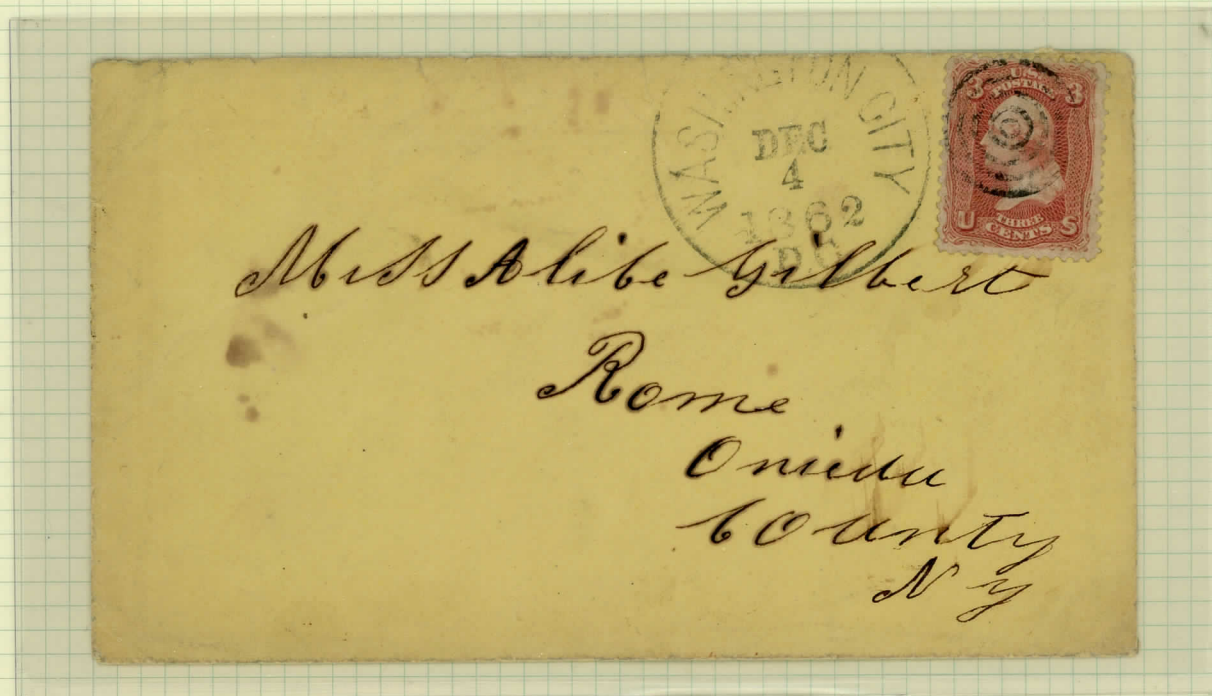
IN A REPORT COVERING 1862, POSTMASTER-GENERAL MONTGOMERY BLAIR WROTE THAT TWO MACHINES HAD BEEN TESTED AND FOUND UNSATISFACTORY. IT IS BELIEVED THAT THE "ECCENTRIC" AND THE "WAFFLE IRON" DUPLEX MARKINGS ARE FROM THESE EARLY MACHINE TESTS.



# FIRST DUPLEX: "ECCENTRIC"



PERIOD OF USE  
4-11 DECEMBER 1862



## CERTIFICATE

FIRST DAY OF USE OF A DUPLEX POSTAL MARKING DEVICE  
IN THE WASHINGTON, D.C. CITY POST OFFICE, 4 DECEMBER  
1862

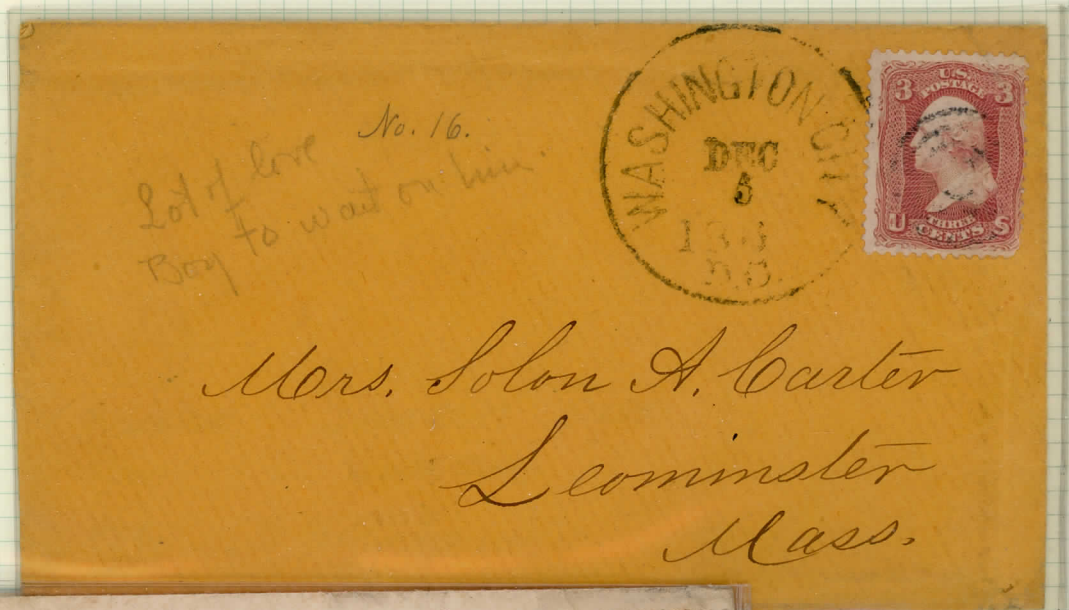
ONLY KNOWN EXAMPLE OF THE FULL YEAR DATE IN THE  
POSTMARK. THE VERTICAL ALIGNMENT OF THE "2" IN  
"1862" IS NOT VERTICAL, AN INDICATION THAT IT WAS NOT  
STAYING PUT. BY THE END OF THE FIRST DAY THE "2" WAS  
NO LONGER IN PLACE AND WAS NOT USED THEREAFTER. A  
SURE INDICATOR OF UNSATISFACTORY PERFORMANCE.

BELIEVED, BUT NOT CONFIRMED, APPLIED BY ONE OF THE  
TESTED MACHINES MENTIONED IN MONTGOMERY BLAIR'S  
1862 REPORT MAKING IT THE EARLIEST MACHINE CANCEL  
IN AMERICA.



# FIRST DUPLEX: "ECCENTRIC"

SECOND DAY  
OF USE  
FRIDAY  
5 DECEMBER  
1862



THIRD DAY  
SATURDAY  
6 DECEMBER  
1862

FOURTH DAY  
SUNDAY  
7 DECEMBER  
1862



A SUNDAY USAGE CONFIRMS A SEVEN DAY A  
WEEK OPERATION WHICH INDICATES A VERY  
HEAVY VOLUME OF MAIL.



# FIRST DUPLEX: "ECCENTRIC"

DISCOVERY  
COVER WITH  
LETTER THAT  
FIRST IDENTIFIED  
THE POSTMARK  
AS BEING USED  
IN 1862.

8 DECEMBER 1862  
MONDAY  
FIFTH DAY OF USE

CAMP RELIEF  
WAS LOCATED ON  
7TH. ST. N.W. NEAR  
MT. VERNON SQ.

Surgeons Quarters Scotts 900  
Camp Relief.

Washington D.C.  
Dec 8<sup>th</sup> 1862

My dear father.

As a moment before  
mail closes is a long I will  
hastily drop a line.

We are having very cold weather  
now on Friday it snowed &  
rained all day & on Sat  
morning 2 inches of snow  
lay upon the ground. Yesterday  
it was very cold & high North  
West Winds - 18° above zero at

till very cold  
trapped my  
Anast yesterday  
to hardly  
not comfortable.  
at this camp



Leonard Fisher Esq

Son.

New York

Care  
Marshall  
Infirmary



# FIRST DUPLEX: "ECCENTRIC"



EIGHTH AND LAST DAY OF USE: THURSDAY, 11 DECEMBER 1862  
IMPROPERLY APPLIED, DATE STAMP USE TO KILL THE  
POSTAGE STAMP, NOT THE TARGET KILLER.

THE SHORT PERIOD OF USE, THE LACK OF CLARITY OF THE  
MARKINGS, AND THE SHORTAGE OF PROCESSED  
LETTERS ARE SURE SIGNS OF THE UNSATISFACTORY  
PERFORMANCE BY THE TESTED MACHINES REPORTED BY  
MONTGOMERY BLAIR IN AN 1862 REPORT.



# SECOND DUPLEX: "WAFFLE IRON"



PERIOD OF USE  
4-11 DECEMBER  
1862

SECOND DAY  
5 DECEMBER

Maryland Montgomery Co Comp Zouave Dec 4 1862

My dear Friend how do you do

I received your kind letter last night and as I am off from duty to day I thought I would write you a few lines. I am getting along quite well, I have had a bad cold but I am getting better now. we are having very fine weather out here. we have had one or two rain storms and one snow storm, it is so warm to day that we can hardly

we can get around. but when cannot with might of might I know comfortable know of any news and do. I do not know how long he shall stay here

Mrs. J. J. True  
East Poland  
Maine



LETTER DATELINED, 4 DECEMBER 1862, BUT POSTMARKED ON 5 DECEMBER. BELIEVED, BUT NOT CONFIRMED AS BEING APPLIED BY AN EARLY STAMPING MACHINE.



## SECOND DUPLEX: "WAFFLE IRON"

Camp Vermont, Dec 5. 1862.

Dear Friend Augusta;

You don't seem to answer my letters very well - perhaps I don't make them worth answering. I'm going to keep writing, however, until I hear from you some way.

If you can't do better, just copy off a verse or two of scripture - or anything else.

- I have the honor to report that your man is doing splendidly. The Surgeon duped the

and said  
he thought

such a  
him so little

our hits are

need be, and

having an

one are

you sent came last night - the cheese tonight, just in season for supper.

CAMP VERMONT  
WAS LOCATED  
NEAR THE PRESENT  
DAY INTERSECTION  
OF MACARTHUR BLVD.  
AND LOUGHBORO RD.  
IN NORTHWEST D.C.

From  
Camp Vermont

This is for Augusta,

Wife of M. W. C. - the W. soldier who was shot on Picket near the Potomac.  
Daughter of Capt. King - In keeping of the Doctor.

Snow's Store, Vermont.



LETTER WRITTEN ON FRIDAY, 5 DECEMBER 1862, BUT NOT POSTMARKED UNTIL SUNDAY, 7 DECEMBER. THIS ALONG WITH AN "ECCENTRIC" DUPLEX ALSO POSTMARKED ON SUNDAY THE 7TH CONFIRMS A SEVEN DAY OPERATION AND A VERY HEAVY VOLUME OF MAIL.



# SECOND DUPLEX: "WAFFLE IRON"



THIRD DAY  
OF USE  
SATURDAY  
6 DECEMBER  
1862

FIFTH DAY  
OF USE  
MONDAY  
8 DECEMBER  
1862



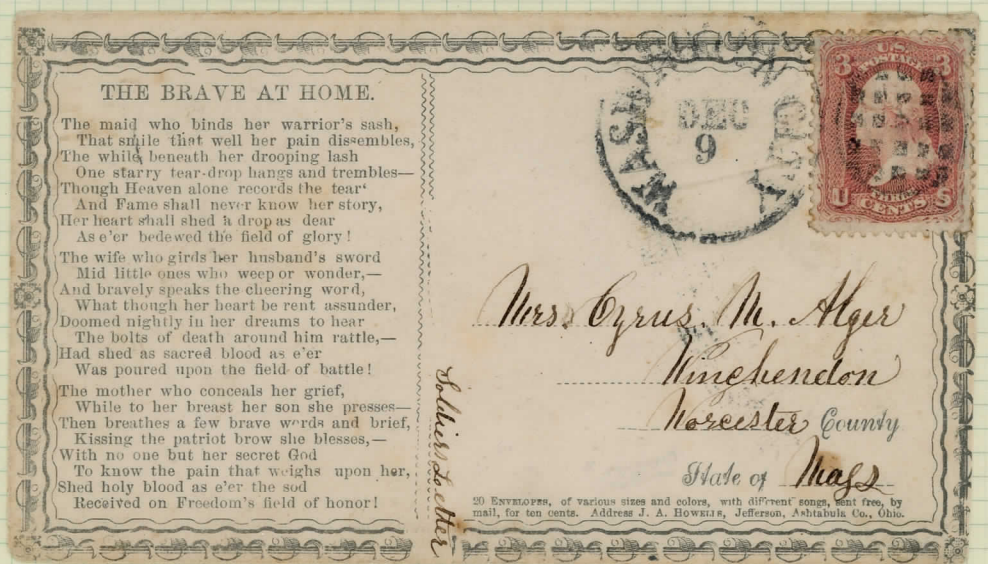
THE DOUBLE STRIKE CLEARLY INDICATES THE "WAFFLE IRON"  
IS A DUPLEX POSTAL MARKING.

ACTING REAR ADMIRAL SAMUEL PHILIP LEE COMMANDED  
THE NORTH ATLANTIC BLOCKADING SQUADRON, SEPTEMBER  
1862 TO OCTOBER 1864. HE WAS A COUSIN OF ROBERT E. LEE  
AND BROTHER-IN-LAW TO LINCOLN'S POSTMASTER-GENERAL  
MONTGOMERY BLAIR.



SECOND DUPLEX: "WAFFLE IRON"

TUESDAY  
9 DECEMBER 1862  
SIXTH DAY OF USE



WEDNESDAY  
10 DECEMBER  
1862  
SEVENTH DAY  
OF USE

WAFFLE IRON KILLER  
REMOVED  
15 DECEMBER 1862  
THRU 20 FEBRUARY  
1863





THIRD DUPLEX: "DUE 3"



PERIOD OF USE  
19 - 22 JANUARY 1863



AN UNCERTIFIED SOLDIER'S LETTER MARKED "DUE 3" IN MANUSCRIPT AND WITH THE "DUE 3" DUPLEX AT THE WASHINGTON CITY (D. C.) POST OFFICE ON 22 JANUARY (1863).

DURING THE EARLY DAYS OF THE CIVIL WAR, COMPULSORY PREPAYMENT OF POSTAGE WITH STAMPS ON LETTERS FROM SOLDIERS WAS WAIVED WHEN THE LETTER WAS CERTIFIED AS A SOLDIER'S LETTER BY AN OFFICER. DOCTORS, SURGEONS, AND OTHER MEDICAL PERSONNEL WERE NOT CONSIDERED OFFICERS AND COULD NOT CERTIFY HOSPITALIZED SOLDIER'S MAIL. UNCERTIFIED LETTERS HAD TO GO TO THE D. L. O. WHERE THEY COULD BE OPENED AND A DETERMINATION MADE. SOLDIER'S LETTERS WERE TURNED OVER TO THE WASHINGTON CITY POST OFFICE WHERE MARKED "DUE 3". THE POST OFFICE DEPARTMENT, THE DEAD LETTER OFFICE, AND THE WASHINGTON CITY POST OFFICE WERE ALL LOCATED IN THE SAME BUILDING WITH THE D. L. O. ON THE FLOOR DIRECTLY OVER THE CITY POST OFFICE.



THIRD DUPLEX: "DUE 3"

In Jack's Hospital  
Jan. 8<sup>th</sup> 1863

SOLDIER'S  
LETTER

Mr. Amos Rice  
Lewis Town  
Tulton Co.  
Md.

3 letters I  
should have  
long ago  
had it by  
roke out of  
of them in  
But I kept  
all the the

time until we got into Jack  
-son (Weds. Dec. 31, 1862) - only  
our Dr. gave me some meds  
that I could not have a just  
-sage ——— As soon as we  
got to Jackson General Hos-  
-pital ——— Here I was a  
a big dose of oil & it keeps Phy-  
sicking and you might know  
it makes one pretty weak —

NOTE →  
YEAR DATE

AN UNCERTIFIED LETTER LATER DETERMINED BY THE DEAD LETTER OFFICE TO BE A SOLDIER'S LETTER AND SO MARKED. POSTED AT THE WASHINGTON CITY POST OFFICE ON 22 JANUARY 1863 WITH "DUE 3" REPLACING THE KILLER IN THE WAFFLE IRON DUPLEX.

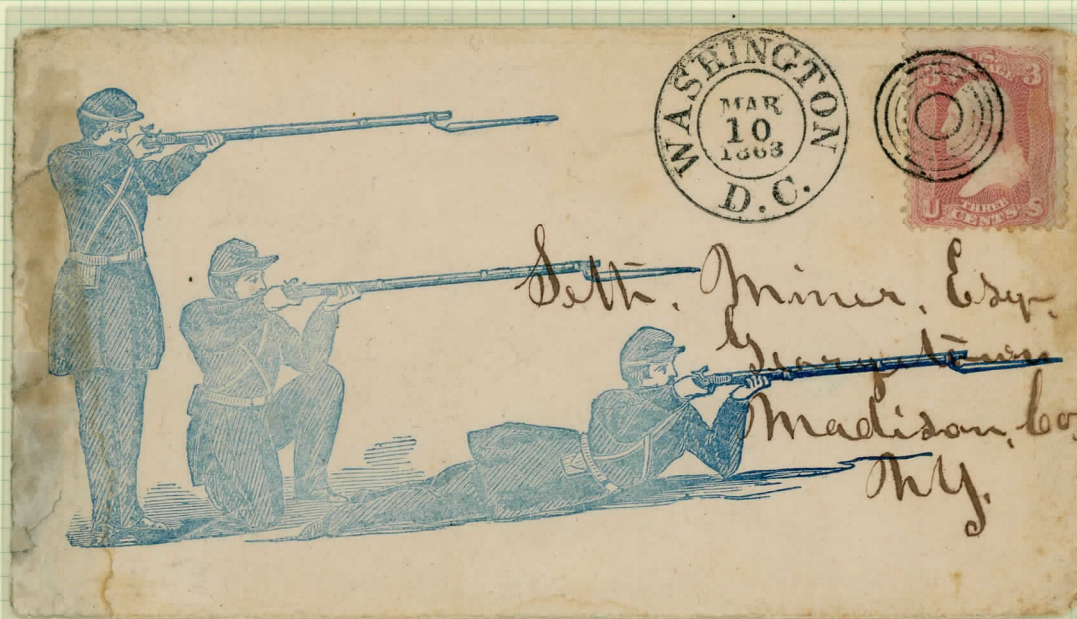


# FOURTH DUPLEX: DOUBLE CIRCLE TARGET



PERIOD OF USE  
7-11 MARCH 1863

10  
MARCH  
1863



*Seth. Miner, Esq.  
New York  
Madison Co.  
N.Y.*

EX RICHARD GRAHAM

108- March 10 - m. 13

*Actg. Rear  
Admiral. S. Phillips Lee  
Comdg. U.S.N.A. Port M. Squadron  
Fortress Monroe  
Virginia*

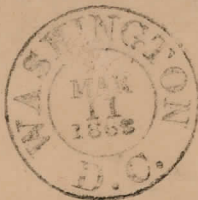


11 MARCH 1863  
LAST DAY OF  
USE

ADDRESSED TO SAMUEL PHLLIP LEE - THE "LEE" IN "BLAIR - LEE HOUSE", THE PRESIDENT'S GUEST HOUSE ACROSS THE AVENUE FROM THE WHITE HOUSE IN WASHINGTON, D.C.



# FOURTH DUPLEX: DOUBLE CIRCLE TARGET



C. Sumner

W W Crannell Esq

Box 807  
Albany  
N.Y.

I have no copies  
of the docs you ask  
C.S.

EX GEORGE TURNER

FREE FRANK OF SENATOR CHARLES SUMNER, 11 MARCH 1863

"A DOUBLE CIRCLE WITH SERIFFED LETTERING COMBINED WITH A 5-RING TARGET DUPLEX MARKING SHOWING CLARITY AND SHARPNESS. ITS BRIEF USE OF JUST 5 DAYS, 7 MARCH 1863 THROUGH 11 MARCH 1863, IMPLIES THE POSSIBILITY OF BEING BY AN EARLY MECHANICAL DEVICE." — ROBERT PAYNE

## CONCLUSION

WHILE WITHOUT POSITIVE DOCUMENTATION, THESE FOUR EARLY DUPLEX MARKINGS ARE VERY LIKELY THE EARLIEST MECHANICALLY APPLIED POSTAL MARKINGS IN THE U.S.A. THE COMBINING OF THE DATE STAMP AND THE KILLER STAMP INTO A SINGLE MARKING DEVICE WAS THE FIRST STEP IN THE MECHANIZATION OF MAIL PROCESSING IN THE U.S.A. MANY MORE DUPLEX MARKINGS FOLLOW AS THE POST OFFICE CONTINUED TO DEVELOPE HAND STRUCK AND MACHINE DEVICES TO PROCESS THE MAIL QUICKLY AND EFFICIENTLY. THESE EFFORTS HAVE RESULTED IN TODAY'S HIGH VOLUME MACHINES.