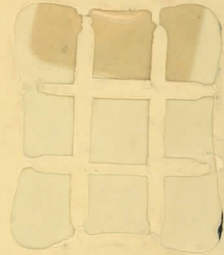
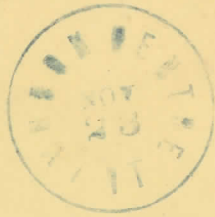




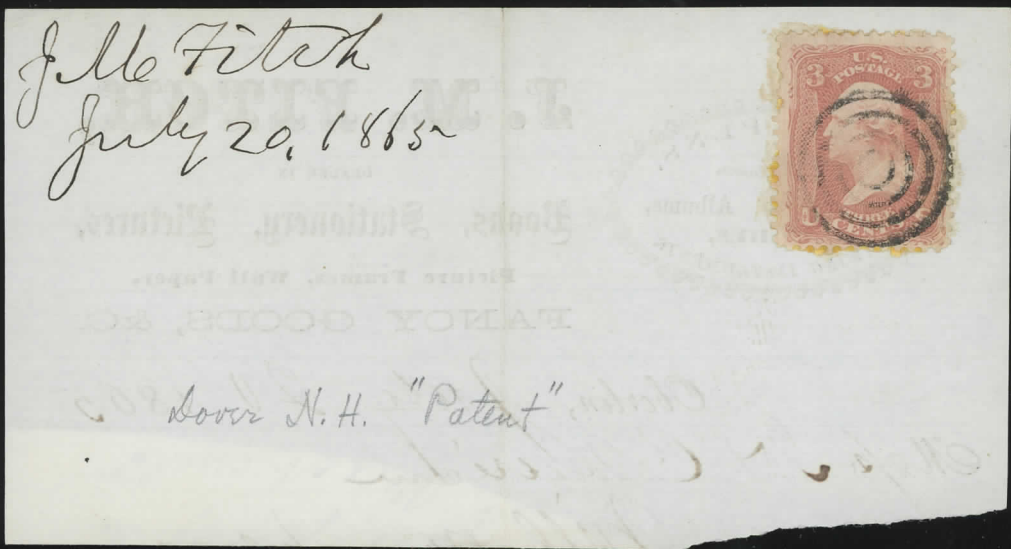
Miss Marion Hines
Marion Hines, South Hardwick
South Hardwick, Penn.



Mrs. Katie G. Hasmer
Bedford
Mass.

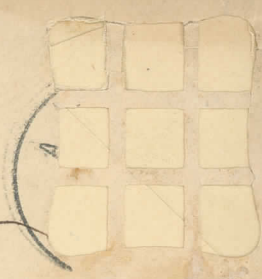


E. Sanford
Bedford
J.C.




I see from your boy
attracted to farm
for sale. If you
would like to
will you

A. Johnson Esq
Enfield
Conn



A. Johnson Esq
Enfield
Conn.



[Faint, mostly illegible handwritten text, possibly bleed-through from the reverse side of the envelope.]





My dear Brother

My remaining duties
glad to hear from thee
perhaps Maalen is to
the speaks about
such long letters to
it seems tedious to
very often if we can
see their letters the
go very much into a
part 5-11

you. so I will chose hoping you
will write to me soon again and
tell me how you get along and
about you adventures. with
a few lines I close



Remaining yours most
affectionately

8287

OFFICE
DEAD LETTERS

PAID
APR 20 1868
PHILADELPHIA



PHILADELPHIA
APR 16 9PM

OFFICE

Bilwisch's town

To J. R. Gilman